

# Rehabilitation of Brink Road Bridge No. M-0064 Over Great Seneca Creek

## PUBLIC INFORMATION MEETING

April 30, 2025

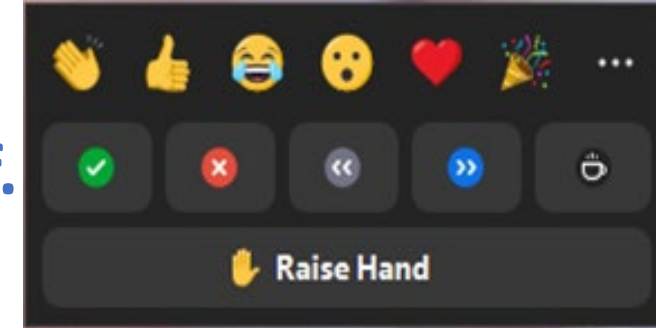


This meeting will be recorded.

# Brink Road Bridge No. M-0064 over Great Seneca Creek Replacement Project

## Zoom Meeting Controls

- ❖ All micphones have been muted and cameras turned off.
- ❖ To reduce the bandwidth of tonight's meeting, please do not turn on your video camera.
- ❖ Following tonight's presentation, you will have the opportunity to provide comments. There will also be a Question-and-Answer session if time allows. Please wait until the presentation ends to raise your hand. Alternatively, you may type your question into the chat box any time during tonight's meeting.
- ❖ To raise your hand, please click on the "Reactions" icon at the bottom of your screen, and then click "Raise Hand."
- ❖ If you called into tonight's meeting via telephone, press \*9 to raise your hand and \*6 to unmute yourself.



# Brink Road Bridge No. M-0064 over Great Seneca Creek Replacement Project

## Purpose of Public Meeting

- ❖ Project team
- ❖ Existing bridge and conditions
- ❖ Project scope and proposed bridge
- ❖ Maintenance of traffic during construction
- ❖ Current project cost estimates, funding and schedule
- ❖ Questions, answer and feedback





# Brink Road Bridge No. M-0064 over Great Seneca Creek Replacement Project

## ◆ Montgomery County Department of Transportation (MCDOT)

- ❖ Shyan-Yung Pan, P.E. Capital Project Manager
- ❖ Brian Copley, P.E. Bridge Unit Manager
- ❖ Michelle Haley Contract Unit Chief
- ❖ Demetries Oberc Real Estate Specialist
- ❖ Doug Baker Utility Coordinator
- ❖ Stella Igbinedion Work Zone Program Manager

## ◆ M-NCPPC Montgomery Planning and Montgomery Parks

- ❖ Sophia Aldrich Transportation Master Planner
- ❖ Douglas Stephens Principal Natural Resources Specialist

## ◆ Design Consultant: Gannett Fleming, Inc.

- ❖ Kyle A. Garruthers, P.E. Structural Engineer
- ❖ Van T. DeJarnette, P.E. Project Manager



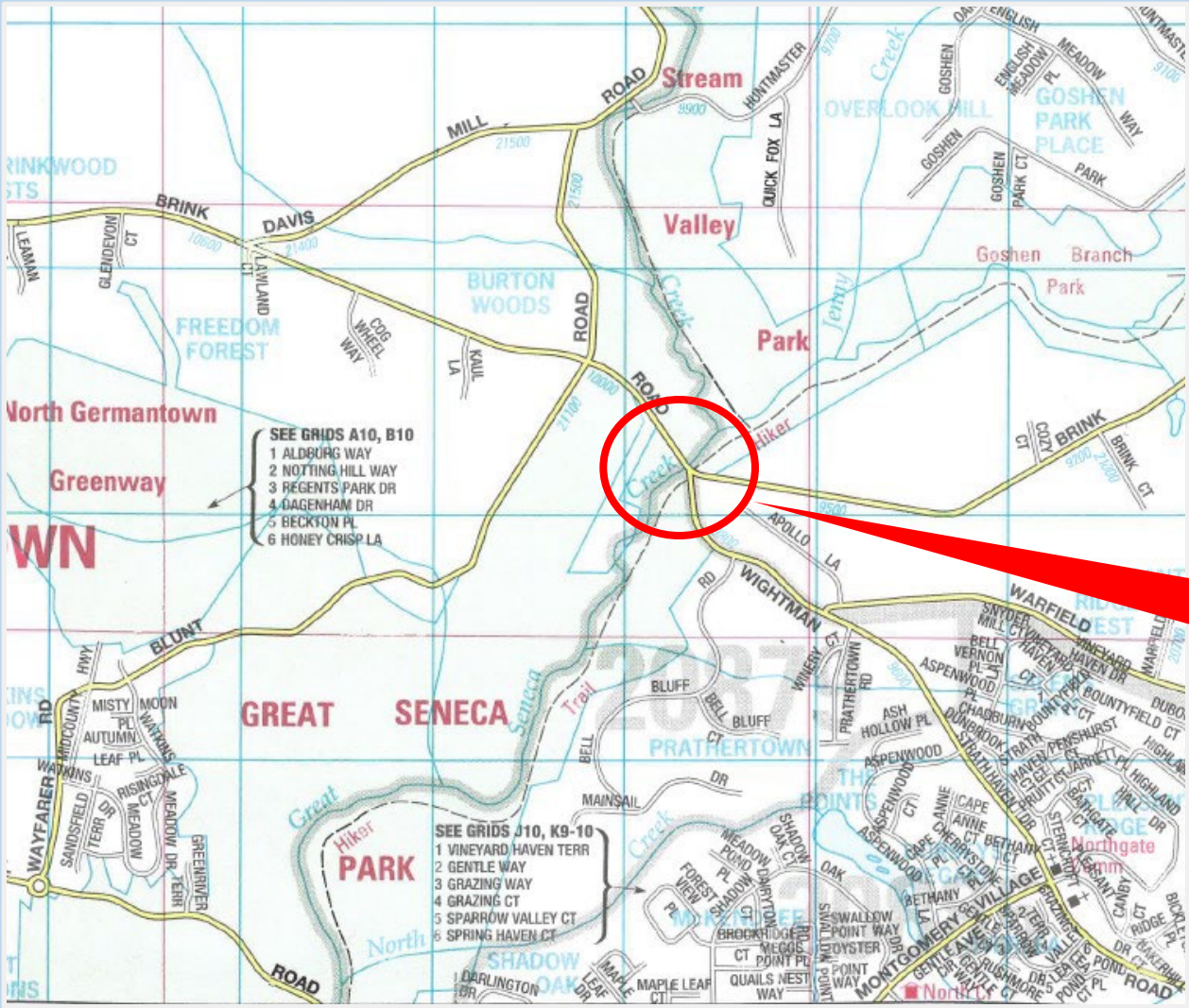
# Brink Road Bridge No. M-0064 over Great Seneca Creek Replacement Project



***PLEASE HOLD  
YOUR QUESTIONS  
UNTIL  
THE END***



# Brink Road Bridge No. M-0064 over Great Seneca Creek Replacement Project



Project Location



Project  
Location

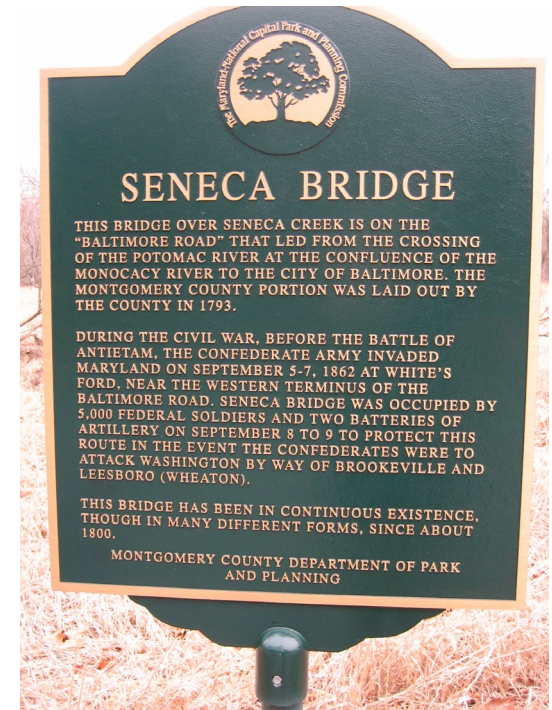




# Brink Road Bridge No. M-0064 over Great Seneca Creek Replacement Project

## Local Master Plans, Speed Limit & Traffic Data

- ❖ Agricultural & Rural Open Space
- ❖ 2023 Master Plan of Highways and Transitways:
  - ❖ County Connector
- ❖ 2018 Montgomery County Bicycle Master Plan:
  - ❖ Sidepath
- ❖ Posted Speed Limit:
  - ❖ 35 MPH
- ❖ Spring 2022 Traffic Counts:
  - ❖ Approximately 12,000 vehicles/day



# Brink Road Bridge No. M-0064 over Great Seneca Creek Replacement Project



❖ Bridge looking northeast



# Brink Road Bridge No. M-0064 over Great Seneca Creek Replacement Project

## Existing Bridge

- ❖ Built in 1936, reconstructed 1972
- ❖ 58'-3" long single span steel beam asphalt filled corrugated metal deck plank structure
- ❖ 23'-6" clear roadway for two-way traffic
- ❖ W-beam railing on both sides
- ❖ Supported by concrete abutments
- ❖ Approach Roadway Flooding



East Elevation (upstream)



North Abutment and Underside Superstructure



South Abutment and Underside Superstructure



Topside Superstructure (Looking Northeast)



# Brink Road Bridge No. M-0064 over Great Seneca Creek Replacement Project

## Deterioration of Existing Bridge

### Asphalt Steel Plank Deck

- ❖ Asphalt patches
- ❖ Severe Corrosion of SIP Forms
- ❖ Railing Post Connection Corrosion



Asphalt Patches



Railing Post Connection Corrosion



Severe Corrosion to SIP Form



# Brink Road Bridge No. M-0064 over Great Seneca Creek Replacement Project

## Deterioration of Existing Bridge

### Steel Beams and Bearings

- ❖ Peeling paint, rust staining and heavy corrosion with Section Losses at beams
- ❖ Rust and heavy corrosion at bearings



Peeling Paint, Rust Staining and Heavy Corrosion at Beams



Heavy Corrosion and Section Losses

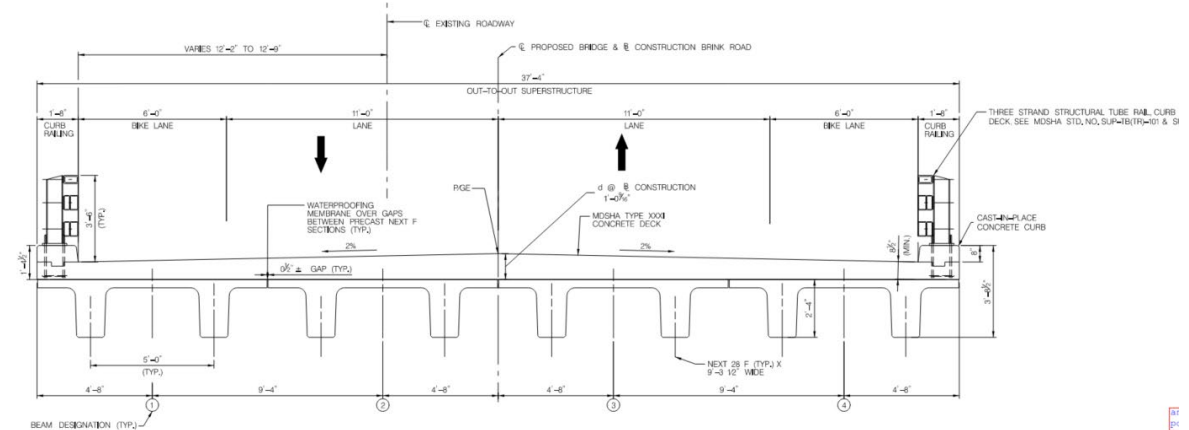
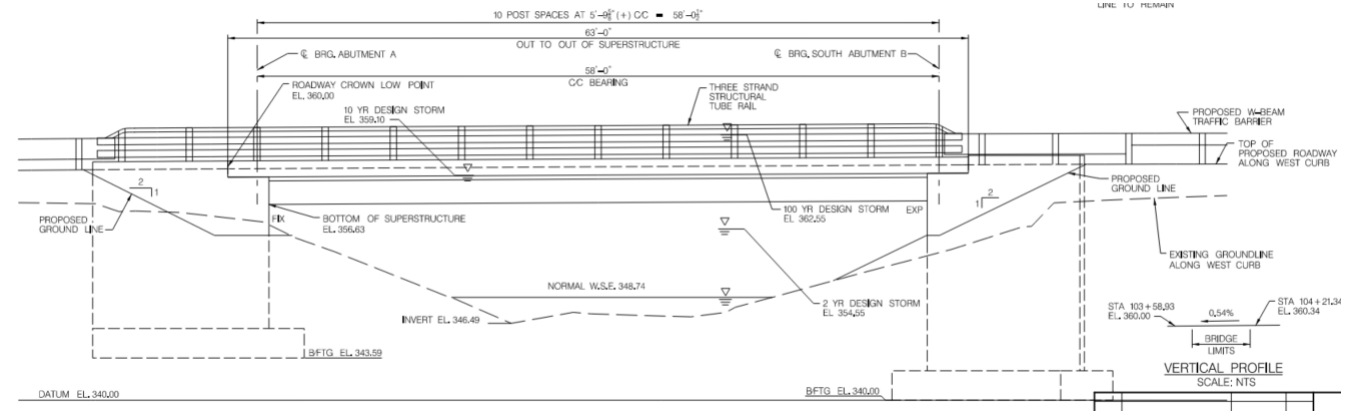




# Brink Road Bridge No. M-0064 over Great Seneca Creek Replacement Project

## Proposed Bridge

- ❖ Approx. 58'-3" Long Single Span
- ❖ Four 9'-4" Wide x 2'-4" High Prestressed Concrete Beams
- ❖ 8 ½" Min. Concrete Overlay
- ❖ 34' Wide Clear Roadway with two lanes two ways
- ❖ 1'-8" Wide 3'-6" High metal railing on Both Sides
- ❖ 37'-4" out-to-out Structure



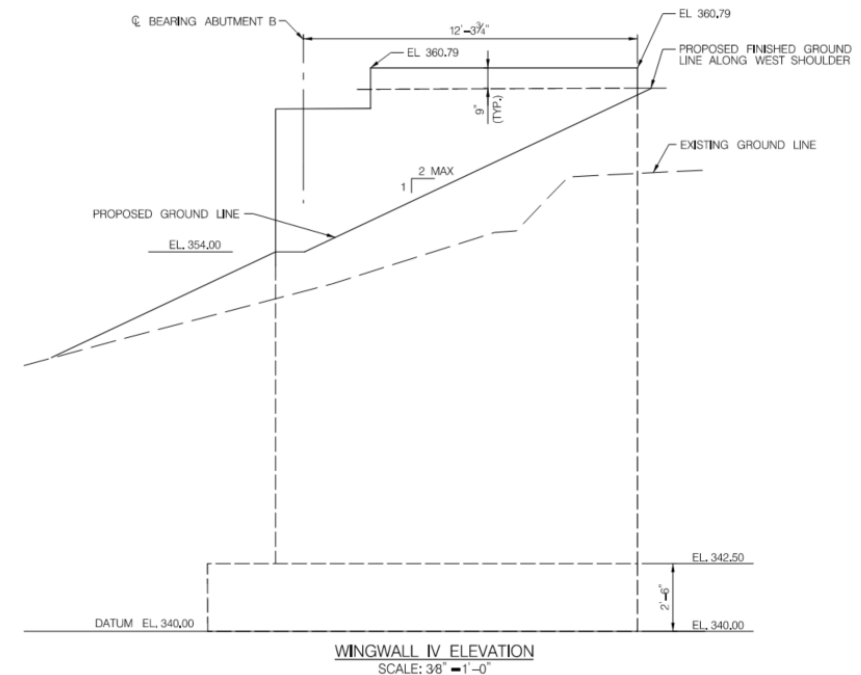
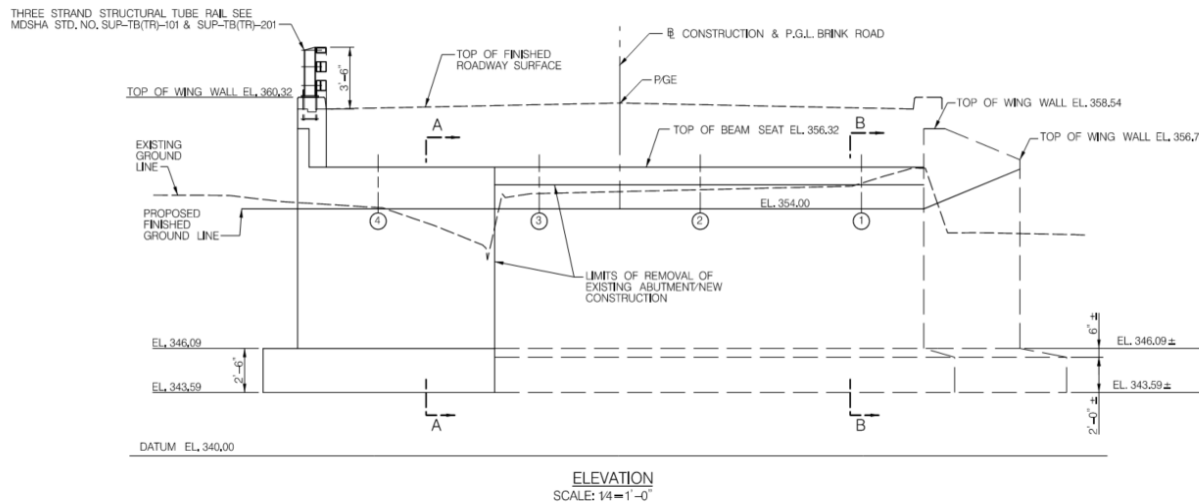
## Elevation and Section View



# Brink Road Bridge No. M-0064 over Great Seneca Creek Replacement Project

## Proposed Bridge

- ❖ Extensions of Existing Concrete Abutments and New Wing Walls
- ❖ Concrete Footing



## Bridge Abutment & Wingwall Elevation



# Brink Road Bridge No. M-0064 over Great Seneca Creek Replacement Project



**Aerial View – Existing Brink Road Bridge No. M-0064 over Great Seneca Creek**



# Brink Road Bridge No. M-0064 over Great Seneca Creek Replacement Project



**Artistic Rendering  
May Not  
Represent The  
Final Design**

**Proposed Brink Road Bridge and Parking Lot**

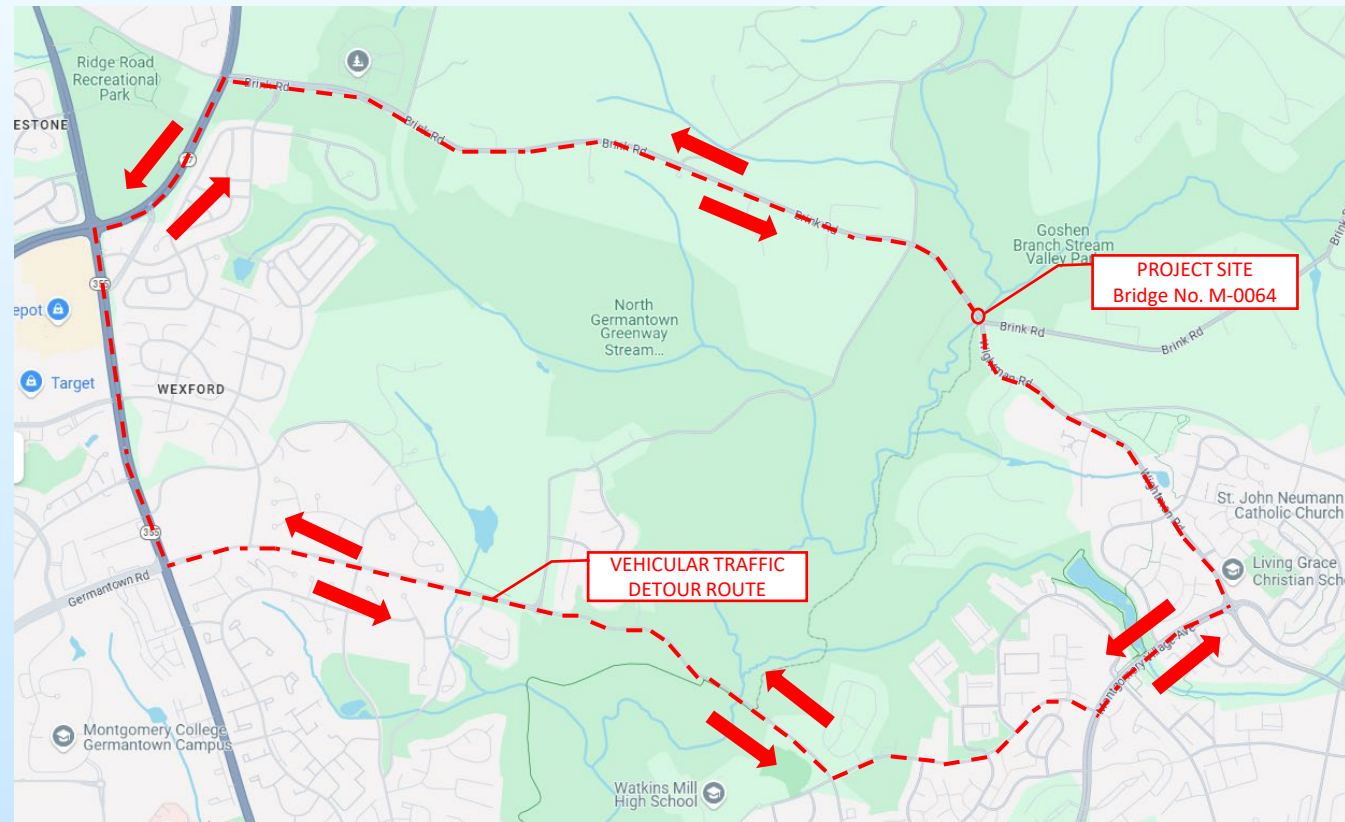




# Brink Road Bridge No. M-0064 over Great Seneca Creek Replacement Project

## Vehicular Traffic Detour Route (7.6 miles) — — — — —

Brink Road – Wightman Road – Montgomery Village Ave Road – Apple Ridge Road – Watkins Mill Road – Germantown Road – Frederick Road (MD 355) – Ridge Road (MD 27) – Brink Road





# Brink Road Bridge No. M-0064 over Great Seneca Creek Replacement Project

- ◆ **Project Status:**
  - ❖ Preliminary design
- ◆ **Project Funding**
  - ❖ Federal Funds           80%
  - ❖ Montgomery County     20%
- ◆ **Project Cost Estimates**
  - ❖ \$900,000     Engineering Cost (Funded)
  - ❖ \$5.7M        Construction and Construction Management Cost (Funded)
- ◆ **Project Schedule**
  - ❖ Design Complete   est. Fall 2027
  - ❖ Begin Construction       est. Summer 2028
  - ❖ End Construction        est. Spring 2029



# Brink Road Bridge No. M-0064 over Great Seneca Creek Replacement Project

- ❖ Proceed with Final Design based on
  - ❖ Comments from permitting agencies:
    - ❖ Maryland Department of Transportation State Highway Administration
    - ❖ Maryland Department of Environment and U.S. Army Corps of Engineers
    - ❖ Maryland-National Capital Park and Planning Commission
    - ❖ Montgomery County Department of Permitting Services
    - ❖ Montgomery County Department of Transportation
  - ❖ Feedback from the community thru May 28, 2025, by:
    - ❖ Tonight's feedback
    - ❖ Online comment form: <https://www.montgomerycountymd.gov/dot-dte/projects/brinkroadbridge/index.html>
    - ❖ Email to [shyanyung.pan@montgomerycountymd.gov](mailto:shyanyung.pan@montgomerycountymd.gov)
- ❖ For Project Information
  - ❖ Contact MCDOT's project manager: ShyanYung Pan, P.E.
    - ❖ Phone: 240-777-2099
    - ❖ Email: [shyanyung.pan@montgomerycountymd.gov](mailto:shyanyung.pan@montgomerycountymd.gov)
  - ❖ Access MCDOT's project webpage:  
<https://www.montgomerycountymd.gov/dot-dte/projects/Brink-Rd-Bridge/index.html>





# Comments & Questions?

To Provide Comments or ask a Question . . .

- **Raise your hand by clicking “Reactions” icon** at the bottom of your screen and then click **“raise hand.”**
- **If you dialed in by telephone** this evening, press **\*9** on your telephone keypad to raise your hand. When asked to unmute, press **\*6**.
- Type your question into the chat. If time does not allow for all questions to be answered during this evening’s meeting, all questions in the chat will be answered via email in the coming days.





# Brink Road Bridge No. M-0064 over Great Seneca Creek Replacement Project

## THANK YOU FOR ATTENDING

The Project Record will remain open for four weeks to allow any person an opportunity to have their feedback considered.

### Official Closing Date for Submitting Your Feedback

**May 28, 2025**

**at 6:00 p.m.**

**Submissions may be made via:**

**Email to the Project Manager, ShyanYung Pan**  
**[shyanyung.pan@montgomerycountymd.gov](mailto:shyanyung.pan@montgomerycountymd.gov)**

**Or Via the Online Comment Form on the Project Webpage:**

**<https://www.montgomerycountymd.gov/dot-dte/projects/brinkroadbridge/index.html>**

