

# Welcome

## Cheltenham Drive Bikeway

### Hybrid Public Meeting

March 27, 2025  
6:30 pm

*We will begin shortly. The Public Meeting will be recorded.*

**MC DOT**



# Meeting Agenda

1. Public Meeting Format & Zoom Meeting Controls
2. Background Information
3. Existing Conditions
4. Proposed Design
5. Project Status, Funding, and Schedule
6. Q&A



# Virtual Controls

- We are going to go over some basic controls to help you use the Zoom meeting format before we start the presentation.
- Please note that this meeting is being recorded.
  - The video will be posted on the project website after the meeting.
  - If you do not wish to have your voice or likeness recorded, please keep your camera off, and refrain from asking questions using the audio option. Instead, you can send your questions via the chat option.



# Using Zoom

## Muting

- Everyone is on mute. You cannot unmute yourself. We can unmute you during the Q&A time.
- To request to speak, you will need to use the **raise hand** feature. Once we unmute you, you may still need to click a pop-up menu to unmute yourself.
- If you have called in by phone, you can unmute yourself by dialing \*6 once we unmute you.



# Using Zoom (Cont'd)

## Video

- Your camera is off by default. To ensure adequate bandwidth for this meeting, we request that you please keep your camera off during the meeting.



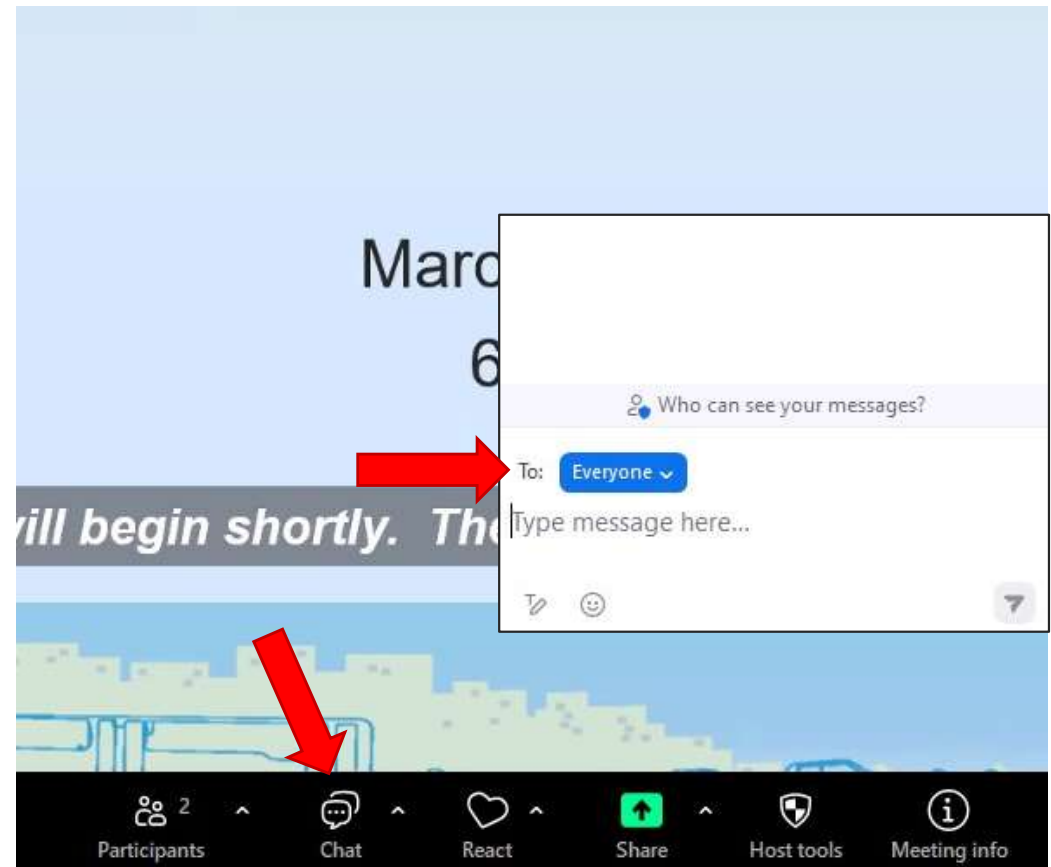
## Using Zoom (Cont'd)

Ask a question (text)

- If you have a question during the presentation, please send it via chat.

### To send a chat:

- ❑ Click “Chat” at the bottom of the menu.
- ❑ In the “To” field, select a name.
- ❑ Type your question and send it.



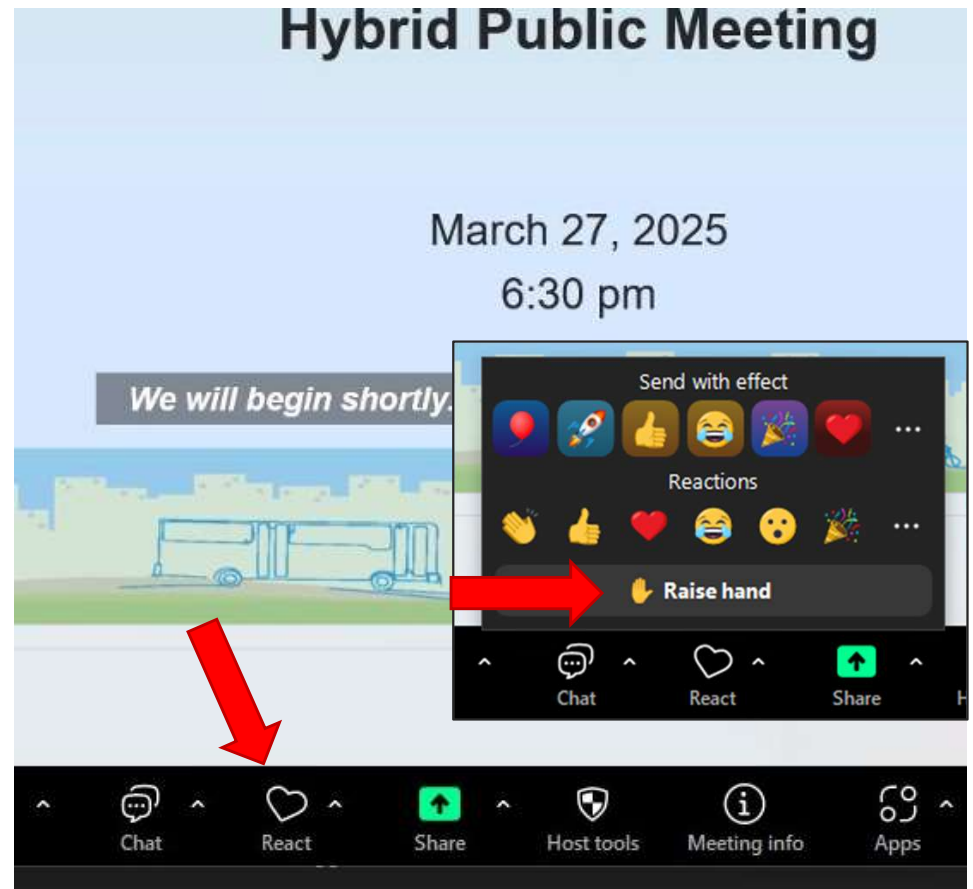
# Using Zoom (Cont'd)

Ask a question (raise your hand)

- If you would like to speak to ask a question or make a comment, please **raise your hand**.

## To raise your hand:

- ❑ Click “React” at the bottom menu (heart button)
- ❑ Click the yellow “raise hand” button
- ❑ If you’ve dialed in by phone, dial \*9

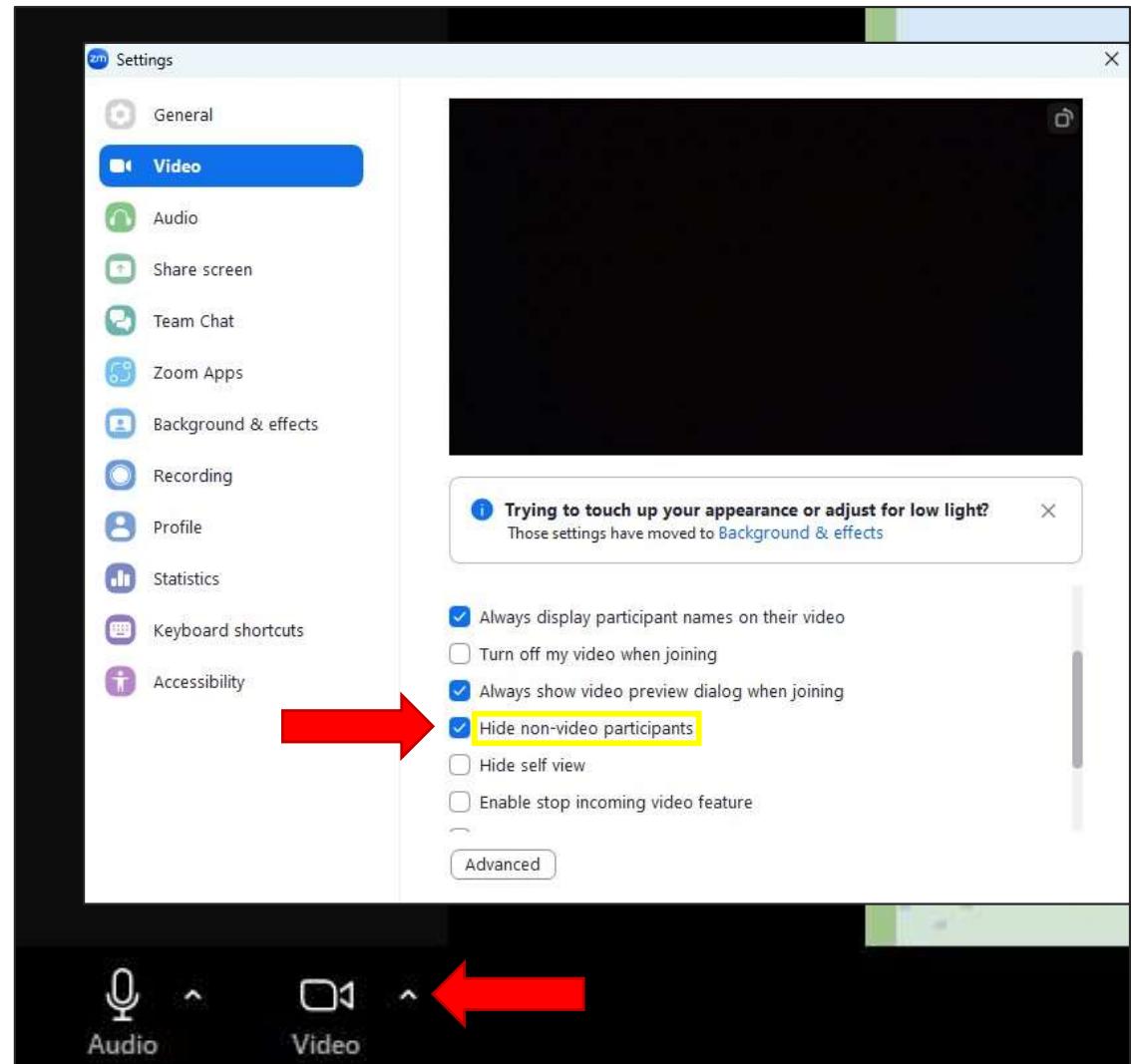


# Using Zoom (Cont'd)

## View

To change your view so that you only see people with cameras on:

- ❑ Click the up arrow next to “start video”
- ❑ Select “video settings”
- ❑ Make sure “Hide non-video participants” is checked





# Project Team

## Montgomery County Department of Transportation:

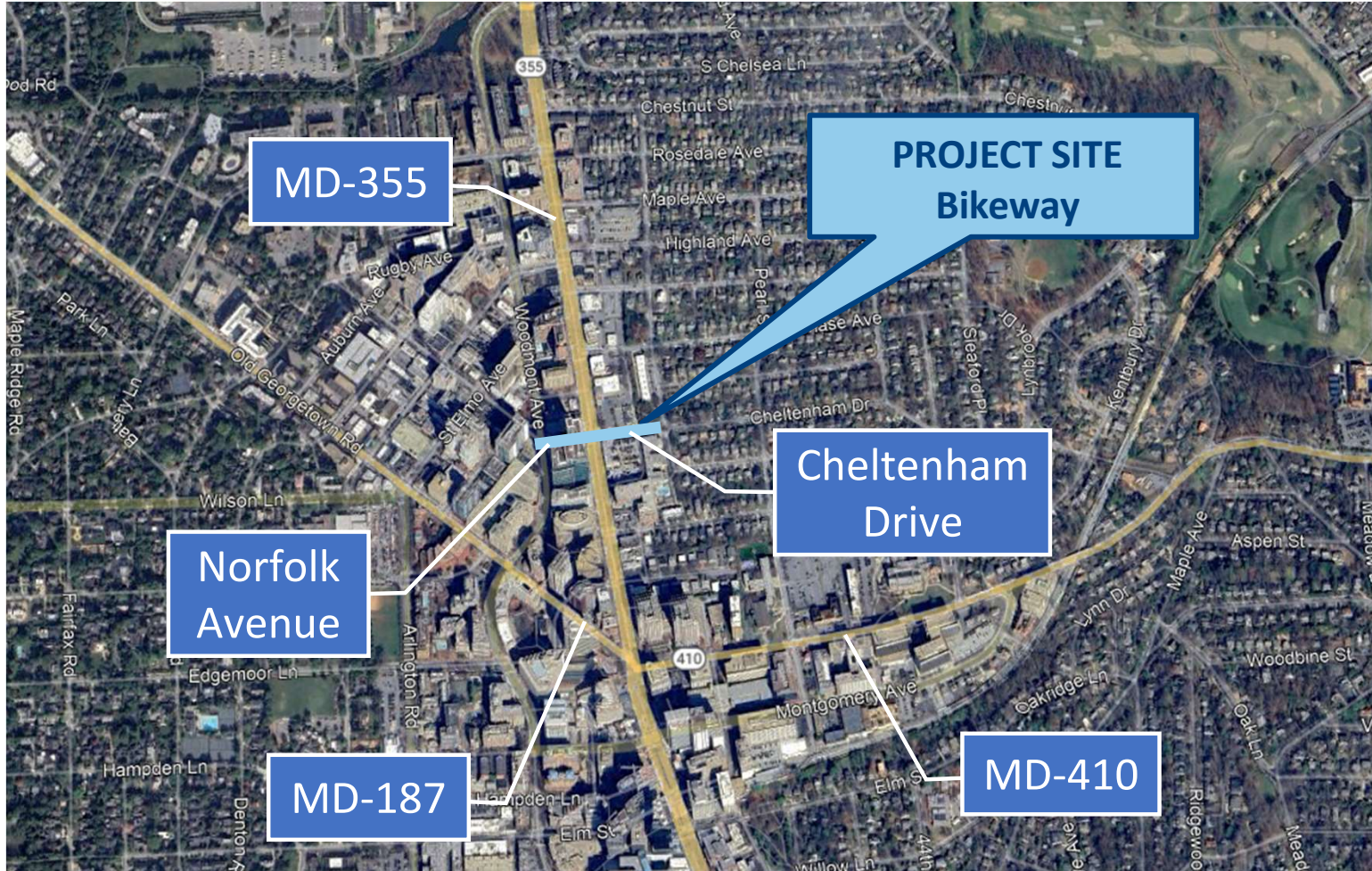
- Hoang Nguyen – Project Manager  
[Hoang.Nguyen@montgomerycountymd.gov](mailto:Hoang.Nguyen@montgomerycountymd.gov)
- Rebecca Park – Transportation Engineering Unit Manager  
[Rebecca.Park@montgomerycountymd.gov](mailto:Rebecca.Park@montgomerycountymd.gov)

## Engineering Consultant – Stantec:

- Lori Adgate, P.E. – Project Manager  
[lori.adgate@stantec.com](mailto:lori.adgate@stantec.com)
- Uma Kota, P.E. – Project Engineer  
[uma.kota@stantec.com](mailto:uma.kota@stantec.com)



# Project Location



# Project Background Information

- **Montgomery County Bicycle Master Plan**
- **Bethesda Bikeways Network**

## Norfolk-Cheltenham (this project)

- Separated bike lanes
- Coordination with MD SHA

## Woodmont Ave Phase 2 (north)

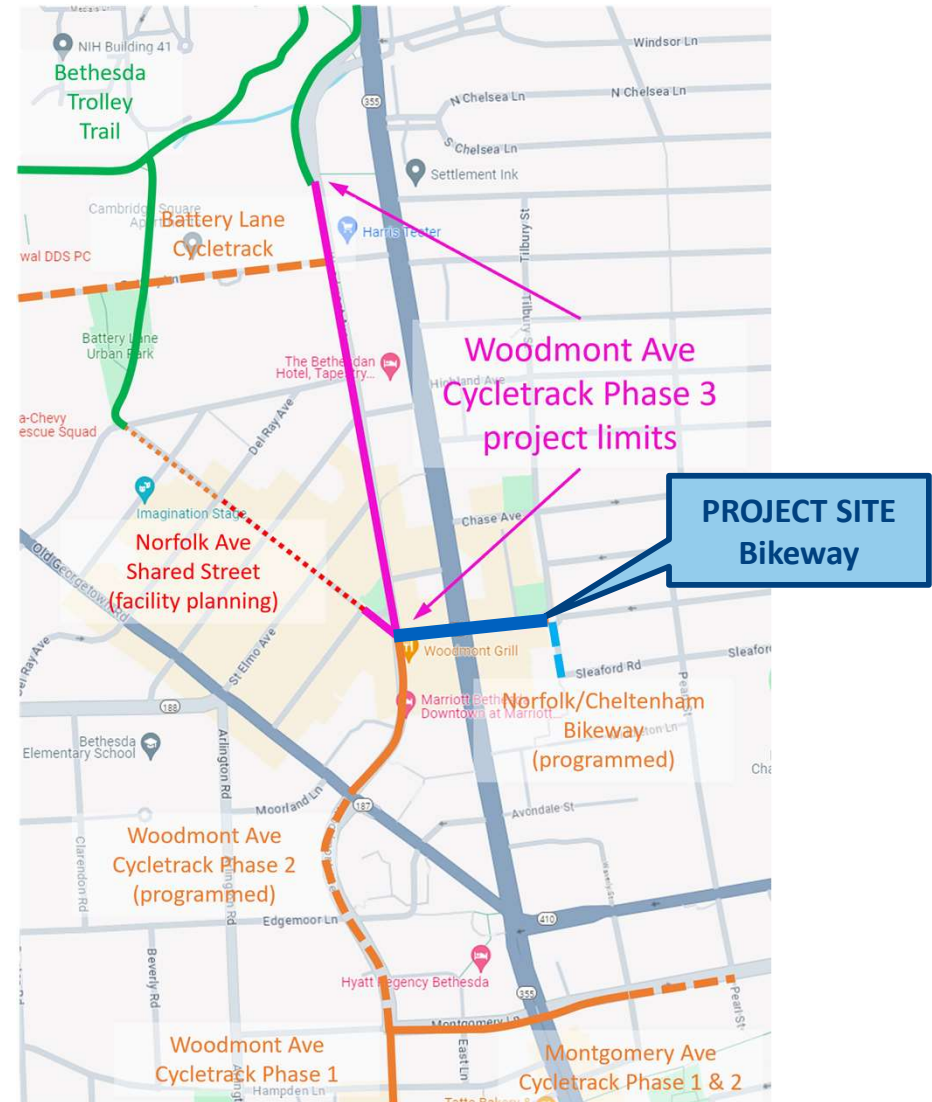
- Cycle track from Montgomery Lane to Norfolk Avenue
- Currently in final design and construction is planned for FY26

## Woodmont Ave Phase 3

- Future cycle track
- Not funded for design or construction

## Norfolk Ave Shared Street

- Future cycle track
- Not funded for design or construction



# Existing Site Conditions

## Norfolk Ave / Cheltenham Drive



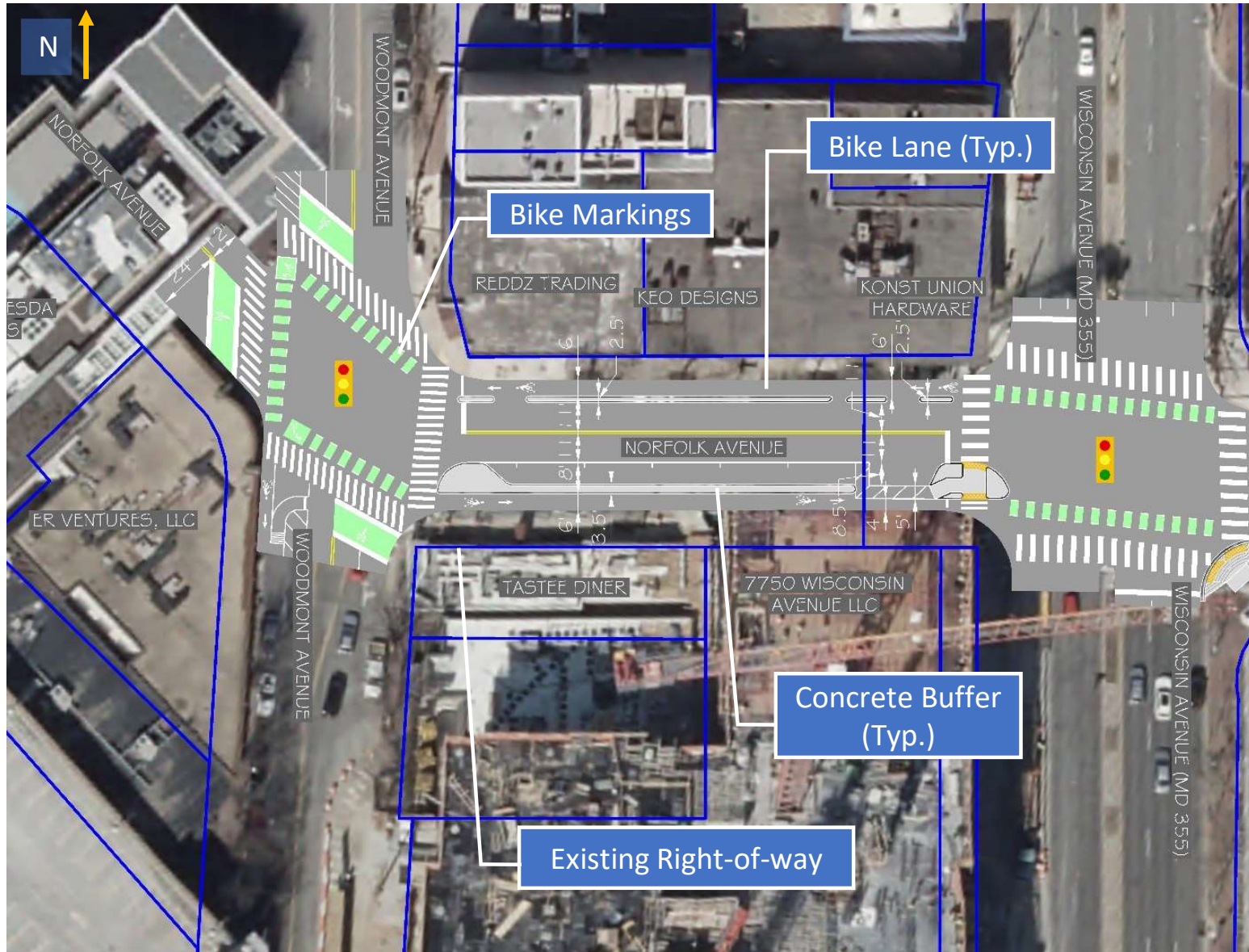
Looking east along Norfolk Ave  
at Woodmont Ave



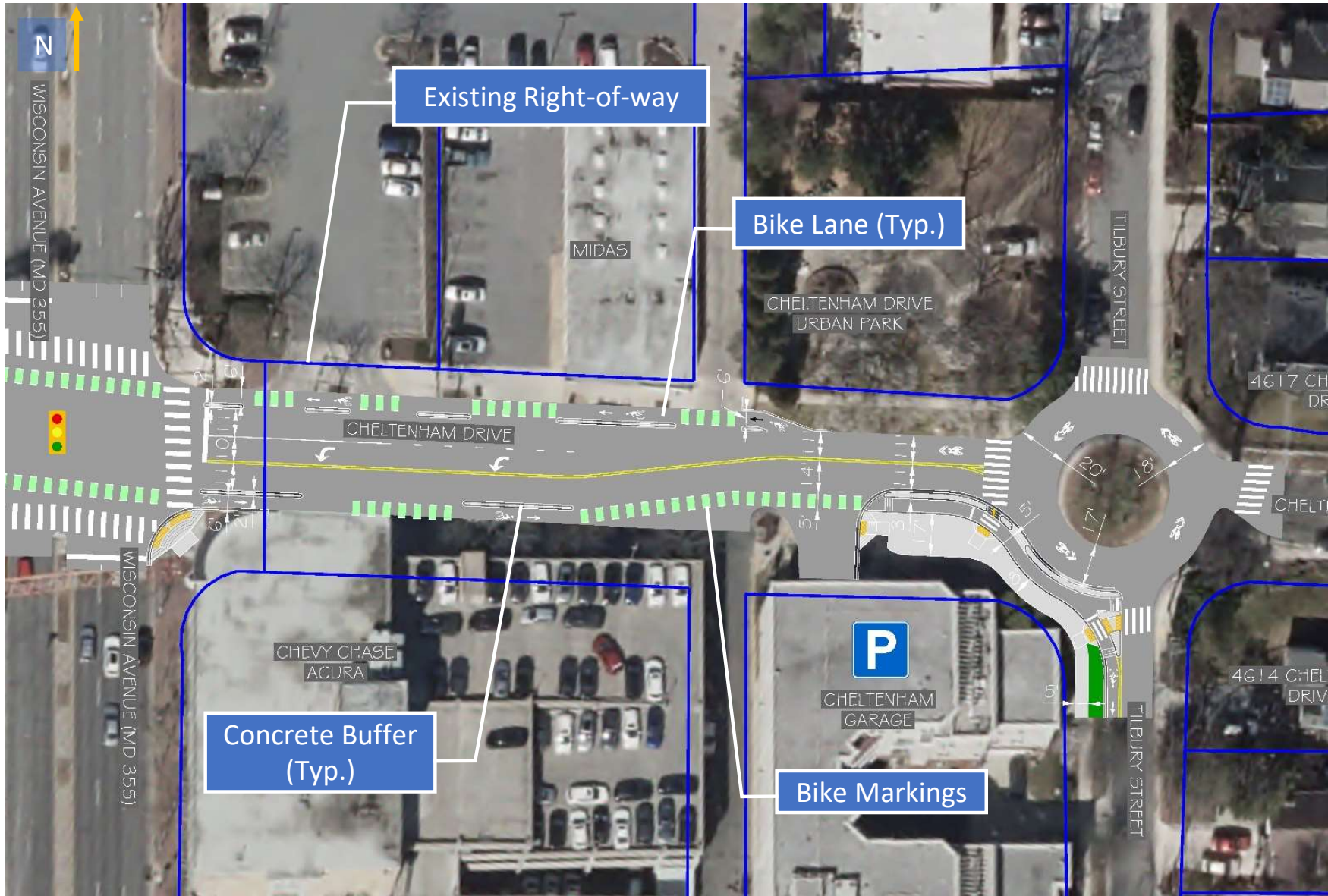
Looking east along Cheltenham Dr  
at Wisconsin Ave (MD 355)



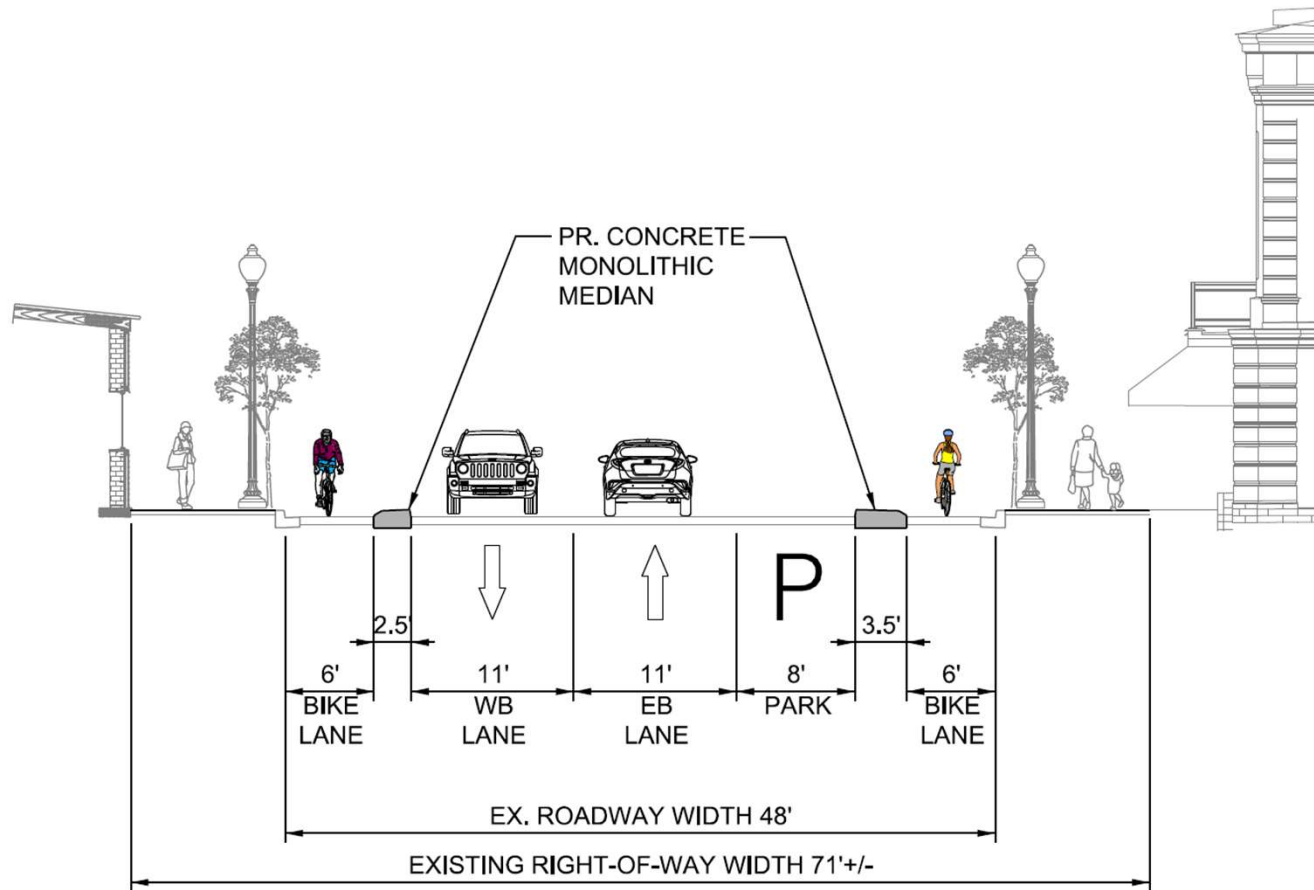
# Proposed Design



# Proposed Design



# Typical Section

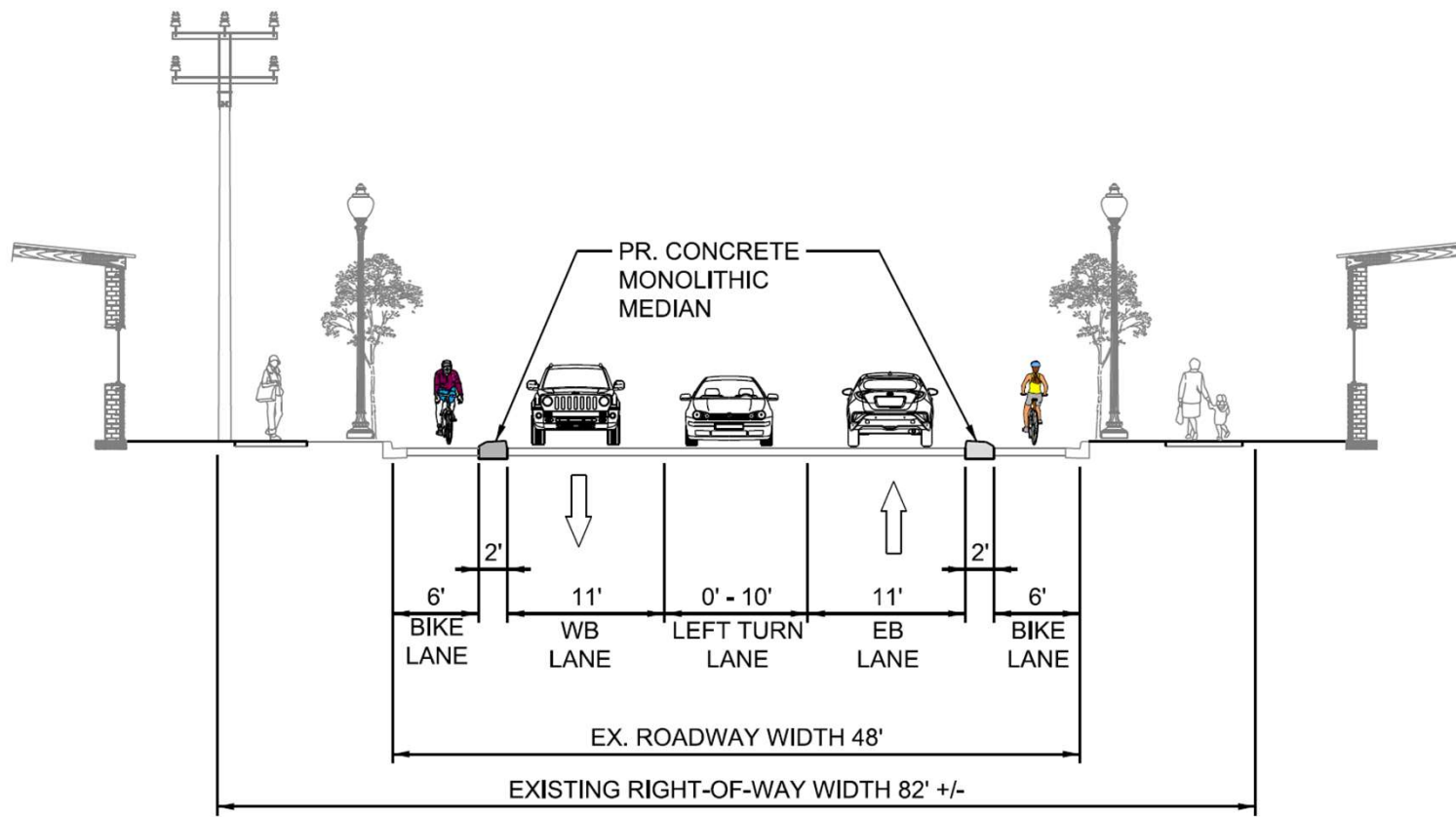


## Norfolk Avenue

From Woodmont Ave to Wisconsin Ave (MD 355)



# Typical Section



Cheltenham Drive  
From Wisconsin Ave (MD 355) to Tilbury Street





# Project Timeline





## Project Cost Estimate

|                                      |                      |
|--------------------------------------|----------------------|
| Engineering Design Cost              | \$700K               |
| Land Acquisition Cost                | \$0K                 |
| Utility Relocation Cost              | \$200K               |
| Construction Cost                    | \$1.3M               |
| <b><i>Total Project Estimate</i></b> | <b><i>\$2.2M</i></b> |



# Contact



Comments due by **April 28, 2025**



Hoang Nguyen  
*Project Manager*



240-777-7243



Hoang.Nguyen@montgomerycountymd.gov



<https://www.montgomerycountymd.gov/dot-dte/projects/cheltenham/index.html>



# Question and Answer

## Virtual Participants:

- Cameras and microphones have been turned off to reduce the bandwidth of the meeting
- To ask a Question
  - Click on the “Reactions” icon and then click “Raise Hand.” You will be asked to unmute when it is your turn to speak.
  - If you dialed in by telephone, press \*9 to raise your hand and \*6 when asked to unmute.
  - Type your question into the chat box using the icon located at the bottom of your screen.
  - **Please provide your email address on all Chat Box submissions so that, if times run short this evening, we may respond to your question after the hearing.**



**MC DOT**