

VICTIM AND DOMESTIC VIOLENCE SERVICES

# Safe Passage Center (SPC)

Montgomery County's Supervised Visitation & Monitored Exchange Program



## The Safe Passage Center (SPC) for Supervised Visitation and Monitored Exchange is a family friendly and safe access site for families in Montgomery County, MD, with a Montgomery County Court Order.

The Center's goal is to enable children to remain close to both parents regardless of the family situation or parental conflict. The Center is staffed by trained visit monitors and security guards who remain neutral in family disputes. The Center has evening and weekend hours and features separate parking lots, entrances and waiting rooms so that parents do not meet on site.

What are reasons for referring to the Safe Passage Center for visitation and/or monitored exchange?

- Domestic Violence
- Mental Health Concerns
- Substance Abuse Issues
- Extended Parental Absence
- Child Neglect and/or Abuse
- Family Conflict



Family Services, Inc.

PART OF THE SHEPPARD PRATT HEALTH SYSTEM

# FREE

services for families with a Montgomery County Order.

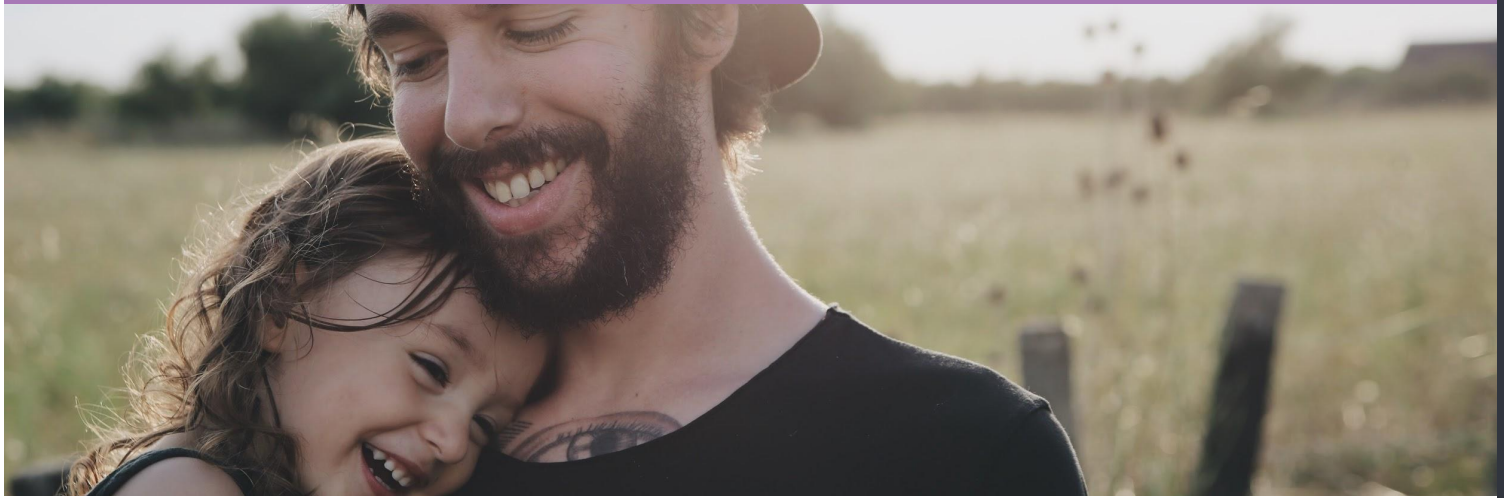
For more information please call 301-417-8939 or email us at [safepassagecenter@fs-inc.org](mailto:safepassagecenter@fs-inc.org).

1010 Grandin Avenue  
Rockville, Maryland 20851  
[www.fs-inc.org](http://www.fs-inc.org)

United Way #8098  
CFC #2894  
MD Charity Campaign #3190



# Safe Passage Center (SPC)



## OUR PROGRAM AND SERVICES INCLUDE:

### Supervised Visitation

Allows parents in high conflict or high risk situations to maintain their bond with their children and have access to their children in a safe and supervised environment. There is no contact with the other parent, which allows for a less stressful visit for the parent and child(ren).

### Monitored Exchange

SPC staff will supervise the transfer of a child from the residential to the visiting parent at the start of the parent/child contact, and back to the residential parent at the end of the contact. The supervision is usually limited to the exchanges, and the remainder of the parent/child visit is unsupervised.

### Safety Features

- On-site security staff
- Secure screening with metal detector
- Separate waiting areas for parents
- Separate entrance and exits
- Cameras at the entrance and in hallways
- Separate parking lots

### Cost

The service is offered free of charge to families who have a Montgomery County Order. The SPC is funded by Montgomery County Department of Health and Human Services and operated by Family Services, Inc.

The SPC is a member of the Supervised Visitation Network (SVN). The SVN is an international membership network that establishes standards and ethics, promotes education and advanced professionalism in the field of supervised visitation.