



May be useful when aviation has been requested to monitor their location or that of other aircraft.

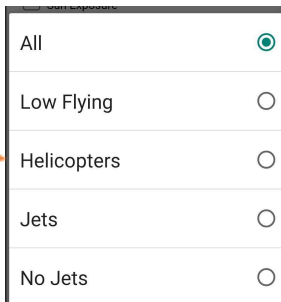
❖ Select Aircraft Overlay

- Under realtime data on right side (Layers Tab)



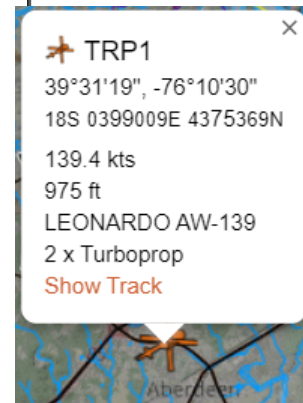
❖ Select Helicopter Only

- Under Aircraft Dropdown



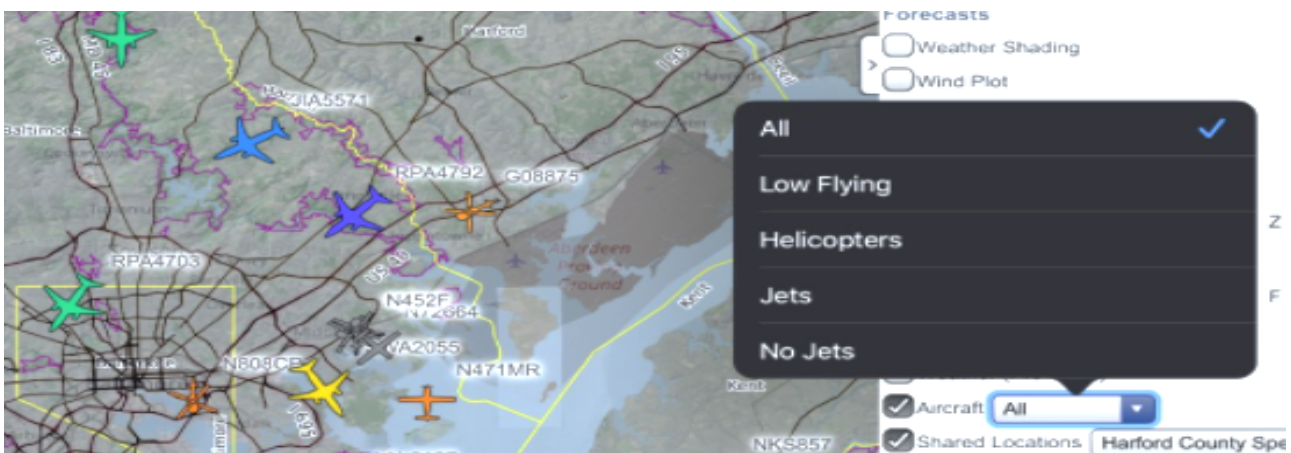
- Helicopter will populate when available
- Similar concept as Flight Tracker App or similar

❖ Click on aircraft for more info



❖ Aircraft color corresponds w/ altitude

N/A 1000ft 2000ft 4000ft 6000ft 10k 20k 40k



At times, low flying aircraft (particularly in remote valleys, or after landing) will not be visible on the map. There are expected limitations, however overall ADS-B coverage is good and no filtering or blocking of military, firefighting or medical air assets is done by the data provider. There must be a receiver that can “see” the aircraft and report their locations, and the aircraft must have an ADS-B receiver turned on.