



Montgomery County Fire and Rescue Service

Division of Operations

Emergency Medical and Integrated Healthcare Services

Office of Medical Oversight Clinical Practice Guideline

| | | | |
|-----------------------------------|---|----------------|-----------|
| Title: | Point of Care Ultrasound – POCUS | Number: | 2023 – 02 |
| Date: | August 9, 2023 | | |
| Issued by: | Roger M. Stone MD, MS – MCFRS Medical Director | | |
| Purpose: | <ol style="list-style-type: none"> To define the two distinct use cases for POCUS To define the medical processes for using POCUS To highlight treatment priorities in certain patients identified by POCUS | | |
| Target Patient Population: | <p><u>This CPG replaces and rescinds CPG 2021 - 02</u></p> <p>Medical cardiac arrest patients who remain in PEA after receiving the 3rd dose of Epinephrine or are in PEA at the time of TOR consideration</p> | | |
| Guideline: | <p>*Clinicians using this guideline must be individually authorized by the MCFRS Medical Director</p> <p>USE CASE 1 – To inform transport timing:</p> <pre> graph TD Start[Adult Patient in Cardiac Arrest] --> Q1{Medical Etiology?} Q1 -- No --> End[Continue care as usual] Q1 -- Yes --> Q2{PEA?} Q2 -- No --> End Q2 -- Yes --> Q3{Evidence of Carotid Blood Flow?} Q3 -- No --> End Q3 -- Yes --> Q4{mCPR in place and advanced airway?} Q4 -- No --> End Q4 -- Yes --> C1[Consider transport to CIC at this point] C1 --> C2[Consider that this patient may be in "pseudo PEA" with severe hypotension] C2 --> C3[Consider administering treatments for profound hypotension: • IV fluid bolus • Epinephrine drip (if max dose of bolus epi has been reached)] C3 --> End </pre> | | |



Montgomery County Fire and Rescue Service

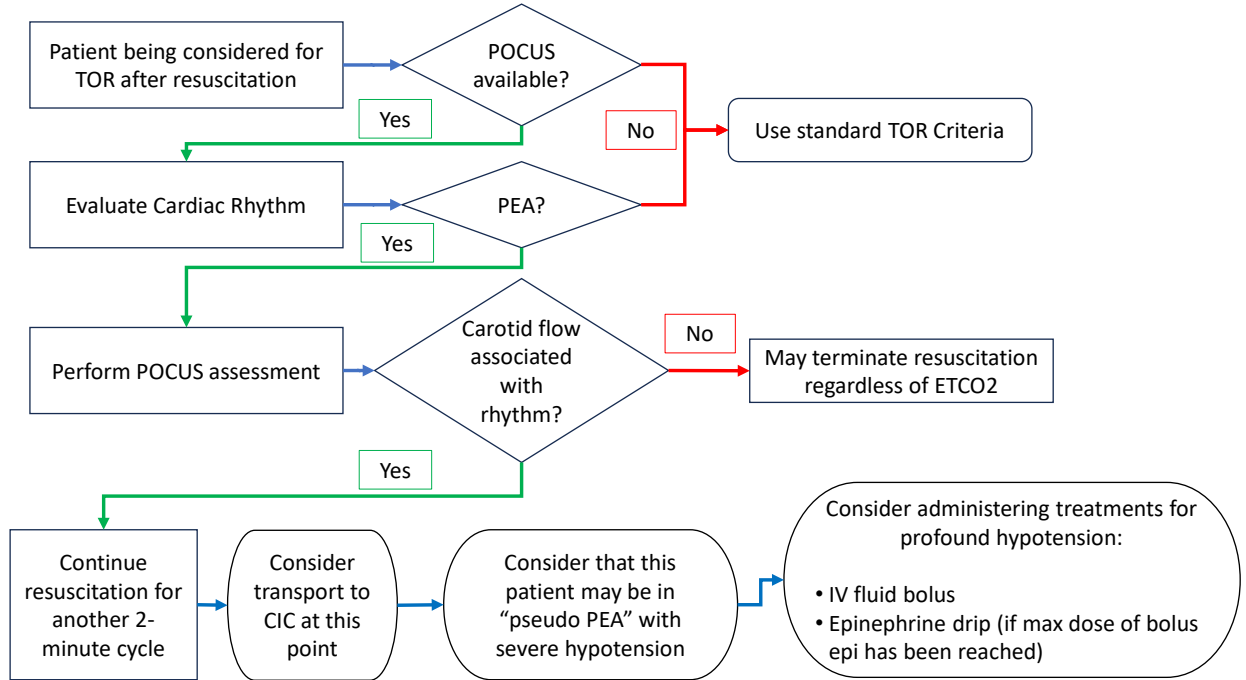
Division of Operations

Emergency Medical and Integrated Healthcare Services

Office of Medical Oversight Clinical Practice Guideline

Guideline:
(continued)

USE CASE 2: TOR decision making:



Documentation:

Each time ultrasound is used to assess a patient it **must be documented as a procedure in eMeds:**

