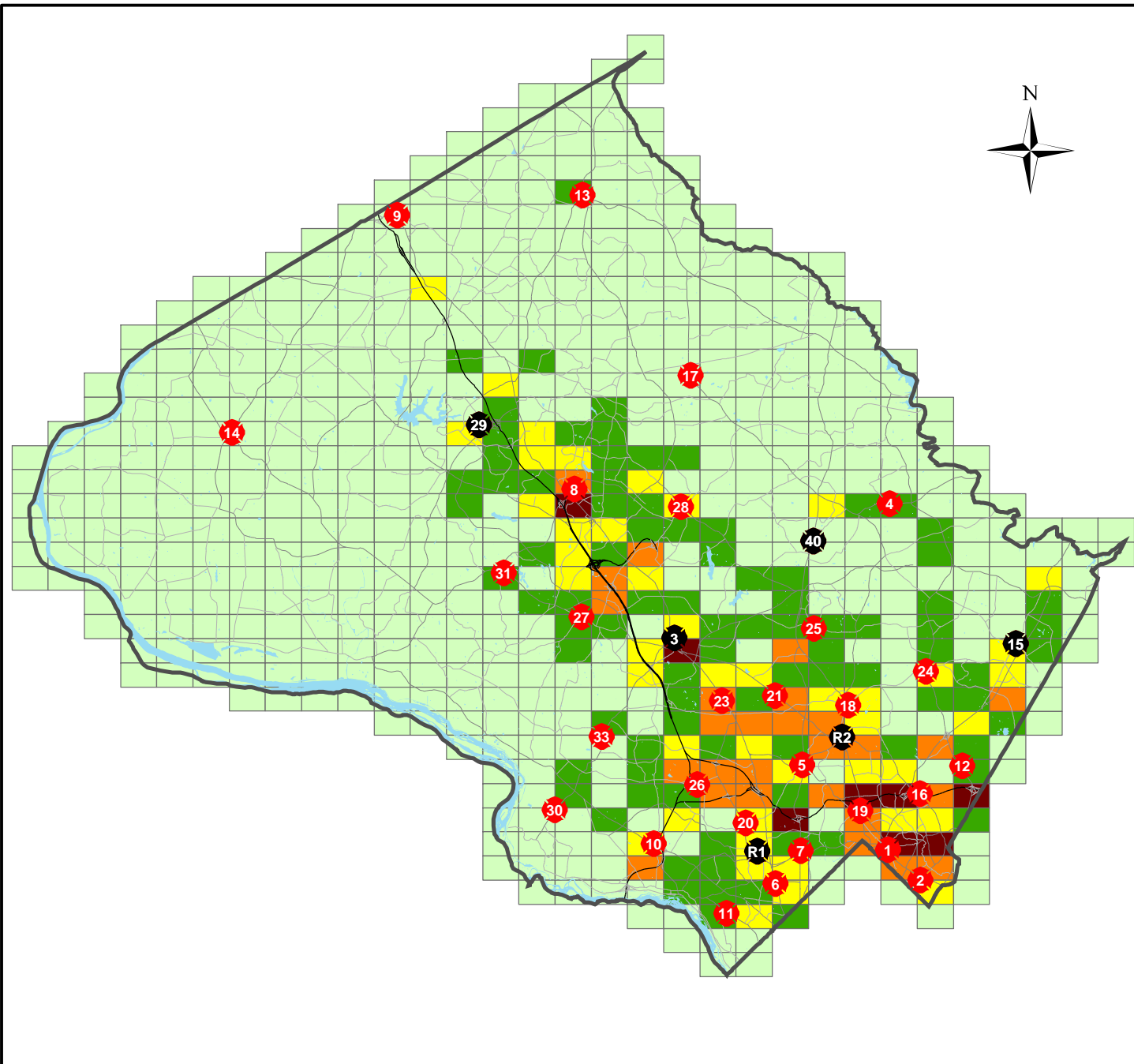


Figure 6
Total PICS 2000-2001



● Recommended Core Rescue Stations

● Fire & Rescue Stations

Total PICS 2000-2001

0 - 25

26 - 73

74 - 145

146 - 239

240 - 416

Travel Distance/ Travel Time	% of 2000 Population in Core Area	% of 2000-2001 PICS in Core Area
3.7 mi/7 min	62.48%	68.81%
4.3 mi/8 min	71.83%	78.06%
5 mi/9 min	82.98%	87.46%
5.7 mi/10 min	90.18%	93.45%

Core Rescue Stations:

Station 3: Rockville

Station 15: Burtonsville

Station 29: Germantown

Station 40: Sandy Spring

Station R2: Wheaton Rescue

Station R1: Bethesda/Chevy Chase Rescue

0 2.5 5 Miles

