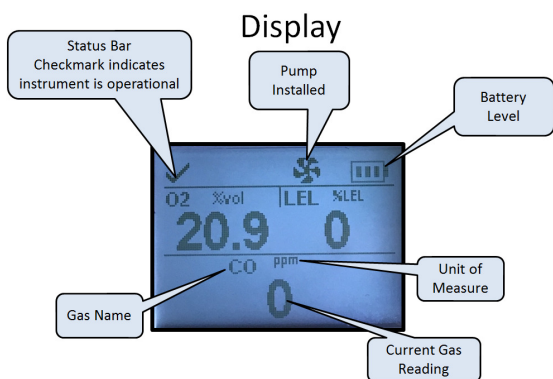


Ventis Pro Quick Start Guide

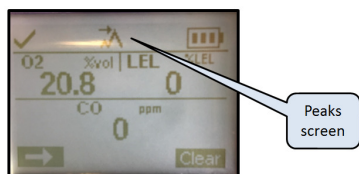
On-Scene Operation

1. Power on Instrument – Perform Pump Test
2. Check Display – O₂, CO, LEL, Battery Level
3. Zero Instrument
4. Clear the Peaks



Operation (Clearing the Peaks)

- Push Power button to scroll to Peaks screen
- Push Enter button to clear the Peaks

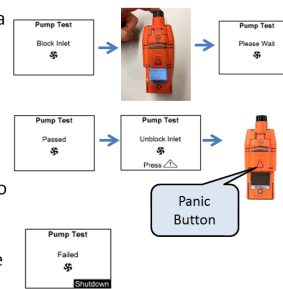


Daily/Monthly Checks

1. Power on Instrument – Preform Pump Test
2. Check Display – O₂, CO, LEL, Battery Level
3. Place Instrument on Ventis DSX Docking Station on a Daily Basis, the docking station will automatically bump test or calibrate the Ventis Pro
4. Allow meter to charge if necessary

Operation (Turn ON)

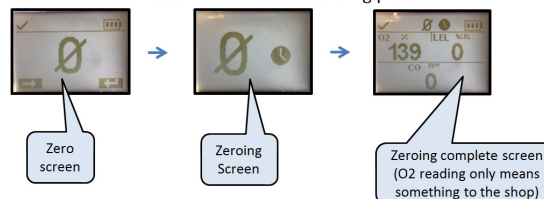
- Unit will prompt you to do a pump test
- Block the inlet with your finger
- After the test is complete, remove your finger and press the **panic button**
- Unit must pass pump test to be used
- If the unit Fails repeat the process. If it continues take the meter out of service



Operation Zeroing

- **Remember** only perform in **CLEAN AIR – away from any possible contaminants**

- Push Power button to scroll to zero screen
- Push Enter button to start zeroing process



Operation (Turn OFF)



Alarm Settings Oxygen (O₂)

- Detects presence of Oxygen in percent by volume of air (% vol)
- In clean air, sensor should be reading 20.9%
- Low Alarm = 19.5% vol
- High Alarm = 23.5% vol
- Measurement Range = 0 – 30% vol

Alarm Settings Carbon Monoxide (CO)

- Detects the presence of CO in parts per million (ppm)
- In clean air, sensor should be reading 0 ppm
- Low Alarm = 35 ppm
- High Alarm = 70 ppm
- Measurement Range = 0 – 2,000 ppm

Alarm Settings Combustible Gas (LEL)


- Detects the presence of Combustible Gases in percent LEL Methane (% LEL)
- In clean air, sensor should read 0% LEL
- Low Alarm = 10% LEL
- High Alarm = 20% LEL
- Measurement Range = 0 – 100% LEL Methane

Any maintenance repair requests must be entered into the Telecommunications Service Request (TSR) form located at the following website:

<http://www.montgomerycountymd.gov/frs-ql/logistics/techoperations.html>

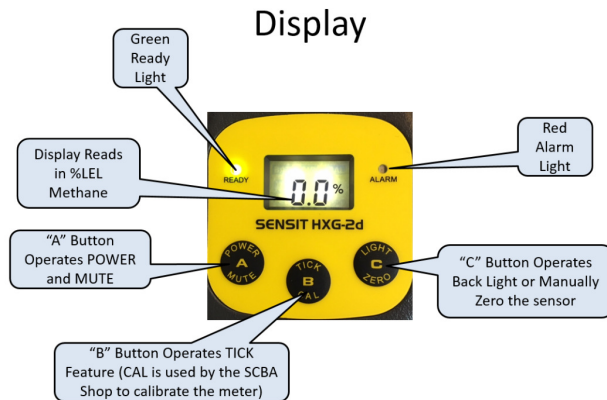
SENSIT HXG-2d Quick Start Guide

ON-Scene Operation

1. Use Leak Detector alongside Ventis Pro Multi gas meter to ensure **NO ALARM** conditions are present 
2. Turn ON in clean air (**REMEMBER:** Instrument does an automatic zero on startup)
3. Push "B" button to operate "TICK" mode

Operation (Turn ON)

- **MUST BE TURNED ON IN CLEAN AIR**
- Push & Hold "A" Button until the unit powers up and then release button
- The unit will go through a warm up and will **AUTO ZERO**
- This can last from 40 – 180 seconds before the unit can be used



Operation ("Tick" mode)

- Before using "Tick" mode the environment needs to be checked with the Ventis Pro to ensure **NO ALARM** conditions are present
- Push & release the "B" Button to hear a tick rate
- As the instrument is moved closer to a combustible source, the tick rate will increase
- Pressing the "A" Button will deactivate the "Tick" mode



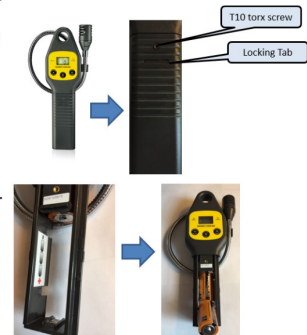
Operation (Turn OFF)

- Press and Hold "A" Button for 5 seconds until the instrument displays "Power OFF" then release the button



Changing Batteries

- Locate T10 torx screw on front and loosen with provided tool
- Depress locking tab with coin or flat object and pull the battery sleeve away from the display
- Check Polarity of batteries on inside of battery holder
- Insert batteries into the holder from the front of the meter
- Replace battery sleeve allowing the locking tab to snap in place and tighten T10 screw



Alarm Settings

- Detects the presence of Combustible Gases in percent LEL Methane (% LEL)
- In clean air, sensor should read 0%
- Alarm = 10% LEL
- Measurement Range = 0 – 100% LEL Methane

Daily Checks

1. Power Instrument ON
2. Check Display - % LEL reading and no battery icon is present

Any maintenance repair requests must be entered into the Telecommunications Service Request (TSR) form located at the following website:

<http://www.montgomerycountymd.gov/frs-ql/logistics/techoperations.html>