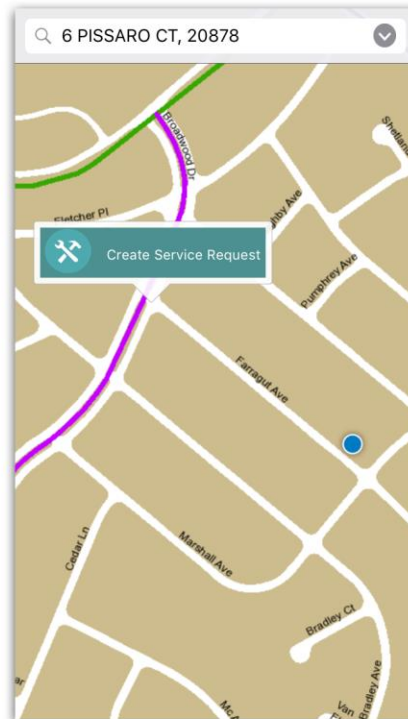
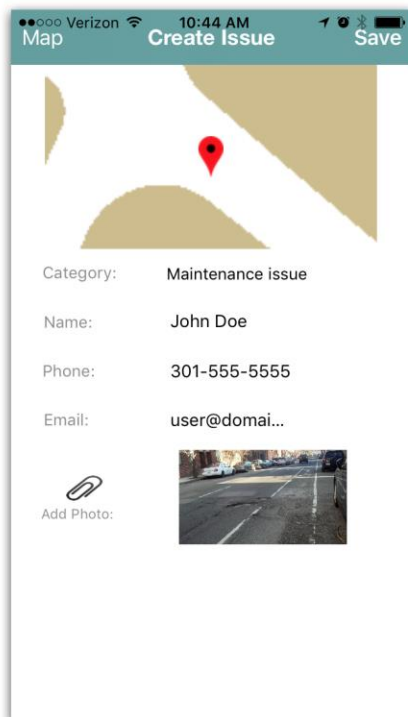




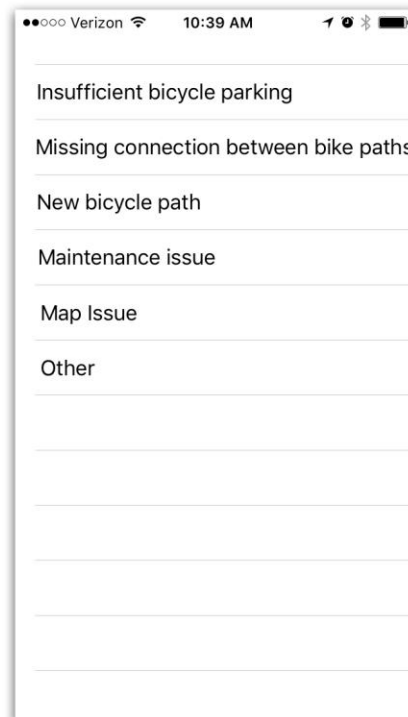
MoCoBikeMap is available from the Apple App Store.



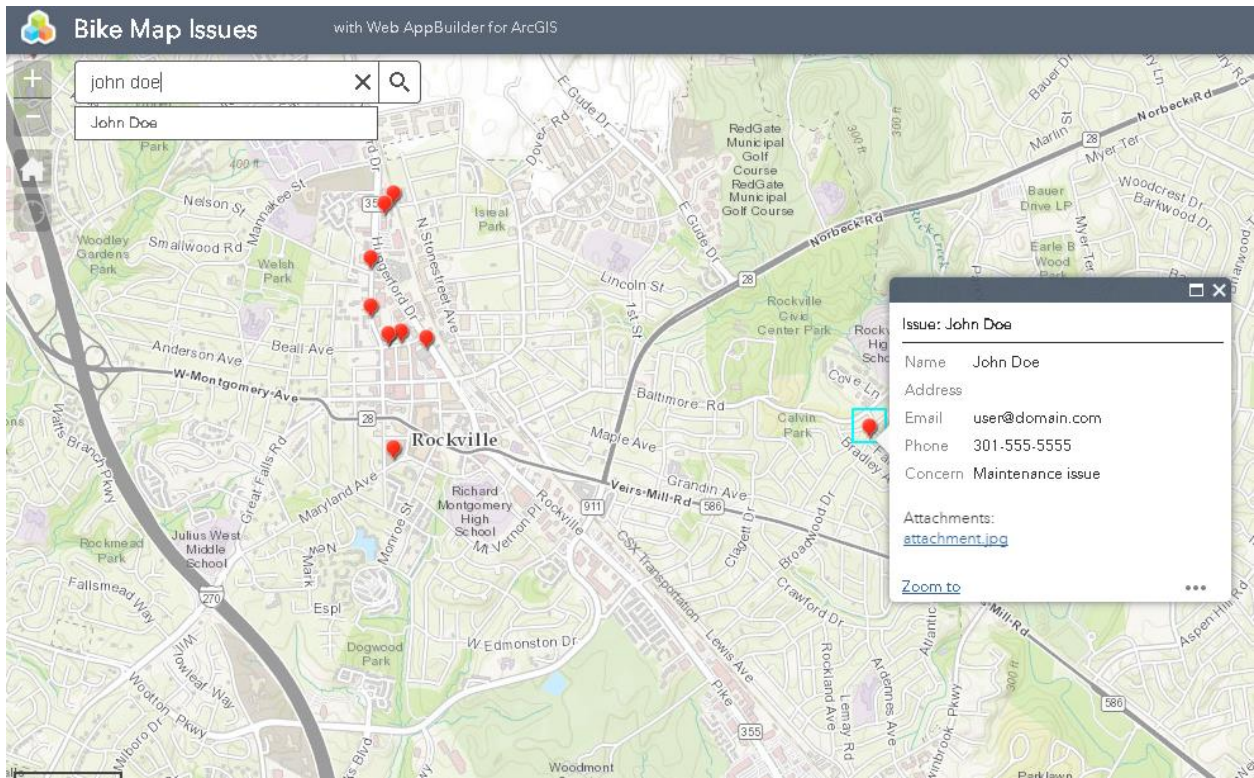
Map automatically zooms to user location. User can tap the map to initiate a service request for a location.



User can submit contact information and optionally a photo of the issue.



Several issue categories are offered in a menu to the user.



On the above application, DOT's Bikeways Coordinator can review service requests submitted via the app.

Below: Photo of pothole attached to service request.

