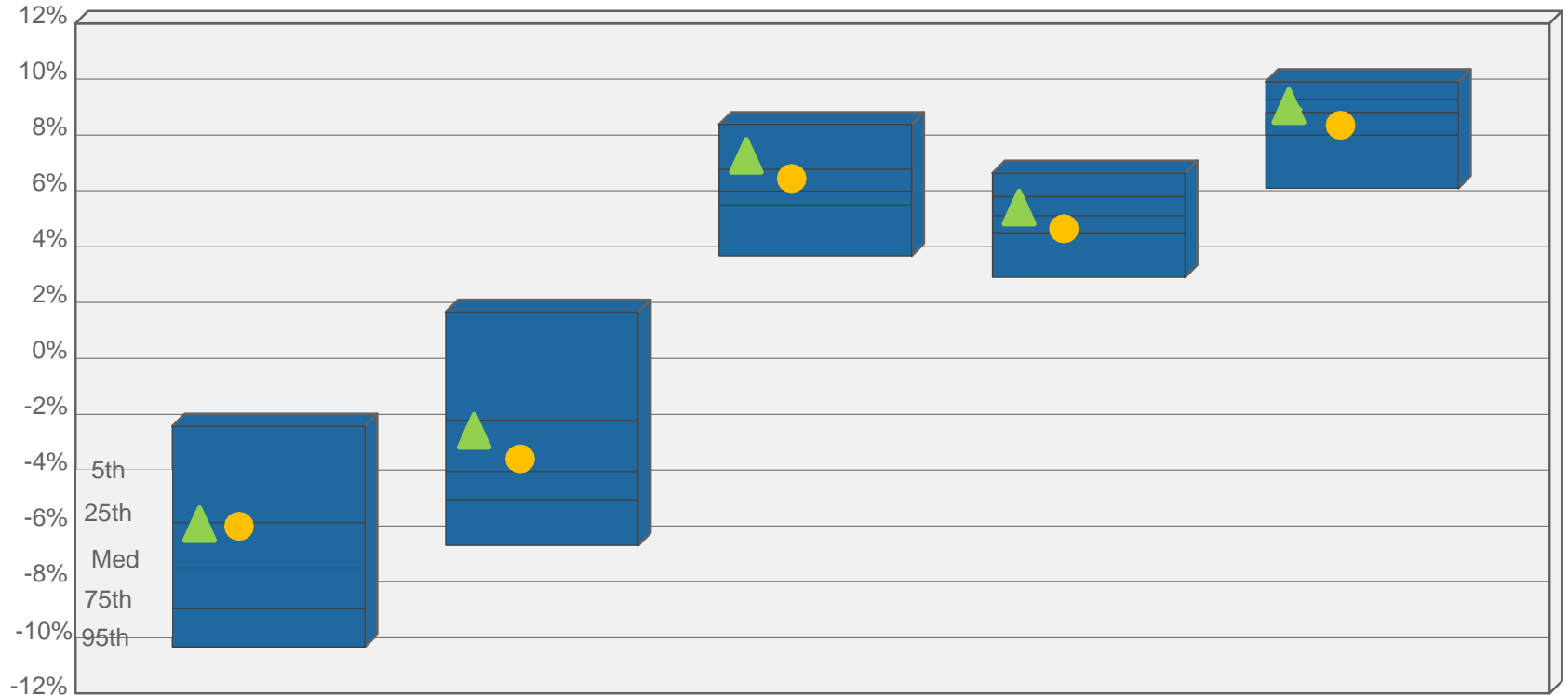


PERFORMANCE COMPARISON

Total Trust Composite

Periods Ended December 31, 2018



	1 Quarter	1 Year	3 Years	5 Years	10 Years
Total Trust	-6.12 (30)	-2.43 (27)	7.07 (22)	5.20 (46)	8.96 (42)
Policy Index	-6.03 (28)	-3.65 (42)	6.30 (46)	4.52 (74)	8.44 (70)
5th %tile	-2.43	1.66	8.38	6.64	9.91
25th %tile	-5.89	-2.22	6.91	5.79	9.28
Median	-7.51	-4.05	6.17	5.11	8.81
75th %tile	-8.97	-5.07	5.49	4.50	8.27
95th %tile	-10.33	-6.70	3.67	2.90	6.09
Number of Funds	150	147	137	131	119

The Board compares the performance of the portfolio to that of a universe of peer funds; the universe is constructed by Wilshire Associates Incorporated, a national consulting firm. The value in parenthesis represents the rank of the total portfolio's performance relative to the peer group for each time period. A lower rank indicates a greater return within the universe relative to the other funds. For example, a one-year rank of (40) indicates that the portfolio achieved a greater return than 60% of the funds represented in the universe over the one-year period.