



Unit 2 Objectives

1. Describe the firefighter's chain of command.
2. Define an incident and describe how the incident management structure is organized.
3. Describe the general responsibilities of each section in the Incident Command System (ICS).
4. Name the two positions above the firefighter in the chain of command.

02-2-S130-EP

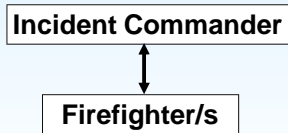
What Is the Incident Command System (ICS)?

- Management tool for responding to emergency situations. Establishes chain of command.
- Adaptable to many types of incidents (flood, hurricane, wildfire, search and rescue).
- Adaptable to size of incident. It can grow to meet the needs of the incident while maintaining span of control.

02-3-S130-EP

“Chain of Command”

The line of authority through which decisions are made, recommendations offered, and work assignments are given.



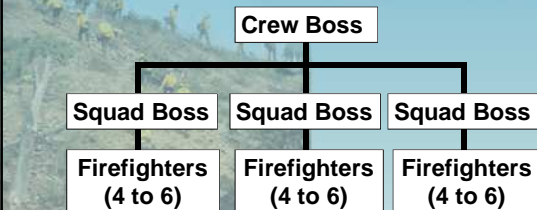
02-4-S130-EP

Small Fire Organization

90% of all wildland fires are suppressed during the initial attack phase, with a small organization.

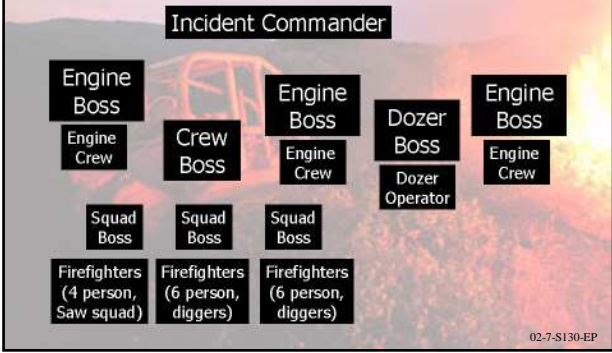


Standard 20-Person Crew Organization



02-6-S130-EP

Some wildland fires require a larger management organization.





What is an "Incident?"

An emergency response situation such as...

- structure fire
- search and rescue
- flood
- hurricane response
- hazardous material spill
- vehicle accident
- wildland fire
- national emergency



02-9-S130-EP

Command

Overall responsibility and decision-making for the incident.

Incident Commander

- Safety Officer
- Information Officer
- Liaison Officer



02-10-S130-EP

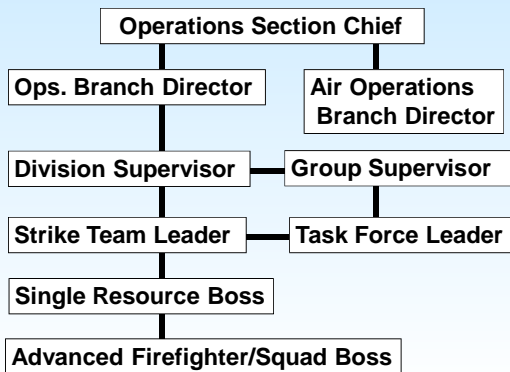
Operations

Develops and implements the strategy and tactics.



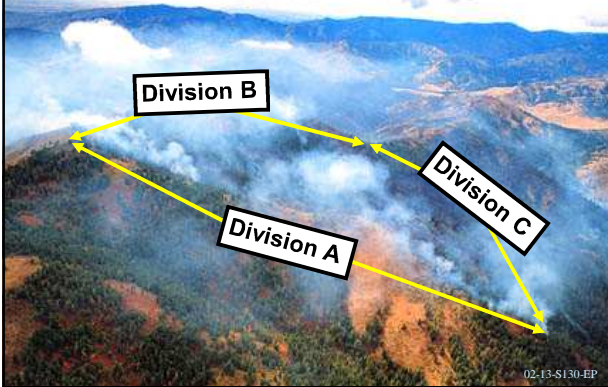
02-11-S130-EP

Operations Organization



02-12-S130-EP

To maintain span of control, operations may be divided geographically.



DIVISIONS & GROUPS

- **Division – Geographical**
- **Group – Functional**
- **Specific task to cover any Division**
 - Hazardous Materials Group
 - Structural Protection Group
 - Any function

02-14-S130-EP

STRIKE TEAMS

- **ENGINES – 5**
 - Any Type as long as they are the same
 - Type 1 Strike Team, Type 2, Type 3, etc
- **Dozers – 2**
- **Handcrews – 2**
- **Each Team must have a ST Leader and common communications**

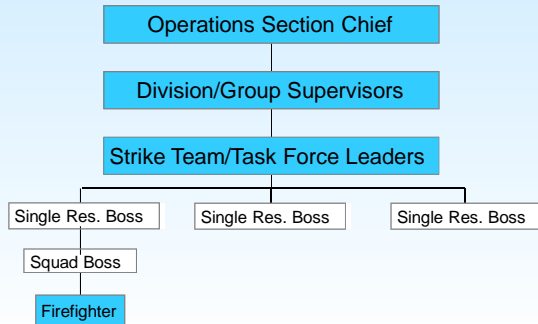
02-15-S130-EP

TASK FORCE

- Any combination of un-like resources to full-fill a specific task
- Must have a TF Leader and common communications
- Could be 3 engines, 1 dozer and hand crew
- Could be Engines – Type 3, 6, 1 and a Tender

02-16-S130-EP

Two positions directly above firefighter?



02-17-S130-EP



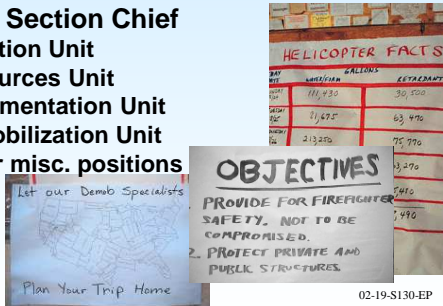
02-18-S130-EP

Planning

Documents and displays the approved strategy and tactics for the incident.

Planning Section Chief

- Situation Unit
- Resources Unit
- Documentation Unit
- Demobilization Unit
- Other misc. positions



Logistics

Provides support and service for all incident personnel.

Logistics Section Chief

- Communications Unit
- Supply Unit
- Medical Unit
- Food Unit
- Facilities Unit
- Ground Support Unit
- Other misc. positions



Finance

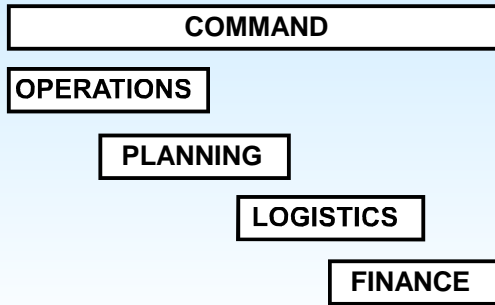
Processes payments, purchasing, contracts, and provides cost estimates.

Finance Section Chief

- Cost Unit
- Procurement Unit
- Compensation/ Claims Unit
- Time Unit
- Commissary Manager
- Other misc. positions



Incident Command System



02-22-S130-EP

Review Unit 2 Objectives

1. Describe the firefighter's chain of command.
2. Define an incident and describe how the incident management structure is organized.
3. Describe the general responsibilities of each section in the Incident Command System (ICS).
4. Name the two positions above the firefighter in the chain of command.

02-23-S130-EP
