

7:00 p.m.

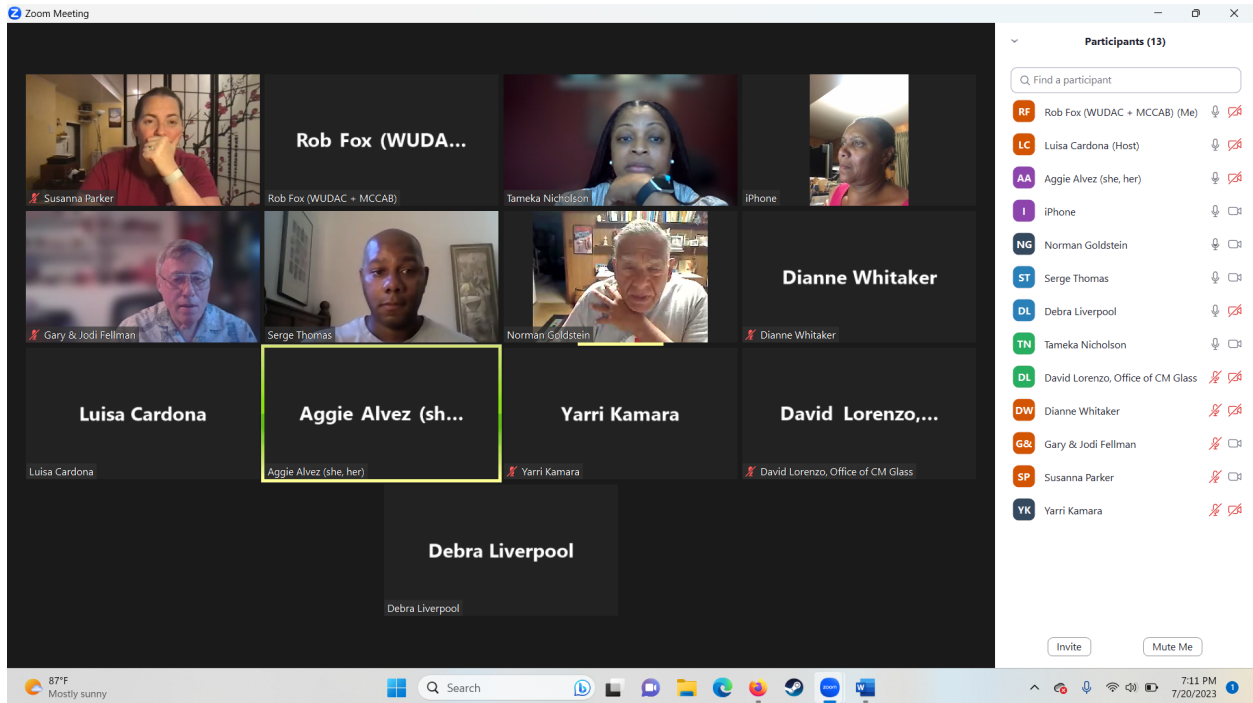
Call to Order & Welcome

Meeting Protocols Introduction

Aquilla Ridgell Chair

Objective: Welcome, Review of protocols for online, meeting

Guest introduction



7:15 p.m.

Agenda, Minutes

Aquilla Ridgell, Chair

Objective: Acceptance of agenda and May minutes

July agenda accepted and May minutes accepted.

7:16 p.m.

Mid County Director Report Luisa Cardona, MCRSO Director

Objective: Update on the Mid County Regional Area

The rent stabilization bill passed, 7 to 4, it limits annual rental increases to inflation +3% but no more than 6% total, exempts new construction for 23 years. Provides mechanisms for landlords to exceed it for capital improvements.

Other updates, the meeting for September, CM NFG wants a joint meeting between the groups on the drone program. We're trying to narrow down a date for that, it would be at the recreation center in early September. Dinner would be provided for all in attendance.

There will be a farm tour 7/22-23. Because our animal shelters are so full they're waving all fees for large dogs. The rainscapes program rewards rebate applications open up August 1st. The county will provide

access to cures to provide hearing aids for eligible residents 60 and older, we want to promote that program. The Marian Fryer town plaza summer concert series are taking place. Want to the Levin family with praise for all their good work. National night out events coming up soon.

7:25 p.m.

Wheaton Urban District Advisory Committee Report

Rob Fox, WUDAC Liaison

Objective: Updates

Last WUDAC meeting was discussing

Luisa – an MOU for having a youth treatment facility has been created based on prior feedback sessions

7:35 p.m.

Recognition of Any Elected Officials TBD

Objective: Provide an opportunity to any elected officials or representatives to give brief updates.

David Lorenzo CM Glass – A week and a half ago CM Glass launched an anti hate task force in response to an uptick in bias incidents in MoCo. Recently neighborhoods in Silver Spring were targeted with burning and removal of pride, BLM, Ukraine flags. The purpose is to engage MoCo residents and improve safety, they're going to hold several meetings with those posted online somewhere. Legislation to prohibit right turns on red in busy downtowns, give head starts to bikes/pedestrians, require MoCo to conduct a review when students are hit and determine what about the road design led to a student being hit by a car. The final legislative day before recess is next Tuesday.

Aggie Alvez – there's a county committee on hate violence that's been around for a number of years. What's the thinking behind creating a separate task force when there's a committee on hate violence?

David – would you be able to put your contact information into the chat so we can talk more about this?

Arquilla – is there any legislation on safe streets and education?

David – there is some portion about that, even though it's an engineering bill and the design of the roadway.

Gary Feldman – the approach the council is taking with right turn on red won't be effective, as once people are used to making a turn they assume they'll be able to going forward. We should prohibit right turns on red throughout the county and allow them in specific places where it's appropriate.

David – I'll pass that along.

Arquilla – I agree Gary, as that consistency is helpful.

7:45 p.m.

Office of Health and Human Services - Ageing and Disability Services

Yarri E. Kamara Objective: Overview of Ageing and Disability services

AutoSave Lunch & Learn Presentation - You are viewing Yarli Kamara's screen

File Home Insert Draw Design Transitions Animations Help

Clipboard Slides Font Paragraph Drawing Editing

UPDATES AVAILABLE Updates for Office are ready to be installed, but first we need to close some apps. Update now

Aging and Disability Resource Unit

Staff provide personalized hands-on assistance, referrals to services and specific information to seniors, people with disabilities and caregivers over the phone and in person. It is the primary point of entry for most of the services within Aging and Disability Services. Staff tell residents about benefits and services, help them determine what they are eligible for and can also help them apply.

Monday through Friday 8:30 am to 5:00 pm
We take calls until 7:30 pm on Tuesday, Wednesday, and Thursday

Phone: 240-777-3000
Email: ADS@MontgomeryCountyMD.gov

Disability Services/Older Adult Services at <https://www.montgomerycountymd.gov/HHS/>
Senior Site: <https://www.montgomerycountymd.gov/senior/>

Eligibility Requirements for Select Income-Based Federal and State Programs
<https://aging.maryland.gov/Documents/Eligibility-Criteria/2022%20Eligibility%20Memo%20%20Revised%20March%201%202022.pdf>

Participants 14 Chat Share Screen Record Show Captions Reactions Apps Leave

AutoSave Lunch & Learn Presentation - May 2023 - Saved to this PC Search (Alt+Q) Kamara, Yarli E

File Home Insert Draw Design Transitions Animations Slide Show Record Review View Help

Clipboard Slides Font Paragraph Drawing Editing

UPDATES AVAILABLE Updates for Office are ready to be installed, but first we need to close some apps. Update now

Learn about Programs and Services for Seniors and Persons with Disabilities

Aging and Disability Services Promoting Choice and Independence

Health and Human Services
240-777-3000 or via Maryland Relay at 711
ADS@MontgomeryCountyMD.gov

MARYLAND ACCESS POINT
We provide spoken language interpretation. Say the language you would like to speak. Please wait about a minute for an interpreter to join the call.
We provide sign language interpretation and other reasonable accommodations upon request. Please try to make your request at least 3 business days in advance.
Helpful information on reverse side.

Help Comes in Many Forms

Our staff can help you ask the right questions, clarify your needs, and identify resources.

ADULT PROTECTIVE SERVICES
Social workers and nurses respond to concerns about adults who may be at risk of harm due to abuse, neglect, self-neglect, or exploitation.

IN-HOME CARE
Personal care (bathing, dressing) and chore services for people with disabilities and frail older adults.

HEALTH AND MENTAL HEALTH
Access to insurance providers like Medicare and Medicaid, clinics, pharmacy assistance, and wellness resources. Referral to mental health services.

RESPIRE CARE
Short-term breaks for caregivers of frail older adults and people with disabilities. Respite care can be provided inside or outside the home.

SUPPORT FOR FAMILY CAREGIVERS
Education, support services, and resources for people caring for a loved one.

FOOD/NUTRITION
Senior lunch program including American, Chinese, Korean, Vietnamese, and Kosher meals. Home delivered meals and grocery delivery.

FINANCIAL ASSISTANCE
Services and programs providing financial assistance or tax credits. Includes eligibility screenings and help completing applications.

TRANSPORTATION
Transportation resources in the County, including discounts, escorts, and accessible transportation.

HOUSING
Information about housing options, including subsidized and accessible housing.

OTHER
Referrals for adult day care, legal services, home modifications, hospice, and more.

FOR FURTHER INFORMATION, CALL 240-777-3000
Aging and Disability Services
Alternative formats of this document available upon request.

Slide 2 of 11 Accessibility: Investigate

AutoSave Lunch & Learn Presentation - May 2023 - Saved to this PC Search (Alt+Q) Kamara, Yarrri E. Record Share

File Home Insert Draw Design Transitions Animations Slide Show Record Review View Help

Clipboard Slides Font Paragraph Drawing Editing

UPDATES AVAILABLE Updates for Office are ready to be installed, but first we need to close some apps. Update now

1 Aging and Disability Services Unit

2

3

4 Making a Referral

5

6

7

Slide 4 of 11 Accessibility: Investigate

Making a Referral Call 240-777-3000

- For APS Referrals, you will be transferred to the CPS/APS State Hotline and will speak with a Montgomery County Adult Services Intake (ASI) Social Worker.
- For all other Adult Services Referrals, ADRU will create a Service Request and an ASI Social Worker will follow up to complete the referral.
- For all referrals, please provide detailed information, including:
 - Client's name, DOB, address, phone number
 - Client's medical and mental health diagnoses and medications if known
 - Monthly income, assets, health insurance if known
 - Contact information for family or other supports
 - Client's current level of functioning and ability to complete activities of daily living
- Condition of home environment
- Risk/safety factors for visiting social worker, i.e., aggressive animals in home, weapons, drug activity, communicable illness
- For APS referrals – provide concerns about physical or sexual abuse, neglect by others, self-neglect or financial exploitation

AutoSave Lunch & Learn Presentation You are viewing Yarrri Kamara's screen View Options Kamara, Yarrri E. Record Share

File Home Insert Draw Design Transitions Animations Slide Show Record Review View Help

Clipboard Slides Font Paragraph Drawing Editing

UPDATES AVAILABLE Updates for Office are ready to be installed, but first we need to close some apps. Update now

1 Aging and Disability Services Unit

2

3 Aging & Disability Services Adult Services Section

4 Making a Referral

5

6

Mute Start Video Participants Chat Share Screen Record Show Captions Reactions Apps Leave

Aging & Disability Services Adult Services Section

- Adult Protective Services (APS)
- Public Guardianship Program
- Social Services to Adults (SSTA)
- In Home Aide Services (IHAS)
- Senior Care Funds
- Project Home/Adult Foster Care

AutoSave | Lunch & Learn Presentation - May 2023 - Saved to this PC | Search (Alt+Q) | Kamara, Yarrri E. KY

File Home Insert Draw Design Transitions Animations Slide Show Record Review View Help

Clipboard Slides Font Paragraph Drawing Editing

Record Share

Dictate Designer

Talking: Yarrri Kamara

UPDATES AVAILABLE Updates for Office are ready to be installed, but first we need to close some apps. Update now

1 2 3 4 5 6 7

Slide 5 of 11 Accessibility: Investigate

Adult Protective Services (APS)

COMAR 07.02.16.01

Adult Protective Services is a social services program to assist **vulnerable adults** who are unable to provide for their basic living needs or access necessary professional services, or protect their own interests and are subject to abuse, neglect, exploitation, or self-neglect.

Service provision is normally limited to 6 months in which time risk is reduced. Adult Protective Services makes every effort to stabilize the vulnerable adult in the adult's own home within the community through community support services that reduce risk factors.

AutoSave | Lunch & Learn Presentation - May 2023 - Saved to this PC | Search (Alt+Q) | Kamara, Yarrri E. KY

File Home Insert Draw Design Transitions Animations Slide Show Record Review View Help

Clipboard Slides Font Paragraph Drawing Editing

Record Share

Dictate Designer

Talking: Yarrri Kamara

UPDATES AVAILABLE Updates for Office are ready to be installed, but first we need to close some apps. Update now

1 2 3 4 5 6 7

Slide 6 of 11 Accessibility: Investigate

Public Guardianship Program

Adult Guardianship is a legal procedure in which the court determines if a person's ability to make health and safety or financial decisions for themselves is significantly impaired. If so, the court will then appoint a guardian to act as a substitute decision-maker.

The court may decide to appoint an Adult Public Guardian as a "guardian of person" if there are no family members to help.

- Referrals are received from hospitals and nursing homes that are filing for guardianship.
- APS may also work with a County Attorney to file a petition for guardianship – this is only considered as a last resort to protect a client's well being if all other less restrictive interventions have been explored.

Press ALT to show or hide meeting controls

AutoSave Lunch & Learn Presentation - May 2023 - Saved to this PC Search (Alt+Q) Kamara, Yarrri E. Record Share

File Home Insert Draw Design Transitions Animations Slide Show Record Review View Help

Clipboard Slides Font Paragraph Drawing Editing

UPDATES AVAILABLE Updates for Office are ready to be installed, but first we need to close some apps. Update now

Social Services to Adults (SSTA)

The SSTA Program offers Case Management services that can assist with linkage to community resources, development of a service plan to reach agreed upon goals, monitoring of goal progress and face to face contact on a regular basis. The program seeks to build, sustain and enhance, rather than to replace the adult's family and community support systems.

The Social Services to Adults (SSTA) program provides services to enable and assist adults to:

- Achieve or maintain self-sufficiency;
- Prevent or avoid abuse, neglect, or exploitation;
- Prevent or reduce unnecessary or inappropriate institutionalization; and
- Secure necessary and appropriate institutional care services.

SSTA targets service delivery resources to those clients most in need.

- There is currently a Waiting List for services based on the individual's severity of need.

Slide 7 of 11 Accessibility: Investigate

AutoSave Lunch & Learn Presentation - May 2023 - Saved to this PC Search (Alt+Q) Kamara, Yarrri E. Record Share

File Home Insert Draw Design Transitions Animations Slide Show Record Review View Help

Clipboard Slides Font Paragraph Drawing Editing

UPDATES AVAILABLE Updates for Office are ready to be installed, but first we need to close some apps. Update now

In Home Aide Services (IHAS)

In-Home Aides serve adults 18 or older with functional disabilities who need assistance with activities of daily living in their home, vulnerable adults with no caregiver, those at risk of institutional placement, and those at risk of abuse or neglect.

Clients receiving IHAS also receive case management through the SSTA Program.

Services provided by In-Home Aides:

- Personal care (bathing, grooming, dressing)
- Transportation/escort
- Training in self-care and care-giving skills
- Minor household chores

To be eligible, individuals must have a functional disability and cannot have more than \$19,999 in liquid assets (\$22,999 for couples). Individuals may have to pay a sliding scale fee based on monthly income.

Slide 8 of 11 Accessibility: Investigate

AutoSave Lunch & Learn Presentation - May 2023 - Saved to this PC Search (Alt+Q) Kamara, Yarrri E. Record Share

File Home Insert Draw Design Transitions Animations Slide Show Record Review View Help

Clipboard Slides Font Paragraph Drawing Editing

UPDATES AVAILABLE Updates for Office are ready to be installed, but first we need to close some apps. Update now

Senior Care

The Senior Care Program provides state funding for services for people 65 or older who may be at risk of nursing home placement. The program allows seniors to live with dignity and in the comfort of their own homes and at a lower cost than nursing facility care. Clients receiving Senior Care also receive case management through the SSTA Program.

Services provided through Senior Care:

- Personal Care
- Chore Service
- Medication Reimbursement
- Purchase of Medical Supplies
- Adult Day Care
- Home Delivered Meals
- Transportation to Medical Appointments
- Emergency Response Systems

Eligibility:	Individuals	Couples
Max Monthly Income:	\$3,121	\$4,081
Max Liquid Assets:	\$11,000	\$14,000

Slide 9 of 11 Accessibility: Investigate

AutoSave Lunch & Learn Presentation - May 2023 - Saved to this PC Search (Alt+Q) Kamara, Yarrri E. Record Share

File Home Insert Draw Design Transitions Animations Slide Show Record Review View Help

Clipboard Slides Font Paragraph Drawing Editing

UPDATES AVAILABLE Updates for Office are ready to be installed, but first we need to close some apps. Update now

Project Home

Project Home is a program that provides housing to adults who need supervision and assistance with activities of daily living and who are unable to live by themselves.

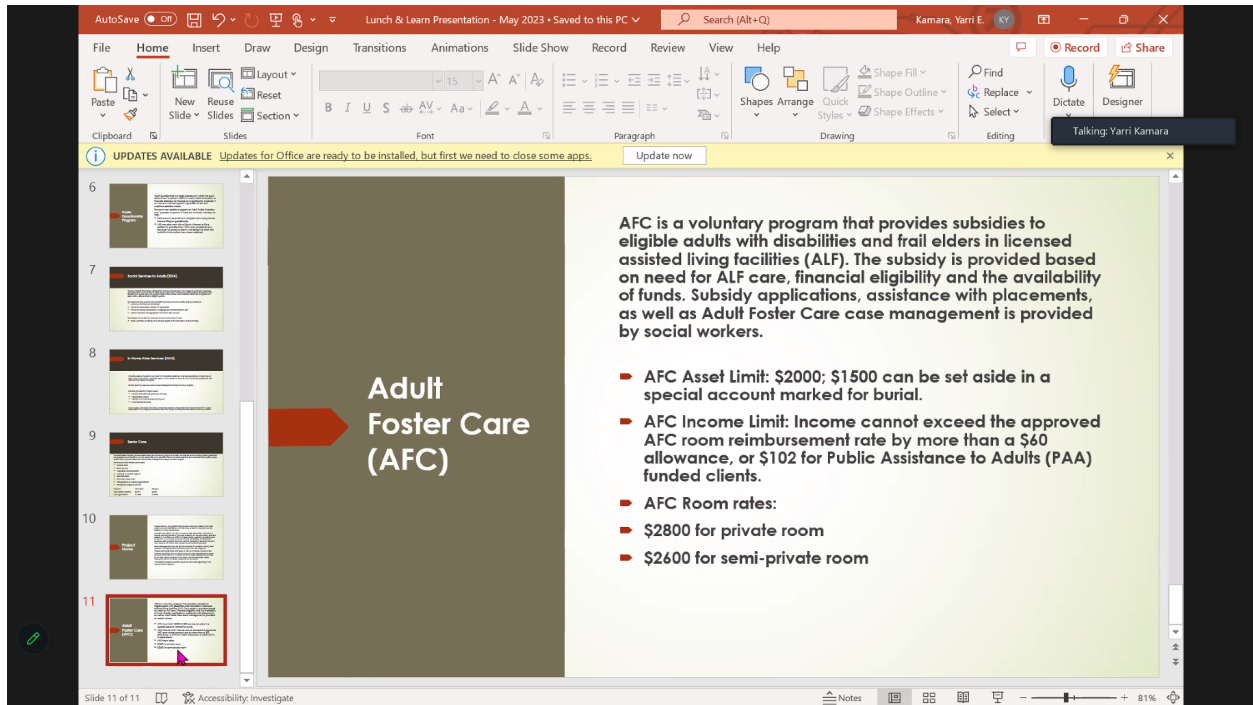
Residents are adults who are 18 years of age and older, who have a mental, developmental or physical disability or who are elderly and are unable to live alone. To enroll in Project Home, potential residents must be able to live in a family setting; to take advantage of community resources and program activities; and to maintain or develop the skills they need to live in the least restrictive environment possible.

Case management services are also offered to residents linking each resident with appropriate community activities and supports.

Project Home providers offer care in their own homes to one to four residents and they must be certified by the local department of social services. Certification will include a home study, background checks for all other adults residing in the home, an environmental safety inspection and a fire safety inspection of the home.

*Montgomery County currently does not have any openings in the Project Home Program.

Slide 10 of 11 Accessibility: Investigate



Arquilla – is there a component that provides for social life?

Yarri – there are some portions for that. There is a senior newsletter that goes out electronically and you need access to sign up for that and it lists activities going on throughout the community. There are programs for shuttles, the friendly visitor program. There's also a pet visiting program as well for pet therapy or a pet for companionship, they'll come and visit with dogs and cats at someone's home. There's lots of opportunities for socialization at the villages at well, and you can use the village finder app from the county.

Arquilla – Is there still a free federal phone program for seniors?

Yarri – it's not provided by us but we can help people getting access to that. We can help people fill out the forms and know about the resources.

Arquilla – are there programs to assist with computer access or use?

Yarri – there are computer classes and computer based organizations that provide classes for a low price. The county was having the chrome books that they were providing as well.

Dianne Whitaker MCPL – the public libraries all have computer access and can take appointments for people to come in and use Chrome books.

Arquilla – what age is considered seniors?

Yarri – Typically age 62 for a lot of the programs, especially with senior housing.

Arquilla – how does medicare play into it? I'm aware that when someone started working again they had their social security check cut.

Yarri – sometimes when you're getting Medicaid and receiving social security there's a limit to how much money you can earn, so folks opt not to work if they're on social security and some kind of public assistance.

8:15 p.m.

Community Concerns Community members Objective: Opportunity for public comments

Debra – the trucks in Glenmont shopping center are back – is there anything that can be done to stop them?

Luisa – the county has been fining the property owners, as they're supposed to have them towed, and some of the property owners have been renting the spaces to truckers. The only effective enforcement action is when a police officer is specifically assigned to that area for a month. A developer is very close to buying all of the properties at Glenmont, they're closer to finalizing a deal than anyone has ever been. The county is paying very close attention to this. There's also a peace event planned for before school in the Glenmont shopping center, and the gang prevention unit is putting out events all over the county for that purpose.

Debra – could we hear from the State's attorney to hear about the enforcement of youth and gangs issues and what the prosecutors for the county are up against.

Luisa – I believe that's on a list of topics you all have spoken about.

8:23 New Business - Board Elections

- Chamber Nominations

Objective: Discuss elections for Chair and Vice Chair and nominations for the chamber awards.

Luisa - You can renew the Chair, Vice Chair and Secretary positions or put in new folks. Krista is the new project development coordinator for the gateway project. I'm not sure if she's here here.

Chamber Nominations -

Nominations for Resident of the year and Association, a Civic Association or non-profit that's made a significant contribution to the mid-county area. This can include religious entities.

Serge – I would nominate Oak Chapel United Methodist Church, despite the budget change they still are dedicated to helping and serving the community.

Nomination for Chair (Tameka, Arquilla) Vice Chair (Rob Fox)

Invite coming for MCCAB/WUDAC joint meeting in September on drone issues

Also need to do the new budget letter soon, and that will come out in e-mail to the group soon.

8:41 p.m.

Adjourn Aquilla Ridgell, Chair
Objective: Close out meeting

Zoom Chat Transcript

19:27:03 From Tameka Nicholson to Everyone:
Great information. Thanks Luisa.

19:40:58 From Aggie Alvez (she, her) to Everyone:
alvezagg@gmail.com

19:41:45 From Luisa Cardona to Everyone:
Below is a PDF based on a picture that police sent

19:41:56 From Luisa Cardona to Everyone:
on the drone program

19:42:29 From Luisa Cardona to Everyone:
Here is the model

19:42:32 From Luisa Cardona to Everyone:
<https://www.chulavistaca.gov/departments/police-department/programs/uas-drone-program>

20:03:41 From Dianne Whitaker-MCPL to Everyone:
REC Dept., Senior Centers, Montgomery Parks all have programs for social opportunities. For more able seniors - Village program exists in certain neighborhoods.

20:06:55 From Dianne Whitaker-MCPL to Everyone:
Senior Planet and Mont. Co. Computer for You is still occurring.

20:14:56 From Serge Thomas to Everyone:
Thanks!

20:15:28 From Tameka Nicholson to Everyone:
Great information Yarri. Thank you.

20:23:02 From Yarri Kamara to Everyone:
Thank you for having me this evening, I'm going to exit this meeting.

20:23:37 From Serge Thomas to Everyone:
Thank You Ms. Kamara!

20:26:07 From Luisa Cardona to Everyone:
Outstanding Resident of the Year
Recognizes a resident who has made an outstanding contribution to their community or larger MidĠCounty area.

20:26:20 From Luisa Cardona to Everyone:
Outstanding Association of the Year
Recognizes a civic group or nonprofit that has made a significant achievement to their community in MidĠCounty.