

MCCAB 12/16/2021

Agenda Accepted

Prior Meeting Notes Accepted

Bikeways Program Presentation

Patricia Shephard

MCDOT vision – seamless transportation system for people of all ages, safe and accessible and low stress

Description of higher stress and lower stress facilities – shared lane, bike lane, buffered bike lane, separated bike lane, and shared use paths

Various ways to implement – Standalone capital improvement projects, BiPPA, Facility planning phases 1 & II, bikeways program, minor projects, traffic improvements, highway maintenance/resurfacing, other agencies/participation projects, developer required projects

2018 to 2019 budget increased from 530k to 1.5m, developing Emory lane shared use path, Dr bird shared use path,

Clopper road shared use path

Nebel st. separated bike lanes

Glenbrook road/little falls pkwy

Bikeways projects examples

Spring street protected bike lane

Executive drive road diet bike lanes, lanes narrowed to 10 feet, no center lane, protected bike lanes installed

Neighborhood greenways – shared streets is an example

Shared use path project in Olney under construction, 1600 linear feet a missing link between ICC and North Branch hiker biker trail – roadway has a sharp berm with no space for pedestrians or cyclists

Muncaster mill will also have a shared use path, 1550 linear feet, 10 feet wide

BiPPA program areas – Grovesnor, Wheaton, Glenmont, Randolph, Silver Spring

Wheaton BiPPA program – Wheaton CBD, enhance safe bicycle and pedestrian access, connections, and facilities, spot improvements, bicycle master plan & Wheaton CBD and vicinity sector plan

Amherst bikeway – Windham to Arcola on Design completed 7/2021, Final design kickoff in late 2021

Amherst bikeway – two way cycle track, side by side, 8 feet with 3 foot buffer, 10.5' travel lanes with 8' parking lanes, try really hard to minimize impacts, public engagement is very important, in all their designs try to make as many people happy as possible, there are tradeoffs

Additional amenities and support for the bikeways program – wayside 1 and II and BTT landing

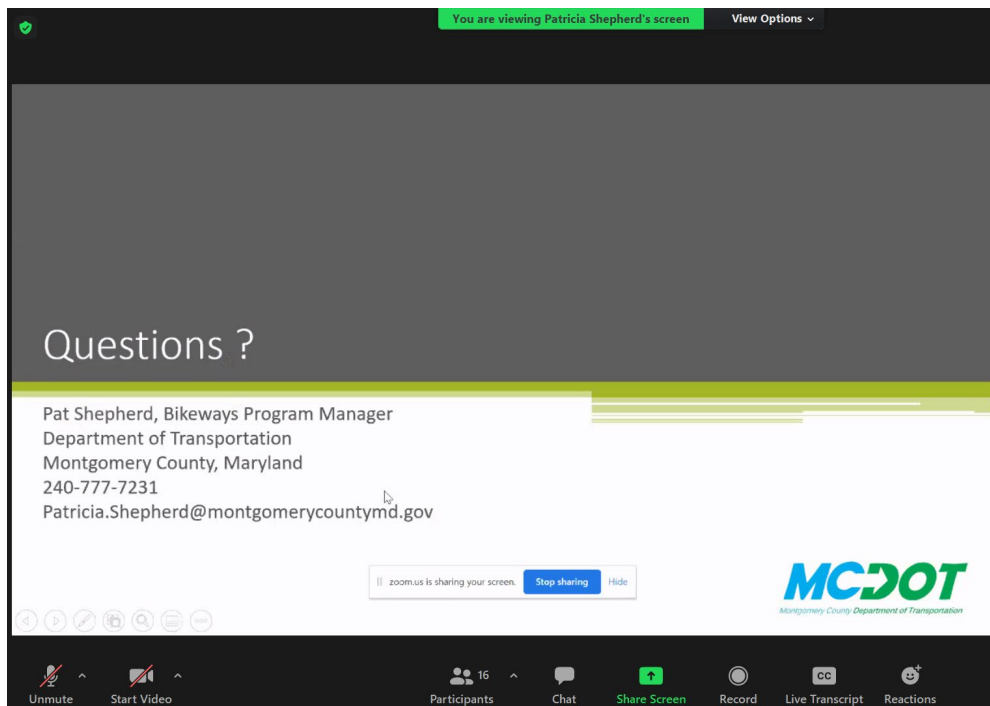
Bike wayfinding signage

Bike racks

Wayside amenity area

Bike maps

New Olney bike store



Education for motorists for how to react to cyclists and pedestrians?
There are brochures out for how to understand these new pavement markings
Contract with WABA for some of those educational classes

Questions

Serge – Asked about a neighborhood greenway shared street for his neighborhood.

The response is that it is planned to be permanent, but more formal traffic calming measures will be something that requires community engagement – if you live there you have access, but it's not meant for through traffic

Rob Fox:

Can we adjust the traffic calming measures on Plyers mill West of GA to allow cyclists to pass through?

She will talk to the MDOT folks about those traffic calming measures

Revisit the bike routes designations, as some of them seem like they are out of date as far as ideal routes to take or when taking difficulty of riding into account

She and Rob Fox will e-mail about the bike routes for identifying those that could be reworked

Gary Fellman – there's a lack of secure bicycle parking in areas and that makes it hard to commute to work or stores

They're working to get bike lanes installed, and want to identify those areas that are of particular need, and knowing places are of high usage means they can order more or request additional funding for future years in the CIP program – bike rack spotter program/app can point out bike racks that are in place

The Bicycle Action Committee has a meeting once a month on the third Thursday

County CAP

Adriana Hochberg

Aiming for an 80% emissions reduction by 2027, we've reduced 19% since we started measuring in 2005, and reach 100% reduction by 2035

Drought risk will go up

High heat days will go up

Extreme precipitation and precipitation totals go up

Increase in high wind events

Climate change is already impacting us – it's hotter and wetter

Path for reaching the 2035 goal

Reduce emissions in buildings

Center racial equity and social justice

Address residual emissions and carbon sequestration

Identify resources to pay for climate action

Enhance climate governance

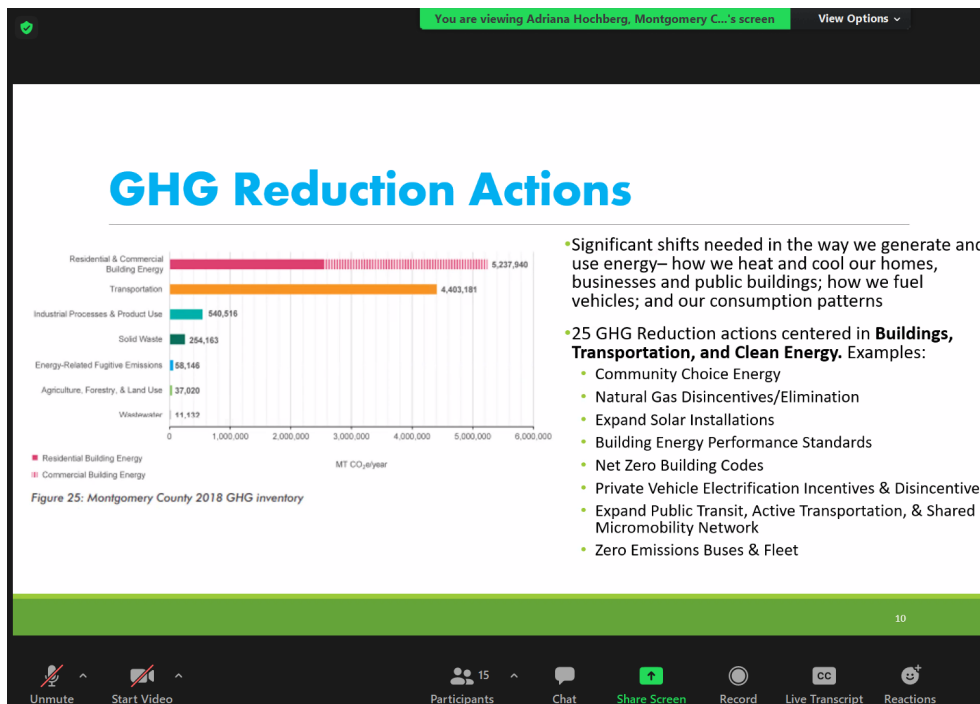
Engage the community as partners in climate action

Take the next steps

Two companion report

CAP

And Climate work plan – 75 or 86 CAP actions are moving forward in FY2022



You are viewing Adriana Hochberg, Montgomery C... 's screen View Options

Climate Adaptation & Sequestration Actions

- The Plan identifies 6 **nature-based carbon sequestration** actions, including:
 - Retaining and increasing forests
 - Retaining and increasing tree canopy
 - Regenerative agriculture
 - Increasing carbon in soils through improved agricultural practices
- The 20 **climate adaptation** actions include:
 - Water infrastructure resilience & water supply protection
 - Resilience hubs
 - Updating green streetscape and green infrastructure standards
 - On-site water reuse
 - Update floodplain maps

11

Unmute Start Video Participants 15 Chat Share Screen Record Live Transcript Reactions

You are viewing Adriana Hochberg, Montgomery C... 's screen View Options

Governance, Public Engagement and Personal Actions

- 16 **Climate Governance** Actions, incl.:
 - Climate Change Academy
 - Incorporating climate competencies into MCG job descriptions
 - Incorporate climate considerations into the budgeting processes
 - Develop climate financing strategies
 - Develop climate equity metrics
 - Consolidate County climate data
 - Conduct climate vulnerability detailed assessments
- 19 **Public Engagement** Actions, incl:
 - Forming a climate change communications coalition
 - Establishing a community justice academy
 - Establishing statewide climate coalition of local governments
- The CAP calls for both system-level changes and **personal actions**, including:
 - Actions to lower carbon footprint
 - Actions to reduce home electricity usage
 - Actions to lower electricity use in businesses
 - Actions to increase climate resilience

12

Unmute Start Video Participants 15 Chat Share Screen Record Live Transcript Reactions

Conduct vulnerability assessments with the emergency services department, there are 19 public engagement actions
 Work with communities that are left out of discussions and co-creating programs that meet their specific needs

You are viewing Adriana Hochberg, Montgomery C... 's screen View Options

Key actions are already underway

- **Building Energy Performance Standards** – bill transmitted to Council April 2021, undergoing Council review
- **2018 International Green Construction Code** – Executive regulations transmitted to Council March 2021 – passed October 2021
- **Transportation Demand Management** – Executive regulations being finalized
- **Community Choice Energy** authorized by General Assembly; Public Service Commission regulatory workgroup kicked-off Sept. 2021
- **Additional legislation** being drafted, incl. authorizing Green Bank resilience activity, Commercial Property Assessed Clean Energy expansion, gas-powered leaf blower ban



13

Unmute Start Video Participants 15 Chat Share Screen Record Live Transcript Reactions

You are viewing Adriana Hochberg, Montgomery C... 's screen View Options

Additional FY22 Climate Actions Include

Community Justice Academy	Montgomery College building submetering
Climate budgeting	County fleet transition study
Sustainable Economic Development analysis	Project equity (worker-owned co-ops)
Agrivoltaic study project	Climate stories project
Electric Vehicle Purchasing Coop	BEPS implementation technical study
EV Wayfinding Signage	EV charging installations in public properties
Brookville Bus Depot microgrid installation	Scotland resilience hub
EV police cruisers pilot	Expand RainScapes
Electric bus procurements for MCPS & Ride On	• See FY22 Work Plan for full list of near-term actions

14

Unmute Start Video Participants 15 Chat Share Screen Record Live Transcript Reactions

An electric vehicle purchasing coop

You are viewing Adriana Hochberg, Montgomery C... 's screen View Options

Key Takeaways

- Significant effort will be necessary to meet the County's climate goals.
- Public and private resources must be leveraged to implement solutions.
- Climate action is already underway, including legislation & regulations pending before Council
- The climate action implementation phase must center racial equity and social justice considerations in order to ensure equitable outcomes
- Different/new governance and community engagement approaches will be necessary to be more inclusive of all voices.

15

Unmute Start Video Participants 15 Chat Share Screen Record Live Transcript Reactions

Questions

Arquilla – for blacktop, is there any way or are our road able to be made more green or less hot and heat island generating?

Adriana – we're interested in that urban heat island effect, we don't have hard data for urbanized area temperatures vs other areas with more greenery, not sure about what can be done to cool down the asphalt itself to cool down the asphalt

Arquilla – is there anything we've found for different types of materials that could let them be less hot?

Stan Edwards – that research is probably being done, but we don't know off the top of our heads, we can follow-up on that and get back to you

Susanna – concrete roadways end up being louder and harder to repair, and it doesn't last as well as asphalt

Rob Fox

At one of the Wheaton town square events would it be possible to showcase some of the electric bus fleet that already exists as a means to show off the technology and how it would make the depot quieter and less smoggy?

Stan – yes interested in trying to do this, including having buses for shuttles in
For Community Choice energy will the materials mailed out for that look like something from the county, since a lot of paperwork that comes to homes along those lines can seem scammy or too good to be true

Stan – That's something they're very concerned with and doing a lot of work on the marketing they'll do for the program.

Gary Fellman – in the UK they've tried community choice programs and they've had losses so you might look at them over there to see what's happened with those

Also, what's the Scotland community hub?

Adriana – turning the Scotland community center into a resiliency hub, access the community center and charge phones and what not

County council reports

None available

WUDAC Report

Chamber of commerce- holiday mixer, holiday toy drive, gubernatorial breakfast with candidates

Lt bunge report - violent crime up, partially due to the pandemic, property crime decrease, 4th district staffing issues, 22 down moving to 30 down. Not sure about increase in violent crime relative to stranger vs acquaintance crime - concerns about juvenile crime at Wheaton mall,

Concerns about crime in Wheaton from Omar Lazo
Challenges with hiring more officers long standing

Wheaton Urban district manager
Acquisition of new municipal building and veterans park
Upcoming events – winter events? Taste of Wheaton

There are 9 clean team members, 469 trash containers picked up weekly, 184.5k in landscaping
10 safe team members, 103 inquiries per week, bimonthly lighting surveys for urban district

FY2023

Replace some old benches and tables

Streeter support

Beautification and placemaking projects

Checker tables getting put in

Wheaton mall is installing chess and checkerboard tables as well

People can use the plaza without needing permits or permission

She is actively seeking ideas from WUDAC and the community for what we want

Art and Walkability project, from 1/3 to 1/31 is seeking out Maryland artists – you can find more information online

Community participation and abuse by community members was discussed – possibility of getting a facilitator was raised

Community Concerns

Greg Golden, lone community member, had none

New Business

Rob Fox: Question about if there's anything that can be done to facilitate improved medical services in the mid-county, as Holy Cross Hospital's wait times for the emergency room are very long.

Responses: There are other hospitals to go to preferentially, there are also urgent care facilities to go to preferentially, and that's outside of MCCAB's purview as it's a private institution.

Gary Fellman: Question about why the Wheaton parking garages are having fees induced on Saturdays but other garages in Silver Spring aren't. That doesn't seem fair.

Responses: That is a question that can be addressed to the county as they determine the parking rates. We can have someone explain that or come speak to us on it.