

Montgomery County Government



OPEN DATA OPERATIONS MANUAL

FY2026 Annual Update



Technology Enterprise Business Solutions
Montgomery County Government, MD

<https://data.montgomerycountymd.gov>

Table of Contents

Change Log	3
dataMontgomery – Fiscal Year in Review	4
1.0 Introduction	5
1.1 About dataMontgomery	5
1.2 Scope	5
2.0 Policy Requirements	6
2.1 The Montgomery County Open Data Act	6
3.0 Dataset Inventory and Publishing Schedule	7
3.1 dataMontgomery Fiscal Year 2025 Achievements	7
3.1.1 Dataset Publication in Fiscal Year 2025	7
3.1.2 Open Data Initiative – Outreach	8
3.1.3 Open Data Initiative – Student Partnership Program	8
3.1.4 Open Data Initiative – CountyStat Performance Dashboard Update	11
3.1.5 Open Data Initiative - Vision Zero	11
3.1.6 Open Data Initiative – Community Policing Bill Data (Bill 45-20)	12
3.2 dataMontgomery Fiscal Year 2026 Plan	14
3.2.1 Dataset Publication in Fiscal Year 2026	14
3.3 dataMontgomery Inventory for FY27 and Beyond	15
4.0 How Did We Establish Our Plan?	16
4.1 Dataset Inventory Update Process	16
4.2 Establishing the Publishing Priority for Datasets	16
4.3 Revisions to Datasets and Priority Groupings	17
4.4 Policy for Dataset Changes or Removal	17
4.5 Data Privacy	18
4.6 Open Data Project Governance and Staffing	18
4.7 dataMontgomery Website Availability and Bandwidth	19
Appendix A: Published Datasets	20
Appendix B: Initial Dataset Inventory Process	60
Appendix C: dataMontgomery Inventory for Fiscal Year 2026	62
Appendix D: dataMontgomery Inventory for FY27 and Beyond	65
Appendix E: Datasets Currently Unpublishable	72
Appendix F: Dataset Count by Department and Prioritization	80
Appendix G: openMontgomery Memorandum from CAO	82
Appendix H: Dataset Scoring Methodology and Outreach	84
Appendix I: MPIA Response Publishing	86

Change Log

Version	Date	Description	Author
1.0	9/18/2014	Initial Release	Department of Technology Services, Montgomery County Government
2.0	7/15/2015	Annual Update	Department of Technology Services, Montgomery County Government
3.0	7/15/2016	Annual Update	Department of Technology Services, Montgomery County Government
3.5	4/07/2017	Modification to Section 10.5.2	Department of Technology Services, Montgomery County Government
4.0	7/15/2017	Annual Update	Department of Technology Services, Montgomery County Government
5.0	7/15/2018	Annual Update	Department of Technology Services, Montgomery County Government
6.0	7/15/2019	Annual Update	Department of Technology Services, Montgomery County Government
7.0	7/15/2020	Annual Update	Department of Technology Services, Montgomery County Government
8.0	7/15/2021	Annual Update	Department of Technology Enterprise Business Solutions, Montgomery County Government
9.0	7/15/2022	Annual Update	Department of Technology Enterprise Business Solutions, Montgomery County Government
10	7/15/2023	Annual Update	Department of Technology Enterprise Business Solutions, Montgomery County Government
11	7/15/2024	Annual Update	Department of Technology Enterprise Business Solutions, Montgomery County Government
12	7/15/2025	Annual Update	Department of Technology Enterprise Business Solutions, Montgomery County Government

dataMontgomery – Fiscal Year in Review

dataMontgomery is a program committed to providing Montgomery County's public data in an open and accessible format. Over the last 12 months, the dataMontgomery team has made significant progress in publishing data and has conducted outreach to encourage the internal and community use of data. Since the program's inception, public data from every county department in the Executive Branch has been published.

Highlights from this past year include:

Dataset Publishing:

- Publishing 36 datasets, including data about Office of Consumer Protection Investigations Data, Automated School Bus Camera Violations, DOT CIP Road Construction Projects, and Police Trespass Contract.
- Conducting an annual, prioritized update of datasets available Countywide and compiling a publishing schedule for the upcoming fiscal year
- Ensuring previously published datasets are kept up to date by adding new fields and regularly refreshing the data based on the specified update frequency.

Advocating for Government Transparency:

- Promoting open data best practices nationwide
- Advocating for statewide transparency through the Maryland Open Data Council

Promoting Open Data Utilization:

- Offering training sessions for employees to understand how open data can benefit county work.
- Assisting departments in identifying methods to leverage open data.
- Partnering with local colleges to apply new skill sets and provide new perspectives.

In the upcoming year, we will continue working to publish public data using plain language, update it in a timely manner, and provide residents with better access to government information to help them live and thrive in Montgomery County.

We want to express our gratitude to our departments for their dedicated work in making public data available on dataMontgomery. We also want to thank the public for their valuable contributions in helping us understand how to address your inquiries better using data.

1.0 Introduction

1.1 About dataMontgomery

A responsive and accountable County Government has long been among the County's highest priorities. In 2012, Montgomery County announced the "openMontgomery" initiative. The goals of this initiative were spelled out in the Montgomery County Open Data Act (see Montgomery County Code §§ 2-152 – 159). As a result, the dataMontgomery website was launched as the County's single comprehensive source of data, supporting a path to even greater transparency, accessibility, and efficiency.

The dataMontgomery program provides residents, businesses, and the press with direct access to County datasets in consumable formats so they may be viewed, sorted, and used in various ways, including potentially being leveraged in developing new applications and services by interested parties. Providing this information allows the public to review and analyze raw data.

Link to the openMontgomery web portal: <http://www.montgomerycountymd.gov/open/>

Link to the dataMontgomery website: <https://data.montgomerycountymd.gov/>

Information about the project, including project staffing and governance, is included in Section 4.

1.2 Scope

Montgomery County has already made many high-value datasets available through the dataMontgomery website (<https://data.montgomerycountymd.gov/>). The Montgomery County Government Open Data Operations Manual will document additional county datasets not yet available on the dataMontgomery webpage but will be published in the future.

The Operations Manual has been created to comply with the Open Data Act. It aims to provide a complete list of public datasets maintained by the Montgomery County Government and a commitment to make these datasets publicly available by the specified publication dates.

This Operations Manual is accessible on the Montgomery County website and will be updated annually no later than July 15th.

2.0 Policy Requirements

2.1 The Montgomery County Open Data Act

The Montgomery County Open Data Act, codified in Sections 2-152 to 2-159 of the Montgomery County Code, sets several requirements for an Open Data Implementation Plan. As detailed in Montgomery County Code Section 2-158(a), the plan must:

- Include a summary description of a public dataset under the control of each agency when or after the bill takes effect.
- Prioritize the public datasets for inclusion on the single web portal on or before December 31, 2018, under the standards adopted by the County; and
- Create a timeline for the inclusion on the single web portal.

The Open Data Implementation Plan must be updated annually by July 15 until all public datasets to be published are made available through a single web portal. (See Montgomery County Code § 2-158(c).)

Additionally, the Open Data Act has a provision that covers Public Information Act Responses. (See Montgomery County Code § 2-159.) The provision requires this Open Data Implementation Plan to document which data elements will be made available on the web portal for each Maryland Public Information Act request and provide a schedule for implementation.

In accordance with the Open Data Act, the Open Data Implementation Plan specifies the following requirements.

- “The list of public datasets will be described and maintained in the Operations Manual.” See COMCOR 2.152.01.04(b).
- “A dataset publication timeline will be published in the Operations Manual, based on budgeted resources.” See COMCOR 2.152.01.04(d).
- “The Director will publish and maintain policy and process details for MPIA Publishing in the Operations Manual.” See COMCOR 2.152.01.08(c).
- “On July 15, 2015, and every July 15 thereafter, the Director will publish an update to the Open Data Operations Manual on the Open Data web portal.” See COMCOR 2.152.01.09(a).

3.0 Dataset Inventory and Publishing Schedule

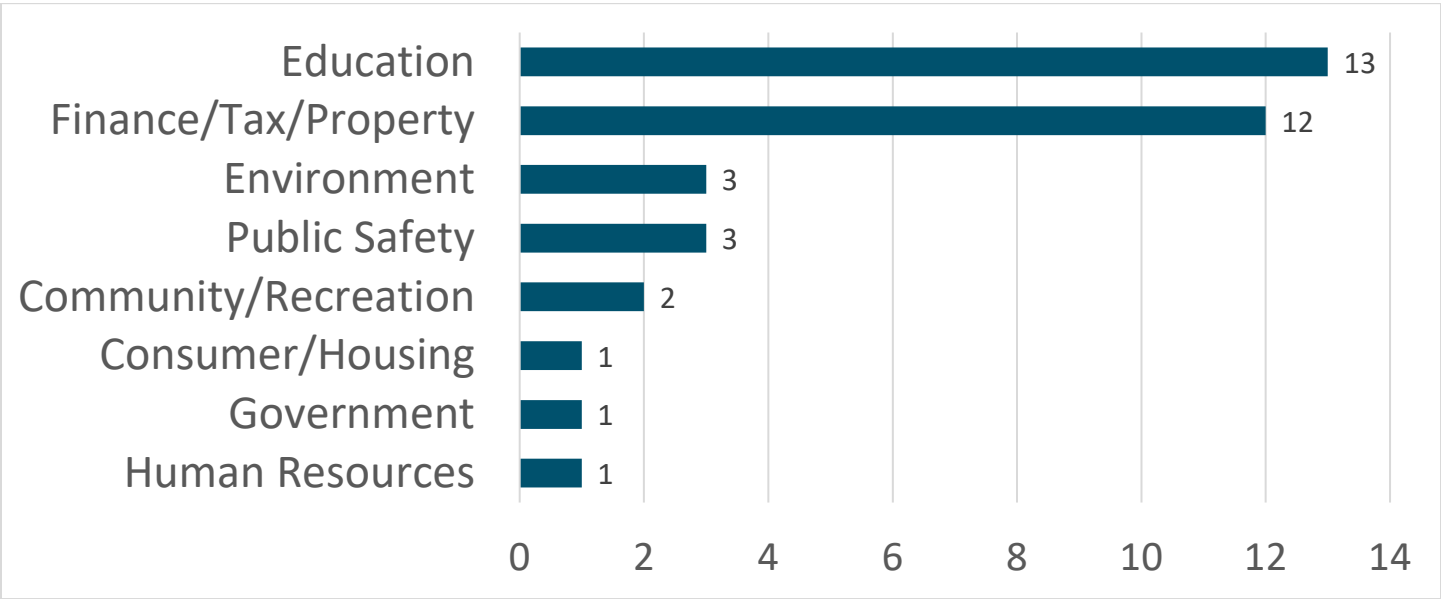
3.1 dataMontgomery Fiscal Year 2025 Achievements

In the Fiscal Year 2025 (July 1, 2024, through June 30, 2025), our team published and maintained numerous datasets, explored internal uses of open data, and conducted outreach activities.

The following sections provide details about the datasets published on the dataMontgomery website and several additional Open Data Initiatives completed in FY25.

3.1.1 Dataset Publication in Fiscal Year 2025

The dataMontgomery team's FY25 work plan led to the publication of 36 datasets, many of which have high priority rankings.



Additionally, several more datasets are nearing publication and are expected to be released in early FY26. Any unpublishable or duplicate datasets are listed separately in [Appendix E: Datasets Currently Unpublishable](#).

Please refer to Sections [4.1](#) to [4.4](#) of this document for more information on the dataset inventory process and the prioritization of datasets, including priority grouping.

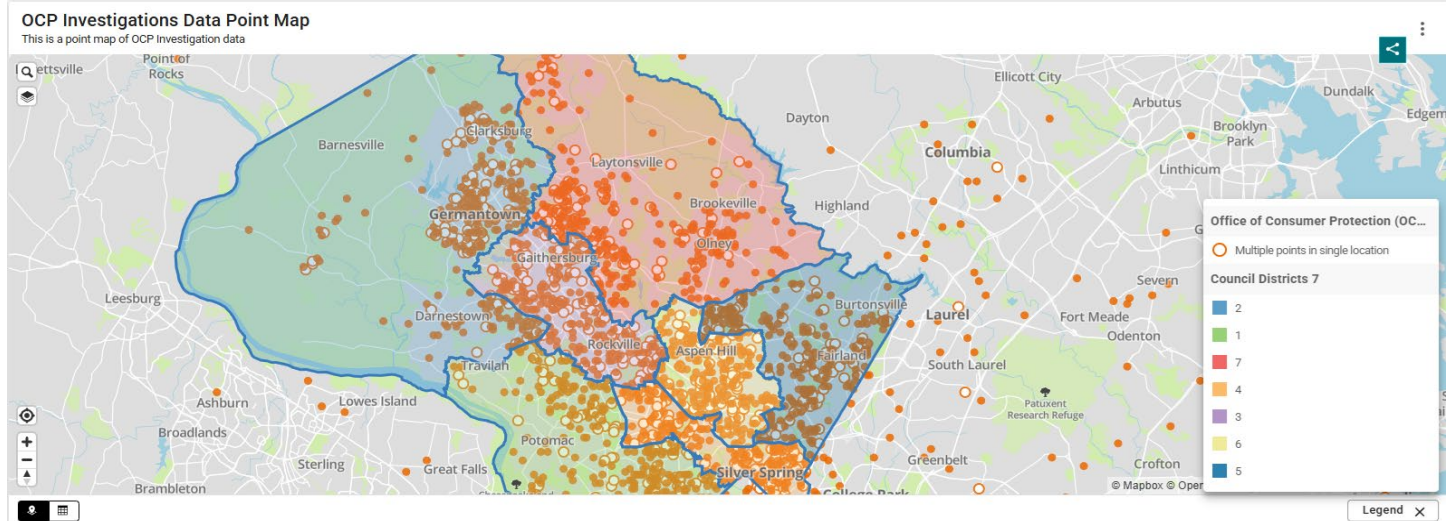
The number of datasets scheduled to be published in FY25 was calculated based on each dataset's estimated relative complexity (effort to publish), considering other dataMontgomery initiatives and the allocated resources for dataMontgomery efforts.

Highlights Include:

- [Office of Consumer Protection \(OCP\) Investigations Data](#)
- [Automated School Bus Camera Violations](#)
- [CIP Road Construction Projects](#)
- [Trespass Contracts](#)
- [LIB - Total Public Service Hours by Branch Libraries](#)

The complete list of datasets published is detailed in [Appendix A: Published Datasets](#) and provided [here](#) in a searchable, consumable format.

Figure 1: Office of Consumer Protection Investigations Data Map



3.1.2 Open Data Initiative – Outreach

We have been working hard to help residents become aware of the available data and dataMontgomery resources and to assist government peers in implementing open data best practices. Our efforts include:

Collaborating with Peer Governments:

- Speaking at local, regional, state, and national events to share Montgomery County's open data best practices and experiences.

Encouraging Internal Use:

- Providing in-person and virtual learning opportunities for employees.
- Showcase published datasets and encourage collaboration between departments.
- Distributing the dataMontgomery newsletter about dataset publishing/updating status to keep the departmental Point of Contact informed on the State of Maryland's open data activities.

Engaging Our Community:

- Promoting awareness of the dataMontgomery site through social media and community engagement.
- Distributing quarterly Open Data publishing news and highlights via the County Public Information Office's eSubscription channel to 3,600+ subscribers
- Assisting data-owning departments with outreach and rollout for identified datasets.
- Continued use of a dataMontgomery X account (@dataMontgomery) to communicate open data noteworthy events.
- Partnering with local colleges to apply new skillsets and provide new perspectives.
- Hosting rising MCPS juniors and seniors through the Summer RISE program to provide career-based learning experiences that expose them to workplace expectations, career paths, and essential professional and technical skills.

3.1.3 Open Data Initiative – Student Partnership Program

Montgomery County has developed collaborative partnerships with college programs (Montgomery College, the Universities at Shady Grove, and the University of Maryland at College Park) to encourage innovative ideas, creative thinking, and the development of support tools. Students are individuals and groups in both

undergraduate and graduate-level courses learning Data Science, Design Thinking, User Research, and Product Development.

Projects include:

- Office of Consumer Protection (OCP): Disparity and Analysis in Tows
- Office of Animal Services (OAS): Storytelling through Data Analytics
- Department of Police (POL): Cross-Referencing Dispatched Incidents, Crime, and Crash
- Department of Energy (DEP): AI-Powered Solar Panel Analysis & Deployment Feasibility
- Alcohol Beverage Services (ABS): Inventory Optimization

This partnership has been successful and mutually beneficial:

- Providing Montgomery County opportunities to build community engagement and access to an emerging talent pool while bringing innovation and experimentation to our workplace, and
- Gaining students' hands-on experience with real challenges, building their resumes, and diversifying their skills.

As we advance, Montgomery looks forward to more opportunities to work with local college students and address county challenges from a new perspective.

Figure 1: Office of Consumer Protection Apps - Disparity and Analysis in Tows

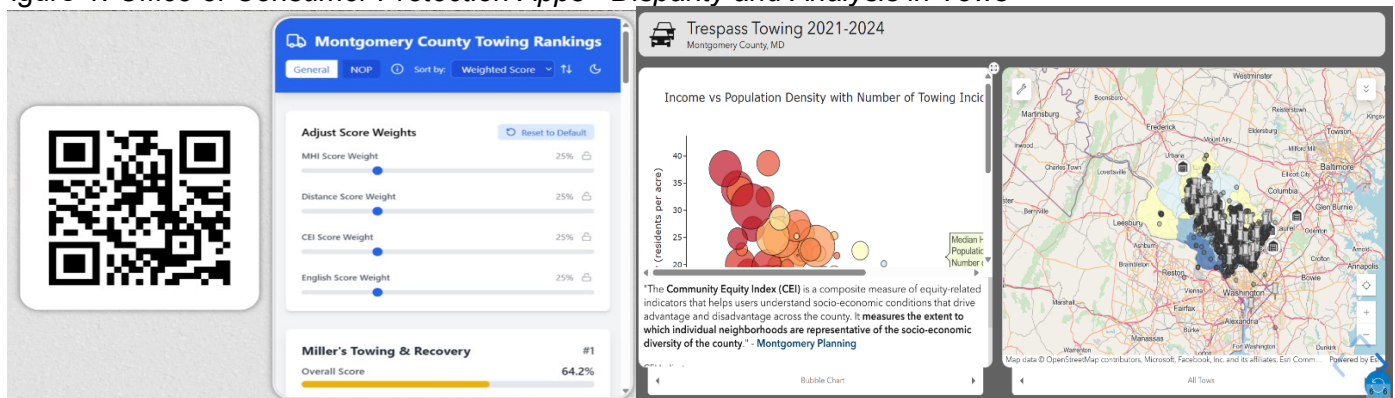


Figure 2: Office of Animal Services Dashboard - Storytelling through Data Analytics

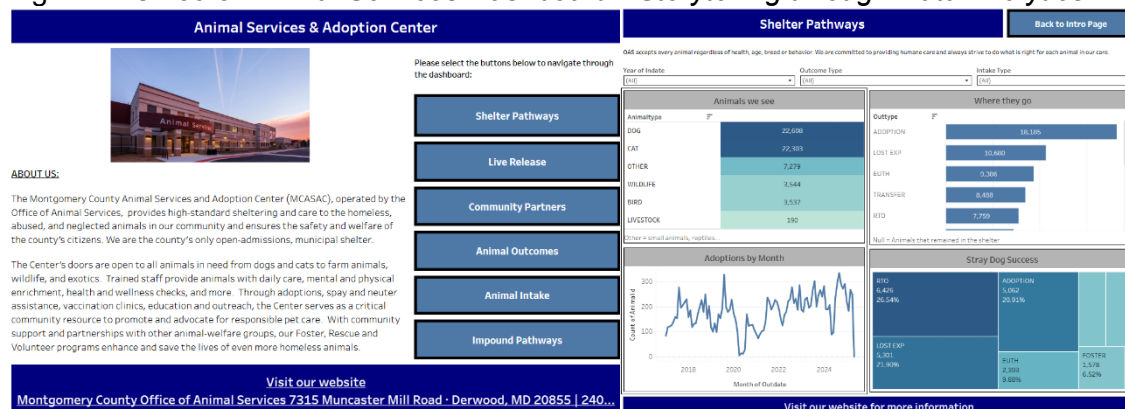


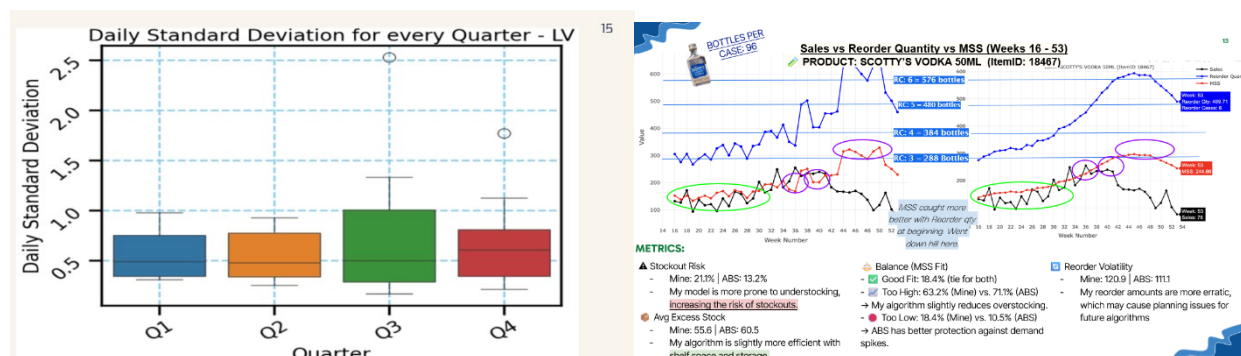
Figure 3: Department of Police: Cross-Referencing Dispatched Incidents, Crime, and Crash – Data Breakdown



Figure 4: Department of Energy (DEP): AI-Powered Solar Panel Analysis & Deployment Feasibility Model Training and Comparison – Model Training and Comparison



Figure 5: Alcohol Beverage Services (ABS): Inventory Optimization – Daily Standard Deviations and Sales vs Reorder Quantity vs MSS



3.1.4 Open Data Initiative – CountyStat Performance Dashboard Update

CountyStat is Montgomery County’s performance management and data analytics team. Established in 2007 under the Chief Administrative Officer (CAO) and subsequently moved to the Office of Management and Budget in 2020, CountyStat uses data strategically to monitor, assess, and improve the effectiveness, efficiency, and performance of County services, solve problems, and develop targeted action plans and strategies to deliver results for our residents, businesses, and communities. CountyStat requires decisions, actions, and policies that are driven by the extensive use of data, quantitative and qualitative analysis, and outcome-focused performance management.

As Montgomery County moves more data online through the dataMontgomery website, it is essential to support the County’s performance metrics to the extent possible using this published data rather than quarterly or annual summaries. The CountyStat website continues to feature in one place the entire set of interactive “data discovery” tools developed over the past five years, allowing residents, businesses and non-profits, academics, and County employees to tap into an enormous amount of data that can be used for planning, strategizing and generating insights about life in Montgomery County. This includes a “Community Explorer” that allows visitors to the site to delve into Census data to learn about the people who live in specific parts of the County.

The CountyStat site also adds new datasets to the ever-growing list available on dataMontgomery through the metrics publicly shared under the “Department Performance” section of the site. In FY25, CountyStat will be adding FY25 actual department performance data and projected numbers through FY27 to the site. CountyStat has realigned both new and existing department performance measures to the programs delineated in OMB’s Budget Book through a classification that assigns each measure to a category of work quantity and quality, effort, and effect: “How much did we do?” “How well did we do it?” and “Is anyone better off?”

Website	URL
CountyStat Website	https://www.montgomerycountymd.gov/countystat/main.html/

3.1.5 Open Data Initiative - Vision Zero

Vision Zero Montgomery County launched its Vision Zero Initiative in 2017 with the goal of eliminating serious and fatal traffic crashes by 2030.

On July 1, 2022, the County released its long-term 2030 Action Plan with 45 action items to guide the County in reaching its Vision Zero goal. At the launch of the Vision Zero Initiative, Montgomery County Police published crash and traffic violation data on dataMontgomery. The crash data has 72 unique fields for each collision, and the traffic violation dataset is one of dataMontgomery’s largest datasets, with over 2 million rows.

Since the initiative’s launch, additional datasets regarding traffic safety have been added and are listed below. During FY25, all three automated enforcement programs, [red-light](#), [speed](#), and [school bus](#) violations, were added to dataMontgomery.

Learn more about the County’s Vision Zero Initiative:

- [Vision Zero Homepage](#)
- [Vision Zero Action Plan](#)
- [Zero Deaths Maryland Fatal Crash Dashboard](#)

Vision Zero Open Datasets:

- [Crash Reports](#)
- [Officer Issued Traffic Violations](#)

- [Automated Red-Light Violations](#)
- [Automated Speed Enforcement Violations](#)
- [Automated School Bus Camera Violations](#)
- [Fire and Rescue \(FRS\) Child Car Seat Program](#)
- [Transportation Correspondence Log](#)

3.1.6 Open Data Initiative – Community Policing Bill Data (Bill 45-20)

In November 2021, the Montgomery County Council passed the Community Policing Bill, which requires the Montgomery County Police Department (MCPD) to make specific reports and datasets on dataMontgomery related to police-community interactions.

- Bill 45-20 would amend Section 35A-6 of the Code, which already contains various reporting requirements for the MCPD. Under the bill, MCPD would be required to report annually to the Council (among other data):
- Demographic information regarding individuals stopped (including a stop and frisk that does not result in a citation or arrest), searched, cited, arrested, or the subject of a use of force incident by the Department, including:
 - Race
 - Ethnicity
 - Gender
 - Any other demographic information voluntarily provided by the detainee

The bill also would require MCPD to post on dataMontgomery information, including about race and ethnicity, for each of the following types of incidents:

- Use of force incidents
- Field interview reports
- Juvenile citations
- Criminal citations, including trespassing citations
- Alcohol beverage violations
- Possession of marijuana violations less than 10 grams
- Smoking marijuana in public places
- Police weapon pointing
- Stay-Away orders
- Search warrants
- Arrests
- Service calls for mental health
- Service calls for substance abuse
- Service Calls deemed unfounded
- Swat
- Search Incident to arrest
- Consent searches
- Any other interactions with the public for which MCPD maintains an internal dataset.

In compliance with this legislation, 83% of the Bill 45-20 datasets are now publicly available:

- [POL- Use of Force Overview](#)
- [Police Field Interviews](#)
- [Police Juvenile Citations](#)
- [Police Criminal Citations](#)

- [Alcoholic Beverage License Violations](#)
- [Police Marijuana Possession Violations](#)
- [Police Marijuana Smoking Violations](#)
- [Police Weapon Pointing](#)
- [Police Stay-Away Trespass Orders](#)
- [Police Search Warrants](#)
- [Police Arrests](#)
- [Police Service Calls for Mental Health](#)
- [Police Service Calls for Substance Abuse](#)
- [Police Service Calls for the Homeless](#)
- [Police Service Calls Deemed Unfounded](#)

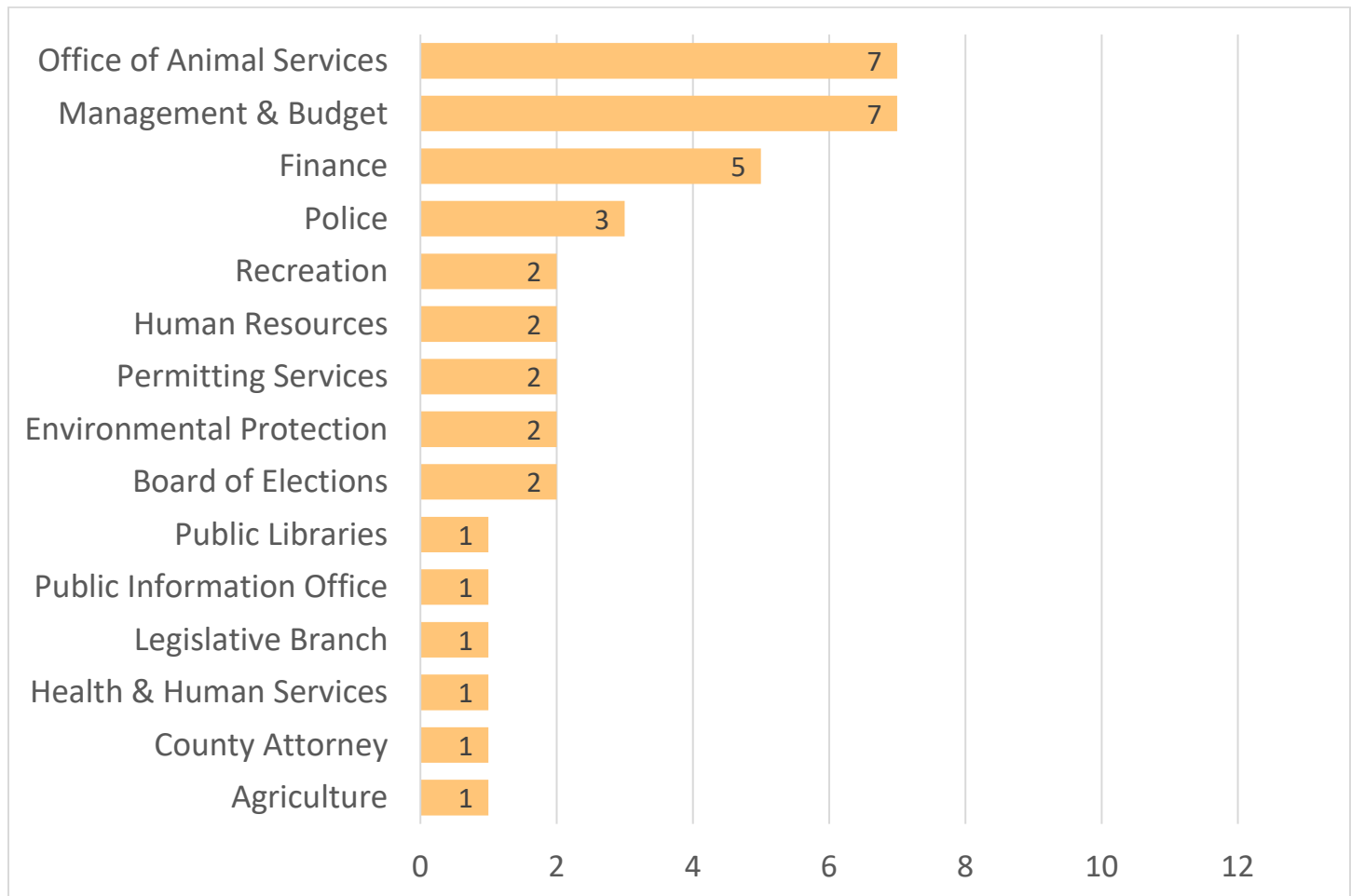
A total of fifteen datasets related to this bill have been published and are available on dataMontgomery. The remaining three datasets are scheduled to be published in FY26.

3.2 dataMontgomery Fiscal Year 2026 Plan

The main goal for Fiscal Year 2026 is to continue publishing and maintaining datasets from our countywide dataset inventory in a clear and informative format and to solicit new datasets to publish based on public requests and departmental needs.

3.2.1 Dataset Publication in Fiscal Year 2026

Datasets to be published were identified by priority and the schedule of when the datasets were to be published. There are a total of 38 datasets planned for publishing by the Department in FY26.



Highlights Will Include:

- DPS Residential Solar Panels
- DPS Commercial Solar Panels
- OAS Animal Intake
- OAS Animal Outcome
- POL Search incident to arrest
- POL SWAT

The list of datasets in the FY26 plan is detailed in [Appendix C: dataMontgomery Inventory for Fiscal Year 2026](#) and provided [as a link](#) in a searchable, consumable format.

3.3 dataMontgomery Inventory for FY27 and Beyond

The previous sections of this document have outlined the datasets currently available on the dataMontgomery website and those planned for release in the upcoming fiscal year. The remaining datasets identified in the dataset inventory process are provided in the table below. Based on their priority rankings, these datasets are scheduled for publication in Fiscal Year 2027 or later.

Datasets in the lowest priority categories will undergo careful evaluation to ensure that the resources allocated for their publication are justified before scheduling their release. It is anticipated that not all datasets will be published.

The table in [Appendix D: dataMontgomery Inventory for FY27 and Beyond](#) is organized by department and then by dataset in alphabetical order. The complete inventory of datasets is available in a user-friendly format on the dataMontgomery website. It is organized by department and then by dataset in alphabetical order. The complete inventory of datasets is available in a user-friendly format on the dataMontgomery website.

4.0 How Did We Establish Our Plan?

The inventory, scheduling, and publishing of datasets that have resulted in the plan described in 3.0 Dataset Inventory and Publishing Schedule are the result of many processes, structures, and activities. This section describes the foundational activities that have occurred to develop this plan and effectively run our open data program.

4.1 Dataset Inventory Update Process

Montgomery County has 31 Executive Branch departments, offices, and agencies, which collectively employ more than 600 applications, databases, and spreadsheets from which “data” may be derived. In 2014, in collaboration with executive branch departments and offices, an extensive inventory effort was completed that resulted in a comprehensive dataset inventory of approximately 665 datasets. Please see [Appendix B: Initial Dataset Inventory Process](#) for more information on how the foundational dataset inventory was compiled.

To comply with the Open Data Act’s requirement for an annual update of Montgomery County’s dataset inventory, Montgomery County needed to develop a systematic approach to 1) identify, inventory, and prioritize newly identified datasets and 2) incorporate the new datasets *into* the overall dataset inventory and publishing schedule.

To facilitate the annual dataset inventory review and update, Montgomery County’s Department of Technology Enterprise Business Solutions (TEBS) created an online intake form for departments to submit the new dataset candidates and request the removal of datasets currently included in the dataset inventory list. Each new dataset was scored and prioritized using the existing scoring criteria; more information on publishing priority is contained in section 4.2 - *Establishing the Publishing Priority for Datasets* below. At the same time as this internal view of data inventory was occurring, Montgomery County also looked externally at our residents. Public users can either request new data or changes to existing datasets using the dataMontgomery “Suggest a Dataset” form. This feedback is captured on an ongoing basis and communicated to the data-owning departments. Each participating office and department inventory process was finalized with formal certification authorized by the department or office Director.

In fiscal year 2025, this exercise resulted in the addition of ten new datasets to the dataset inventory. Additionally, 478 existing datasets were identified as either unpublishable or duplicated. The reasons for the unpublishable status are detailed in Appendix E: Datasets Currently Unpublishable.

4.2 Establishing the Publishing Priority for Datasets

Once all the dataset candidates were collected, the datasets were subjected to a quantitative prioritization process, which was also used during the initial dataset inventory exercise in 2014. The goal of the prioritization process was to assign each dataset a “score” representing its value relative to the others. Every dataset’s value was independently rated on twelve criteria, six “internal” and six “external,” by CountyStat and the Public Information Officer. For additional information on the scoring values for prioritizing the datasets, including the scoring methodology used, please refer to [Appendix H: Dataset Scoring Methodology and Outreach](#) of this document.

The result is a list that ranks the datasets in a manner that allows dataMontgomery to manage the inventory pipeline and get the highest value datasets published first. After scoring and ranking the datasets, Montgomery County feels that this approach was practical in creating a well-balanced pipeline that reflects the priorities of the government and the community.

Please note that several factors affect a dataset's priority ranking. While the value to residents is undoubtedly a very significant factor, other internal factors also influence the ranking. For example, datasets that improve internal efficiency and communication within the government may rank higher.

Each dataset has been assigned a numerical score ranging from 0 to 100. Based on this numerical score, the County has established the following **five priority groupings**:

- Group P1: Datasets ranked 80 and above
- Group P2: Datasets ranked 70 – 79
- Group P3: Datasets ranked 60 – 69
- Group P4: Datasets ranked 50 – 59
- Group P5: Datasets ranked 49 or lower

The priority groups will be used as a guideline in scheduling datasets for publication. Generally, the datasets with higher rankings will be scheduled for publication before datasets with lower rankings. However, certain factors may lead to slight deviations in scheduling by priority groups. For example, if a highly ranked dataset resides on a county system scheduled for imminent replacement, publication of that dataset would likely be delayed until the new system comes online. In another example, if in the process of publishing a highly ranked dataset, it is discovered that the required interfaces could also be easily leveraged to publish a companion lower-ranked dataset, then the decision will likely be made to publish both datasets at the same time for efficiency.

4.3 Revisions to Datasets and Priority Groupings

The list of datasets scheduled for publication on dataMontgomery is not static. As new IT systems come online, the data contained in these systems will be inventoried and prioritized for publication on the platform.

The priority rankings for a dataset may also change over time. A dataset with a specific priority ranking today may be reprioritized with a new priority ranking based on changes to any of the internal or external factors, such as:

- A department defines a new headline measure that includes the dataset
- A department identifies cost savings or improved efficiency gained from the publication of the dataset
- A dataset used by only one department becomes valuable to multiple departments
- Citizens identify that the publication of the dataset will make a positive impact on the community
- Citizens or local businesses identify the dataset as creating an economic opportunity

Montgomery County will continue to solicit input from our citizens in a variety of ways, including:

- Public outreach events, such as Town Halls, focus groups, etc.
- Feedback solicited from the dataMontgomery website.
 - At the bottom of the main page, users are asked to “Suggest a Dataset” if they did not find what they were looking for. These requests are sent directly to the dataMontgomery project team.

4.4 Policy for Dataset Changes or Removal

Each dataset published on dataMontgomery must be reviewed and authorized by the department owning the data prior to publication via a signed Dataset Publication Agreement. The County's Open Data Workgroup must also authorize datasets with data impacting multiple departments. As part of this agreement, the department agrees to update and maintain the source data, keeping it as accurate and valuable as possible.

For any structural changes required for a published dataset (adding or deleting data elements), the owning department must complete a formal Change Order, which modifies the original Dataset Publication Agreement. This Change Order requires the same signature level authority as the original agreement to publish the dataset.

Suppose a department can no longer maintain a published dataset. In that case, the department must complete a formal Change Order to remove the dataset from dataMontgomery or indicate this during the annual certification of a department's dataset inventory, which requires the department Director's signature authority. These requests will be reviewed and approved by the dataMontgomery Steering Committee.

The goal of any successful open data program is to provide limitless access to all published data. However, circumstances may dictate that a dataset should be removed from dataMontgomery, such as if data is found to be inaccurate or loses its applicability/usability over time. Any decision to remove a dataset from dataMontgomery will not be taken lightly. The County, however, maintains the Right to discontinue, as detailed in the Terms of Use, Section 6.

The datasets removed or postponed have been listed in [Appendix E: Datasets Currently Unpublishable](#).

4.5 Data Privacy

In the interest of government transparency and accountability, Montgomery County's open data program establishes the goal of publishing as much government data as can be published. But what criteria are used to determine if a dataset is publishable, and what safeguards are in place to ensure that inappropriate information is not published?

First and foremost, any data that is protected by any personal privacy legislation (HIPAA, MPIA, etc.) will not be published on dataMontgomery. Additionally, any data collected by Montgomery County, whose publication might pose a public safety threat, will not be published on dataMontgomery. Please refer to *Sections 7 & 8 of Appendix I: MPIA Response Publishing* for a detailed listing of the types of information that must not be made public.

The dataMontgomery team has implemented many safeguards designed to ensure that this type of protected information is not published on the dataMontgomery website, including:

1. The Office of the County Attorney staff assigned to support dataMontgomery must review every dataset containing data that has not been previously published on some other platform. This review includes determining the legality of publishing the data in each dataset.
2. The dataMontgomery Steering Committee includes a member of the Office of the County Attorney staff.
3. The dataMontgomery Workgroup includes a member of the Police Department staff.
4. Prior to publication, every new dataset must first be released on a private development area of dataMontgomery, where it must be reviewed and approved in writing by the Director or representative of the department owning the data, certifying that the dataset is ready for publication.

4.6 Open Data Project Governance and Staffing

Montgomery County's Department of Technology and Enterprise Business Solutions (TEBS) has established a multi-layered governance process for the Open Data project. The governance process used for this project leverages the governance processes as defined in the County's Enterprise Technology IT Strategic Plan, Section 6: Governance, which can be viewed online on the Montgomery County Government website under the [Department of Technology – Strategic Plan](#).

An Assistant Chief Administrative Officer chairs the Open Data Steering Committee. It consists of the Director of the Department of Technology and Enterprise Business Solutions, the Director of the Public Information

Office, the CountyStat Manager, and a liaison from the Office of the County Attorney. The Steering Committee meets as needed to review overall policy objectives and issues related to the County's Open Data program.

The TEBS Open Data Project Manager chairs the Open Data Workgroup, which includes representatives from the Department of Technology and Enterprise Business Solutions, the Public Information Office, the Montgomery County Police Department, and CountyStat. The Group meets as needed to review tactical issues with the County's Open Data program, including dataset identification, prioritization, and publication.

TEBS has formed a matrixed Open Data Project Team tasked with overseeing the execution of the Open Data Implementation Plan. The team consists of an Open Data Project Manager, project management staff from the TEBS Project Management Office, and technical staff from the TEBS Enterprise Service Bus Team. The Project Manager and project management staff generally work with the County's departments to identify and prepare datasets for publication. The technical staff works with departments to develop the programs to automate, wherever possible, the publication of the departmental datasets onto dataMontgomery. The Open Data Project Team is staffed at a level to support the publication of new datasets and development of new Open Data Initiatives, as detailed in [Section 4](#) of this document, as well as the ongoing operations of the dataMontgomery website.

Additionally, each County department has a Point of Contact (POC) who represents them in the process of identifying, documenting, and eventually publishing the data from their department. All the POCs have access to training and education on open data topics and have become the leaders in their departments for this open data initiative. Please refer to the next section of this document for more information on the data inventory process and the POC's vital role in support of this effort.

4.7 dataMontgomery Website Availability and Bandwidth

The County has selected a leading cloud provider to host our single-source open data portal as a cloud service. The vendor is responsible **for maintaining 24/7 website availability, with minimal scheduled interruptions for internal maintenance. The vendor is also required to provide sufficient bandwidth to ensure robust response times to dataMontgomery users.**

Appendix A: Published Datasets

Through the end of Fiscal Year 2025 (FY25), Montgomery County Government has published over 492 datasets representing County departments on the [dataMontgomery website](#).

The County's Fiscal Year runs from July 1 to June 30. The table below lists all published datasets.

This [data](#) is also available in a searchable and consumable format.

Department	Dataset Name	Description
Agriculture	Agricultural Development Rights Transfers	1980-present trends of TDR [transfer development rights] and also acres
Agriculture	Agriculture Transfer Tax collected	1980-present agricultural transfer taxes collected in the County
Agriculture	Annual Farm Tours 2017	local farms and participating residents to indulge in seasonally fresh food.
Agriculture	Annual Farm Tours 2024	local farms and participating residents to indulge in seasonally fresh food.
Agriculture	Annual Farm Tours 2025	local farms and participating residents to indulge in seasonally fresh food.
Agriculture	Cumulative Agriculture Easement Acres	1980-present cumulative acres of land protected by easement by fiscal year
Agriculture	Easement	Landowners voluntarily give up their development rights in exchange for various financial incentives. Today, there are seven programs and approximately 70,000 acres that landowners can choose from.
Agriculture	Farmers Markets 2019	List of Farmer Markets in Montgomery County
Agriculture	Farmers Markets 2023	List of Farmer Markets in Montgomery County
Agriculture	Geographic Representation of Reserves	Land Conservation and the preservation of farmland for future food and fiber production.
Agriculture	Total Assessed Agricultural Acres	1980-present data of total acres of agriculturally assessed properties in the County
Alcohol Beverage Services	Alcoholic beverage license violations	AAC: Alcohol Awareness Certified Person No One On remises; ABR: Alcoholic Beverages removed from ON SALE ONLY licensed facility for use at another AB licensed facility; AFTER HOURS: Selling/serving alcoholic beverages after permitted hours; ALCOHOL SALE: Sale to Minor;

Alcohol Beverage Services	DLC Licensee Data	Provide a listing of current Liquor licensees
Alcohol Beverage Services	Inventory Breakages / Waste	A log of inventory breakages or waste
Alcohol Beverage Services	Inventory Cases Sold (609 Report)	List the Cases sold over the last 13 months for each item
Alcohol Beverage Services	Liquor Stores	County retail stores with location, hours, and inventory
Alcohol Beverage Services	Product Purchases by DLC	This dataset contains a list of items by department and category that DLC has purchased; Items are displayed in case units only.
Alcohol Beverage Services	Sales Data (warehouse and stores)	A listing of sales data by item and department is updated monthly
Alcohol Beverage Services	Special Order Fulfillment	Log of time taken to fulfill special orders in days
Alcohol Beverage Services	Store Inventory and sale items	Provide a listing of inventory items that will display store quantity and sale prices
Board of Elections	2014 Early Voting Centers Map	Map of 2014 early voting locations in Montgomery County as selected October 21, 2013, subject to approval by the Maryland State Board of Elections. For more information, see www.777vote.org .
Board of Elections	2022 Early Voting Centers	2022 Early Voting locations in Montgomery County, subject to approval by the Maryland State Board of Elections. For more information, see www.777vote.org .
Board of Elections	Ballot Drop Off Locations for the 2022 Gubernatorial Primary Election	This dataset displays information regarding the ballot drop off: You can return your ballot by mail, or you can drop off your completed, voted ballot at a drop box location in Montgomery County. Simply place your completed ballot in the return envelope, sign the oath on the envelope, seal the return envelope, and take it to a drop box in the county. Ballot drop boxes will be delivered at different times. The drop boxes will be available through 8 PM, Tuesday, July 19th 8 PM Please make sure your oath is signed on the return envelope, or the ballot will not count. Ballot drop boxes are monitored and secured by trusted election officials. Ballots are retrieved from drop boxes daily by bipartisan election teams. The drop boxes are not property of the United States Postal Service. If you have any questions, please contact your local election office. This list may be updated to include new drop box locations as they become available. For location updates, visit https://elections.maryland.gov/voting/documents/Primary_Ballot_Drop_Box_List.pdf .

Board of Elections	BOE- Precinct Voter Counts (1/2024 and on)	This dataset contains Voter Counts by Precinct and political parties from 1/1/2024 and on.
Board of Elections	Election calendar - dates and deadlines	Election calendar - dates and deadlines
Board of Elections	Election records (polling place and call center data)	Election activity records (polling place and call center data)
Board of Elections	FY18 Early Voting Centers	2018 Early Voting locations in Montgomery County, subject to approval by the Maryland State Board of Elections. For more information, see www.777vote.org .
Board of Elections	Gubernatorial General Election Results	Gubernatorial General Election Results by Precinct
Board of Elections	Precinct Voter Counts	Precinct Voter Counts
Board of Elections	Presidential General Election Results	Presidential General Election Results by Precinct
Community Engagement Cluster	Commission for Women	Calendar of Events
Community Engagement Cluster	RSC Locations and Hours	Location, hours of operation, and services provided
Community Engagement Cluster	Volunteer Center - Registered Agencies	Volunteer Center - Registered Agencies
Community Engagement Cluster	Volunteer Opportunities	List of Volunteer opportunities and agencies
Community Use of Public Facilities	All Community Use of Public Facilities FY15	All community use in public facilities, including hours of use
Community Use of Public Facilities	Available Public Facilities	List of all available public facilities with address

Community Use of Public Facilities	Childcare Providers Using School Facilities	List of childcare providers in schools, including contact information
Community Use of Public Facilities	Community Use MCPS Center Information	Here is a list of all available public facilities with addresses: Add Facility (room) descriptions for Gyms, All-Purpose rooms/Cafeterias, and the Auditorium (High School). Also, there is an ongoing MCPS field inventory and links to GIS data.
Community Use of Public Facilities	Cultural Schools using public facilities	List of Cultural schools using public facilities, including contact information
Community Use of Public Facilities	Religious Group List	List of religious groups using public facilities, including group contact information
Consumer Protection	Commercial Parking Lots	Inventory of Commercially Owned Parking Lots
Consumer Protection	New Home Builder Licenses	The Office of Consumer Protection (OCP) licenses any builder or anyone acting as a building contractor who constructs new homes in Montgomery County.
Consumer Protection	OCP Licensing	This database contains licensee information for second-hand personal property dealers in Montgomery County. Data includes licensee name and contact information, business name and contact information, license status, payments, and comments.
Consumer Protection	Office of Consumer Protection (OCP) Investigations Data	This dataset provides information about the consumer complaint cases that OCP investigates. The data includes the date the complaint was received, the assigned consumer complaint case number, the complainant's Montgomery County Council District, if applicable, and whether the complainant resides within a County Council Equity Focus Area. The data also includes a description of the complaint's core issue, a description of the alleged conduct subject to the investigation, and the status of the consumer complaint.
Consumer Protection	Property Owner: Owner Acting as Contractor	Property addresses are where homeowners have approved permits to act as their building contractors to build their residence.
Consumer Protection	Registration database - MVR & Towing	This database contains registration information for Motor vehicle repair and towing businesses. Data includes the registrant's name and contact information, the business name and contact information, the location of the towing storage facility, and the fee and license status.
Consumer Protection	Registration Database - Radio, Television & Appliance Repair and Installation	Database of Radio, Television & Appliance Repair and Installation service providers in Montgomery County; records contain registrant name and contact information, business name and contact information, registration status, and payment information

Consumer Protection	Second-Hand Personal Property	Second-Hand Personal Property Owners
Consumer Protection	Trespass Tows	Display the date, time, and location of a trespass tow, the name of the towing company that towed the vehicle, either the VIN or license number of the towed vehicle, and the location of the storage lot for the towed vehicle
Correction and Rehabilitation	Correctional Facility Average Daily Population	This dataset contains accumulated monthly data with details from Pre-Trial Average daily caseload * Detention Services, Average daily population for MCCF, MCDC, PRRS, and Pre-Release average daily population for the last three calendar years. Update Frequency: Monthly
Correction and Rehabilitation	CPU Processing/Booking of Arrestees	The number of bookings is tracked through the CRIMS system
Correction and Rehabilitation	DOCR (Department of Corrections and Rehabilitation) security incidents	Security incidents are broken out under the Director's county stat performance plan as follows: Number of inappropriate releases, number of escapes from PRRS, number of escapes returned to PRRS, number of inmate suicides, number of jail escapes. This data is manually captured and is numbered as a whole number.
County Attorney	Appeals statistics	Appeals case wins/losses
County Attorney	Bill 19-21 – Settlement Agreements Report	Council passed a Bill #19-21 that requires OCA to publish annually a list of settlements of County SIF lawsuits, including a survey of claimants'/plaintiffs' demographic information. The report must be published annually by October 1 of the prior fiscal year. FY22 report is due 10/1/2022
County Attorney	Code Enforcement	List of Citations by department, drill down to home area by zip code
County Attorney	Disruptive Behavior Orders	This dataset includes an annual list of Disruptive Behavior Orders (for a person engaging in prohibited conduct in a public facility).
County Attorney	Litigation Case Closeouts	Summary of litigation case disposition
County Executive's Office	eTravel	Non-local travel expenses approved for employees
County Executive's Office	Executive Orders	The authority granted to the County Executive by law to take a particular specific action, or how the County Executive exercises his general executive powers. An order generally directs a specific single action rather than establishing rules and standards.
County Executive's Office	National Association of Counties	NACo awards received by Montgomery County for outstanding programs

	(NACo) Achievement Awards	
County Executive's Office	Public Hearings	A public hearing is a forum established to secure information from citizens and groups.
Emergency Management & Homeland Security	Alert Montgomery Alert History	A listing of email and text notifications sent out through the Alert Montgomery system
Emergency Management & Homeland Security	Alert Montgomery Statistical Data	Various statistics on Alert Montgomery, including sign-ups and device types.
Emergency Management & Homeland Security	Departmental Emergency Support Function Responsibilities	This chart shows which departments have primary or support responsibility for the county's Emergency Support Functions within the county's Emergency Operations Plan
Emergency Management & Homeland Security	Disaster Assistance Center Activation	Record of activations of the disaster assistance center following an emergency, such as an apartment fire.
Emergency Management & Homeland Security	FEMA Disaster Reimbursement s	A list of disasters from 2000 to the present in which Montgomery County received FEMA reimbursements
Emergency Management & Homeland Security	Shelter Activation Status	This dataset will connect the shelter data on WebEOC (the county's emergency management system) with the data on the dataMontgomery site to allow users to view information about shelters open during an emergency when a shelter is activated in WebEOC.
Employee Retirement Plans	Deferred Compensation Plan (DCP) participants	Deferred Compensation Plan (DCP) participants
Environmental Protection	2021 energy benchmarking of all sites	2021 energy benchmarking of all sites
Environmental Protection	2022 energy benchmarking of all sites	The Energy Benchmarking Law requires the County to make annually reported energy benchmarking information readily available to the public. This dataset reflects data received by the publication date. It does not include individually attributable data for buildings in Groups 3 and 4, as CY 2022 was the first year that these buildings were required to report to DEP.

Environmental Protection	2023 energy benchmarking all sites	The Energy Benchmarking Law requires the County to make annually reported energy benchmarking information readily available to the public. This dataset reflects data received by the publication date. It does not include individually attributable data for buildings in Groups 3 and 4, as CY 2022 was the first year that these buildings were required to report to DEP.
Environmental Protection	Building Energy Benchmarking Results	Building and energy metrics resulting from the County Benchmarking Law.
Environmental Protection	CEM Emissions	Continuous emissions data from the Dickerson waste-to-energy plant
Environmental Protection	DEP - Solid Waste Facilities	Name and address of each Solid Waste facility
Environmental Protection	DEP- FY24 Solid Waste Charges	A schedule of the breakdown of Solid Waste Charges was sent to the Treasury so they would know how to input the codes into the MUNIS system.
Environmental Protection	DEP- Levy Year 2024 Solid Waste Charges	This dataset contains data on MCG DEP Levy Year 2024 Solid Waste Charges. Additional details about the solid waste charges, refund options, and other specific situations are available on the webpage dedicated to the solid waste charges: https://www.montgomerycountymd.gov/sws/swc/
Environmental Protection	Dickerson Weather Station	Weather data from Dickerson
Environmental Protection	Illegal Dumping	A location of unlawful dumping cases handled by the department
Environmental Protection	Noise complaints	Noise complaints initiated by citizens through 311 or a web form
Environmental Protection	Rainscapes Rewards	Types and location of rainscapes installed
Environmental Protection	Recycling Public Outreach and Education Calendar and Events	This program provides outreach and education on recycling-related topics: waste reduction, reuse, recycling, grass cycling, composting, buying recycled, etc. This outreach/education may occur at events in the community.
Environmental Protection	Refuse & Recycling map of service areas.	Refuse and Recycling map of routes serviced by County contracted licensed haulers.
Environmental Protection	Reported Sanitary Sewer Overflows	Sanitary sewer overflows reported to the Department of Environmental Protection by the Washington Suburban Sanitary Commission or individuals in the County.
Environmental Protection	Solid Waste Customer Information	311 data specific to solid waste-related SRs could have granular location data

Environmental Protection	Stormwater facilities	Inventory of stormwater facilities - mapped as well
Environmental Protection	Stream Restoration Map	A location of all stream restoration projects in the county
Environmental Protection	Transfer Station Scale House Data	Weights and load counts of different types of inbound and outbound waste and recycled commodities that cross the truck scales at the Shady Grove Processing Facility and Transfer Station and the Recycling Center
Environmental Protection	Tree planting locations	A map of locations of trees planted from funds generated by the Tree Canopy Law.
Environmental Protection	Water Quality Protection Charges	This data is used to track conditions in our streams, and a portion of it is used to meet MS4 permit requirements.
Environmental Protection	Water Quality Stream Map - water level	Event-driven, based on monitoring events. This dataset contains data that is used to track conditions in our streams. A portion of this data is used to meet MS4 permit requirements.
Ethics Commission	General Outside Employment	Displays all Outside Employment approvals for non-police County employees
Ethics Commission	Lobbying Semi-Annual Activity Reports	Shows all expenses and revenues of registered lobbyists in Montgomery County for six months
Ethics Commission	Outside Employment Approvals for Montgomery County Police	Displays all outside employment approvals obtained by County police officers
Finance	Bag Tax	Store names, number of bags, revenue collected
Finance	Business Innovation Network Tenants	List of companies in the incubator network
Finance	Business Personal Property	Business Name and Address
Finance	Business Personal Property - 2021	Business Name and Address
Finance	Business Personal Property - 2022	Business Name and Address

Finance	Business Personal Property - 2024	Business Name and Address
Finance	Business Personal Property - 2025	Business Name and Address
Finance	eCigarette Excise Tax	Contains information on excise taxes paid by distributors that sell e-cigarettes.
Finance	Economic Development Fund Grant and Loan Program	Economic Development Fund Awards
Finance	Economic Development Fund Grant and Loan Program	Economic Development Fund Awards
Finance	Economic Development Fund Grant and Loan Program	Economic Development Fund Awards
Finance	Hotel Tax	This dataset contains information on the Room Rental-Transient Tax (Hotel Tax): Section 52-16 of the Montgomery County Code, as amended, imposes a Room Rental-Transient Tax upon every person, who for a period of thirty or fewer days occupies, for compensation, sleeping accommodations in a public or private hotel, motel, inn, hostelry, tourist home, a residential house or a room within a house, and or any other lodging located in Montgomery County, Maryland.
Finance	Levy Year 2023 - Real Property Tax Rates	Real property tax rate for 2024
Finance	Property Tax Credits	Property Tax Credits
Finance	Real Property Tax	Property Tax Data
Finance	Real Property Tax Rates	Real property tax rate for 2012
Finance	Real Property Tax Rates - 2021	Real property tax rate for 2021
Finance	Real Property Tax Rates - 2022	Real property tax rate for 2022

Finance	Real Property Tax Rates - 2024	Real property tax rate for 2024
Finance	Risk Management Corvel Injury Data	Risk Management Corvel Injury Data
Finance	Risk Management Corvel Injury Data FY23	Risk Management Corvel Injury Data FY23
Finance	Risk Management Corvel Injury Data FY24	Risk Management Corvel Injury Data FY24
Finance	Small Business Innovation Research And Small Business Technology Transfer Matching Grant Program	FY22 Grants provide financial assistance to life sciences employers to retain jobs and stimulate the industry's organic growth.
Finance	Small Business Innovation Research And Small Business Technology Transfer Matching Grant Program	FY24 Grants provide financial assistance to life sciences employers to retain jobs and stimulate the industry's organic growth.
Finance	Small Business Innovation Research And Small Business Technology Transfer Matching Grant Program	FY25 Grants provide financial assistance to life sciences employers to retain jobs and stimulate the industry's organic growth.
Finance	Spending Disclosure - Fiscal Year 2011	This Spending Disclosure dataset allows the public to search and view summary information on payments made to recipients (suppliers) who received \$ 25,000 or more in a fiscal year. Note that salary and benefit payments to employees, pension payments to retirees, and any confidential information under State or Federal law are excluded from disclosure.

Finance	Spending Disclosure - Fiscal Year 2012	This Spending Disclosure dataset allows the public to search and view summary information on payments made to recipients (suppliers) who received \$ 25,000 or more in a fiscal year. Note that salary and benefit payments to employees, pension payments to retirees, and any confidential information under State or Federal law are excluded from disclosure.
Finance	Spending Disclosure - Fiscal Year 2013	This Spending Disclosure dataset allows the public to search and view summary information on payments made to recipients (referred to as suppliers) who received \$25,000 or more in a fiscal year.
Finance	Spending Disclosure - Fiscal Year 2014	This Spending Disclosure dataset allows the public to search and view summary information on payments made to recipients (suppliers) who received \$ 25,000 or more in a fiscal year. Note that salary and benefit payments to employees, pension payments to retirees, and any confidential information under State or Federal law are excluded from disclosure.
Finance	Take Home Vehicles	Take-home vehicles that County employees use
Finance	Telephone Tax	TELEPHONE TAX IN GENERAL
Fire & Rescue Services	Apparatus Location at Fire Stations	List of Montgomery County Fire and Rescue Service Frontline Apparatus at each Fire Station.
Fire & Rescue Services	Child Car Seat Program	Data on car seat program numbers to include # of car seats installed, the number of vouchers given, and personnel hours
Fire & Rescue Services	Community Emergency Response Training (CERT)	data on the Community Emergency Response Training (CERT) program, number of persons trained, etc.
Fire & Rescue Services	Community Outreach	information regarding personnel interaction with homeowners regarding smoke detectors, batteries,
Fire & Rescue Services	Emergency Medical Services (EMS) Transportation Fee	Rates and methods for EMS transport fee collection
Fire & Rescue Services	MCFRS Incidents by Station	This dataset contains the monthly summary data indicating incidents in each fire station response area. The summary data is the incident count broken down by call type group for each fire station response area.
Fire & Rescue Services	MCFRS Incidents by Station Monthly Details	This dataset contains detailed monthly data indicating incidents that occurred in each fire station response area. The data is the incident count broken down by call type group for each fire station response area.

Fire & Rescue Services	Training Academy Classes	a spreadsheet indicating classes offered by the PSTA, delineating costs and hours
Fire & Rescue Services	Volunteer Participation	Data on the hours volunteer members ride and train
General Services	CIP Status	Capital Improvement Project listing
General Services	Facilities - Work Order Summary	This Facilities Maintenance Work Order Summary dataset shows the number (#) of maintenance work orders issued on a yearly basis. Please note that the 2020 data contains only 6 months of work orders (from 6/2020 to 12/2020)
General Services	Facilities Maintenance Work Order Completion Status	This Facilities Maintenance Work Order Completion Status dataset shows the number (#) and percent (%) of work orders in open (incomplete) and closed (complete) status monthly. The monthly data are reported on the first of the month for the previous month.
General Services	Fleet - County Managed Fuel Sites	County-managed fuel sites
General Services	Fleet - Equipment Inventory	Fleet equipment (vehicle) inventory and status (readiness)
General Services	Fleet - Fuel Consumption	Public and County fuel consumption by fuel type
General Services	Greenhouse Gas Emissions	The monthly Greenhouse Gas (GHG) emission data represents Montgomery County Facilities and Fleet by month, beginning July 2019.
General Services	Leases	County lease listing - including both the County as the tenant and as the landlord
General Services	Utility Usage	Utility usage for County facilities - including electricity, gas, water, etc.
Health & Human Services	Assisted Living Facilities	This is a directory of state-licensed assisted living facilities located in Montgomery County. It may be expanded in the future to cover additional facilities for older adults.
Health & Human Services	Bodyworks Licensing	Bodywork is the practice of using one's hands to apply pressure on an individual's fully clothed body or bare feet to affect the electromagnetic energy, energetic field, or energy meridians of the human body. It includes reflexology or acupressure.
Health & Human Services	Child Welfare Services (CWS) Investigations	Data would show the total number of Child Welfare Service cases broken down by type of allegation/investigation.

Health & Human Services	Food and Pool Plan Review	All applications for plan review of food facilities and pools are made available for WSSC access. The public will also have access. The information will include the location address, owner, assigned EHS, type of facility, etc. It is currently under development.
Health & Human Services	Food Inspection	This dataset includes food inspection results for non-mobile food establishments in Montgomery County that have an active license.
Health & Human Services	Holiday Giving Project of Montgomery County	Referrals by zip code for Thanksgiving and December requests for assistance - may include overall referrals, referrals by language spoken, number of children, etc.
Health & Human Services	Licensed Nursing Homes	Matrix of Geocoded locations and attributes of nursing homes with State score of 1-5
Health & Human Services	Medical Assistance Caseloads	Historical average caseloads
Health & Human Services	Medical Facilities	Locations of clinics, program locations for medical and dental services
Health & Human Services	Mortality Rates/Population Health Measures	PHS Planning and Epidemiology receives an annual data file of Montgomery County resident deaths registered with the Maryland Vital Statistics Administration. Using SAS analytic software, HHS staff apply programs that standardize, aggregate, and calculate rates for each cause of death category consistent with state and national categories and by subgroups based on age, gender, race, and ethnicity combinations.
Health & Human Services	Respite Care Services	The data submitted would show the number of unduplicated people served on a quarterly basis
Housing & Community Affairs	Code Housing Code Enforcement	Code Enforcement Inspections, Violations, and Service Requests
Housing & Community Affairs	Landlord-Tenant Cases	Complaints administered by OLTA
Housing & Community Affairs	MPDU	Moderately Priced Dwelling Unit program administration
Housing & Community Affairs	Multi-family Housing Loans	Housing development and rehab loans

Housing & Community Affairs	Rent Rate Survey	Annual rent rate survey (and past surveys)
Housing & Community Affairs	Residential Rental Licensing	Rental licenses for multi-family, single-family, condos, and accessory apartments
Housing & Community Affairs	Troubled Properties Analysis	Executive Regulation 05-17 provides a methodology for designating certain multifamily rental housing units as "Troubled Properties." These "Troubled Properties" are subject to at least annual housing code inspections and must develop and implement a corrective action plan. This dataset provides housing code inspection results along with scores for both severity and quantity of violations.
Human Resources	Average Salary by Job Classification	Search functionality for average actual salary by job classification and/or grade
Human Resources	Employee Salaries - 2012	This is salary information for all active, permanent Montgomery County, MD employees as of January 15, 2013. The data will be updated annually.
Human Resources	Employee Salaries -2021	This is salary information for all active, permanent employees of Montgomery County, MD, as of January 15, 2022. The data will be updated annually.
Human Resources	Employee Salaries -2022	This is salary information for all active, permanent employees of Montgomery County, MD, as of January 15, 2023. The data will be updated annually.
Human Resources	Employee Salaries -2023	This is salary information for all active, permanent employees of Montgomery County, MD, as of January 15, 2024. The data will be updated annually.
Human Resources	Employee Salaries -2024	This is salary information for all active, permanent employees of Montgomery County, MD, as of January 15, 2025. The data will be updated annually.
Human Resources	Group Health Plan Rates	Group health Plan rates are currently available on the website
Human Resources	Interpreter Tracking Database	Multilingual use in the County, who speaks what language
Human Resources	Job Classification List	List of all Montgomery County job classifications, grades, and specifications
Human Resources	Live Well Report	Wellness Activities, Programs, and Participation Results
Human Resources	MCG Open Positions (Position Dashboard, Position Inventory)	a list of open positions and classifications available in the County. Vacant vs filled positions, # of vacant positions, salaries associated with each, open positions by department

Human Resources	MCG Summary of Employee by Location	Summary of MCG employee work location versus home. Track the average travel from work to home.
Human Resources	MLS Hiring Report	Demographics on new MLS hires.
Human Resources	New Hire Report	Demographic report of new County employees.
Human Resources	Personnel Management Review	Comprehensive review of general information concerning the size and composition of the County government workforce; employee turnover rates and reasons for turnover; and information concerning the comparability of County salary ranges with those of public and private sector organizations in the Washington/Baltimore metropolitan area.
Human Resources	Position Dashboard/PM R Dashboard, Demographic Information	Provides demographic information for Montgomery County employees.
Human Resources	Position/PMR Dashboard, MLS Demographic Report	Report, by various demographic measures, for MLS employees.
Human Resources	Promotion Report	List of employees, with select demographic descriptors, who are in regular promotions and temporary promotion status
Human Resources	Recruitment Year End Report	Statistics related to the hiring process, including # of resumes received, job announcements, new hires (FT/PT, merit vs temp), average time to fill positions, number of hiring managers, etc.
Human Resources	Salary Schedules	List of all MCG salary schedules for current and past fiscal years
Human Resources	Training Inventory and Satisfaction Survey	Total number of employees and percentage of those employees who find the training helpful to their jobs
Human Resources	Tuition Assistance	This dataset includes a list of classes approved and paid through the County tuition assistance program, including the title and description of the course, the school the course will be taken at, the degree this class curriculum is a part of, the Department and title of the requestor, the dollar amount reimbursed to the employee.
Human Resources	Turnover Percentage Rate	The Montgomery County Government has a diverse workforce of employees who cross five generations and multiple age, race, gender, and ethnic groups. The dataset summarizes the County's turnover percentage by generational category, age, race, ethnicity, gender, and job class.

Human Resources	Workforce by generation - PMR	Workforce by generation report.
Human Rights	Calendar of Events	Committee on Hate Violence, Human Rights Commission, Inter-Agency Fair Housing Coordination Group
Intergovernmental Relations	Bill positions and statements	Bill positions with links to written statements
Intergovernmental Relations	Bills Tracked by OIR	General Assembly bills followed by OIR
Intergovernmental Relations	State Capital Projects	State capital projects in Montgomery County
Intergovernmental Relations	State Operating Aid Retirement	State Aid to Montgomery County Education
Intergovernmental Relations	State Operating Aid Direct	State aid to Montgomery County
Legislative Branch	Code of Montgomery County Regulations - Bills	Legislation adopted by the Montgomery County Council
Legislative Branch	Montgomery County Council Resolutions	A Resolution is a written motion adopted by the Montgomery County Council.
Legislative Branch	Montgomery County Council Zoning Text Amendments/ Ordinances	A zoning text amendment is a procedure that changes the written provisions of the ordinances contained in the Zoning Code. This dataset describes the ZTA. When it was introduced, the resolution number, sectional map amendments, etc.
Legislative Branch	Subdivision regulation amendments	Subdivision regulation amendments
Management & Budget	Approved Budget (Operating and Capital)	Budget Data (Approved)
Management & Budget	CIP Budget	CIP Budget
Management & Budget	Fiscal Revenues	Details all revenue by agency, fund type, and fund. The revenue schedules include data for the following County agencies: MCG, Debt Service, MCPS, Montgomery College, and M-NCPPC. Not included are: WSSC, HOC, and the Montgomery County Revenue Authority.

Management & Budget	Fiscal Year 2013 Approved Budget- Internal Service Funds	Internal Service Fund line-item budget data included in the approved operating budget for FY2013. Internal Service Funds (ISF) are proprietary funds used to record activity (primarily goods and services) provided by one department to other County government departments on a cost-reimbursable basis.
Management & Budget	Fiscal Year 2013 Approved Operating Budget	This dataset includes the Fiscal Year* 2015 County Executive Recommended operating budget for Montgomery County. The dataset does not include revenues and agency budget information; each agency, such as Montgomery County Public Schools, maintains its individual budget information. The data can be sorted, filtered, and exported by the following elements:
Management & Budget	Fiscal Year 2013 Budget	This dataset includes the Fiscal Year* 2013 Council-approved operating budget for Montgomery County. The dataset does not include revenues and agency budget information; each agency, such as Montgomery County Public Schools, maintains its individual budget information.
Management & Budget	Fiscal Year 2014 Approved Budget- Internal Service Funds	This dataset includes the Internal Service Fund data in the annual operating budget. Internal Service Funds (ISF) are proprietary funds used to record activity (primarily goods and services) provided by one department to other County government departments on a cost-reimbursable basis.
Management & Budget	Fiscal Year 2014 Approved Operating Budget	This dataset includes the Fiscal Year* 2014 Council-approved operating budget for Montgomery County. The dataset does not include revenues and agency budget information; each agency, such as Montgomery County Public Schools, maintains its individual budget information.
Management & Budget	Fiscal Year 2014 Budget	This dataset includes the Fiscal Year* 2014 Council-approved operating budget for Montgomery County. The dataset does not include revenues and agency budget information; each agency, such as Montgomery County Public Schools, maintains its individual budget information.
Management & Budget	Fiscal Year 2015 County Executive Recommended Operating Budget	This dataset includes the Fiscal Year* 2015 County Executive Recommended operating budget for Montgomery County. The dataset does not include revenues and agency budget information; each agency, such as Montgomery County Public Schools, maintains its individual budget information. The data can be sorted, filtered, and exported by the following elements:
Management & Budget	Fiscal Year 2015 County Executive Recommended Operating Budget Internal Service Funds	Internal Service Fund line-item budget data included in the approved operating budget for FY2013. Internal Service Funds (ISF) are proprietary funds used to record activity (primarily goods and services) provided by one department to other County government departments on a cost-reimbursable basis.
Management & Budget	FY13 Budget - Internal Service Funds	This dataset includes the Internal Service Fund data in the annual operating budget. Internal Service Funds (ISF) are proprietary funds used to record activity (primarily goods and services) provided by one department to other County government departments on a cost-reimbursable basis.

Management & Budget	FY14 Budget- Internal Service Funds	This dataset includes the Internal Service Fund data in the annual operating budget. Internal Service Funds (ISF) are proprietary funds used to record activity (primarily goods and services) provided by one department to other County government departments on a cost-reimbursable basis.
Management & Budget	FY23 Approved Operating Expenditure	This dataset includes the County Council-approved operating budgets and expenditures for Montgomery County. The data can be sorted, filtered, and exported by the following elements: Service, Department, Program, Cost Center (activity within a program), Fund Type, Expense Category, Subfund Name, Expense Type, and Account Name.
Management & Budget	FY23 OMB - Approved Capital Budget Projects	This dataset includes the County Council Approved Capital Budget, which covers larger long-term investments in facilities and infrastructure, or Capital Projects. Examples include the construction of public schools, libraries, street maintenance, and park improvements.
Management & Budget	FY23 OMB - Approved Expenditures for Capital Budget Projects	This dataset includes the County Council-approved capital expenditures for the projects for the recent fiscal years.
Management & Budget	FY23 OMB - Approved Revenue for Capital Budget Projects	This dataset includes the County Council-approved capital funding for the projects for the recent fiscal years.
Management & Budget	FY23 OMB Approved Revenue	The dataset details all revenue by agency, fund type, and fund. The revenue schedules include data for the following County agencies: MCG, Debt Service, MCPS, Montgomery College, and M-NCPPC. Not included are: WSSC, HOC, and the Montgomery County Revenue Authority.
Management & Budget	FY23 OMB Recommended Expenditure	This dataset includes the Fiscal Year* 2023 County Executive Recommended operating budgets for Montgomery County. The data can be sorted, filtered, and exported by the following elements: Function (grouping, such as "Public Safety"), Department, Program, Cost Center (activity within a program), Fund Type, Subfund Name, Expense Type, Recommended Amount, and Account Name. The Montgomery County fiscal year starts on July 1st and ends on June 30th.
Management & Budget	FY23 OMB Recommended Revenue	This dataset includes the County Executive's recommended operating budget revenues for Montgomery County. The data can be sorted, filtered, and exported by the following elements: Service, Fund Type, Item Category, Fund, and Description.
Management & Budget	FY24 Approved Operating Expenditure	This dataset includes the County Council-approved operating budgets and expenditures for Montgomery County. The data can be sorted, filtered, and exported by the following elements: Service, Department, Program, Cost Center (activity within a program), Fund Type, Expense Category, Subfund Name, Expense Type, and Account Name.
Management & Budget	FY24 OMB - Approved	This dataset includes the County Council Approved Capital Budget, which covers larger long-term investments in facilities and infrastructure, or Capital Projects.

	Capital Budget Projects	Examples include the construction of public schools, libraries, street maintenance, and park improvements.
Management & Budget	FY24 OMB - Approved Expenditures for Capital Budget Projects	This dataset includes the County Council-approved capital expenditures for the projects for the recent fiscal years.
Management & Budget	FY24 OMB - Approved Revenue for Capital Budget Projects	This dataset includes the County Council-approved capital funding for the projects for the recent fiscal years.
Management & Budget	FY24 OMB Approved Revenue	The dataset details all revenue by agency, fund type, and fund. The revenue schedules include data for the following County agencies: MCG, Debt Service, MCPS, Montgomery College, and M-NCPPC. Not included are: WSSC, HOC, and the Montgomery County Revenue Authority.
Management & Budget	FY24 OMB Recommended Expenditure	This dataset includes the Fiscal Year* 2023 County Executive Recommended operating budgets for Montgomery County. The data can be sorted, filtered, and exported by the following elements: Function (grouping, such as “Public Safety”), Department, Program, Cost Center (activity within a program), Fund Type, Subfund Name, Expense Type, Recommended Amount, and Account Name. The Montgomery County fiscal year starts on July 1st and ends on June 30th.
Management & Budget	FY24 OMB Recommended Revenue	This dataset includes the County Executive's recommended operating budget revenues for Montgomery County. The data can be sorted, filtered, and exported by the following elements: Service, Fund Type, Item Category, Fund, and Description.
Management & Budget	FY25 Approved Operating Expenditure	This dataset includes the County Council-approved operating budgets and expenditures for Montgomery County. The data can be sorted, filtered, and exported by the following elements: Service, Department, Program, Cost Center (activity within a program), Fund Type, Expense Category, Subfund Name, Expense Type, and Account Name.
Management & Budget	FY25 OMB - Approved Capital Budget Projects	This dataset includes the County Council Approved Capital Budget, which covers larger long-term investments in facilities and infrastructure, or Capital Projects. Examples include the construction of public schools, libraries, street maintenance, and park improvements.
Management & Budget	FY25 OMB - Approved Expenditures for Capital Budget Projects	This dataset includes the County Council-approved capital expenditures for the projects for the recent fiscal years.
Management & Budget	FY25 OMB - Approved Revenue for	This dataset includes the County Council-approved capital funding for the projects for the recent fiscal years.

	Capital Budget Projects	
Management & Budget	FY25 OMB Approved Revenue	The dataset details all revenue by agency, fund type, and fund. The revenue schedules include data for the following County agencies: MCG, Debt Service, MCPS, Montgomery College, and M-NCPPC. Not included are: WSSC, HOC, and the Montgomery County Revenue Authority.
Management & Budget	FY26 OMB Recommended Expenditure	This dataset includes the Fiscal Year* 2023 County Executive Recommended operating budgets for Montgomery County. The data can be sorted, filtered, and exported by the following elements: Function (grouping, such as "Public Safety"), Department, Program, Cost Center (activity within a program), Fund Type, Subfund Name, Expense Type, Recommended Amount, and Account Name. The Montgomery County fiscal year starts on July 1st and ends on June 30th.
Management & Budget	FY26 OMB Recommended Revenue	This dataset includes the County Executive's recommended operating budget revenues for Montgomery County. The data can be sorted, filtered, and exported by the following elements: Service, Fund Type, Item Category, Fund, and Description.
Management & Budget	Grant data	Grants Database
Management & Budget	Recommended Budget (Capital + Operating)	Budget Data for both PSP and CIP
Permitting Services	Agency Service Requests	Complaints submitted to DPS for investigation and possible enforcement
Permitting Services	Agricultural Producers Certificates	Licensed Agricultural Producers
Permitting Services	Antenna/Wireless Permits	A permit is required for all installation or removal activities related to antennas and/or wireless communication facilities, whether located within the public right of way, on private property, or on a building rooftop.
Permitting Services	Bed & Breakfast Lodging Certificates	Licensed Bed and Breakfast Businesses
Permitting Services	Benefit Performance Licenses	Licenses issued for conducting benefit performances
Permitting Services	Code Modifications	During plan review, requests for modifications (exceptions) to the building code are made.
Permitting Services	Commercial Fast Track Permits	Commercial alteration permits are issued through the DPS Fast Track process.

Permitting Services	Commercial Permits	Data for all Commercial Building Permits issued since 2000, including status and work performed.
Permitting Services	Construction Activity - Commercial	Commercial permit for construction activity
Permitting Services	Construction Activity - Demolition	Demolition permits for construction activity
Permitting Services	Construction Activity - Public Right-of-Way	Right-of-way permit for construction activity
Permitting Services	County Well Permits	Permits issued for potable wells
Permitting Services	Demolition Permits	Demolition Permits
Permitting Services	Development Standards Variance	A " denied building permit " is required prior to requesting a variance at the Board of Appeals. This dataset contains those records. Information on the variance is not contained in this dataset and is held at the Board of Appeals.
Permitting Services	Door-to-Door Vendors License	Licenses for vendors selling goods door to door
Permitting Services	Electrical Apprentice Licenses	Licenses issued to apprentice electricians
Permitting Services	Electrical Building Permits	Data for all Electrical Permit applications, including status and work performed.
Permitting Services	Electrical Business Licenses	Data for all Electrical Business License Permit applications.
Permitting Services	Fence Permits	Permits issued for the construction of fences
Permitting Services	Fire Alarm Permits	Permits issued for the installation of fire alarm systems
Permitting Services	Fire Code Compliance Permit	Commercial building/tenancy permit to facilitate Life Safety and Fire Code compliance.
Permitting Services	Fire Protection Systems	Permits issued for the installation of fire protection systems
Permitting Services	Fire System License	Contractor Trade Licenses for Extinguisher, Fire Alarm, and Sprinkler

Permitting Services	Floodplain District Permits	Permits issued to control floodplain development
Permitting Services	Floodplain status request	Floodplain information requests are processed to determine if a planned building or grading activity is within a 100-year floodplain.
Permitting Services	Floodplain study	A floodplain study establishes the 100-year floodplain limits within or near a development to preserve the natural resources within the 100-year floodplain, protect property and persons, and apply a unified, comprehensive approach to floodplain management.
Permitting Services	Gaithersburg Commercial Building Impact Taxes	Impact taxes for commercial permits in Gaithersburg
Permitting Services	Gaithersburg Residential Building Impact Taxes	Impact taxes for residential permits in Gaithersburg
Permitting Services	General Permit	General Permits are required for specific locations where hazardous processes may occur.
Permitting Services	Historical Area Work Permits	Permits issued for construction affecting historic homes
Permitting Services	Home Occupation Certificates	Certificates issued for the operation of a business in a residence
Permitting Services	Inspections	Inspections are performed for issued permits.
Permitting Services	Journeyman Electrician Licenses	Licenses issued to journeymen electricians
Permitting Services	Limited Electrical Business Licenses	Licenses issued to electrical businesses that are restricted to a specific type of electrical work (e.g., signs, telephones, heating/air conditioning) or electrical work performed in a particular location (e.g., on-site maintenance for apartment buildings)
Permitting Services	Limited Master Electrician's Licenses	Licenses issued to Master Electricians that are restricted to specific types of electrical work (e.g., heat/air conditioning, signs, or telephones) or specific locations (e.g., apartment buildings)
Permitting Services	Master Electrician Licenses	Licenses issued to Master Electricians who may perform any electrical work throughout the County
Permitting Services	Mechanical Permits	Data for all Mechanical Permit applications, including status and work performed

Permitting Services	Non-conforming Use Certificate	Certificates issued for approval of a land use which existed prior to the establishment of zoning in a geographic area, or a change in zoning which makes the use no longer in compliance with the Zoning Ordinance
Permitting Services	Plan reviews	The permit completes plan reviews
Permitting Services	Public Right of Way Permits	Data for all Public Right of Way Permit applications, including status and work performed.
Permitting Services	Regular Route Vendors License	Licenses for vendors selling goods on a regular route
Permitting Services	Residential Permit	Data for all Residential Building Permits issued since 2000, including status and work performed.
Permitting Services	Retaining Wall Permits	Permits issued for the construction of a retaining wall
Permitting Services	Rockville Commercial Building Impact Taxes	Impact taxes for commercial permits in Rockville
Permitting Services	Rockville Residential Building Impact Taxes	Impact taxes for residential permits in Rockville
Permitting Services	Sediment Control Permits	Permits are issued to prevent sediment from leaving a construction site during construction activity.
Permitting Services	Sewage Disposal Permits	Permits are issued to ensure that any septic system installed in the County meets all current County and State standards.
Permitting Services	Sewage Sludge Utilization Licenses	Licenses are issued to any person or company engaged in the business of cleaning and emptying septic tanks, holding tanks, privies, or other sewage disposal facilities.
Permitting Services	Sign Permits	Permits issued for the installation of an exterior sign
Permitting Services	Sign variance	A sign variance is required when a proposed sign does not conform to the size or location requirements of the Montgomery County Zoning Ordinance.
Permitting Services	Site Specific Vendor's License	Licenses for vendors selling goods at a specific site
Permitting Services	Soil Testing Process	Percolation testing is the process of soil evaluation, including the establishment of infiltration rates for soils in an area intended for the installation of an initial septic system and replacement septic systems.

Permitting Services	Special Exception	Dataset to track DPS business processes related to Special Exceptions approved by the Board of Appeals
Permitting Services	Special Protection Area	A Special Protection Area (SPA) is a geographic area designated by the County Council with high-quality or unusually sensitive water resources and environmental features that would be threatened by proposed land development if special water quality protection measures are not applied. This dataset tracks development reviews in all SPAs.
Permitting Services	Stormwater Concept	A stormwater management concept is a statement, drawing, or both describing how stormwater runoff from a proposed development will be controlled to minimize damage to neighboring properties and receiving streams and prevent the discharge of pollutants into surface waters.
Permitting Services	USE & OCCUPANCY CERTIFICATES	Certificates issued for approval of the space to be used prior to opening any business in Montgomery County or inhabiting any residential dwelling
Police Department	Alcohol beverage violations	Bill 45 requires MCPD to publish Alcohol beverage violations
Police Department	Animal Services shelter information (Adoptable Pets)	This dataset contains a list of shelter animals that are ready to be adopted from the Montgomery County Animal Services and Adoption Center at 7315 Muncaster Mill Rd., Derwood, MD 20855. The 'How To Adopt' details are posted on https://www.montgomerycountymd.gov/animalservices/adoption/howtoadopt.html .
Police Department	Automated Red-Light Violations	Violations for running red lights at traffic signals captured by automated enforcement (red-light cameras).
Police Department	Automated School Bus Camera Violations	This data set contains data about violations for passing a school bus with red lights flashing, captured by automated enforcement (bus-arm cameras)
Police Department	Automated Speed Enforcement Violations	Speeding violations captured through automated enforcement (speed cameras).
Police Department	Community Policing	Police community events
Police Department	Crash - Drivers	For all crashes involving drivers, there is one record per driver.
Police Department	Crash - Incidents	All crashes, one record per incident.
Police Department	Crash - Non-Motorists	For all crashes involving non-motorists, there is one record per non-motorist.

Police Department	Crime Data	Information would include crime data, type, date/time, location, race, gender, and arrest information. It would not involve victim, suspect, or investigative report information.
Police Department	Crime Summary Reports	This is a Stacked Bar Chart showing the Monthly Cannabidiol related Crime incidents by Police District. The CBD Summary Report is a subset of the Crime dataset. It presents drug-related data by the MCPD Police District. The Crime dataset is gleaned for drug offenses to include categories of: Hallucinogen, Heroin, Opioid, Cocaine, Synthetic Narcotic, Narcotic Equipment, Marijuana, Amphetamine, Barbiturate., As described on the MCPD Crime dataset, these data contain only reported crimes. The information contained herein includes all reported crimes according to Uniform Crime Reporting (UCR) rules.
Police Department	Criminal Citations	Bill 45 requires us to publish Criminal citations, including trespassing.
Police Department	Daily Arrests	This dataset provides the public with arrest information from the Montgomery County Central Processing Unit (CPU) systems.
Police Department	Field Interview Reports	Bill 45 requires MCPD to publish Field Interview Reports
Police Department	Internal Affairs Allegations	Allegations brought to the attention of the Internal Affairs Division either through external complaints, internal complaints, or recognition.
Police Department	Juvenile Citations	Bill 45 requires us to publish Criminal Citations
Police Department	MCPD Bias Incidents	MCPD Bias Incidents
Police Department	Police 911 CAD calls for service	Daily 911 CAD calls
Police Department	Police Arrests	Bill 45 requires MCPD to publish data on individuals arrested by a police officer in Montgomery County, including whether the arrest location is within 500 feet of a school.
Police Department	Police Search Warrants	Bill 45 requires MCPD to publish data on individuals associated with search warrants for physical locations, including the use of SWAT and no-knock service.
Police Department	Police Service Calls Deemed Unfounded	Bill 45 requires MCPD to publish data on calls for service that are determined to be unfounded.
Police Department	Police Service Calls for Mental Health	Bill 45 requires MCPD to publish data on calls for service involving mental health.
Police Department	Police Service Calls for Substance Abuse	Bill 45 requires MCPD to publish data on calls for service involving substance abuse.

Police Department	Police Service Calls for the Homeless	Bill 45 requires MCPD to publish data on smoking marijuana in public places.
Police Department	Police Stay-Away Orders	Bill 45 requires MCPD to publish data on calls for service involving mental health.
Police Department	Police Weapon Pointing	Bill 45 requires MCPD to publish data on instances in which a police officer pointed a weapon or control device at a subject.
Police Department	Possession of Marijuana violations, under 10 grams	Bill 45 requires MCPD to publish data on possession of marijuana violations under 10 grams
Police Department	Smoking Marijuana in Public Places	Bill 45 requires MCPD to publish data on possession of marijuana violations under 10 grams.
Police Department	Traffic Violations	This dataset contains information on traffic violations from all electronic violations issued in the county. It will not publish any information that can be used to uniquely identify the vehicle, the vehicle owner, or the officer issuing the violation.
Police Department	Trespass Contracts	This dataset contains a list of properties where business owners, property managers, and other eligible entities have completed a form granting Montgomery County Police "Trespass Agency Authority". Pursuant to Maryland Criminal Law Section 6-403, Montgomery County Police Officers have the authority to issue trespass notifications on behalf of a property without a representative of that property signing the notification. Authority granted by each form is valid for one year. This dataset contains all locations with active and/or expired forms as of April 2021.
Police Department	Use of Force Incidents Details	This dataset contains detailed information on the Police Use of Force Incidents.
Police Department	Use of Force Incidents Overview	Bill 45 requires MCPD to publish Use of Force Incidents.
Procurement	Active Solicitations	Formal and informal open solicitation listings that are currently advertised
Procurement	Awarded Solicitations	Solicitations that resulted in a contract award
Procurement	Bid Tabulations	Newly opened Invitation for Bid (IFB) solicitations
Procurement	Closed Solicitations	Formal and informal closed solicitation listing
Procurement	Construction Contracts	Active County construction contract listing

Procurement	Contracts	The following dataset is a listing of all active County contracts. This list is updated daily.
Procurement	Living Wage Contracts	Active contracts with living wage requirement (prime & services other than construction contracts only)
Procurement	LSBRP Active Solicitations	Formal, informal, and open solicitation listings that are currently advertised for the Local Small Business Reserve Program (LSBRP)
Procurement	LSBRP Closed Solicitations	Formal and informal closed solicitation listing for the Local Small Business Reserve Program (LSBRP)
Procurement	LSBRP Contracts	Active County Contracts resulted from a Local Small Business Reserve Program (LSBRP)
Procurement	Non-Profit Contracts	Active County non-profit contract listing
Procurement	Prevailing Wage Contracts	Active contracts with prevailing wage requirement (prime & construction service only)
Procurement	PRO-Proposed Awardee List	This dataset provides a listing of the County's Proposed Awardees posted by the Office of Procurement.
Procurement	Solicitations	Listing of all active and closed Montgomery County solicitations issued in the past 7 years
Public Information Office	311 Requests	MC311 Requests
Public Information Office	Maryland Public Information Act (MPIA) Request Responses	Publishing responses to MPIA requests
Public Libraries	ACE GO! Kits circulation	Value is the total circulation of All Children Excel Go! Kits in the fiscal year
Public Libraries	All Children Excel Early Literacy Program attendance	Value of annual attendance at All Children Excel Early Literacy Programs that provide early literacy skills for children and caregivers
Public Libraries	All Children Excel Early Literacy Programs	Value for the annual number of programs held throughout MCPL that provide Early Literacy skills.
Public Libraries	Branch Facility Services are available	Identifies which branches have the following services and resources available: Wi-Fi access, mobile charging stations, collaboration rooms, Discovery Rooms, Makerspaces

Public Libraries	branch phone number	Phone number that the public can use to reach the branch
Public Libraries	Branch Scheduled hours of operation	Scheduled opening and closing times by day of the week for each branch
Public Libraries	Branch Special Lending Collections available	Identifies which branches have the following services and resources available: Go! Kits, eReaders, laptops
Public Libraries	Branch Technology Enterprise Business Solutions are available	Identifies which branches have the following services and resources available: Early Literacy and after-school computers, a Complement of Public Computers, and 3D printers
Public Libraries	Branch TTY phone number	When available, this dataset lists the TTY numbers (a special device that helps the hard-of-hearing or speech-impaired use the telephone to communicate) of branches.
Public Libraries	Building GSF	Gross square footage of each branch
Public Libraries	Bus Stops	Identifies which Ride On and Metrobuses are within walking distance of the branches
Public Libraries	Circulation of Juvenile Material	Value reflects the usage of physical materials in the "children's collection" as defined by the State and the Institute of Museum and Library Services.
Public Libraries	closest bike share	location of closest bike share bike rack (can be very far away)
Public Libraries	Closest Metro Stop	Identifies if there is a Metro station within walking distance
Public Libraries	e-books and e-audiobooks Checkout metrics	Value is the annual circulation of e-books and e-audiobooks by MCPL customers.
Public Libraries	Hours of All Children Excel Discovery Room use	Number of hours that the MCPL All Children Excel Discovery Rooms for Early Literacy and School Readiness were booked in the fiscal year
Public Libraries	In-House Use of Materials	Value is the number of items used by customers in our branches

Public Libraries	Items borrowed through the holds system	The total number of items processed for customer requests ("holds").
Public Libraries	Items borrowed through interlibrary loan	The total number of items borrowed from customers through the state network
Public Libraries	Librarian visits to schools and day care centers	Value is the total number of visits by librarians to schools and day care centers during the fiscal year
Public Libraries	Library electronic database usage	The value is the total number of items investigated in the MCPL databases. MCPL's metric is "Total Item Investigation," which demonstrates any action performed by the user in relation to a content item.
Public Libraries	Library Inventory	Library Inventory
Public Libraries	Logins to the WIFI	Value is the total number of WIFI sessions customers initiated
Public Libraries	Materials Usage Counts	Circulation of library materials by the entire system, by year
Public Libraries	MCPL Website homepage visits	Number of visits to the MCPL website by month.
Public Libraries	New library card registrations	Value is the total number of new library cards issued in the fiscal year
Public Libraries	Number of Onsite Computer Sessions	Value is the total number of sessions for all MCPL branches during the fiscal year.
Public Libraries	Number of STEM programs	Annual value for the total number of Science, Technology, Engineering, and Math programs hosted by MCPL.
Public Libraries	Pages printed or copied by customers	Value is the total number of pages printed or copied by MCPL customers in a fiscal year.
Public Libraries	Program Attendance for Adult Programs	Focus on age group categories (i.e., PreK, Children, Teens, Adults, Seniors) as defined by and reported to the Institute of Museum and Library Services.
Public Libraries	Senior program attendance	Focus on age group categories (i.e., PreK, Children, Teens, Adults, Seniors) as defined by and reported to the Institute of Museum and Library Services.
Public Libraries	Senior Smart trip for senior/disabled	The total number of discounted Senior Smart trip for senior/disabled Metrorail passes sold in the Fiscal year

	Metrorail passes sold	
Public Libraries	Sessions on AWE Early Literacy Digital Learning stations	Value is the total number of sessions on MCPL AWE Early Literacy and School Readiness computers
Public Libraries	STEM program attendance	Value of the annual number of attendants at a Science, Technology, Engineering, and Math skills-building program at MCPL
Public Libraries	Summer reading program (SRP) attendance	Value is the total attendance at SRP programs during the summer
Public Libraries	Summer reading program (SRP) programs are held	Value is the total number of SRP programs held during the summer
Public Libraries	Teen Programs Attendance	Focus on age group categories (i.e., PreK, Children, Teens, Adults, Seniors) as defined by and reported to the Institute of Museum and Library Services.
Public Libraries	Total Hours of Room Bookings	The total number of hours that MCPL study rooms were booked in the fiscal year, excluding CUPF rentals.
Public Libraries	Total Program Attendance	Focus on age group categories (i.e., PreK, Children, Teens, Adults, Seniors) as defined by and reported to the Institute of Museum and Library Services.
Public Libraries	Total Public Service Hours by Branch Libraries	Total hours open per month for the whole system
Public Libraries	Total Reference questions answered	The total number of reference questions answered.
Public Libraries	Total use of library materials	This dataset contains the total annual count of all MCPL materials, including in-house use, Interlibrary loan, holds, e-materials, song downloads, and materials checked out.
Public Libraries	Visits to branches	Value is the total number of people coming into all MCPL branches in the fiscal year.
Public Libraries	Visits to the MCPL Kids Page	The total number of visits to MCPL's Kids page.
Public Libraries	Volunteer hours	The total number of volunteer hours contributed to MCPL in the fiscal year.

Public Libraries	World Language Collection	Identifies which branches have collections in foreign languages
Recreation Department	2025 Recreation Spring Programs	2025 Recreation Spring Programs
Recreation Department	Fall Programs	2025 Recreation Fall Programs
Recreation Department	Open Gym Activities Fall	Recreation Fall Open Gym Activities
Recreation Department	Open Gym Activities Fall-update	Recreation Fall Open Gym Activity updates
Recreation Department	Open Gym Activities Spring	Recreation Spring Open Gym Activities
Recreation Department	Open Gym Activities Summer	Recreation Summer Open Gym Activities
Recreation Department	Open Gym Activities Summer	Recreation Summer Open Gym Activities
Recreation Department	Open Gym Activities Winter	Recreation Winter Open Gym Activities
Recreation Department	Spring Programs	Spring Programs
Recreation Department	Summer Camps	Summer Camps
Recreation Department	Summer Programs	Summer Programs
Recreation Department	Winter Programs	Winter Programs
Technology Enterprise Business Solutions	2012 Election Polling Places	Location of all 2012 Election Polling Places, including the Early Voting Centers.
Technology Enterprise Business Solutions	2014 Early Voting Centers	2014 Early Voting Centers
Technology Enterprise	2018 Polling Places	Election Precincts and Polling Place Map- Starting 2014

Business Solutions		
Technology Enterprise Business Solutions	2022 Polling Places with Election Precinct	Election Precincts and Polling Place Map- Starting 2014
Technology Enterprise Business Solutions	Bikeways	Bikeways
Technology Enterprise Business Solutions	Board of Education Districts	The 5 Board of Education Districts
Technology Enterprise Business Solutions	Building Footprints	The building footprints, including sheds
Technology Enterprise Business Solutions	Bus Stops, Metro Bus	WMATA Metro Bus Stops
Technology Enterprise Business Solutions	Business Parks	Business Parks
Technology Enterprise Business Solutions	Cable Complaints	This data set provides information on FY14 cable complaints reported to Montgomery County, MD, Cable Office.
Technology Enterprise Business Solutions	Cable Complaints	This data set provides information on FY23 cable complaints reported to Montgomery County, MD, Cable Office.
Technology Enterprise Business Solutions	Cable Inspections	This data set provides information on FY14 inspections performed by the Montgomery County Cable Office.
Technology Enterprise Business Solutions	Cable Inspections	This data set provides information on FY23 inspections performed by the Montgomery County Cable Office.

Technology Enterprise Business Solutions	Cable Office Speed Test	Results for public testing of ISP speeds
Technology Enterprise Business Solutions	Capital Bikeshare Stations	Map display of Capital Bikeshare locations
Technology Enterprise Business Solutions	Cemeteries	Cemeteries
Technology Enterprise Business Solutions	Census Block Group	The groupings of two or more Census Blocks
Technology Enterprise Business Solutions	Census Blocks	The most basic population tabulation unit, typically corresponding to a city block.
Technology Enterprise Business Solutions	Census Tracts	The US Census Bureau defined a population tabulation unit as roughly 6000 residents to a Tract.
Technology Enterprise Business Solutions	Colleges & Universities	Colleges & Universities
Technology Enterprise Business Solutions	Congressional Districts in Montgomery County	Congressional Districts in Montgomery County
Technology Enterprise Business Solutions	Councilmember Districts	The 7 Councilmember Districts of the County
Technology Enterprise Business Solutions	County Boundary	County Boundary
Technology Enterprise	County Wi-Fi Locations	Wireless Access Points around the County

Business Solutions		
Technology Enterprise Business Solutions	Election Polling Places - 2012	Geographic data: locations of election polling places for the 2012 election
Technology Enterprise Business Solutions	Enterprise Zones	Enterprise Zones
Technology Enterprise Business Solutions	Fibernet building connections	Buildings connected to Fibernet
Technology Enterprise Business Solutions	Fire Hydrants	Sources: WSSC, City of Rockville. Extensive QC by MCFRS
Technology Enterprise Business Solutions	Fire Station Areas	Fire Station Areas
Technology Enterprise Business Solutions	Fire Stations	Address and Locations for all Fire Stations in Montgomery County, MD.
Technology Enterprise Business Solutions	Geographic data: Zip Codes (Shape File)	This dataset contains all zip codes in Montgomery County. Zip codes are the postal delivery areas defined by USPS. Zip codes with mailboxes only are not included.
Technology Enterprise Business Solutions	Geographic data: Health & Human Services (HHS) Facilities	Address and locations for Health & Human Services (HHS) Facilities in Montgomery County, MD.
Technology Enterprise Business Solutions	Geographic data: Library locations	Locations of all Montgomery County, MD, Public Libraries.
Technology Enterprise Business Solutions	Geographic data: Post Offices	Address and Locations for Post Offices in Montgomery County, MD.

Technology Enterprise Business Solutions	GIS Service Portfolio and Service Catalog	Inventory of GIS Applications
Technology Enterprise Business Solutions	Golf Courses	The nine public golf courses
Technology Enterprise Business Solutions	Health & Human Services (HHS) Facilities	Address and locations for Health & Human Services (HHS) Facilities in Montgomery County, MD.
Technology Enterprise Business Solutions	Hospital Locations	Address and Locations for Hospitals in Montgomery County, MD, and the immediate vicinity.
Technology Enterprise Business Solutions	Hospitals	Address and Locations for Hospitals in Montgomery County, MD, and the immediate vicinity.
Technology Enterprise Business Solutions	Inventory of created Cable Content/Programs	Inventory of created Cable Content/Programs
Technology Enterprise Business Solutions	Inventory of DCM-supplied mobile devices.	This dataset contains a list of the MCG Inventory of DCM-supplied iPads and Laptops by department; it contains the type of each machine, CPU speed, age, etc.
Technology Enterprise Business Solutions	Inventory of DCM-supplied Seat Machine devices	This dataset contains a list of the MCG Inventory of DCM supplied seat machine devices.
Technology Enterprise Business Solutions	Inventory of Portal Sites	Inventory of Portal Sites
Technology Enterprise Business Solutions	Legislative Districts in Montgomery County	Legislative Districts in Montgomery County
Technology Enterprise	Libraries	Locations of all Montgomery County, MD, Public Libraries.

Business Solutions		
Technology Enterprise Business Solutions	Liquor Stores	Liquor Stores
Technology Enterprise Business Solutions	Lodging	Lodging
Technology Enterprise Business Solutions	MARC Train Stations	MARC Train Stations
Technology Enterprise Business Solutions	MC Government Facilities	MC Government Facilities
Technology Enterprise Business Solutions	MCG HelpIT Tickets	IT Help Desk Tickets
Technology Enterprise Business Solutions	METRO Rail Lines	WMATA Metro rail lines
Technology Enterprise Business Solutions	Metro Stations	Metro Stations
Technology Enterprise Business Solutions	Municipalities	All Incorporated Places in MC
Technology Enterprise Business Solutions	Neighborhoods	Neighborhoods
Technology Enterprise Business Solutions	Neighborhoods	MC is divided into 60+ neighborhoods. 10 years ago, RSC directors and Police representatives. Not officially blessed.

Technology Enterprise Business Solutions	Park and Ride Lots	FY15 Park and Ride Lots Map
Technology Enterprise Business Solutions	Park and Ride Lots	FY16 updated Park and Ride Lots Map
Technology Enterprise Business Solutions	Parking Districts	Parking Districts
Technology Enterprise Business Solutions	Parking Lots	Parking Lots
Technology Enterprise Business Solutions	Places of Worship	Places of Worship
Technology Enterprise Business Solutions	Police Beats	Police Beats
Technology Enterprise Business Solutions	Police Districts	The 6 Police Districts
Technology Enterprise Business Solutions	Police Reporting Areas	Police Reporting Areas
Technology Enterprise Business Solutions	Police Stations	The 6 Police Stations
Technology Enterprise Business Solutions	Post Offices	Address and Locations for Post Offices in Montgomery County, MD.
Technology Enterprise	Private Schools	Private Schools

Business Solutions		
Technology Enterprise Business Solutions	Public Schools	Address and Locations of all Public Schools in Montgomery County, MD.
Technology Enterprise Business Solutions	Rail Lines	Freight and commuter rail line
Technology Enterprise Business Solutions	Recreation Areas	Recreation Areas
Technology Enterprise Business Solutions	Recreation Centers	Recreation Centers
Technology Enterprise Business Solutions	Regional Services Centers	Regional Services Centers Map
Technology Enterprise Business Solutions	Regional Services Regions	The 5 Regional Services areas of the County
Technology Enterprise Business Solutions	Seat Machine Inventory	Seat machine inventory by department; contains type of each machine, CPU speed, age, OS level, etc.
Technology Enterprise Business Solutions	Senior Centers	Senior Centers
Technology Enterprise Business Solutions	SharePoint sites supported	Inventory of SharePoint sites supported
Technology Enterprise Business Solutions	Shopping Centers	Shopping Centers

Technology Enterprise Business Solutions	Software Patches	Inventory of supplied seat machine patches
Technology Enterprise Business Solutions	Street Centerlines	Single-line representation of County roadways with hundred-blocks & various service area IDs
Technology Enterprise Business Solutions	Swimming Pools, Public	Swimming Pools, Public
Technology Enterprise Business Solutions	Transmission Facilities Application Status & Location	Information on all transmission facility applications (new tower or attachments) filed with the Montgomery County Cable Office for telecommunications and radio & TV transmission sites, including the tower's location and the application's disposition.
Technology Enterprise Business Solutions	Urban Districts	Urban Districts
Technology Enterprise Business Solutions	WSSC Map Grids	WSSC Map Grids
Technology Enterprise Business Solutions	YMCA	YMCA
Technology Enterprise Business Solutions	Zip Codes (Map Service)	This dataset contains all zip codes in Montgomery County. Zip codes are the postal delivery areas defined by USPS. Zip codes with mailboxes only are not included.
Transportation	Bus Routes	Routes, schedules, fares
Transportation	DOT CIP Road Construction Projects	DOT uses a database application to track high-level progress on road planning and construction projects. We want to 1) make this information available publicly and 2) use this information to construct a formatted report to be published on our website.
Transportation	DOT Correspondenc e Log	DOT log of contact with the public in the form of email, letters, and referrals from the Council and the CEO's office

Transportation	Emergency Routes	DOT Emergency routes
Transportation	Parking Garage and Lot Locations	Parking space inventory information for Montgomery County Public Parking Facilities
Transportation	Parking Garage Space Availability	This is "Real-time" parking space availability for Montgomery County Public Parking Facilities. The data includes only facilities equipped with automated vehicle counting systems.
Transportation	Parking Rates	Rates and statistics data
Transportation	Parking Tickets	Data on parking tickets
Transportation	Parking Tickets	Data on parking tickets
Transportation	Pavement Condition Index (PCI)	Pavement Condition Index (PCI)/
Transportation	Pavement Condition Index (PCI)	Pavement Condition Index (PCI)/
Transportation	Ride on Service Delays/Issues	Ride on delays, service interruptions, etc.
Transportation	Road closures during storms, with the reasons for the closures and the status	Provide county residents with information concerning road closures throughout the county.
Transportation	Schedule of Leaf Collection	Provide county residents with scheduled leaf collection per area and subarea.

Appendix B: Initial Dataset Inventory Process

Montgomery County has 42 Executive Branch departments, offices, and agencies, which collectively employ more than 600 applications, databases, and spreadsheets from which “data” may be derived. Early efforts to collect datasets for inclusion on the open data platform included surveying departments on what they considered to be high-value data and researching what information was requested most often by residents and the press via formal Maryland Public Information Act (MPIA) solicitations.

However, to comply with the Open Data Act’s requirement for a complete inventory of government data, Montgomery County needed to develop a systematic approach to identifying, inventorying, prioritizing, and queuing datasets for publication.

Each County department was asked to identify a Point of Contact (POC) with whom the dataMontgomery Workgroup would interface. One POC was identified per department and assigned the responsibility of compiling the dataset inventory for their department. The team invested in each POC, educating them on open data concepts, joint data sharing, and sensitive/confidential data awareness through webinars and office hours. POCs could be either technical or business people who own the data being proposed for publication. Monthly meetings were held with all POCs to review expectations, answer questions, demonstrate the value of open data, and educate them on different aspects of confidential and sensitive data. Once the POCs were established, a team was put together to assist them with their inventorying efforts. This team was comprised of CountyStat performance experts, the dataMontgomery project manager, a dataMontgomery project lead, and the Chief Innovation Officer.

CountyStat hosted individual brainstorming sessions with each department, and sometimes individual divisions within larger departments, to draw out a list of dataset candidates. POCs were encouraged to bring others from their department (if technical, bring a businessperson, and vice versa). These brainstorming sessions used the following as jump-off points for discussion:

- The department’s website (the core mission of the department, plus any reports or information posted there)
- The department’s annual performance plan document that lists its Headline Performance Measures and other data
- Any existing inventory of systems, applications, databases, etc.
- The existing dataMontgomery web portal; and
- The open data web portals of other governments.

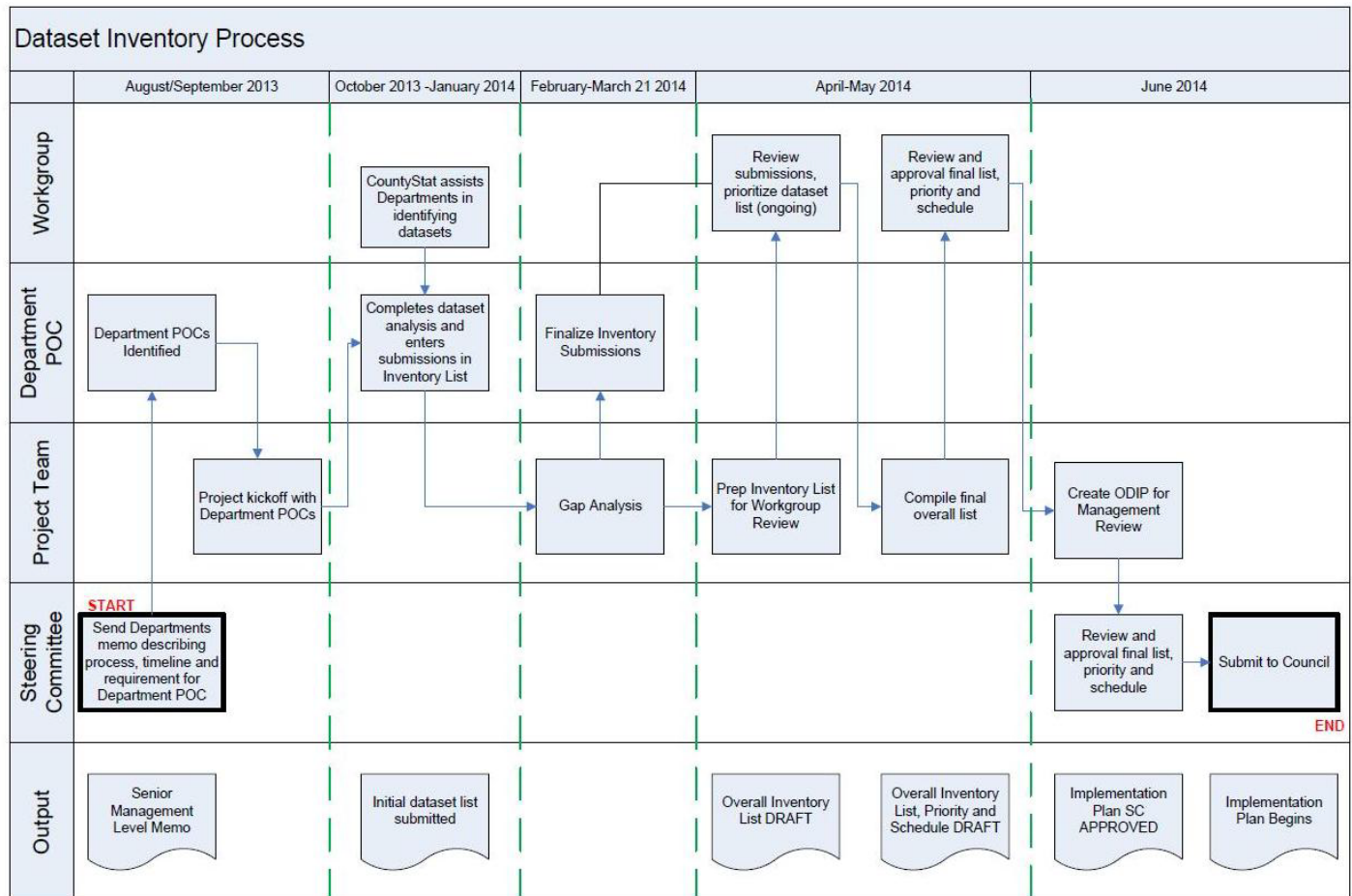
The outputs of these brainstorming sessions were captured and fed back to departments to stimulate further data exploration within their operational groups.

To facilitate the collection of dataset candidates, TEBS created an online intake form for departments to submit the dataset candidates developed based on the brainstorming sessions and subsequent internal work. Initially, this form yielded over 300 dataset submissions. A Gap Analysis was performed comparing submissions with the department’s core function, systems, and performance measures. After being notified of the Gap Analysis and follow-up meetings with team members, departments submitted additional datasets. To date, over 740 datasets have been submitted for consideration.

At the same time as this internal view of data inventory was occurring, Montgomery County also looked externally at our residents. Community outreach events were conducted where residents could engage in conversations with County staff regarding the datasets that interested them and the potential ways they could put the data to use. In promoting these Town Hall events, presentations were made at many high schools to help engage youth in the process. The feedback from these town halls was captured and reported out in the County’s Innovation Program blog as well as on Twitter. Additionally, some subject matter-specific workshops

were held on key topics, such as public safety and transit. For example, multiple Neighborhood Watch groups and representatives from MCPD met to discuss crime data priorities. This feedback was captured and made part of the prioritization process.

The Dataset Inventory Process and timeline are summarized in the table below.



Appendix C: dataMontgomery Inventory for Fiscal Year 2026

The table below lists all datasets planned to be published in FY26. This table of information is published as a [dataset](#) on the dataMontgomery website.

*Department	*Dataset Name	*Description
Agriculture	Annual Farm Tours 2026	local farms and participating residents to indulge in seasonally fresh food.
Board of Elections	Presidential General Election Results	2024 Presidential General Election Results by Precinct
Board of Elections	Gubernatorial General Election Results	2026 Gubernatorial General Election Results by Precinct
County Attorney	Debt Collection Monthly Report	Collection revenue for the last three fiscal years
Environmental Protection	2024 energy benchmarking of all sites	The Energy Benchmarking Law requires the County to make annually reported energy benchmarking information readily available to the public. This dataset reflects data received by the publication date. It does not include individually attributable data for buildings in Groups 3 and 4, as CY 2022 was the first year that these buildings were required to report to DEP.
Environmental Protection	DEP- Levy Year 2025 Solid Waste Charges	This dataset contains data on MCG DEP Levy Year 2024 Solid Waste Charges. Additional details about the solid waste charges, refund options, and other specific situations are available on the webpage dedicated to the solid waste charges: https://www.montgomerycountymd.gov/sws/swc/
Finance	Real Property Tax Rates - 2025	Real property tax rate for 2024
Finance	Small Business Innovation Research and Small Business Technology Transfer Matching Grant Program	Grants provide financial assistance to life sciences employers to retain jobs and stimulate the organic growth of the life sciences industry.
Finance	Business Personal Property - 2026	Business Name and Address
Finance	Economic Development Fund Grant and Loan Program	Economic Development Fund Awards
Finance	Risk Management Corvel Injury Data FY25	Risk Management Corvel Injury Data
Health & Human Services	Food Inspection – July 2024 and on	This dataset includes food inspection results for non-mobile food establishments in Montgomery County that have an active license.
Human Resources	Separation, Retirement, and Termination Report	Report the number of county separations by reason.

Human Resources	Employee Salaries -2025	Salary information for all active, permanent employees of Montgomery County, MD, as of January 15, 2013. This data will be updated annually.
Legislative Branch	Montgomery County Office of the Inspector General Annual Reports	Montgomery County Office of the Inspector General Annual Reports
Management & Budget	FY26 OMB Approved Revenue	The dataset details all revenue by agency, fund type, and fund. The revenue schedules include data for the following County agencies: MCG, Debt Service, MCPS, Montgomery College, and M-NCPPC. Not included are: WSSC, HOC, and the Montgomery County Revenue Authority.
Management & Budget	FY27 OMB Recommended Revenue	This dataset includes the County Executive's recommended operating budget revenues for Montgomery County. The data can be sorted, filtered, and exported by the following elements: Service, Fund Type, Item Category, Fund, and Description.
Management & Budget	FY27 OMB Recommended Expenditure	This dataset includes the Fiscal Year* 2023 County Executive Recommended operating budgets for Montgomery County. The data can be sorted, filtered, and exported by the following elements: Function (grouping, such as "Public Safety"), Department, Program, Cost Center (activity within a program), Fund Type, Subfund Name, Expense Type, Recommended Amount, and Account Name. The Montgomery County fiscal year starts on July 1st and ends on June 30th.
Management & Budget	FY26 OMB - Approved Revenue for Capital Budget Projects	This dataset includes the County Council-approved capital funding for the projects for the recent fiscal years.
Management & Budget	FY26 Approved Operating Expenditure	This dataset includes the County Council-approved operating budget expenditures for Montgomery County. The data can be sorted, filtered, and exported by the following elements: Service, Department, Program, Cost Center (activity within a program), Fund Type, Expense Category, Subfund Name, Expense Type, and Account Name.
Management & Budget	FY26 OMB - Approved Capital Budget Projects	This dataset includes the County Council Approved Capital Budget, which covers larger long-term investments in facilities and infrastructure, or Capital Projects. Examples include the construction of public schools, libraries, street maintenance, and park improvements.
Management & Budget	FY26 OMB - Approved Expenditures for Capital Budget Projects	This dataset includes the County Council-approved capital expenditures for the projects for the recent fiscal years.
Office of Animal Services	Animal Wellness	Animal Wellness (Vaccination, Spays and Neuters, etc.)
Office of Animal Services	Animal Intake	This dataset contains information regarding the OAS intake data and process. OAS is an open-admission municipal shelter serving Montgomery County. It takes in lost, abandoned, and surrendered pets as well as injured/ill wildlife.
Office of Animal Services	Animal outcome	Animal outcome
Office of Animal Services	Impound pathways	Impound pathways
Office of Animal Services	Live release rate	Animal Live release rate
Office of Animal Services	Shelter Pathways	Shelter Pathways
Office of Animal Services	Community partners	Animal Services Community partners

Permitting Services	Commercial Solar Panel permits	Solar Panels Permits for the commercial properties
Permitting Services	Residential Solar Panel permits	Solar Panels permits for residential properties
Police Department	SWAT	Bill 45 requires MCPD to publish data on SWAT.
Police Department	Search incident to arrest	Bill 45 requires MCPD to publish Use of Force Incidents.
Police Department	Consent Searches	Bill 45 requires MCPD to publish data on instances of a consent search conducted by an MCP officer on an individual subject.
Public Information Office	eSubscription Analytics	GovDelivery (County newsletter development tool) usage
Public Libraries	Visits by schools and day care centers to branches	Value is the total number of visits to the library by outside educational groups in the fiscal year
Recreation Department	2025 Recreation Fall/Winter Programs	2025 Fall/Winter Programs
Recreation Department	2026 Recreation Spring Programs	2026 Spring Programs

Appendix D: dataMontgomery Inventory for FY27 and Beyond

The prior sections of this document detailed the datasets already available on the dataMontgomery website and the datasets scheduled for publication in the coming fiscal year. The remaining datasets identified in the dataset inventory process are detailed in the table below. Based on their priority rankings, these datasets are scheduled for publication in Fiscal Year 2027 or later.

Datasets in the lowest priority categories will be evaluated to ensure the resources expended to publish them are justified before they are scheduled for publication. It is expected that not all datasets will be published.

The department and dataset names are sorted in the table below. The complete inventory of datasets is published on the dataMontgomery website.

*Department	*Dataset Name	*Description
Board of Elections	General Ballot Question, Early, Election Day, and Absentee Results	General Election Ballot Question Early, Election Day, and Absentee Results
Board of Elections	General Ballot Question Results by Precinct	Ballot Question Results by Precinct
Board of Elections	Voter registration transaction data	Voter registration transaction data as generated from MDVOTERS Monthly Statistical Reports
Board of Elections	Voter Registration Data	Data from the state MDVOTERS system
Board of Elections	Street address file from MDVOTERS	Street address file maintained for polling place lookup purposes
Board of Elections	Information about Election Judges	Information about Election Judges, such as demographic information, number assigned, and languages spoken.
Board of Elections	General Election Early, Election Day, and Absentee Results	This file contains complete election results as certified, including early and absentee votes as well as Election Day.
Board of Elections	BOE-EMS (Election Management System)	Polling Place and Poll Worker Management System
Board of Elections	BOE-IVR	Interactive Voice Response System
Board of Elections	Data on provisional ballots.	Acceptance and rejection reasons for provisional ballots.
Board of Elections	Election Judge training classes	Election Judge training class information
Board of Elections	Election Technical Support Volunteer Registration System (ETSVRS)	Election Technical Support Volunteer Registration System (ETSVRS)
Board of Elections	Electrak	Candidate filing information from the state system
Community Engagement Cluster	Commission for Women	Status of Women in Montgomery
Community Engagement Cluster	Commission for Women	Report on Single Mothers and Poverty

Community Engagement Cluster	Silver Spring Regional Center	Citizen Advisory Board Annual Report
Community Engagement Cluster	Sidney Kramer Upcountry Regional Services Center	Upcountry Citizens Advisory Boards FY2013 Annual Report
Community Engagement Cluster	Bethesda-Chevy Chase Regional Services Center - Annual Report	Annual Reports
Community Engagement Cluster	Office of Community Partnerships	Gilchrist Centers Locations, Hours of Operation, Programs and Services.
Community Engagement Cluster	MidCounty Regional Center	Advisory Boards and Committees
Community Engagement Cluster	East County Regional Service Center	Eastern Montgomery Region Map
Community Engagement Cluster	East County Regional Service Center	ECCAB Reports
Community Engagement Cluster	Commission for Women Annual Report of Women's Legislative Briefing	CFW Annual Report
County Executive's Office	County Executive Event Requests	Requests for CE participation in events
County Executive's Office	County Executive Correspondence	This dataset includes a list of written and electronic correspondence received by the County Executive from external sources since 2006.
County Executive's Office	Innovation Programs	Status of innovation projects
Employee Retirement Plans	Employees' Retirement System (ERS) expenses	Employees' Retirement System (ERS) expenses
Employee Retirement Plans	Employees' Retirement System (ERS) contributions	Employees' Retirement System (ERS) contributions
Environmental Protection	Tonnage Revenue Reconciliation	The tonnage/revenue reconciliation verifies the proper recording of tons and revenue between the Transfer Station software system (Paradigm) and the Montgomery County general ledger (Oracle) by month and year-to-date.
Environmental Protection	Flood Sensor Data	Flood Sensor Data
Finance	Sick Leave Balance Report	Sick Leave Balance Report
Finance	List of Work Hours by Bargaining Unit	List of hours worked by fiscal year by bargaining unit
Finance	Payment collected by the property tax bill	Payment collected by the property tax bill
Finance	Sick Leave Use by Union	List of sick leave used by the bargaining unit

General Services	Facilities - Maintenance Cost	Facility maintenance cost
General Services	Facility Inventory	Listing of county-maintained facilities
General Services	Record Management Inventory	Number of records in the record management system by the Department
General Services	Apparatus Fuel Usage	data on the usage of fuel by the department's fire apparatus
General Services	Facilities - Generators	Facilities with generators
General Services	Facilities - Property Managers and Areas	Property management areas and assigned managers
General Services	Facilities - Work Orders	Facilities Work Order Status
Health & Human Services	Temporary Cash Assistance Caseloads	Historical average caseloads
Health & Human Services	Short Term Residential Licensing	This list is subject to change.
Human Resources	County Employee List	County Employee List
Human Resources	FMLA Requests by Request Type	FMLA requests by reason: family/self/domestic partner
Human Resources	Separation and Termination Report	Report the number of county separations by reason.
Human Resources	Hiring Preference Report	Number of vacancies, # of applicants/employees claiming hiring preference, and the rating of those employees/applicants
Human Resources	Local Government Personnel Association (LGPA) Report	Data compiled for the county's annual submission to LGPA includes demographics, salary, hours, years to reach maximum salary, etc.
Human Resources	Maryland Association of Counties (MACo) Report	Compilation of data, including job title, grade, min/max salary, number of employees in a class, average base salary
Human Resources	Maryland Association of Counties (MACo) Report	Compilation of data, including job title, grade, min/max salary, number of employees in a class, average base salary
Human Resources	Non-Competitive Hiring List	Master list of the number of Disability Employment Initiatives, Non-Competitive Hiring Process Hires
Human Resources	OMS/FROMS Visit Types	Tracks visits to OMS/FROMS by reason for contact
Human Resources	RIF Tracking Reports	Tracks positions abolished and employees affected by Reduction in Force (RIF) during a budget cycle.
Human Resources	Total number of Long-Term Disability LTD 1 and LTD 2 Subscribers	Active employees with LTD 1 and LTD 2 coverage
Human Resources	Wage Equity	Master list of demographic descriptions, including measures of years of relevant experience in current position
Human Rights	Complaints received	Human Rights Complaints received

Human Rights	Customer satisfaction survey	Customer Satisfaction Survey of the Human Rights Commission
Labor Relations	Labor/Employee Relations Actions	Types of Labor Relations Claims
Labor Relations	Grievances Resolved Before Reaching a Third-Party Neutral	Total number of grievances and those resolved before reaching a third-party neutral
Legislative Branch	Z &OH Other Cases referred by Agencies of the County Decisions	Z &OH Other Cases referred by Agencies of the County Decisions
Legislative Branch	Z &OH Other Cases referred by Agencies of the County Transcripts	Z &OH Other Cases referred by Agencies of the County Transcripts
Legislative Branch	Z &OH Zoning Council Actions	Z &OH Zoning Council Actions
Legislative Branch	Z &OH Zoning Case Transcripts	Z &OH Zoning Case Transcripts
Legislative Branch	Z &OH Special Exception and Condition Use Cases Transcripts	Z &OH Special Exception and Condition Use Cases Transcripts
Legislative Branch	Office of the Inspector General - Office Policy Manual	Office of the Inspector General - Office Policy Manual
Legislative Branch	OLO Reports	OLO Reports
Legislative Branch	Z &OH Applications and Hearing Notices	Z &OH Applications and Hearing Notices
Legislative Branch	Z &OH Hearing Examiner Reports for Special Exception and Condition Use Cases and Reports	Z &OH Hearing Examiner Reports for Special Exception and Condition Use Cases and Reports
Legislative Branch	Montgomery County Council Packets/Memos for Council and Committee	Council Packet/Memos
Legislative Branch	Montgomery County Council Public Testimony	Public Testimony is an effective way to help legislators understand how an issue, policy, or situation affects people across the state, presents difficulties, or addresses needs. Public testimony also gives you the opportunity to show your support for what is being considered by the legislature. This dataset contains written public testimony submitted to the Council.
Legislative Branch	Office of the Inspector General - Manual for Audits and Investigations	Office of the Inspector General - Manual for Audits and Investigations
Legislative Branch	Office of Zoning and Hearing Administration	Office of Zoning and Hearing Administration Zoning Cases and Reports

	Zoning Cases and Reports	
Legislative Branch	Board of Appeals Work Session Agenda	Board of Appeals Work Session Agenda
Legislative Branch	Board of Appeals Work Session Minutes	Board of Appeals Work Session Minutes
Legislative Branch	County Council County Attorney Opinions and Advice of Counsel	County Attorney Opinions and Advice of Counsel
Legislative Branch	County Council Montgomery County Council Agendas	Council Agendas
Legislative Branch	County Council Operating and Capital Budget Supplemental and Special Appropriations	Supplemental and Special Appropriations to Operating and Capital Budget Approved by Council Resolution
Legislative Branch	Montgomery County Council Committee Agendas	Council Committee Agendas
Legislative Branch	Montgomery County Council Contact Information	Includes Councilmember and County Council Staff address, email, telephone, fax, web, Committee Assignment, and party
Permitting Services	Commercial Solar Panel	Solar Panels on the commercial properties
Police Department	Pepco's Right-of-way complaints/incidents	Calls/Complaints that MCPD has received concerning illegal trespass, suspicious, and/or dangerous activities in the Pepco right-of-way between Westlake Drive in West Bethesda and Piney Meetinghouse Road in Potomac during the past 5 years
Public Information Office	County Website Analytics	County Website Analytics
Public Information Office	Social Media Analytics	Facebook
Technology Enterprise Business Solutions	Inventory of Radio Towers used by the County	Inventory of Radio Towers used by the County
Technology Enterprise Business Solutions	Inventory of telephone lines/numbers	Inventory of telephone lines/numbers
Technology Enterprise Business Solutions	Mobile Application Inventory	Inventory of Enterprise provided mobile applications
Technology Enterprise Business Solutions	Number of Potential Negative Information Security Events Against the County	Number of Potential Negative Information Security Events Against the County

Technology Enterprise Business Solutions	Printer Support Inventory	Inventory of Printers supported on the Enterprise Print Server
Technology Enterprise Business Solutions	Radio Inventory	Radio Inventory
Technology Enterprise Business Solutions	DHI inventory of Enterprise Databases	DHI inventory of Enterprise Databases
Technology Enterprise Business Solutions	Identity Management Inventory of objects and applications using IM	Inventory of Identity Management Objects
Technology Enterprise Business Solutions	Inventory of Departments using Enterprise File Service	Inventory of Departments using Enterprise File Service
Technology Enterprise Business Solutions	Inventory of EHI Applications	Inventory of EHI Applications
Technology Enterprise Business Solutions	Inventory of MCCATS (Montgomery County Consulting and Technical Services) Task Orders	Inventory of MCCATS (Montgomery County Consulting and Technical Services) Task Orders
Technology Enterprise Business Solutions	Inventory of Records Applications	Inventory of Records Applications
Technology Enterprise Business Solutions	Inventory of Servers backed up by the data center	Inventory of Servers backed up by the data center
Technology Enterprise Business Solutions	Inventory of Servers Hosted in the Datacenter	Inventory of Servers Hosted in the Datacenter
Technology Enterprise Business Solutions	Inventory of Service Catalog Requests	Inventory of Service Catalog Requests
Technology Enterprise Business Solutions	Inventory of telephones	Inventory of telephones and numbers
Technology Enterprise Business Solutions	Email Inventory	Inventory of Email accounts
Technology Enterprise	Inventory of IT Review Requests	Inventory of IT Review Requests

Business Solutions		
Technology Enterprise Business Solutions	Inventory of Enterprise-Supported SAAS Applications	Inventory of Enterprise Supported SAAS applications
Technology Enterprise Business Solutions	Inventory of Enterprise Managed Public Safety Servers	Inventory of Enterprise Managed Public Safety Servers
Technology Enterprise Business Solutions	Deployment Domain Inventory	Inventory of VMGuests/VMHosts (VM Virtual Machine)
Transportation	SRTS-Related Citations	Number of Citations Given by MCPD Around Safe Routes to School Grant Schools
Transportation	Speed Data	DOT maintains a database for all roadway speed studies performed
Transportation	Sidewalk/Concrete Schedule	Sidewalk/Concrete Schedule
Transportation	Schools Under the Safe Routes to School Grant Program	Grant program data
Transportation	Storm operations map	Provide county residents with progress concerning summer and winter storm activity.
Transportation	Traffic Count Data	DOT maintains a database for all intersections where traffic volume counts have been performed
Transportation	Bus Routes/Schedules	Routes, schedules, fares
Transportation	Adopt A Road	Program for keeping roadsides clean
Transportation	Carpool Data	Data on carpooling from Commuter Services
Transportation	Safe Routes to School Grant School Survey Data	Survey data
Transportation	Data sharing with WSSC Resurfacing and Utility Projects	Future roadways resurfacing project and moratorium data
Transportation	Storm Drain Marking Program	Mark storm drains to keep them from getting hit
Transportation	Residential Sweeping	Residential Sweeping
Transportation	Planned Neighborhood Tree Pruning	Planned Neighborhood Tree Pruning

Appendix E: Datasets Currently Unpublishable

The table below identifies datasets that are unpublishable or duplicate entries. Datasets are deemed unpublishable due to personal identifying information, private information such as HIPAA, medical information, and other factors such as sensitive or confidential data. Two hundred sixty-four datasets have been identified as unpublishable or duplicates. The searchable dataset can be found [here](#).

Department	Dataset Name	Description	Reason Code
Alcohol Beverage Services	Product Licensee Purchases	Purchases in case units of items by the licensee	Contains sensitive data
Board of Elections	Voting equipment and materials inventory	Voting equipment and materials data	Data not collected/automated
Community Engagement Cluster	Bethesda-Chevy Chase Regional Services Center Calendar of events	Calendar of Events	Unpublishable Format
Consumer Protection	Civil Citation Tracking	An Excel spreadsheet tracking the outcome of OCP-issued citations.	Contains sensitive data
Consumer Protection	Commission on Common Ownership Communities (CCOC) Decisions	Decision summaries of Commission on Common Ownership Communities (CCOC) cases.	Contains sensitive data
Consumer Protection	Consumer Complaint Database	This is a database for consumer complaints. It includes complainant information, merchant information, case identifiers, and other information. All consumer complaints are captured here. It also contains complaints for common ownership communities and mediation stand-alone cases.	Contains sensitive data
Consumer Protection	Information Data	An intranet-based system to capture all telephone, walk-in, and email inquiries to OCP. Includes the caller's name and contact information, reason for the contact, and description.	Data not collected
Consumer Protection	OCP Volunteer Depot	Database used to record volunteers' personal information, assignments, office information, skills, emergency contacts, and volunteer hours.	Duplicate
Consumer Protection	Patient Advocacy Database	Database maintained for the EMS Transport Insurance Reimbursement Patient Advocate program. Contains HIPAA-sensitive inquiries regarding the program.	Contains sensitive data
Consumer Protection	Settlement Agreements	OCP settlement agreements are primarily in paper form.	Duplicate
Correction and Rehabilitation	Alcohol class schedule	This calendar of classes is published on the DOCR website and can be published on the dataMontgomery website.	Unpublishable format
Correction and Rehabilitation	Alternate Community Services (ACS) data	The names and number of hours that are given to community service organizations under the ACS program can be published.	Duplicate
Correction and Rehabilitation	Diversion programming	The Pre-Trial Unit provides diversion programming, which will be included in the Average daily population data set.	Duplicate
Correction and Rehabilitation	GIS Contour data	GIS Contour data	Internal use only

Correction and Rehabilitation	In Custody Search	web-based search by name for "in custody"	Internal use only
Correction and Rehabilitation	Inmate programming	This data is tracked manually until the department implements a JMS. It would not be easy to collect it for publication.	Unpublishable Format
Correction and Rehabilitation	Inmate visiting hours/number of visitors	Inmate visiting hours and rules are published on the DOCR website, and this data could be linked to the data on the dataMontgomery website. A few visitors and any visitor details are sensitive information and are a security risk to publish for public view.	Data not collected
Correction and Rehabilitation	Monthly jail inspection data	The department uses an automated system to perform shift inspections—3 shifts per 24-hour period—and recreates a shift report. This is internal data that would be a security violation to publish for public view.	Contains sensitive data
Correction and Rehabilitation	Number of prisoners experiencing mental health issues	This is HIPAA-sensitive data that is used by the department's medical staff and HHS partners	Contains sensitive data
Correction and Rehabilitation	Number of PREA allegations and number of PREA substantiated cases	PREA is the Prison Rape Elimination Act and data that is tracked under this Act is sensitive to public viewing	Contains sensitive data
Correction and Rehabilitation	Volunteer opportunities	Volunteer information is published on the DOCR website. It describes the process of volunteering. Specific volunteer jobs are not listed since this is very fluid information and is not set up like job opportunities. The volunteer coordinator's contact information is on the website, and volunteers are encouraged to contact this staff person if they are interested in volunteering.	Unpublishable format
Correction and Rehabilitation	Yearly Average Length of Stay	The department implemented a new criminal justice case management system (CJCMS) to replace the functions that the mainframe CJIS provided. The new system is currently reviewing the yearly average length of stay data. Once the data has been fully vetted, it can be published on dataMontgomery.	Data not collected
County Attorney	Case status for open and closed cases	List case status by date, type, and department	Duplicate
County Attorney	Child and Adult Services caseloads	Status and caseloads of Child and Adult Protective Services	Duplicate
County Attorney	Debt Collection Monthly Report	Collection revenue for the last three fiscal years	Duplicate
County Attorney	Executive Regulations	This dataset includes a list of all Executive Regulations	Duplicate
County Attorney	Workers' Compensation monthly hearings	Monthly hearings comparison	Duplicate
County Executive's Office	Boards, Committees, and Commissions	Appointments made to Boards, Committees, and Commissions (BCCs) by the County Executive, with confirmation by the County Council.	Contains sensitive data
County Executive's Office	CountyStat Follow-up Items for Departments	CountyStat Follow-up Items for Departments	Data not collected

County Executive's Office	Innovation Programs	Status of innovation projects	Unpublishable Format
County Executive's Office	Internal Audit Recommendations	Internal audit reports with recommendations for improving internal controls and programmatic operations". File pathway https://www.montgomerycountymd.gov/exec/internal_audit.html	Data not collected/automated.
County Executive's Office	Mentorship Program Participants	Mentorship program for new, small businesses	Data not collected
Emergency Management & Homeland Security	Hazardous Materials Use Permit Chemical Type and Quantity	This dataset is a listing of dangerous use material permit holders, the types of chemicals they have, and the quantities.	Contains sensitive data
Employee Retirement Plans	Deferred Compensation Plan (DCP) Return	Deferred Compensation Plan (DCP) Return	Duplicate
Employee Retirement Plans	Employees' Retirement System (ERS) Annuities	Employees' Retirement System (ERS) Annuities	Duplicate
Employee Retirement Plans	ERS Return	ERS Return	Duplicate
Employee Retirement Plans	Retirees	Number of Retirees	Duplicate
Employee Retirement Plans	Retirement Savings Plan (RSP) participants	Retirement Savings Plan (RSP) participants	Duplicate
Employee Retirement Plans	Retirement Savings Plan (RSP) Return	Retirement Savings Plan (RSP) Return	Duplicate
Environmental Protection	Annual Business Waste Reduction and Recycling Report; and Annual Multi-Family Waste Reduction and Recycling Report	All multi-family properties and a subgroup of non-residential properties report annually on their waste reduction, recycling, and refuse activities and infrastructure. This information is used to assess recycling achievement and opportunities. However, the data is not valid.	Data not collected
Environmental Protection	GIS Contour data	floodplain measurements	Data owned by a third party
Environmental Protection	Solid Waste Residential Collection Day lookup	Recycling and trash collection days by geographic area (up-county would only show recycling)	Duplicate
Finance	Bonds Issues	Bonds Issues	Contains sensitive information
Finance	Lump Sum Award Report	Tracking report on all lump sum awards made to County employees	Duplicate
Finance	Near Miss App	Data that includes near-miss accident information submitted anonymously by citizens.	Contains sensitive information
Finance	Risk Management Volunteer Registration System	Risk Management Volunteer Registration System	Data not collected
Finance	Telephone Tax	Telephone Tax in general	Duplicate
Finance	Top 250 Employers	The 250 largest employers in the county	Contains sensitive data

Finance	Volunteer Registration	Volunteer Registration System Dataset for most volunteers doing work for the county	Duplicate
Fire & Rescue Services	SCBA Fit Test	Information regarding who has completed a fit test for SCBA usage. Every firefighter must complete the test. It also determines the size of the mask each person wears.	Internal use only
General Services	Fleet - Telematic	Electronic vehicle usage data (summarized)	Internal use only
General Services	Fleet - Vehicle Class Annual (Fiscal Year) Summary	Summary information (average age, total quantity, miles driven, fuel consumption, etc.) by vehicle class	Data not collected
General Services	Printing/Copying Paper Usage	Paper Usage from Ricoh Multi-Function Printers	Data not collected
General Services	Property Inventory	County-owned properties and associated real estate expenditures/costs	Internal use only
Health & Human Services	ACA Health Insurance Enrollment Sites	Locations and hours of operation for enrolling in health insurance under the Affordable Care Act	Data not collected
Health & Human Services	Adult Protective Services (APS) Investigations	Data would show the total number of adult protective service cases in a quarter and break it down by type (exploitation, abuse, neglect)	Duplicate
Health & Human Services	Behavioral Health Service Providers	Dataset and map of behavioral health service providers	Internal use only
Health & Human Services	Birth Characteristics FY16	birth characteristics by age, race, ethnicity, education, prenatal care, and birth outcomes	Data not collected
Health & Human Services	Child Care	Licensed Child Care Centers	Duplicate
Health & Human Services	Community Health Indicator Data	Leading causes of death by age, race, ethnicity, etc.	Duplicate
Health & Human Services	Crude Adjusted Mortality Rates	Crude Adjusted Mortality Rates	Duplicate
Health & Human Services	DHHS Locations	DHHS service facilities and hours	Duplicate
Health & Human Services	Food Assistance Providers	Dataset and map of food assistance providers and Ride-On bus stops	Duplicate
Health & Human Services	Licensed Pool Inspections	Licensed swimming pools include public pools, spas, beaches, and spray attractions intended for recreational and therapeutic use. Does not include private pools at a single-family residence.	Duplicate
Health & Human Services	Maryland Youth Risk Behavior Survey	Results from the US Centers for Disease Control and Prevention/Maryland Department of Health and Mental Hygiene Biennial Survey on health status and risk behaviors among in-school adolescents in middle and high schools. Dataset availability is contingent upon approval from DHMH, the owner of YRBS data in Maryland.	Internal use only
Health & Human Services	Montgomery County Behavioral Health Service Providers	A public dataset and map of all behavioral health service providers in Montgomery County	Duplicate

Health & Human Services	Montgomery County Food Assistance Providers	Public dataset and map of Montgomery County Food Assistance Providers with a layer of Ride-on bus stops.	Duplicate
Health & Human Services	Senior Nutrition Program	Data would be submitted quarterly for congregate meal sites and home-delivered meal sites. We would share the number of people served and the number of meals served. For congregate sites, we could share the data by congregate meal site.	Duplicate
Health & Human Services	Service Fees	Fees for various DHHS program services	Internal use only
Health & Human Services	SNAP Caseloads	Historical average caseloads	Data owned by a third party
Human Resources	Direct Bill Employees/Former Employees' Addresses	Addresses of employees/former employees who are directly billed for group health benefits.	Internal use only
Human Resources	Direct Bill Retirees' Addresses	Addresses of retirees who are billed directly for group health benefits	Internal use only
Human Resources	EEO-1 Report	Demographics by EEO categories, including MLS	Not Public Information
Human Resources	Employees with Temporary Promotions	List of employees, with select demographic descriptors, who are in temporary promotion status	Internal use only
Human Resources	Essential Employees List	Master list of all essential employees in the County	Internal use only
Human Resources	Group Health Plan Enrollment Rate	Enrollment data by plan, plan type (in-network, out-of-area), member type, etc.	Internal use only
Human Resources	Health Benefits - Healthcare Trend History	Measures annual percentage change in health care claims costs and compares to industry standard - Kaiser Trend Survey.	Internal use only
Human Resources	Health Insurance Team - Customer Care Contacts	Details the number of customer care contacts by inquiry type.	Internal use only
Human Resources	Job Applicant/iRecruit/Recruitment Manager Customer Service Survey	Provides data on applications for County positions, including limited demographic information. Also includes customer service survey results.	Data not collected
Human Resources	Job Classification Report (Table IV)	Inventory of most position classifications available in the County	Internal use only
Human Resources	List of Disabled Police Officers	Group Health - list of disabled police officers	Internal use only
Human Resources	List of Domestic Partners with Health Coverage	Group Health - list of domestic partners with health coverage	Internal use only
Human Resources	List of Domestic Partners with Vision Insurance	Group Health - list of domestic partners with vision insurance	Not Public Information
Human Resources	OMS/FROMS Drug Test Reason	Drug testing by the precipitating event reason	Not Public Information
Human Resources	Performance Management Reports	Performance rating cycles, ratings (MLS, union, non-represented), with select demographic descriptors	Not Public information
Human Resources	Position Transactions Report	Database of position transactions, with position details. Should also include information on when the transaction was received and approved/denied by OMB and OHR	Duplicate
Human Resources	Prudential Subscriber List - FOP	FOP members with basic and optional Prudential life insurance coverage	Not Public information
Human Resources	Report of Disabled Dependents	Report of disabled dependents	Internal use only

Human Resources	Retiree Addresses	List of County retirees' addresses	Internal use only
Human Resources	Retirement Code Audit Report	Inventory of retirement plan enrollment	Internal use only
Human Resources	Stress Management Team Activity and Incidents	Inventory of stress management team activity and incidents	Not Public Information
Human Resources	Supervisor Positions	List of all positions, including demographic descriptors, with names of supervisees	Not Public Information
Human Resources	Training Tracking Database	Documentation of required and optional training completed by the employee.	Not Public Information
Human Rights	Complaints received	Human Rights Complaints received	Data not collected
Human Rights	Reports to State and Federal Governments	HRC reports for the state or federal government.	Data not collected/automated
Legislative Branch	Board of Appeals Hearing Agenda	Board of Appeals Hearing Agenda	Internal use only
Legislative Branch	Board of Appeals Opinions	Board of Appeals Opinions	Internal use only
Legislative Branch	Merit System Protection Board Annual Reports	Merit System Protection Board Annual Reports	Data not collected/automated
Legislative Branch	Montgomery County Council Code	The Charter defines the duties, powers, rules, procedures, and structure of local county government and the rights of voters and citizens. The dataset is the index of code.	Data not collected
Legislative Branch	Montgomery County Zoning Ordinance	A Zoning Ordinance is a lengthy document that describes not only the acceptable use for specified areas of land but also the procedures for handling infractions (including any penalties), granting variances, and hearing appeals.	Duplicate
Management & Budget	Internal Department Content Management System	OMB Internal Content Management System	Internal use only
Permitting Services	Code Compliance & Inspections	Information on code compliance inspections, types of buildings, and hours	Data not collected
Permitting Services	Construction Debris Reclamation Facility License	License to operate a Construction Debris Reclamation Facility in Montgomery County	Internal use only
Permitting Services	Customer Management System	Automated log of customers served at DPS offices. Used to track and route customers to the proper work queues.	Internal use only
Permitting Services	Document imaging	Contains electronic images and identifying information for paper documents that DPS scans and converts to electronic format	Internal use only
Permitting Services	Environmental Health Survey	Dataset to track the effort performed in support of HHS.	Internal use only
Permitting Services	ePlans	Construction and land development plan drawings are in electronic format for plans that are currently being reviewed.	Internal use only
Permitting Services	Fire lanes	A fire department access road is marked with approved signs or notices.	Data not collected
Permitting Services	Limited Duration Sign Installer License	A license is required to install a non-permanent sign that is either displayed on private property for more than 30 days, or within the public right-of-way on weekends only, or for 14 days.	Data not collected

Permitting Services	Limited Duration Sign Permits	A limited-duration sign permit is required for a non-permanent sign that is displayed on private property for more than 30 days or within the public right-of-way on weekends only or for 14 days.	Data not collected
Permitting Services	Operation Permit	Active and Passive Fire Protection System Permits for Maintenance and Inspection compliance.	Data not collected\automated
Permitting Services	Parking Standards Waiver	Dataset to track requests for waivers of parking requirements	Data not collected
Permitting Services	Record Plat	Dataset to track DPS processing of record plats	Unpublishable format
Permitting Services	Sign Installer License	A Sign Installer License is a license issued by the Department of Permitting Services (DPS) jointly to a business and a person employed by the company who has completed training and passed an examination on the current sign regulations.	Data not collected
Permitting Services	Well & Septic paper files	Well and septic system applications, drawings, permits, notes, etc., for properties with well and/or septic systems.	Data not collected\automated
Police Department	CAD Response metrics	Calls received, dispatched, response times...	Data not collected
Police Department	Juvenile Crime Data	Juvenile Statistical Information	Contains sensitive data
Police Department	Uniform Crime Reporting	Uniform Crime Reporting Data	Duplicate
Procurement	MFD Contracts & Funds Encumbered	Active contracts for Minority, Female, and Disabled (MFD) owned business and funds encumbered	Internal use only
Public Libraries	Books, audiobooks, DVDs, playaways, CDs, and magazines borrowed	Value is the total number of physical items checked out by MCPL customers in the fiscal year	Duplicate
Public Libraries	Children's Non-Stem Program Attendance	Focus on age group categories (i.e., PreK, Children, Teens, Adults, Seniors) as defined by and reported to the Institute of Museum and Library Services.	Duplicate
Public Libraries	Children's Non-STEM Programs	Focus on age group categories (i.e., PreK, Children, Teens, Adults, Seniors) as defined by and reported to the Institute of Museum and Library Services.	Duplicate
Public Libraries	Hours of meeting room use	Value is the total number of meeting room hours booked by fiscal year	Duplicate
Public Libraries	In-person questions answered	Value is the number of questions answered by the branch staff during a fiscal year.	Duplicate
Public Libraries	One-hour instruction in basic literacy, ESL, or English for daily use	Value is the total number of one-hour sessions for instruction in basic literacy, ESL, or English for daily use in the fiscal year.	Data not collected
Public Libraries	Questions via website, email, chat, social media, or letters answered	Value is the total number of information questions answered by staff via web, social media, or letter	Data not collected
Public Libraries	Songs downloaded	Number of songs downloaded to personal devices by MCPL customers	Data not collected
Public Libraries	Summer reading program (SRP) books read.	Value is the total number of books recorded as read in the SRP database each summer.	Data not collected
Public Libraries	Summer reading program (SRP) registration	Value is the total number of signups for the baby, children, and teen Summer Reading Program.	Data not collected
Public Libraries	Teen Program Attendance	Focus on age group categories (i.e., PreK, Children, Teens, Adults, Seniors) as defined by and reported to the Institute of Museum and Library Services.	Duplicate
Public Libraries	Total children's library card registrations	Value is the total number of valid library cards for children ages 13 or under	Data not collected

Public Libraries	Total use of office resources	The value is the total annual website visits, database downloads, Wi-Fi use, computer sessions, and AWE Early Literacy Workstations.	Duplicate
Public Libraries	Use of Children-specific databases	Value is the total number of sessions in one of the MCPL children's specific databases.	Data not collected
Public Libraries	Visits to our website	Value is the total number of visits to the MCPL website in a fiscal year	Duplicate
Technology Enterprise Business Solutions	AD Inventory of users, computers, and email accounts	Inventory of the number of users, computers, and email accounts	Internal use only
Technology Enterprise Business Solutions	Application Portfolio Inventory	Inventory of county-wide active applications	Internal use only
Technology Enterprise Business Solutions	Inventory of Applications using Enterprise CM Support	Inventory of Applications using Enterprise CM Service	Internal use only
Technology Enterprise Business Solutions	Inventory of Content Management Users	Inventory of Content Management Users	Data not collected
Technology Enterprise Business Solutions	Inventory of IVR Applications	Inventory of IVR Applications	Data not collected
Technology Enterprise Business Solutions	Inventory of Radio Frequencies	Inventory of Radio Frequencies used by the County	Contains sensitive data
Technology Enterprise Business Solutions	Office 365 CCB Change Requests	We can return the number of Office 365 CCB Change Requests.	Internal use only
Transportation	Adopt a Sponsor	This is part of Adopt a Road, a distinct subset	Data not collected
Transportation	Beautification Award	Beautification Award	Data not collected
Transportation	Beautification Grant	Beautification Grant	Data not collected
Transportation	DOT Data Requested via MC311	Requests from MC311 for data regarding DOT	Duplicate
Transportation	E-roads biannual study with road ratings	Survey of county roadways pavement condition	Duplicate
Transportation	On-street sensor data	Monitoring of street parking space availability	Data not collected
Transportation	Parking Facility Data	GIS-based parking facility data	Duplicate

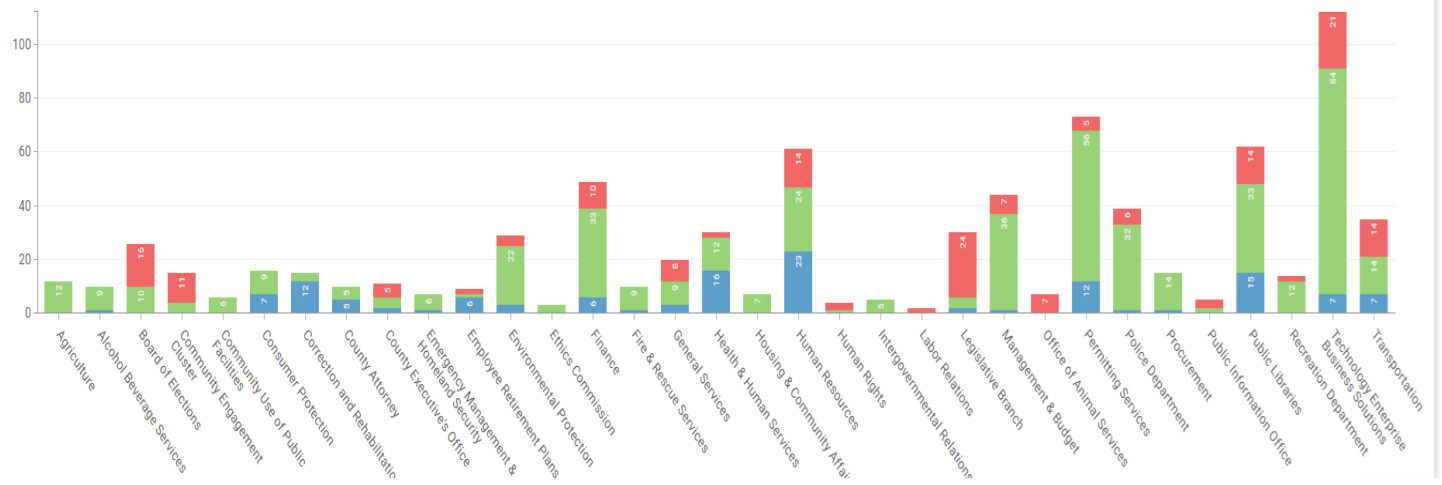
Appendix F: Dataset Count by Department and Prioritization

Department	Currently Published	Scheduled FY25	FY26 & Beyond					Grand Total
			P1	P2	P3	P4	P5	
Agriculture	11	1	0	0	0	0	0	12
Alcohol Beverage Services	9	0	0	0	0	1	0	10
Board of Elections	10	2	0	0	2	2	10	26
Community Engagement Cluster	4	0	0	2	2	5	2	15
Community Use of Public Facilities	6	0	0	0	0	0	0	6
Consumer Protection	9	0	1	0	2	2	2	16
Correction and Rehabilitation	3	0	0	3	1	6	2	15
County Attorney	5	1	0	1	2	1	0	10
County Executive's Office	4	0	2	1	2	0	2	11
Emergency Management & Homeland Security	6	0	0	1	0	0	0	7
Employee Retirement Plans	1	0	0	0	2	5	1	9
Environmental Protection	22	2	0	1	2	0	2	29
Ethics Commission	3	0	0	0	0	0	0	3
Finance	33	5	1	0	2	2	6	49
Fire & Rescue Services	9	0	0	0	0	0	1	10
General Services	9	0	1	1	5	2	2	20
Health & Human Services	11	1	1	8	3	6	0	30
Housing & Community Affairs	7	0	0	0	0	0	0	7
Human Resources	24	2	1	0	0	10	24	61
Human Rights	1	0	0	0	1	0	2	4
Intergovernmental Relations	5	0	0	0	0	0	0	5
Labor Relations	0	0	0	2	0	0	0	2
Legislative Branch	4	1	1	19	4	1	0	30
Management & Budget	36	7	0	0	0	0	1	44
Office of Animal Services	0	7	0	0	0	0	0	7
Permitting Services	56	2	1	2	6	0	6	73
Police Department	32	3	0	2	1	0	1	39
Procurement	14	0	1	0	0	0	0	15
Public Information Office	2	1	0	0	0	0	2	5
Public Libraries	46	1	0	0	0	14	1	62
Recreation Department	13	2	0	0	0	0	0	15
Technology Services	84	0	0	0	0	1	27	112
Transportation	14	0	1	8	6	4	2	35
Grand Total	493	38	11	51	43	62	103	794

Departmental Dataset Publishing Status (Published vs Not Published) Chart FY25

Departmental Dataset Publishing Status (Published vs Not Published) Chart FY25

A Stacked Bar chart by Department and Publishing Status



Appendix G: openMontgomery Memorandum from CAO



OFFICES OF THE COUNTY EXECUTIVE

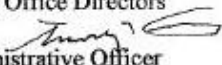
Isiah Leggett
County Executive

Timothy L. Firestine
Chief Administrative Officer

MEMORANDUM

December 4, 2012

TO: Executive Branch Department and Office Directors

FROM: Timothy L. Firestine, Chief Administrative Officer 

SUBJECT: "openMontgomery" and Initial Survey of Government Datasets

A responsive and accountable County Government has long been among the County's highest priorities. As many of you already know, we have had much success with accountability systems such as MC311 and CountyStat.

On Wednesday, December 5, 2012, the County Executive will announce the new "openMontgomery" initiative. This is in concert with the open government Bill 23-12 introduced by Councilmember Riemer and approved by the full Council today, December 4, 2012. Together these actions will ensure our open government efforts remain strong and that this County remains on the path to even greater transparency, accessibility, and efficiency in the future.

The openMontgomery initiative includes four programs: accessMontgomery, dataMontgomery, mobileMontgomery, and engageMontgomery. They are designed to work together to leverage recent advancements in digital technology platforms in the areas of open data, social media, and mobile applications. Each program portal offers easier access to services than current platforms.

The dataMontgomery program seeks to open the County's data sets so they can be sorted and used in various ways, including being potentially leveraged in the development of new applications and services by interested parties. The engageMontgomery program includes a new social media platform that can serve as an informal Town Hall and facilitate participation from employees and residents on topics of interest including openMontgomery programs. The mobileMontgomery site offers information on all of the County's mobile websites and applications in one convenient location. The accessMontgomery site provides a single portal of County information presently available on many platforms including the County's new web portal, which supports mobile web pages, language translation, and user interaction.

As envisioned by the County, over time openMontgomery will serve as Montgomery County's "Digital Government" strategy for building a 21st century program and culture to better serve our residents, businesses, employees, and other partners. Additional information about openMontgomery, as well as links to the County's Digital Government Strategy and Roadmap document and the County's new Open Government legislation, can be found online at <http://montgomerycountymd.gov/open/>.

As you may know, digital government programs in progressive local, state, and federal governments are successfully using open data initiatives to create opportunities. Montgomery County aims to become a leader among county governments by developing a comprehensive Open Data Implementation Plan and systematically publishing all its valuable datasets over time.

To ensure successful development and implementation, I am asking for your full support and cooperation on all aspects of this new initiative.

Soon, through CountyStat, departments and offices will receive a comprehensive survey asking them to inventory all available datasets. This will include guidance on all aspects of data identification, valuation, collection, validation, and publication. In the meantime, by close of business on Friday, January 11, 2013, please respond to this [Initial Datasets Survey](#) that is intended to identify a number of high value, high quality, and ready to publish datasets.

If you have any further questions, please contact Fariba Kassiri, Assistant Chief Administrative Officer, at 240-777-2512 or Fariba.Kassiri@montgomerycountymd.gov.

Thank you in advance for taking part in this important effort.

TLF:ss

cc: Steve Farber, Council Staff Director

Appendix H: Dataset Scoring Methodology and Outreach

The datasets were individually scored by the Public Information Officer and the manager of CountyStat. The categories, six internally focused and six externally focused, each convey between zero and ten points, and are:

Internal:

- ☐ Is the dataset aligned with the Department's core function / To what degree does publishing this data further the core mission of the Department? (1-10 points)
- ☐ Is the dataset a direct or indirect source of a department's Headline Performance Measure(s) and/or Supporting Measure(s)? (2 = No, 4 = Indirect/Supporting, 6 = Direct/Supporting, 8 = Indirect/Headline, 10 = Direct/Headline)
- ☐ Will posting the data result in administrative time saved for a department(s)? (i.e. will they be able to stop spending time responding to requests for this particular information?) (No = 0, Maybe/Minimal = 5, Yes = 10)
- ☐ Is the data already collected and readily accessible so as not to require new or additional business processes? (1 = Significant Effort, 5 = Medium Effort, 10 = Minimal Effort)
- ☐ Is the data used across departments and does its publication facilitate collaboration? (No = 0, Yes = 5)
- ☐ Will publishing this dataset enable the retirement of a legacy system or database? (No = 0, Yes = 5)

External:

- ☐ Is the data typically used when deciding policies that impact residents' quality of life? (Never = 0, Sometimes = 5, Always = 10)
- ☐ Will publishing this dataset allow a business or resident to perform a process more efficiently and/or effectively? (Doubtful = 0, Possibly = 5, Certainly = 10)
- ☐ Is Montgomery County the only source of the data? (No = 0, Yes = 5)
- ☐ Does the data contribute to civic engagement? (Doubtful = 0, Possibly = 5, Certainly = 10)
- ☐ Does the data create economic opportunity? (No = 0, Maybe = 5, Yes = 10)
- ☐ Will publishing this dataset make the Department more accountable and/or responsive by improving/increasing the public's knowledge of its operations? (No = 0, Yes = 5)

All scoring was conducted in a manner that was as consistent as possible. The externally-focused scoring categories relied heavily on public input. The internally-focused categories looked to the headline measures CountyStat uses to measure departments and the potential operational impact of publishing the dataset. CountyStat facilitated meetings with each department to identify datasets and their internal utility. If a dataset demonstrated its usefulness to the public and government operations, or for measuring internal performance, it invariably scored highly. This process was the first of its kind in the country. The scorecard has been requested by other jurisdictions as they embark on their open data programs.

Extensive outreach was conducted to provide all residents with an opportunity to inform this process. Two Open Data Town Halls were held (one in Bethesda and one in Germantown) to give residents a chance to learn about dataMontgomery, speak with knowledgeable County staff, and provide their open data priorities. At the same time, a social media campaign was conducted using the hashtag #opendataMC to provide feedback

opportunities to residents who could not make it to a live event. Also, in the fall and spring, targeted workshops were held on several focused topics: public safety data, transit data, and financial transparency data. For these workshops, the County invited focus groups of active residents to provide feedback. For example, the Montgomery County Police Department identified active Neighborhood Watch captains and asked them to participate in a workshop on crime data. For financial transparency, the Montgomery County Civic Federation and the Montgomery County Taxpayers League identified representatives to participate. Finally, representatives from TEBS, our open data portal vendor, and the Chief Innovation Officer conducted a series of outreach presentations at area high schools to educate them on what open data is and how they can use it, and to find out what data is important to them.

Due to the distributed nature of the scoring based on the variety of factors, if there were a consensus that scoring should be changed in a particular category, the overall ranking would change little. The value of data stems from a multitude of factors. For a public-sector entity that must respond to internal factors as well as the needs of constituents, these criteria appropriately reflect the value of data.

Appendix I: MPIA Response Publishing

1. Assumptions
 - 1.1. The purpose is to publish MPIA responses that have a high data value
 - 1.2. County's MPIA processing – no change, remains decentralized
 - 1.2.1. Each department (data owner) receives and responds to requests
 - 1.2.2. Each department follows its own internal processes for compiling, redacting, and validating data
 - 1.3. Response to MPIA request may be directing requestor to dataMontgomery
 - 1.4. FOIA requests are treated as MPIA requests
 - 1.5. Only responses to written requests will be posted
2. Format – data published will be in same format as provided previously
(DOC, XLS, PDF, TIFF, JPG, PST, etc.)
3. The County publish MPIA responses and MPIA Request Information on dataMontgomery
4. General Process
 - 4.1. Department adds a request entry to the MPIA publishing application when the request has been determined to fall under the publishing guidelines under this plan and a response is ready to be posted
 - 4.2. Upon completion of data collection validation process, Department adds files to MPIA publishing application that fulfill the request, enters MPIA Request Information, and sends requestor notice that response is available for download
 - 4.3. Periodically (hourly) an automated process will transfer files and MPIA Request Information to dataMontgomery
5. Departmental organizational units that will post MPIA requests and responses
 - 5.1. Community Engagement Cluster (CEC)
 - 5.2. Community Use of Public Facilities (CUPF)
 - 5.3. Consumer Protection (OCP)
 - 5.4. County Council (CCL)
 - 5.5. County Executive's Office (CEX)
 - 5.6. Economic Development (DED)
 - 5.7. Elections (BOE)
 - 5.8. Environmental Protection (DEP)
 - 5.9. Ethics Commission (ECM)
 - 5.10. Finance (FIN)
 - 5.11. General Services (DGS)
 - 5.12. Health & Human Services (HHS) – Office of Public Health only
 - 5.13. Housing and Community Affairs (HCA)
 - 5.14. Human Resources (OHR)
 - 5.15. Human Rights (HR)
 - 5.16. Intergovernmental Relations (IGR)
 - 5.17. Liquor Control (LIQ)
 - 5.18. Management and Budget Office (OMB)
 - 5.19. Permitting Services (DPS)

- 5.20. Public Information (PIO)
- 5.21. Public Libraries (LIB)
- 5.22. Recreation (REC)
- 5.23. Technology Enterprise Business Solutions (TEBS)
- 5.24. Transportation (MCDOT)

6. Departments / organizational units which historically have sensitive data concerns will participate at a future date.

- 6.1. Board of Investment Trustees (BIT)
- 6.2. Correction & Rehabilitation (COR)
- 6.3. County Attorney's Office (CAT)
- 6.4. Emergency Management and Homeland Security (OEMHS)
- 6.5. Health & Human Services (HHS) – Other units
- 6.6. Fire and Rescue Services (FRS)
- 6.7. Police (POL)

7. Per MPIA, data containing the following MUST NOT be published:

- 7.1. adoption records
- 7.2. welfare records
- 7.3. letters of reference
- 7.4. library circulation records
- 7.5. confidential gifts to libraries or museums
- 7.6. retirement records
- 7.7. certain police records when requested for soliciting or marketing legal services
- 7.8. personnel records
- 7.9. student record
- 7.10. risk-based capital records (insurance)
- 7.11. certain Maryland Transportation Authority records
- 7.12. higher education investment contracts
- 7.13. recorded images from automated monitoring systems
- 7.14. MVA records containing personal information
- 7.15. records pertaining to arrest warrants
- 7.16. certain Maryland Transit Administration records
- 7.17. Maryland Department of Natural Resources' records containing personal information
- 7.18. application for renewable energy credit certification or claims for credits
- 7.19. criminal surveillance images
- 7.20. medical and psychological information
- 7.21. sociological information per adopted regulation
- 7.22. commercial information
- 7.23. home address/telephone number of public employee
- 7.24. financial information of an individual
- 7.25. information about security of an information system
- 7.26. licensing records
- 7.27. records of a transportation contractor's suspected collusive or anticompetitive activity
- 7.28. notary publics
- 7.29. license application containing social security numbers
- 7.30. personal information about a person that maintain an alarm or security system
- 7.31. records of senior citizen activities centers

- 7.32. records whose disclosure the department believes to be contrary to the public interest, because disclosure to the general public would constitute an unwarranted invasion of personal privacy
8. Other types of requests that will not be published:
 - 8.1. Requests limited to persons in interest
 - 8.2. A response to a request, when the response is issued in connection with a court proceeding
 - 8.3. Standard documents already published elsewhere
 - 8.4. Bids, Responses to RFPs
 - 8.5. Requests related to routine business processes, examples: (Plats, plans, use and occupancy certificates, etc.)
9. Types of requests that should be reviewed to include data on dataMontgomery, such as:
 - 9.1. Counts of transactions processed, pending, denied, approved, by type, time period, location, etc.
 - 9.2. Counts records
 - 9.3. Other Counts
10. Process
 - 10.1. Request is received by data owner
 - 10.2. Clarify/negotiate data scope requested, if required
 - 10.3. Retrieve, assemble (redact) data
 - 10.4. Attorney review, if required
 - 10.5. If meets criteria,
 - 10.5.1. Post request information on MPIA publishing site
 - 10.5.2. Post response on MPIA publishing site if in the discretion of the records custodian the public interest in posting the response outweighs any privacy interests of the individual(s) involved (e.g. e-mail addresses). Incremental partial responses may be posted, but are not required
11. MPIA Request Information
 - 11.1. Requestor Name
 - 11.2. Requestor Organization
 - 11.3. Request Description
 - 11.4. Request intake
 - 11.4.1. U.S. Mail
 - 11.4.2. E-mail
 - 11.4.3. Other
 - 11.5. Lead Department
 - 11.6. Data owning Department(s)
 - 11.7. Date Response posted

