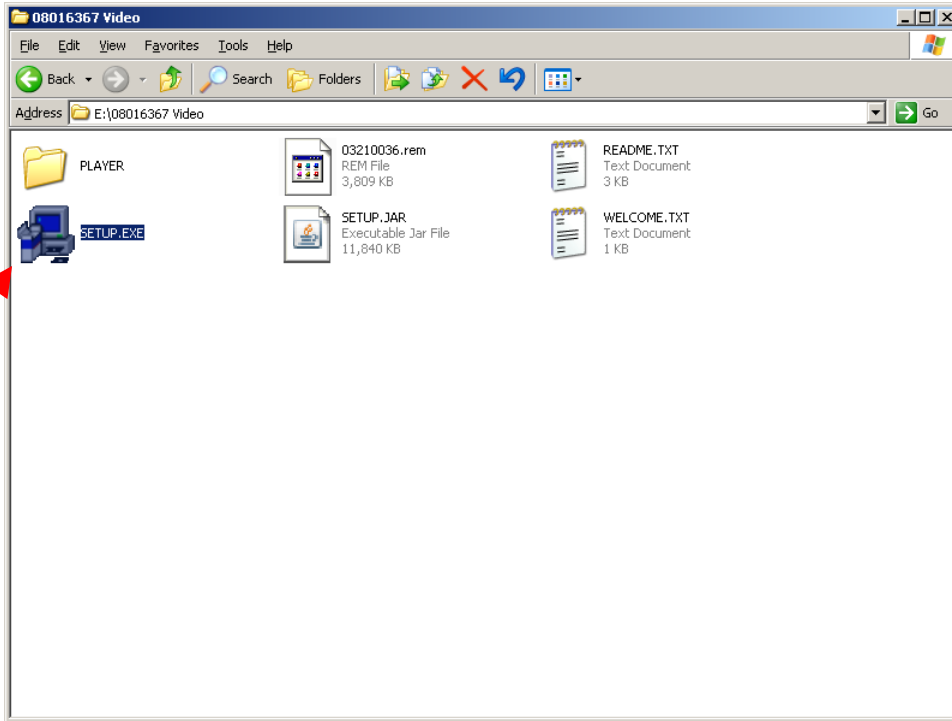


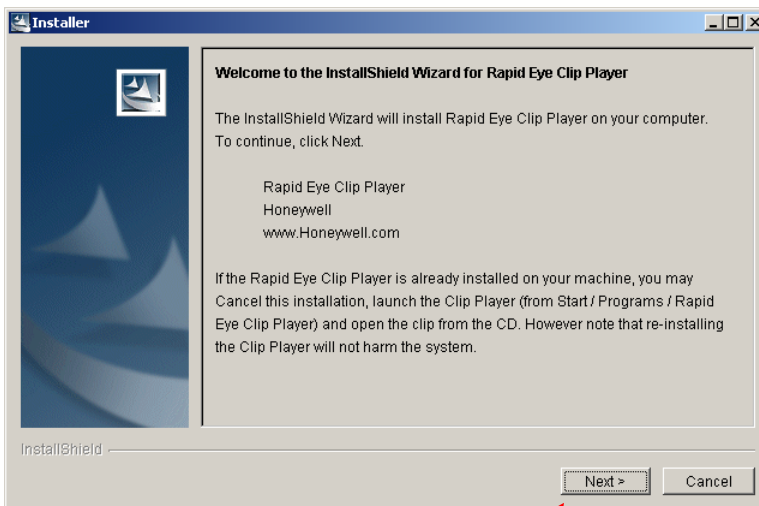
REM Player Instructions

For Mcdonald's Video 3-21-2008

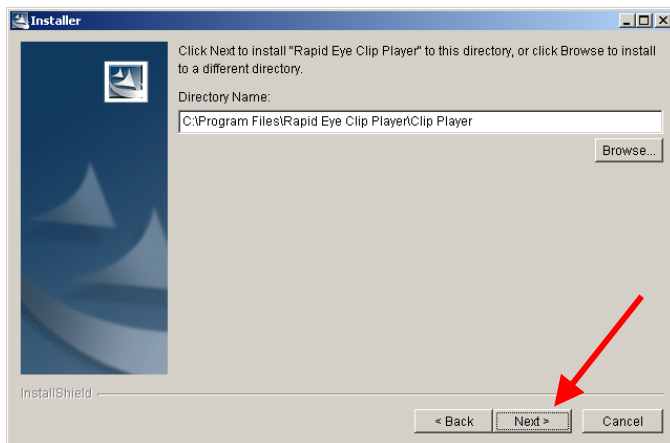
1. Double click on the *setup.exe* icon to start the instillation process. If the player is already installed, skip ahead to Step 6.



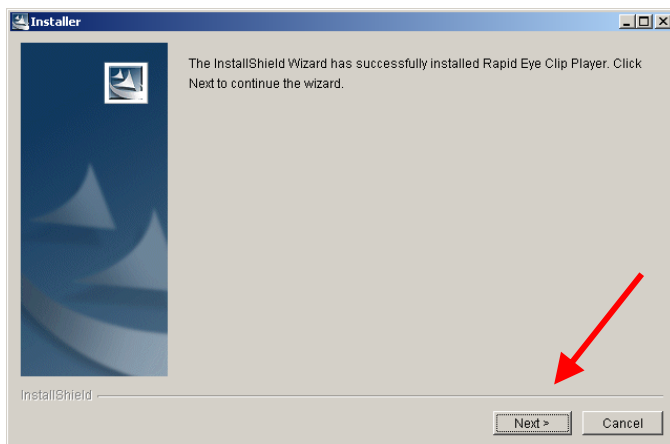
2. When the installer window comes up, click *Next*.



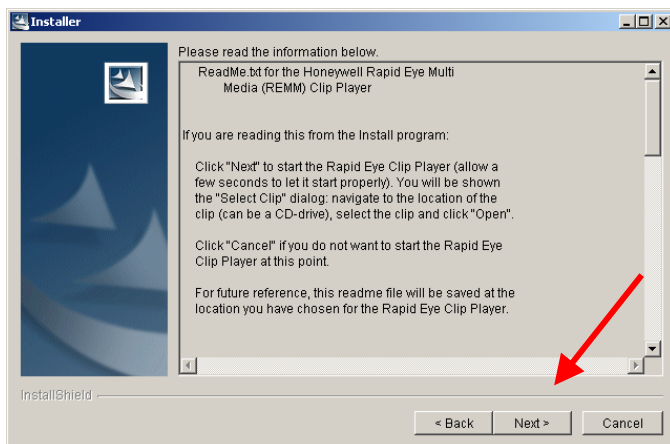
3. Click *Next* again



4. This will start the install. After it is finished, click *Next*.



5. Read the following to learn how to use the player. Then click *Next*.

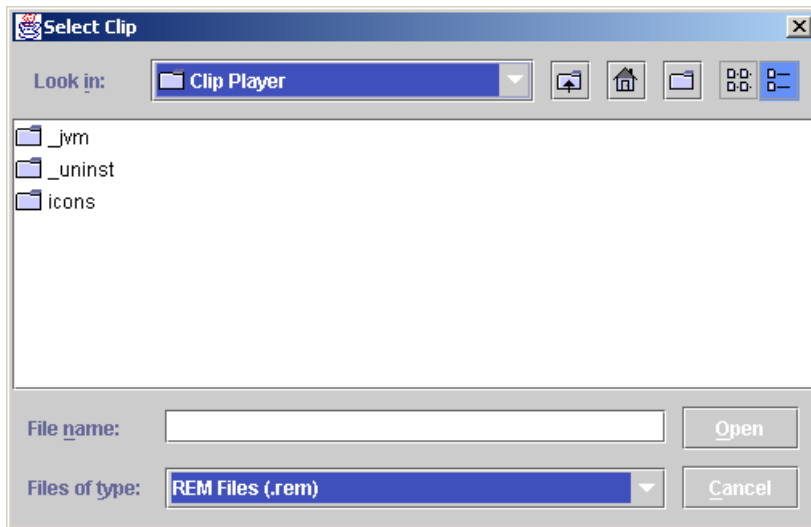


6. To open the player, find the icon on your desktop that is called *Clip Player*



Clip Player.Ink

7. This screen should come up.



8. Go through and find the clip that you want to play and click *Open*. Your video should be playing now.

