



# Montgomery County

## Service Consolidation Hubs

1/20/2021

Age-Friendly Advisory Group Meeting



Hughes United  
Methodist Church



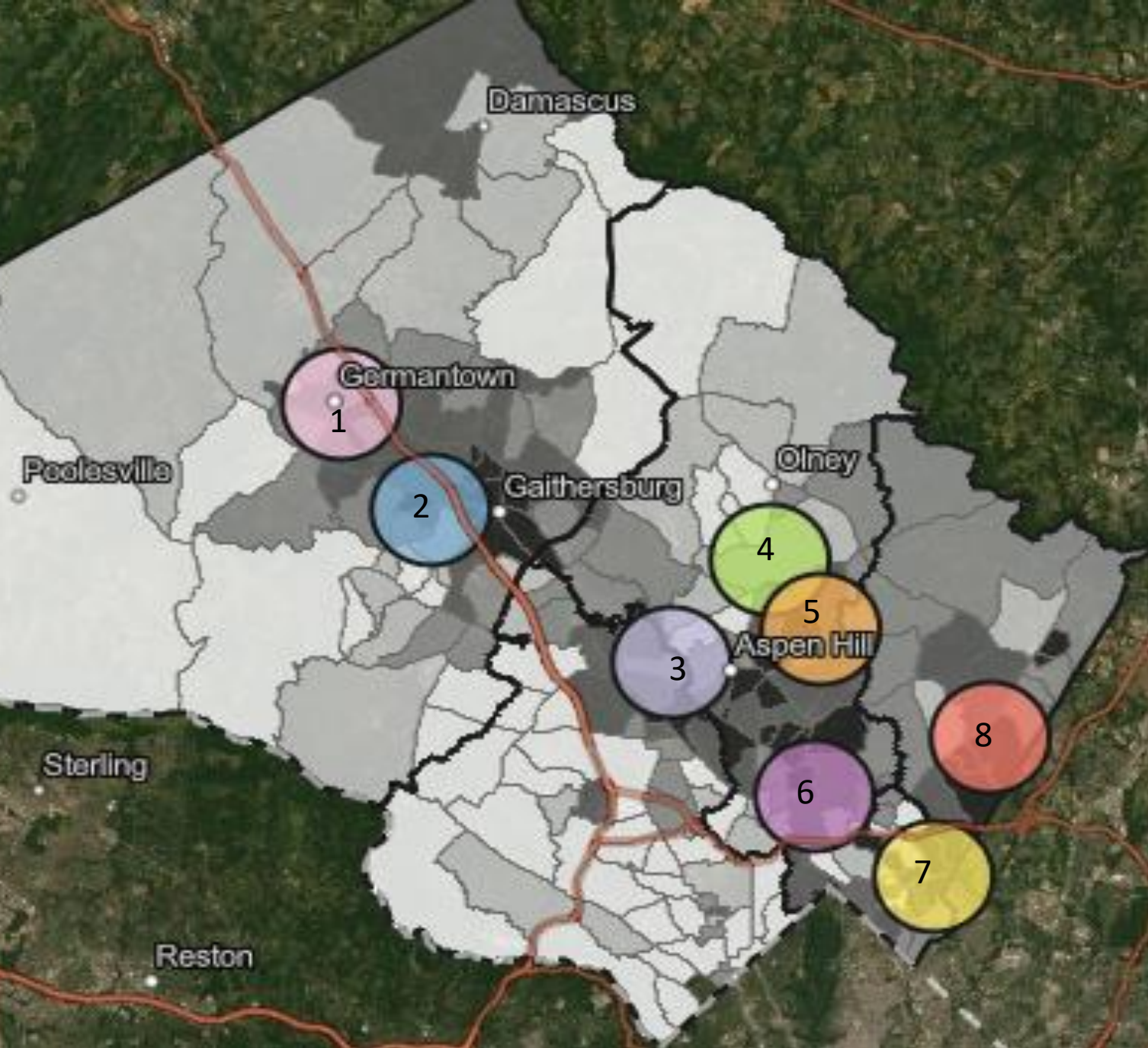


Why did DHHS support the creation of the hubs?



# Service Consolidation Hubs 2021:

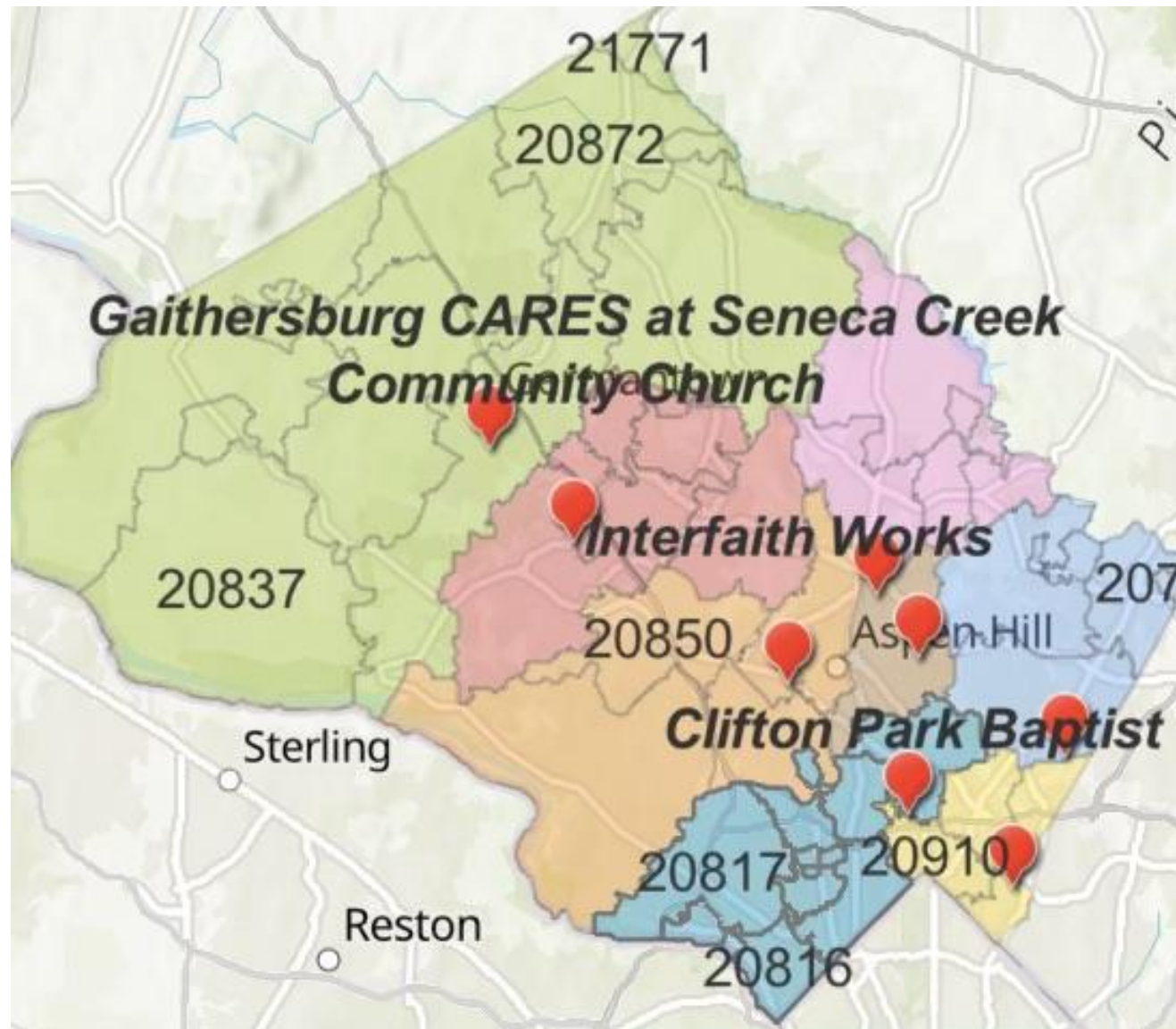
- **FOOD ACCESS:** Low barrier weekly food, diapers on site, drive in, walk-in and by appointment, choice pantry, satellite partners, apartment building, home delivery, culturally appropriate food.
- **COLOCATED SERVICES:** On site bilingual CM, community outreach, Diapers, COVID kits, clothing, prepared meals, vaccines, testing, Holiday Giving.
- **COLLABORATION:** Schools, CBO's, businesses, hospitals, restaurants, and communities.



## LOCATIONS

- 1. Up County at Black Rock CA,**  
12901 Town Commons Dr., Germantown, 20874
- 2. Gaithersburg CARES at Seneca Creek CC**  
13 Firstfield Rd, Gaithersburg, 20878
- 3. Twinbrook at Interfaith Works**  
751 Twinbrook Pkwy # 8, Rockville, 20851
- 4. Mid County at Harvest Intercontinental Church**  
16227 Batchellors Forest Rd, Olney, 20832
- 5. 20906 at Oak Chapel UMC**  
14500 Layhill Rd, Silver Spring, 20906
- 6. Wheaton /Glenmont at Hughes UMC**  
10700 Georgia Ave, Wheaton, 20902
- 7. Silver Spring at Clifton Park Baptist Church**  
8818 Piney Branch Rd, Silver Spring, 20903
- 8. East County at Kingdom Fellowship A.M.E**  
12101 Tech Rd, Silver Spring, 20904

# Review Coverage Map



# Overall Impact – Weekly Averages

- Over 6,000 households
- Over 10,000 children
- Almost 3000 seniors
- About 26,000 individuals
- About 170,000 Lbs. of food at 39 distribution locations
- Distribute over 24,000 diapers
- Leverage more than 1,000 hours of volunteer work
- Serve over 455 households with home deliveries
- Assist 20 or more COVID households
- And refer 60 clients for case management services



# Average Service Data from January to December 2021

## SERVICE CONSOLIDATION HUBS

### Service Averages January to December 2021

Hub	Households	children	Seniors	Individ	Lbs.	Distrib	Home deliv	COVID Hshlds	Diapers	Volunt. Hours	Case Mgmt Ref
Clifton Park	1185	1616	714	4658	27743	7	65	3	2640	181	8
Upcounty	998	1922	299	4068	25402	5	151	2	1932	131	1
Seneca Creek	913	1771	338	4572	23537	8	63	12	8632	142	10
Kingdom	805	1195	405	2675	25545	7	3	0	1482	174	8
Hughes	609	1225	288	3046	20185	3	47	1	2108	114	11
Interfaith	609	1238	325	3019	17929	4	15	1	3012	145	10
Oak Chapel	475	908	402	2006	14530	3	39	1	2697	77	7
Harvest	475	700	208	1757	15053	2	73	0	1885	121	6
Total Average	6068	10576	2980	25801	169923	38	455	20	24388	1085	60

# Thank you: Questions

- **Patrick M. Campbell**  
Senior Planning Manager  
**Office of Emergency Preparedness, Response and Mass Care**  
Office of the Chief Operating Officer  
Montgomery County Department of Health and Human Services

