

Age-Friendly Montgomery County

Presentation:

Maryland Statewide Commission on Aging Summit

September 17, 2019

North Laurel Community Center

Odile Brunetto, Ed.D.

Acting Chief, Aging and Disability Services

Montgomery County Department of Health and Human Services

Marcia Pruzan, Senior Fellow

Aging and Disability Services

Montgomery County Department of Health and Human Services

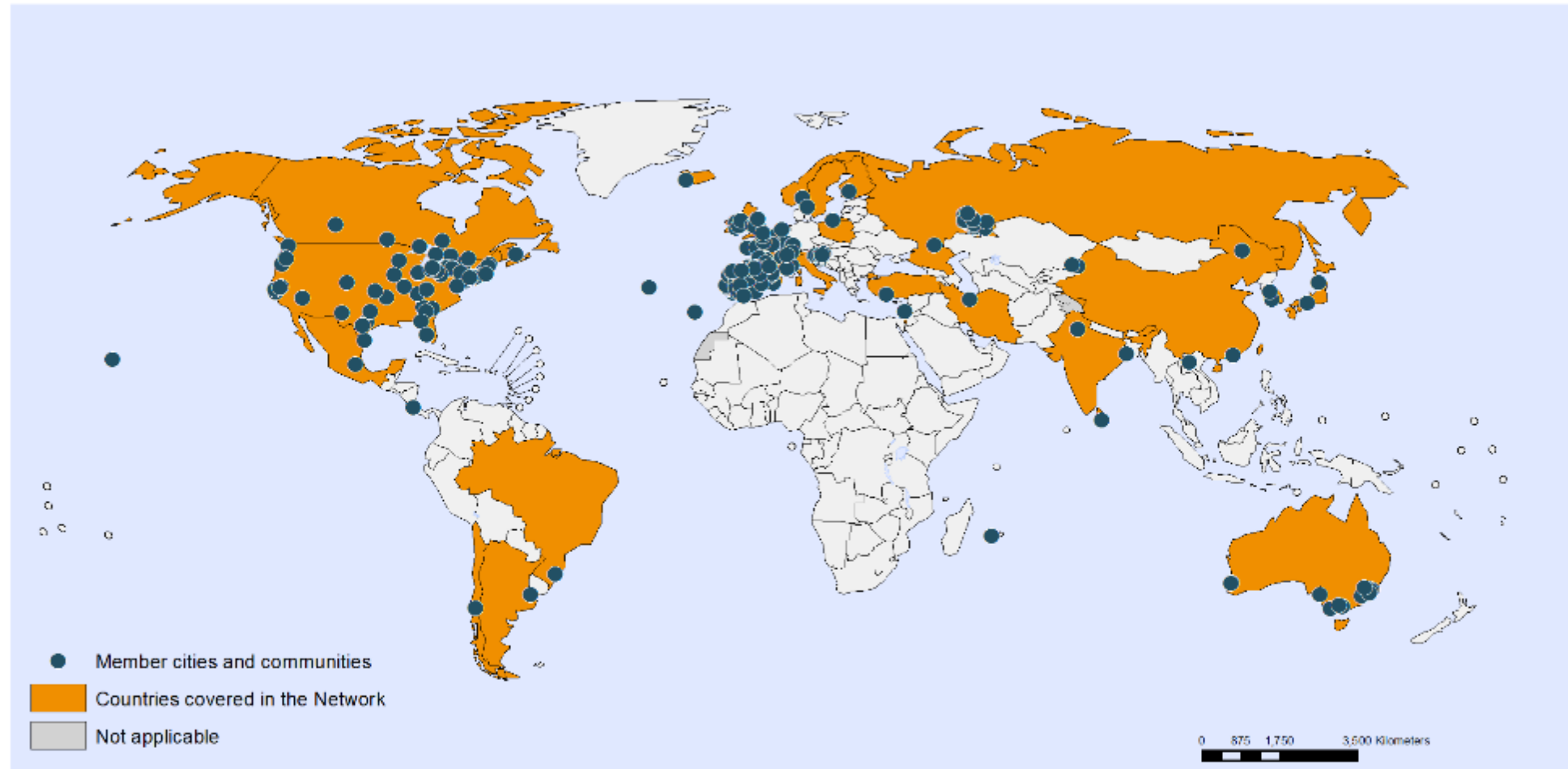


What is the WHO/AARP Age-Friendly Communities Program?

- A global initiative
- 20+ nations
- 180+ communities in the US
- **AARP** is the umbrella organization in the US.
- Encourages states, cities, towns and counties to prepare for the rapid aging of the U.S. population by paying increased attention to the environmental, economic and social factors that influence the health and well-being of older adults.



WHO Global Network of Age-friendly Cities and Communities



The boundaries and names shown and the designations used on this map do not imply the expression of any opinion whatsoever on the part of the World Health Organization concerning the legal status of any country, territory, city or area or of its authorities, or concerning the delimitation of its frontiers or boundaries. Dotted and dashed lines on maps represent approximate border lines for which there may not yet be full agreement.

Data Source: World Health Organization
Map Production: Health Statistics and
Information Systems (HSI)
World Health Organization



© WHO 2015. All rights reserved.

Background/History

- **Long History of Support:** County Executive, County Council, Departments, and Commission on Aging.
- **Recognition of projected growth of older population**
- 2007: Strategic Planning Process initiated
- 2007: Strategic outreach and communication report commissioned: *“Imagining an Aging Future for Montgomery County” (Towson University)*

May 2008: County Executive Establishes “Senior Subcabinet on Vital Living”

Cross-County Initiative

- Data-driven performance
- Strategic governance
- Government transparency
- Culture and accountability

Members: Department Heads, Commission on Aging Chair

November 2008: First Summit on Aging

Staff, Community Partners, Commission on Aging, and Stakeholders

- Review accomplishments and identified needs in eight areas of focus
- Develop and Prioritize Recommendations/Goals
- Identify Cross-Cutting Issues



2008 Senior Summit

- **Work in 8 areas:**
 - Communication and Outreach
 - Housing and Zoning
 - Transportation and Mobility
 - Health and Wellness
 - Civic and Social Engagement
 - Home and Community Support Services
 - Safety
 - Employment
- **Outcomes:** Recommendations and Priorities in 8 work areas

2012: Adoption of Commission on Aging's Senior Agenda

Commitment to Older Adults

- Ageism
- Economic Benefit to County
- Diversity
- Communications
- Aging in Place and Community
- Partnerships

Approved: County Executive (May 2012) and County Council (December 2012)

2012: Commission on Aging Summer Study: Approaches for Aging in the Community

- Recommendation that Montgomery County join Age-Friendly Communities
WHO/AARP
- Recommendation for this initiative to be led and staffed by Montgomery County Government

Summer 2015: Surveys and Focus Groups

- Online and paper surveys of residents 55+ in multiple languages
- Focus groups with older adults from diverse communities
- Results:
 - General appreciation for quality and availability of County services and programs
 - Need for improved communication so that more are aware of programs and services
 - Concern over cost of living, transportation, housing,



2015 MONTGOMERY COUNTY AGE FRIENDLY COMMUNITY SURVEY

Age Friendly Community Survey - 2015

Welcome

1 / 7 14%

Are you 55+ years old? We'd like to hear your opinion about age friendliness in Montgomery County so that we can make the County an even better place to live as we age.

Several years ago, we collected information from hundreds of County residents regarding services for seniors. Based on that feedback, we've been developing and promoting new transportation options, neighborhood villages, sports, fitness and dance programs, volunteer opportunities, housing options, educational programs, activities at senior and recreation centers, nutrition services, library programs, cultural outings, caregiver support and much more. You can learn about these services at: www.montgomerycountymd.gov/senior

This survey is anonymous and will take approximately 15 minutes. Thank you for your feedback and assistance in helping to achieve our shared goal of making Montgomery County a "community for a lifetime."

December 2015: Second Summit on Aging

- To celebrate of accomplishments since 2008
- To review recommendations from focus groups, County-wide survey of seniors, and stakeholders
- To restructure framework into 10 domains
- To prioritize for FY 17 and beyond
- To enroll in AARP's Age-Friendly Communities
- To enroll in Dementia Friendly America



Age-Friendly Montgomery County

THE VISION



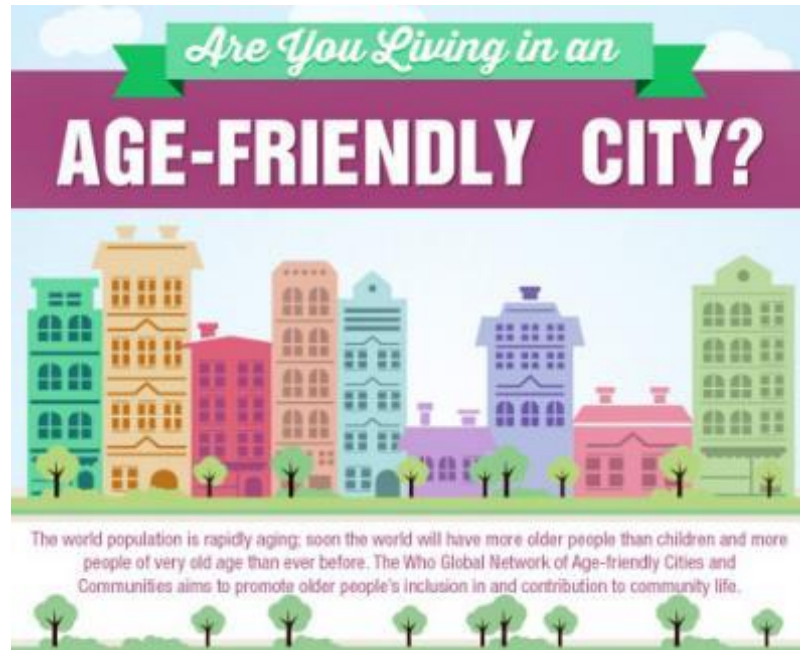
Montgomery County: a wonderfully diverse *Community For a Lifetime*, where all residents can remain and thrive as they age and be a powerful resource in making our County a better, stronger, more inclusive community for everyone.

Supporting Steps Along the Way

- **New Positions**

- Mobility Manager for Senior Transportation Program
- Villages Coordinator
- Caregiver Coordinator (and Dementia Friendly Coordinator)
- Senior Olympics Position (Recreation Department)
- Senior Fellows
 - Age-Friendly Montgomery County
 - Office of Housing and Community Affairs
 - 50+ Volunteer Network

Age-Friendly Communities have “Domains of Livability,” improvements that influence the health and quality of life of older adults



Montgomery County's 10 Age-Friendly Domains

- Domain 1: Civic and Social Involvement
- Domain 2: Communication and Outreach
- Domain 3: Employment
- Domain 4: Elder Abuse Prevention
- Domain 5: Health and Wellness
- Domain 6: Home and Community Based Services
- Domain 7: Housing
- Domain 8: Planning, Open Spaces, Parks, and Community Buildings
- Domain 9: Senior Public Safety
- Domain 10: Transportation and Mobility

Age-Friendly Montgomery: A Community for a Lifetime

A Three-Year Action Plan

Submitted to AARP
August 2018

Approved
October 2018

Valid until
October 2020



Structure: Age-Friendly Montgomery

- **Age-Friendly Montgomery County Advisory Group** (Formerly “Senior Subcabinet on Vital Living”)
 - Chairs: Director, Departments of Recreation and Health and Human Services
 - Members: Department and community leaders, COA
- **10 Domain Work Groups**
 - Chairs: Acting Chief, Aging and Disability Services, DHHS
 - Co-Chairs for each domain : department and community leaders
- **Process:**
 - Quarterly meetings for reports, updates, education
 - Funding: resides in department program areas

Progress Report 2015-2018

Age-Friendly Progress Report 2015-2018

- Changing demographics
- Three-year growth in older resident population
 - 22,000 additional residents 60+
 - 4x faster than residents overall
 - Accounts for 60% of growth in County population
- Accomplishments
- Future Plans

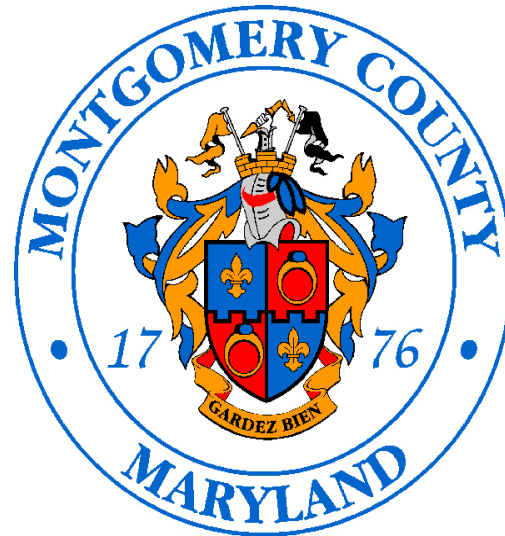


Summary of Steps to Certification

- Senior Leadership Commitment to:
 - Outcomes from two Summits on Aging
 - COA Senior Agenda
 - Commission on Aging: Studies and Recommendations
 - COA recommendation for joining Age Friendly
- Determination of Vision, Domain Missions, Priorities. Action Steps
 - Review/Assessment of efforts and progress over years
 - Restructure areas of focus from 8 to 10 domains
 - Results of online/print surveys and listening sessions with older populations across county, including those in diverse communities
- Review, Assessment of Progress/Impact
- Ability to Refine, Adjust as Needed

Benefits of Age-Friendly Structure

- Results from 2018 Survey of Age-Friendly Members and Partners
 - Appreciation for Age-Friendly approach and structure
 - Increased knowledge of activities across domains
 - Increased ability for inter-group collaboration and cooperation



Challenges

- Need for:
 - Increased public awareness and understanding of County as an Age Friendly Community
 - Increased awareness of/access to County programs and services
 - Ability to communicate and serve all diverse groups and areas of County (and the 170+ languages spoken in County)
 - Increased participation from business community
 - Budget

Domains: Selected Activities and Accomplishments

Communications and Outreach

- Community outreach promoting programs and services
- Enhanced website and information products
- Increased publication translations



Domains: Selected Activities and Accomplishments

• Civic and Social Involvement

- Launched 50+ Volunteer Network linking local organizations with skilled volunteers
- Expanded technology training
- Expanded social/educational programs for diverse older populations
- Robust support for Village movement (25+ in County)



Domains: Selected Activities and Accomplishments

Elder Abuse Prevention

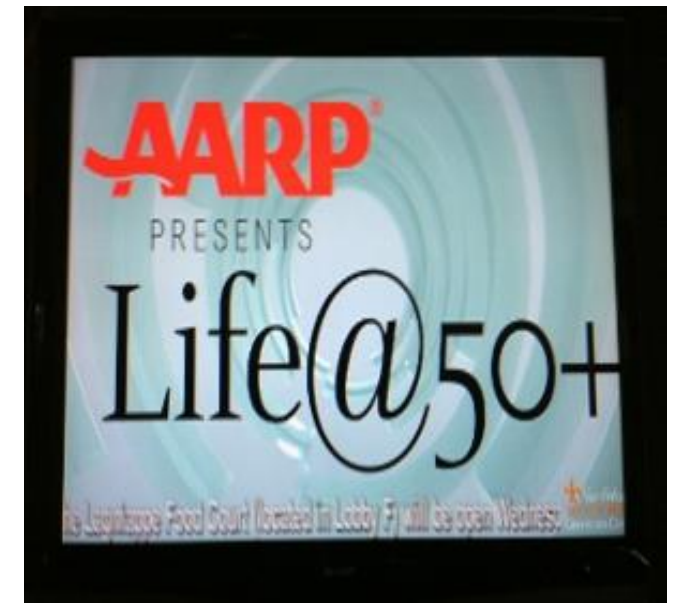
- Enhanced Elder and Vulnerable Adult Abuse Task Force
- Added Crimes Against Seniors and Vulnerable Adults Unit
- Increased successful prosecution of crimes
- Support for World Elder Abuse Awareness Day
- Expanded outreach and education in diverse communities



Domains: Selected Activities and Accomplishments

Employment

- Continued 50+ Employment Expo
- Expanded outreach to community
- Supported first County workshop on ageism in employment
- Worked with local association to create first “Age-Friendly Employer” certification



Domains: Selected Activities and Accomplishments

Health and Wellness

- Multiple medication management and turnback events
- With Fire and Rescue, training emergency responders on medication management issues
- Expansion of 55+ recreation and health promotion activities
- Increased fall prevention programming
- New areas of focus:
 - mild cognitive impairment programs,
 - social isolation



Domains: Selected Activities and Accomplishments

Housing

- Expanding affordable senior rental housing
- Initiating energy efficient program with Habitat for Humanity
- Certification program at Montgomery College for managers of senior residences
- Supporting Design for Life incentives
- Expanding property tax credit for older adults
- Piloting home sharing project



Domains: Selected Activities and Accomplishments

Planning, Open Spaces, Parks, and Community Buildings

- Builder Incentives-Accessible Park amenities
- Park Prescription program in partnership with physicians
- Priority: co-location for senior centers in multi-purpose spaces



Domains: Selected Activities and Accomplishments

• Senior Public Safety

- Increased fire safety outreach and programming
- Increased home safety program inspections
- Increased community education on crime
- Increased emergency planning outreach
- Keeping Seniors Safe Program-outreach on safety issues



Domains: Selected Activities and Accomplishments

• Transportation

- Increased free and reduced fare for bus services
- Increase in wheelchair accessible transportation availability
- Increased education : Connect-A-Ride transportation options
- New on-demand FLEX program: minibuses in community



Where Are We Now?

Current Status-Planning for Recertification

- Review and comment cycle
- Reassessment by each domain
- Continued focus on cross-cutting areas of concern
 - Communication
 - Diversity
 - Housing
 - Transportation
 - A vibrant community for all ages

Emerging Areas of Increased Focus

- Intergenerational activities
- Social Isolation

Looking Forward

- Continued support and collaboration with our Commission on Aging, departments, and community partners
- Growth of community partnerships
- Expanded opportunities for cross-collaboration across Age-Friendly domains
- Support for other Maryland counties working to become Age-Friendly communities
- Support for Age-Friendly Maryland!



For More Information, Contact:

Odile Brunetto. Acting Chief

Aging and Disability Services

Department of Health and Human Services

Odile.brunetto@montgomerycountymd.gov

240 777-4577

Marcia Pruzan, Senior Fellow

[Age-Friendly Montgomery County](#)

Marcia.Pruzan@montgomerycountymd.gov

240 773-8266