

**VISION ZERO**  
ZERO TRAFFIC DEATHS IN MoCo

# VISION ZERO

Implementation Update to MCBAG || October 17, 2024

# What is Vision Zero?

Building Layers of Safety to Prevent Serious and Fatal Injuries on Our Roadways



# The 6 Safe System Principles



---

Death/serious injury  
is unacceptable



---

Humans make  
mistakes



---

Humans are  
vulnerable



---

Responsibility is  
shared



---

Safety is proactive



---

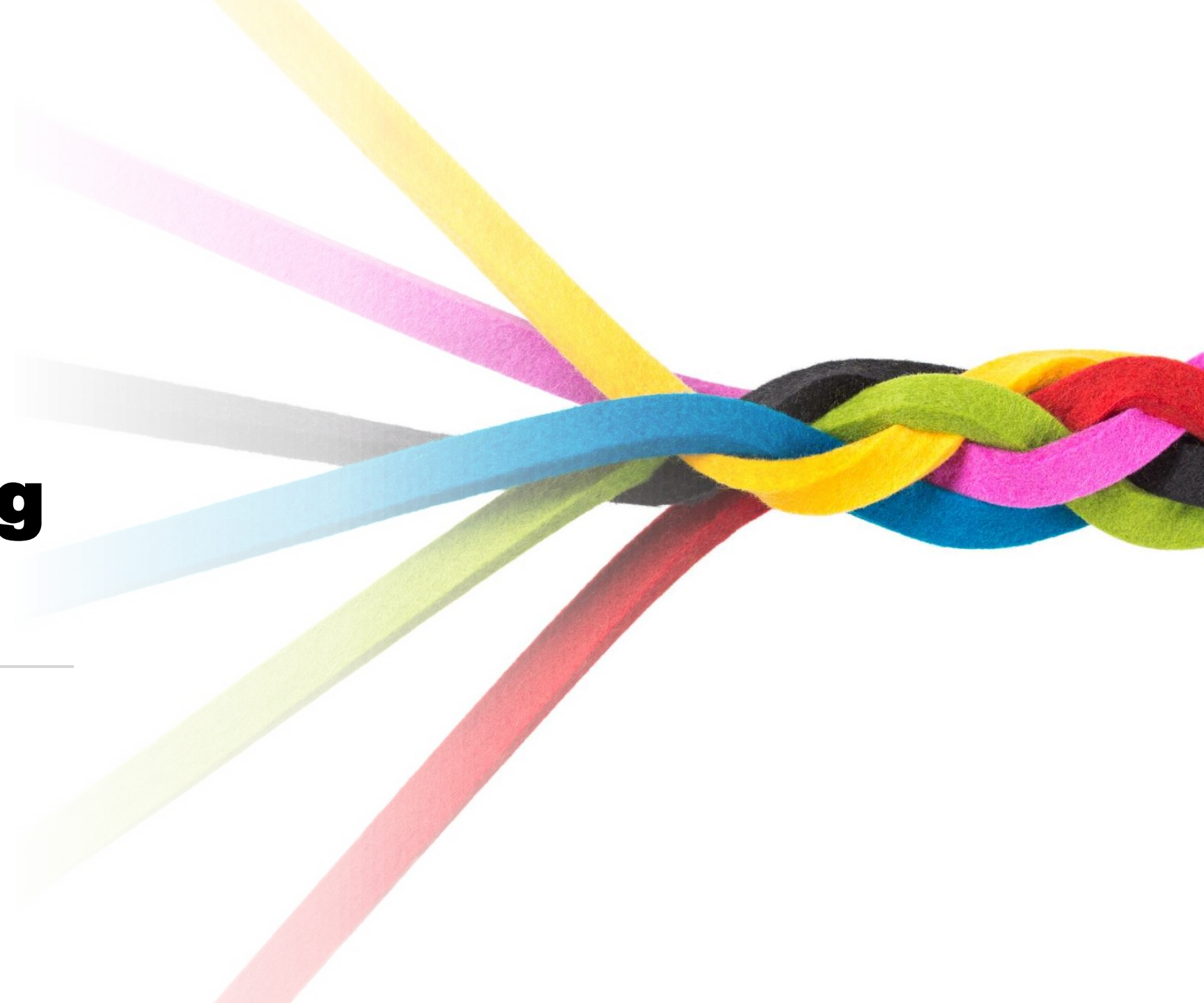
Redundancy  
is crucial



# Implementing Vision Zero

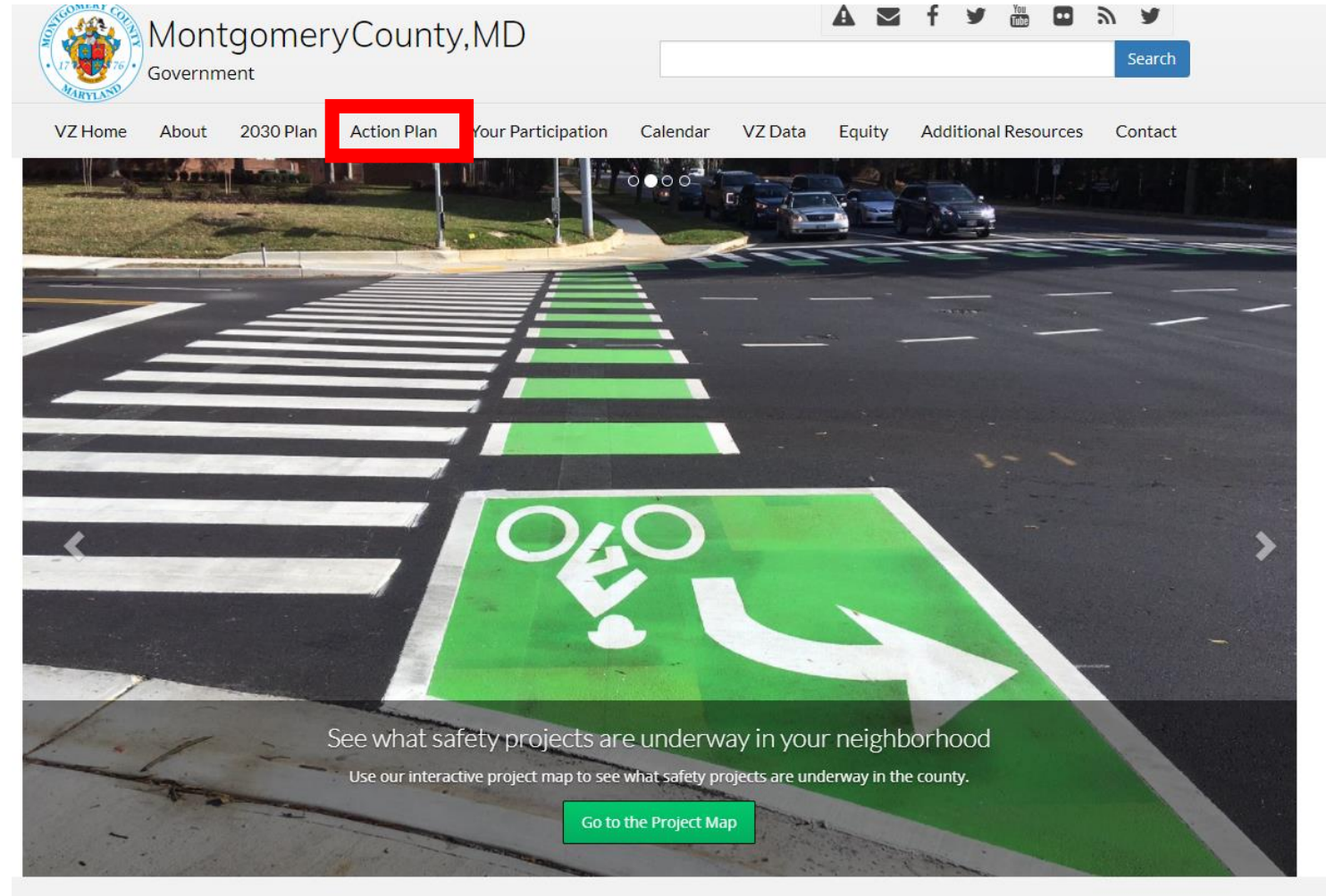
---

FY24-25 Work Plan



# FY24-25 Work Plan

Where can I find the full text of the current two-year work plan?



The screenshot shows the Montgomery County, MD Government website. The header includes the county logo, the text "Montgomery County, MD Government", and a search bar. A navigation menu is located below the header, with the "Action Plan" link highlighted by a red rectangular box. Other menu items include "VZ Home", "About", "2030 Plan", "Your Participation", "Calendar", "VZ Data", "Equity", "Additional Resources", and "Contact". Below the navigation menu is a large banner image of a street with a green-painted bike lane and a white crosswalk. The banner contains the text: "See what safety projects are underway in your neighborhood" and "Use our interactive project map to see what safety projects are underway in the county." A green button labeled "Go to the Project Map" is positioned at the bottom center of the banner.

# ACTION PLAN & WORK PLAN

How the long-term and short-term plans relate

2030 Plan	Vision Zero						
Plan Pillars	Complete Streets		Multimodal Future			Culture of Safety	
Safe System Alignment	Safe Streets	Safe Speeds	Safe Transportation	Safe & Sustainable Communities	Safe Vehicles	Safe People	Safe Post-Crash Emergency Response and Care
Actions	17 Actions	3 Actions	10 Actions	1 Action	2 Actions	10 Actions	2 Actions
FY25 Work Plan	67 Tasks	4 Tasks	17 Tasks	5 Tasks	2 Tasks	18 Tasks	2 Tasks

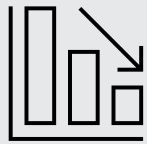
# Priority Action Items

## Top 10 action items

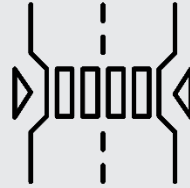
- S-1: High Injury Network Projects
- S-3: Frequent, Protected Crossings
- S-4: Signal Timing and Phasing
- S-7: Separated, Low-Stress Bicycle Facilities
- S-11: Improved Lighting
- S-13: Sidewalk Construction and Upgrades
- M-1: Examine Speed Limit on all Projects
- T-1: Ped and Bike Improvements along New Transportation Projects
- T-2: Transit Stop Safety
- P-4: Ending Impaired Driving Deaths

# FY24 by the Numbers – part 1

Continued advancement of HIN and bikeway projects. With more designs completed in FY24, more reaching construction in FY25.



11% decrease in serious and fatal crashes compared to 2015-2019 5-year annual average



10 high injury network corridors under study, design, or construction



8 pedestrian hybrid beacons and traffic signals installed. 58 since Vision Zero began.



29 bikeway projects underway, 5 under construction



6.7 miles of new sidewalk installed



259 resident engagement events



# FY24 by the Numbers – part 2

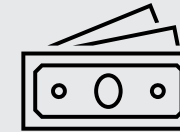
**Bills to expand automated speed enforcement did not pass in 2024 Maryland General Assembly, but after 6 years the Noah’s Law “loophole” was closed.**



1 loophole closed in Noah’s Law to keep more impaired drivers off the road



2 dedicated bus lanes installed on Georgia Avenue and University Boulevard



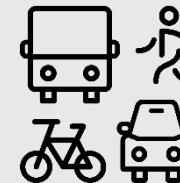
\$9.2 million in federal grant funding secured from Safe Streets and Roads for All



17 walkability audits completed for Safe Routes to School



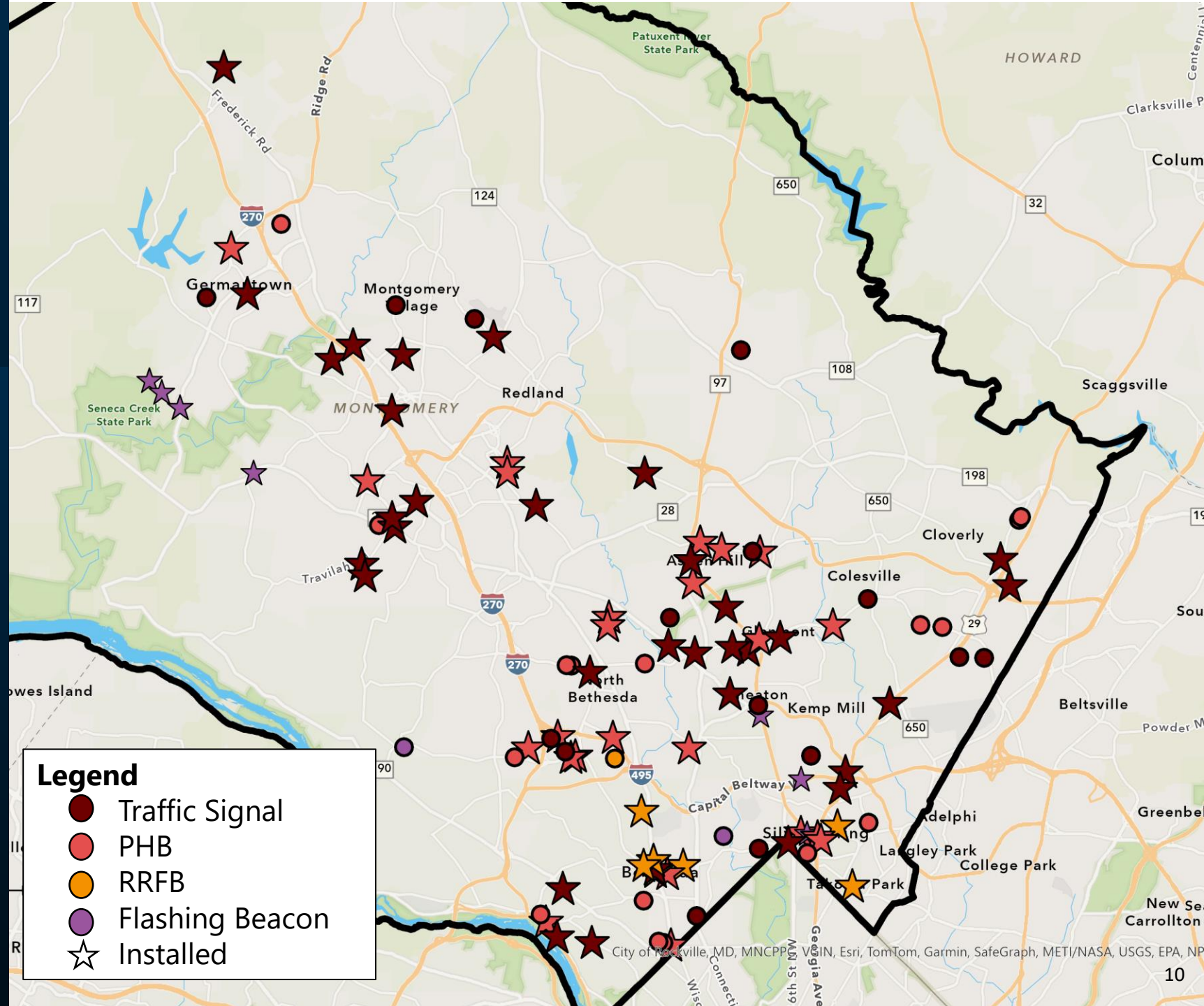
1<sup>st</sup> Safety Day hosted by Vision Zero Youth Ambassadors



5 bikeway projects advancing to connect to Purple Line

Over 50 new installations since Vision Zero started

# NEW SIGNAL AND BEACON INSTALLATIONS



# High Injury Network (HIN)

**Audits of top 10 County routes to be complete in FY25.**

## FY25 Audits:

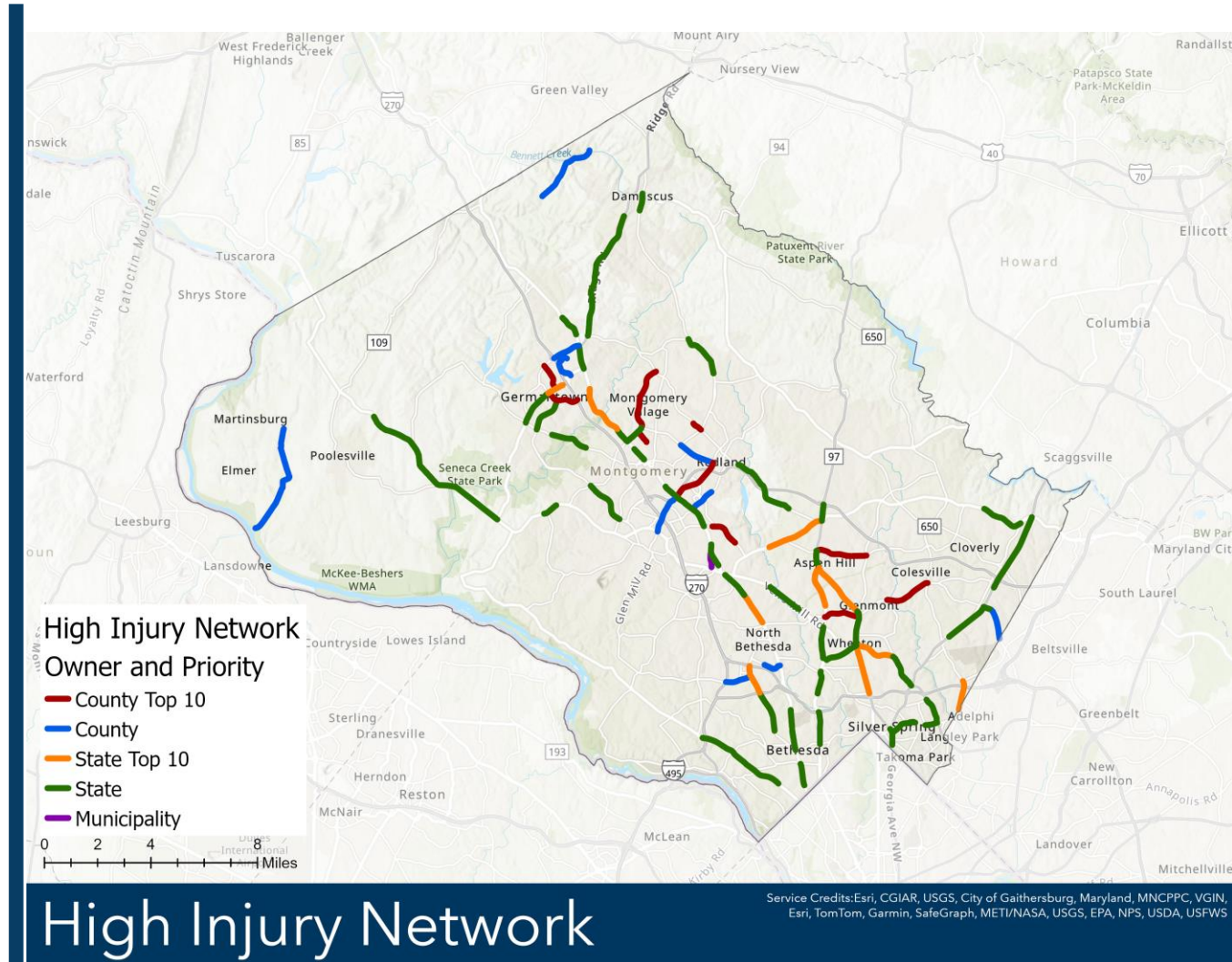
- Randolph Rd from New Hampshire Ave to Glenmont Cir
- Democracy Blvd from Old Georgetown Rd to I-270
- Redland Rd from MD 355 to Belderwood Ln
- E Gude Dr (post construction audit)

## FY25 Design:

- Bel Pre Rd from Layhill Rd to Georgia Ave
- Randolph Rd from Georgia Ave to Connecticut Ave

## FY25 Short- and Mid-Term construction:

- Montgomery Village Ave from Snouffer School Rd to Midcounty Hwy
- Crystal Rock Dr from Father Hurley Blvd to Germantown Rd
- Randolph Rd from Georgia Ave to Connecticut Av



# Purple Line and Bikeway Projects

## Building connections in East County

### Purple Line Construction as of 7/31/24

- Overall 68% complete with service starting winter 2027
- Utility relocations 90% complete

### Bikeways and Shared Use Path Connections

- Capital Crescent Trail 47% complete and opens spring 2026 while Purple Line is undergoing testing.
- Metropolitan Branch Trail Phase 2a under construction.
- Flower Ave Separated Bike Lanes advancing from 35% design.
- Carroll Ave Separated Bike Lanes at 30% design.
- Piney Branch Road Separated Bike Lanes initial concepts under design.



Image by [Purple Line](#).

# Bus Rapid Transit and Bikeway Projects

## Building connections in East County

### Dedicated Bus Lanes

- University Boulevard – March 2024
- Georgia Ave – pilot from June to December 2024
- Shady Grove / Darnestown – September 2024

### Design of Bus Rapid Transit

- Veirs Mill Road BRT and BiPPA – final design expected in early 2025.
- MD 355 – finalize design in 2025.
- US29 Flash Phase 2 – completing 35% design.



# Walkability Studies

## Systematic Review of Walking Area

- 10 – 20 walkability studies completed each fiscal year.
- As of the end of FY24, 83% of MCPS schools with walksheds and outside municipalities have a completed or in progress study.
- Examine the designated walking area for sidewalks, curb ramps, crashes, conflicts at intersection, etc.
- Studies include intensive review of the existing infrastructure plus on-site review of operations during school arrival and dismissal.
- Coordination with school staff and crossing guards.
- Improvement recommendations developed for short-, medium-, and long-term.



# FY25 Walkability Studies

**By the end of FY25, all schools within an Equity Emphasis Area will have a walkability study completed.**

- Flower Valley
- Beverly Farms Elementary School
- Fox Chapel ES
- Highland Elementary School
- Little Bennett ES
- Snowden Farm ES
- Strawberry Knoll ES
- Westover Elementary School
- Woodlin Es
- Clarksburg High School
- Montgomery Blair High School
- Briggs Chaney Middle school
- Herbert Hoover Middle School
- Rocky Hill Middle School
- Flora M Singer ES



# Sidewalks and Safety Improvements at School Walkshed

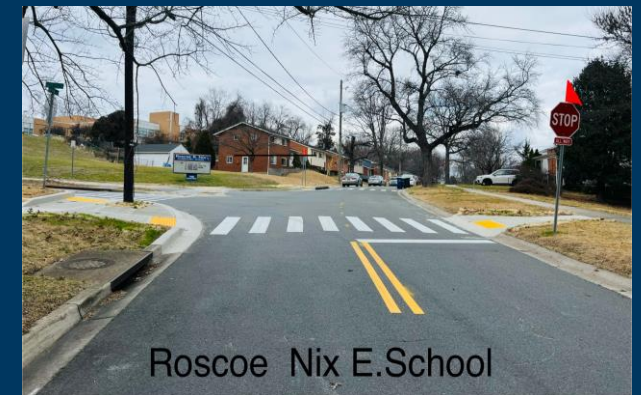
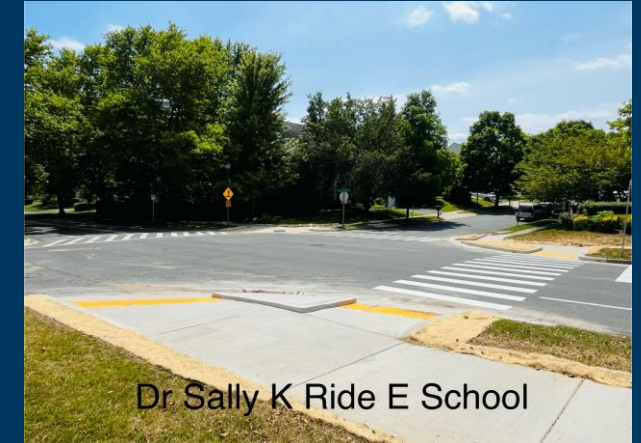
## Recent and Planned Projects

### Recent Projects

- Forest Knolls Elementary – Edgewood, Ladson and Marvin Road
- Roscoe Nix Elementary – Oakview Drive
- Spot gap fills Montgomery Blair along Lexington Drive
- Spot gap fills Hoover Middle along Tuckerman Lane

### FY25 Planned Projects - 9 School Walksheds

- Kensington Parkwood Elementary
- Martin Luther King Jr. Middle
- Lake Seneca Elementary
- Waters Landing Elementary
- Rosemary Hills Elementary
- Rock Creek Forest Elementary (Silver Spring)
- Wheaton Woods Elementary School
- Albert Einstein High School
- Newport Mills Middle School
- Rockview Elementary School





# Automated Enforcement Expansion Plan

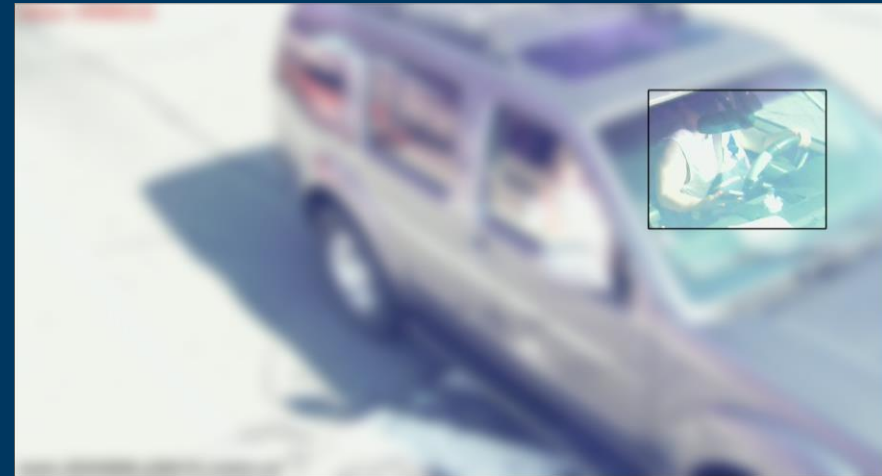
## More sites and new technology

### Recent Expansions

- 5 new red-light and 10 new speed cameras each year.
- 44 new speed locations approved in August.
- Start using red-light cameras as speed cameras where allowed.
- Permitted to use bus lane cameras. Pilot started with WMATA.

### Needing State Law changes

- Using new technology for enforcing seatbelts, mobile phone use, crosswalks, move over law, HOV.
- Allowing speed cameras on High Injury Network.



Examples of mobile phone use captured by distracted driving cameras. At 3 pilot sites, over 780 violations detected in 3 days.



# Education and Outreach Events

Recent Events and Upcoming Schedule





# Vision Zero Youth Ambassadors

# BIKE RODEOS AND LEARN TO RIDE CLASSES



# Holiday Alcohol Task Force

## Promoting Safe Rides Home

- Seven-week task force.
- [Outreach to bars and restaurants](#) with free coasters with safety message.
- Promote [Safe Ride Home page](#) to provide one stop shop for finding sober ride options in Montgomery County.





# Crash Data

---

Recent Trends and  
Comparing to Pre-  
Pandemic Activity



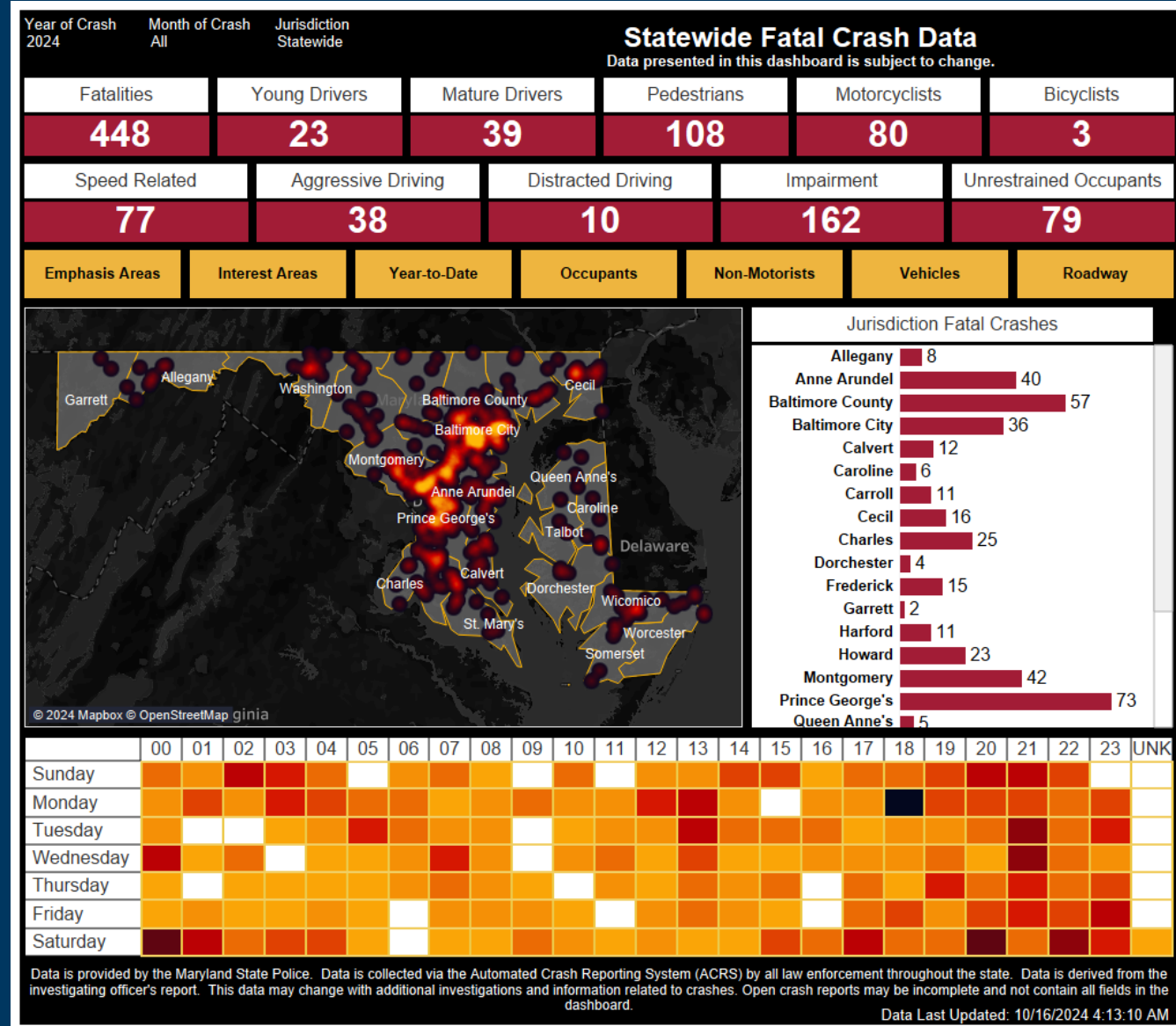
# Finding latest crash and fatality data

## County and State Resources

**Highway Safety Office Fatal Crash Dashboard.** Fatal crashes typically added within 24-48 hours.

**County Monthly Crash Summary.** Updated middle of each month for crashes through the prior month.

**Crash open data.** Raw version of crash data updated weekly.



# Note on the Data Presented

## Roadway Exclusions

The County Government receives crash data from the Maryland State Police (MSP) for the following local police agencies operating in Montgomery County:

- Montgomery County Police (MCPD)
- Rockville City Police Department (RCPD)
- Gaithersburg Police Department (GPD)
- Maryland-National Capital Park Police, Montgomery County (M-NCPPC Police)
- Takoma Park Police (TPPD)

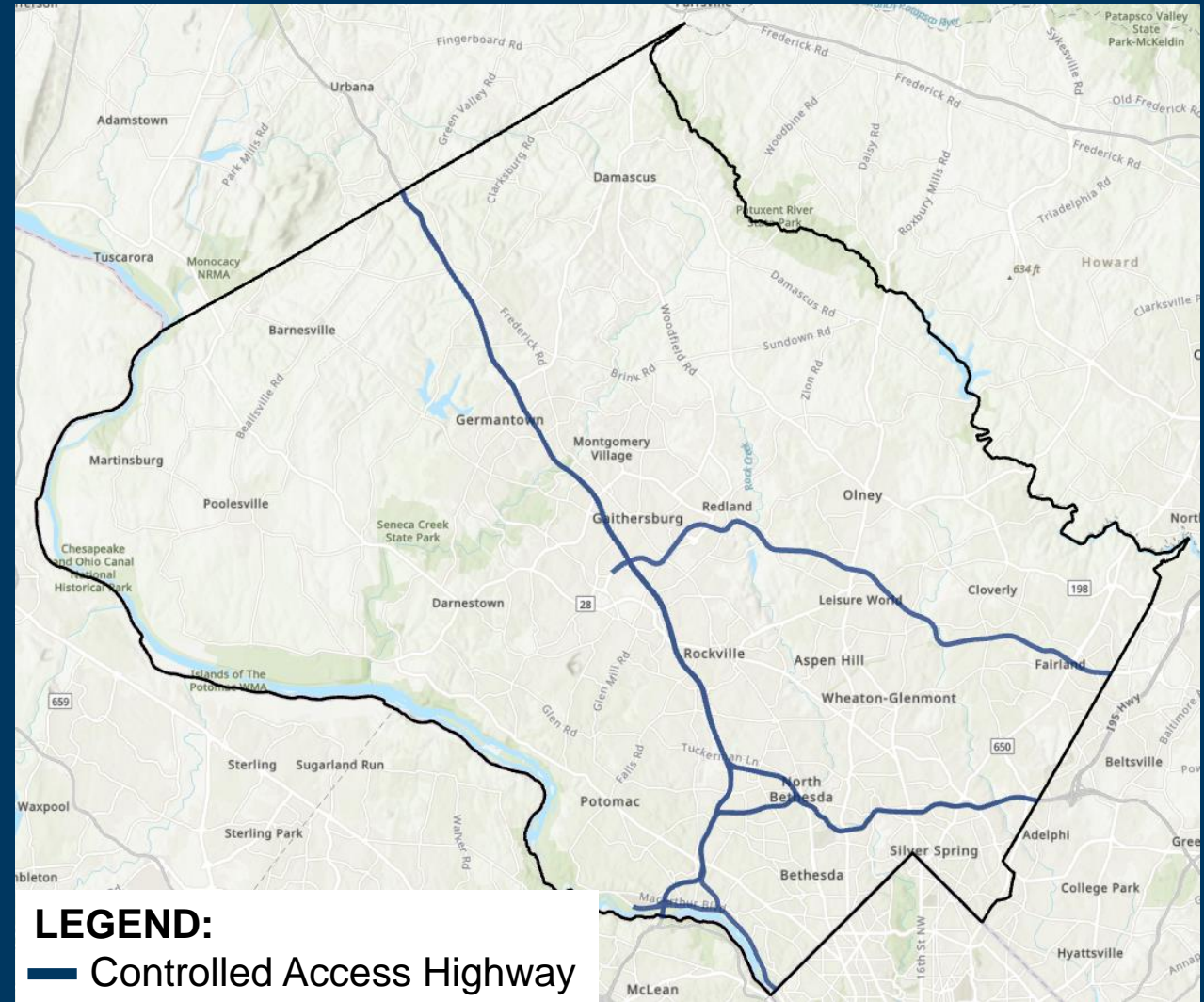
The County Government does not receive data from the following state and federal agencies:

- Maryland State Police (MSP)
- Maryland Transit Authority Police (MTAPD)
- National Park Service Police (NPS PD)

Therefore, the following roadways are excluded from County Government reporting.

- Interstates (I-270, I-370, I-495)
- Intercounty Connector (MD-200)
- National Park Service roads (Clara Barton Parkway and minor access roads)

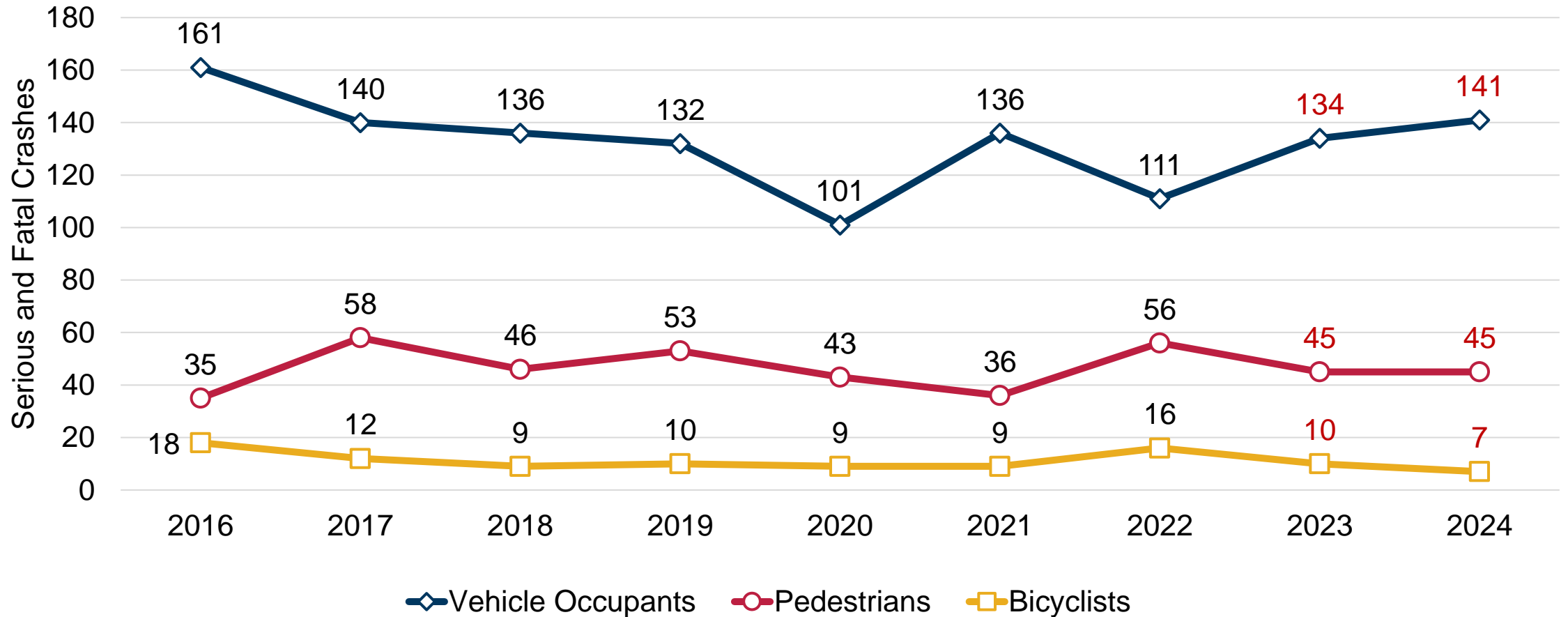
For final reports covering all roadways, see reporting from the Maryland Department of Transportation – Highway Safety Office at:  
<https://zerodeathsmd.gov/resources/crashdata/>





# Serious and Fatal Crashes

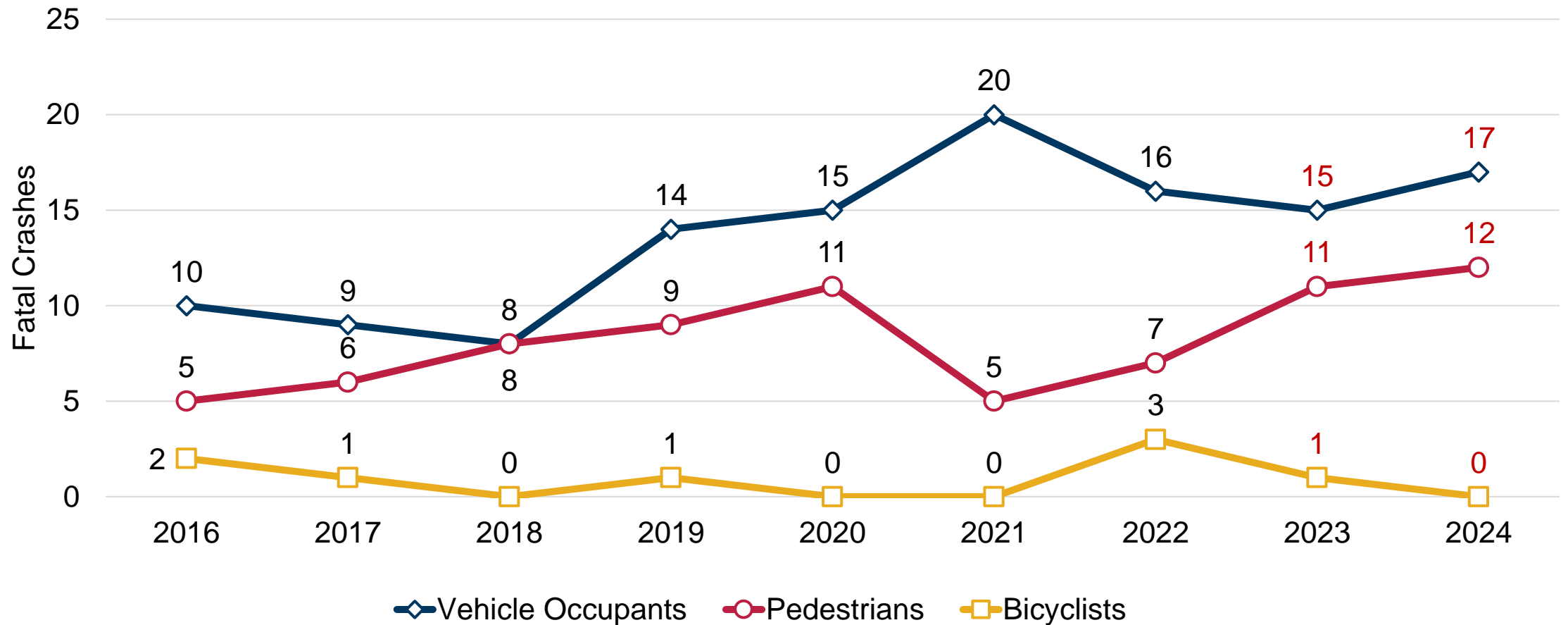
Comparing **January 1 – September 30** for each year



Source: MCPD. Includes MCPD, RPD, TPPD, GPD, and M-NCPPC MC reports. Data retrieved 10/16/24. Includes crashes where at least one party suffered serious or fatal injuries. **2023 and 2024 data are preliminary.**

# Fatal Crashes

Comparing **January 1 – September 30** for each year.



Source: MCPD. Includes MCPD, RPD, TPPD, GPD, and M-NCPPC MC reports. Data retrieved 10/16/24. Includes crashes where at least one party suffered serious or fatal injuries. **2023 and 2024 data are preliminary.**

# Pedestrian Involved Crashes

**334 pedestrian involved crashes year-to-date. 10% below this point last year and 1% above the pre-COVID average.**

Highest Injury Level	2024 Jan-Sep	2023 Jan-Sep	2019-2023 Avg. Jan-Sep	2016-2019 Avg. Jan – Sep	% Change from 2023	% Change from 5-yr. Avg.	% Change from pre-COVID Avg.
No Injury	30	28	17	14	+7%	+76%	+114%
Minor Injury	259	298	238	269	-13%	+9%	-4%
Serious Injury	33	34	38	41	-3%	-13%	-20%
Fatal	12	11	9	7	+9%	+33%	+71%
<b>Total Crashes</b>	<b>334</b>	<b>371</b>	<b>302</b>	<b>331</b>	<b>-10%</b>	<b>+11%</b>	<b>+1%</b>

NOTES:

- **Red Text** = The number is preliminary and subject to change. Data as of 10/16/24.
- Includes reports from MCPD, RCPD, GCPD, M-NCPPC Police, and TPPD.

# Cyclist Involved Crashes

**99 cyclist involved crashes year-to-date, 1 more than this point in 2023 and six fewer than the pre-COVID average.**

Highest Injury Level	2024 Jan-Sep	2023 Jan-Sep	2019-2023 Avg. Jan-Sep	2016-2019 Avg. Jan – Sep	% Change from 2023	% Change from 5-yr. Avg.	% Change from pre-COVID Avg.
No Injury	19	10	12	12	+90%	+58%	+58%
Minor Injury	73	78	75	81	-6%	-3%	-10%
Serious Injury	7	9	10	11	-22%	-30%	-36%
Fatal	0	1	2	1	-100%	-100%	-100%
<b>Total Crashes</b>	<b>99</b>	<b>98</b>	<b>99</b>	<b>105</b>	<b>+1%</b>	<b>0%</b>	<b>-6%</b>

**NOTES:**

- **Red Text** = The number is preliminary and subject to change. Data as of 10/16/24.
- Includes reports from MCPD, RCPD, GCPD, M-NCPPC Police, and TPPD.

# Scooter Involved Crashes

**32 scooter involved crashes year-to-date. New category of non-motorist starting in 2024, so prior year comparisons are not available.**

Highest Injury Level	2024 Jan-Sep	2023 Jan-Sep	2019-2023 Avg. Jan-Sep	2016-2019 Avg. Jan – Sep	% Change from 2023	% Change from 5-yr. Avg.	% Change from pre-COVID Avg.
No Injury	4						
Minor Injury	26						
Serious Injury	2						
Fatal	0						
<b>Total Crashes</b>	<b>32</b>						

**NOTES:**

- **Red Text** = The number is preliminary and subject to change. Data as of 10/16/24.
- Includes reports from MCPD, RCPD, GCPD, M-NCPPC Police, and TPPD.
- New in 2024, electric and non-electric scooters are a new non-motorist type and now shown as a separate category.



**THANK YOU!**

Wade Holland, Vision Zero Coordinator

Wade.Holland@MontgomeryCountyMD.gov