

VISION ZERO
ZERO TRAFFIC DEATHS IN MoCo

VISION ZERO

Implementation Update to N. Bethesda TMD || October 30, 2024

What is Vision Zero?

Building Layers of Safety to Prevent Serious and Fatal Injuries on Our Roadways



The 6 Safe System Principles



Death/serious injury
is unacceptable



Humans make
mistakes



Humans are
vulnerable



Responsibility is
shared



Safety is proactive

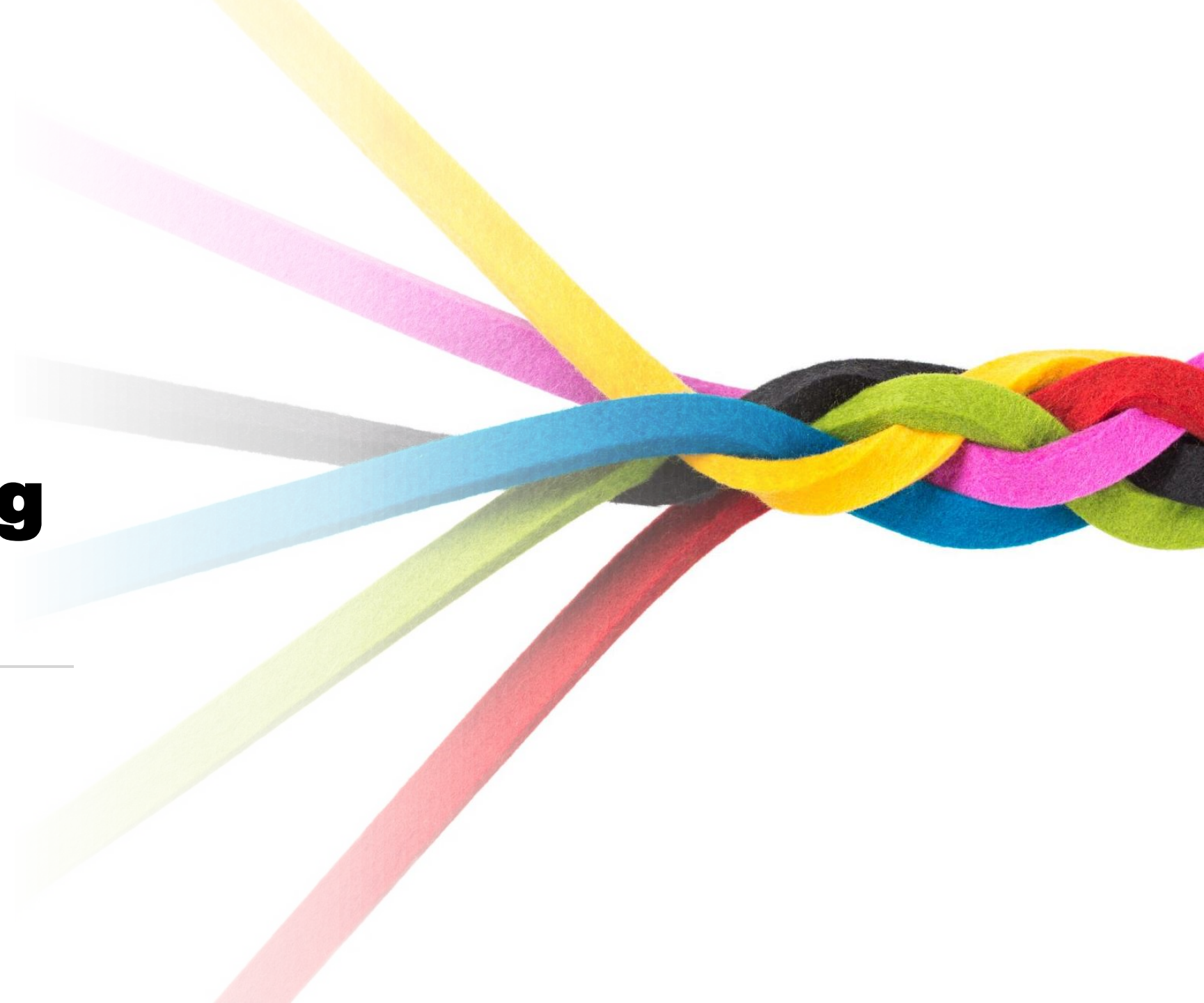


Redundancy
is crucial



Implementing Vision Zero


FY24-25 Work Plan



FY24-25 Work Plan

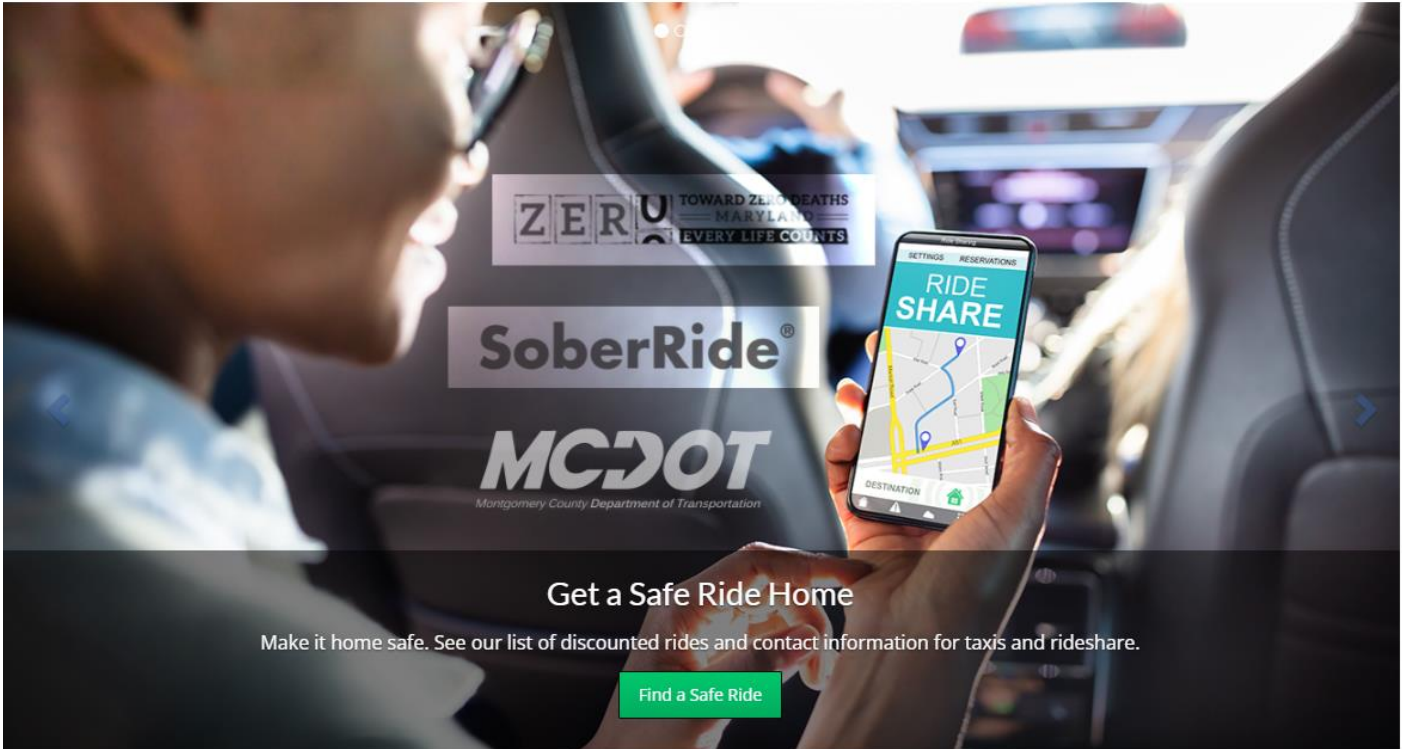
Where can I find the full text of the current two-year work plan?

An official website of [Montgomery County, Maryland](#) MC311

 **Vision Zero**

Translate

[Home](#) [About](#) **[Plan and Reports](#)** [Get Involved](#) [Updates](#) [Data](#) [Additional Resources](#) [Contact](#)



Get a Safe Ride Home
Make it home safe. See our list of discounted rides and contact information for taxis and rideshare.

[Find a Safe Ride](#)

ACTION PLAN & WORK PLAN

How the long-term and short-term plans relate

2030 Plan	Vision Zero						
Plan Pillars	Complete Streets		Multimodal Future			Culture of Safety	
Safe System Alignment	Safe Streets	Safe Speeds	Safe Transportation	Safe & Sustainable Communities	Safe Vehicles	Safe People	Safe Post-Crash Emergency Response and Care
Actions	17 Actions	3 Actions	10 Actions	1 Action	2 Actions	10 Actions	2 Actions
FY25 Work Plan	65 Tasks	4 Tasks	17 Tasks	5 Tasks	2 Tasks	18 Tasks	2 Tasks

Priority Action Items

Top 10 action items

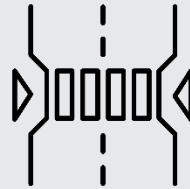
- S-1: High Injury Network Projects
- S-3: Frequent, Protected Crossings
- S-4: Signal Timing and Phasing
- S-7: Separated, Low-Stress Bicycle Facilities
- S-11: Improved Lighting
- S-13: Sidewalk Construction and Upgrades
- M-1: Examine Speed Limit on all Projects
- T-1: Ped and Bike Improvements along New Transportation Projects
- T-2: Transit Stop Safety
- P-4: Ending Impaired Driving Deaths

FY24 by the Numbers – part 1

Continued advancement of HIN and bikeway projects. With more designs completed in FY24, more reaching construction in FY25.



11% decrease in serious and fatal crashes compared to 2015-2019 5-year annual average



10 high injury network corridors under study, design, or construction



8 pedestrian hybrid beacons and traffic signals installed. 58 since Vision Zero began.



29 bikeway projects underway, 5 under construction



6.7 miles of new sidewalk installed



259 resident engagement events

FY24 by the Numbers – part 2

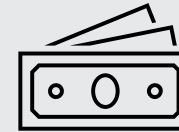
Bills to expand automated speed enforcement did not pass in 2024 Maryland General Assembly, but after 6 years the Noah’s Law “loophole” was closed.



1 loophole closed in Noah’s Law to keep more impaired drivers off the road



2 dedicated bus lanes installed on Georgia Avenue and University Boulevard



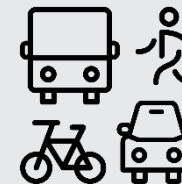
\$9.2 million in federal grant funding secured from Safe Streets and Roads for All



17 walkability audits completed for Safe Routes to School



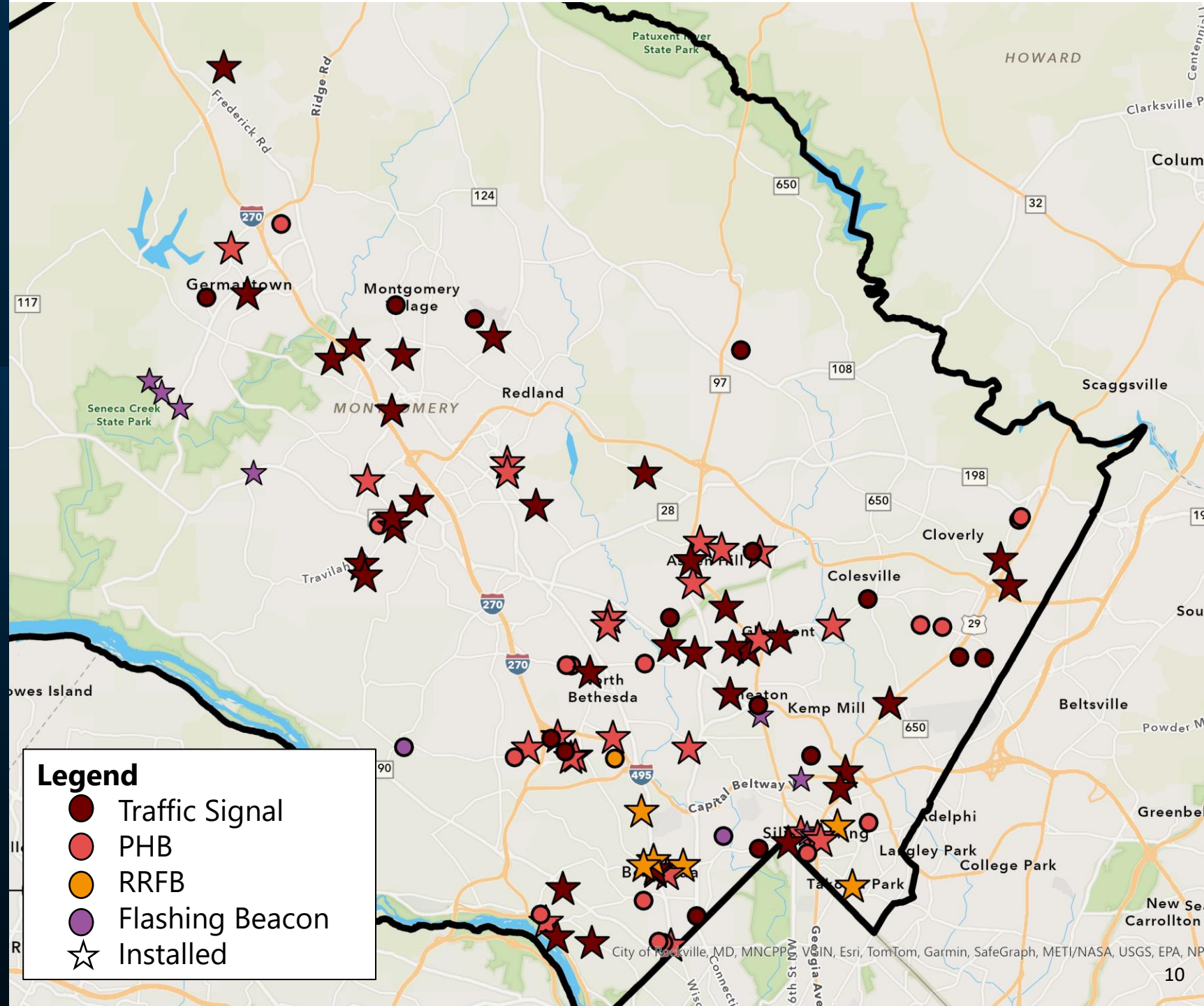
1st Safety Day hosted by Vision Zero Youth Ambassadors



5 bikeway projects advancing to connect to Purple Line

Over 50 new installations since Vision Zero started

NEW SIGNAL AND BEACON INSTALLATIONS

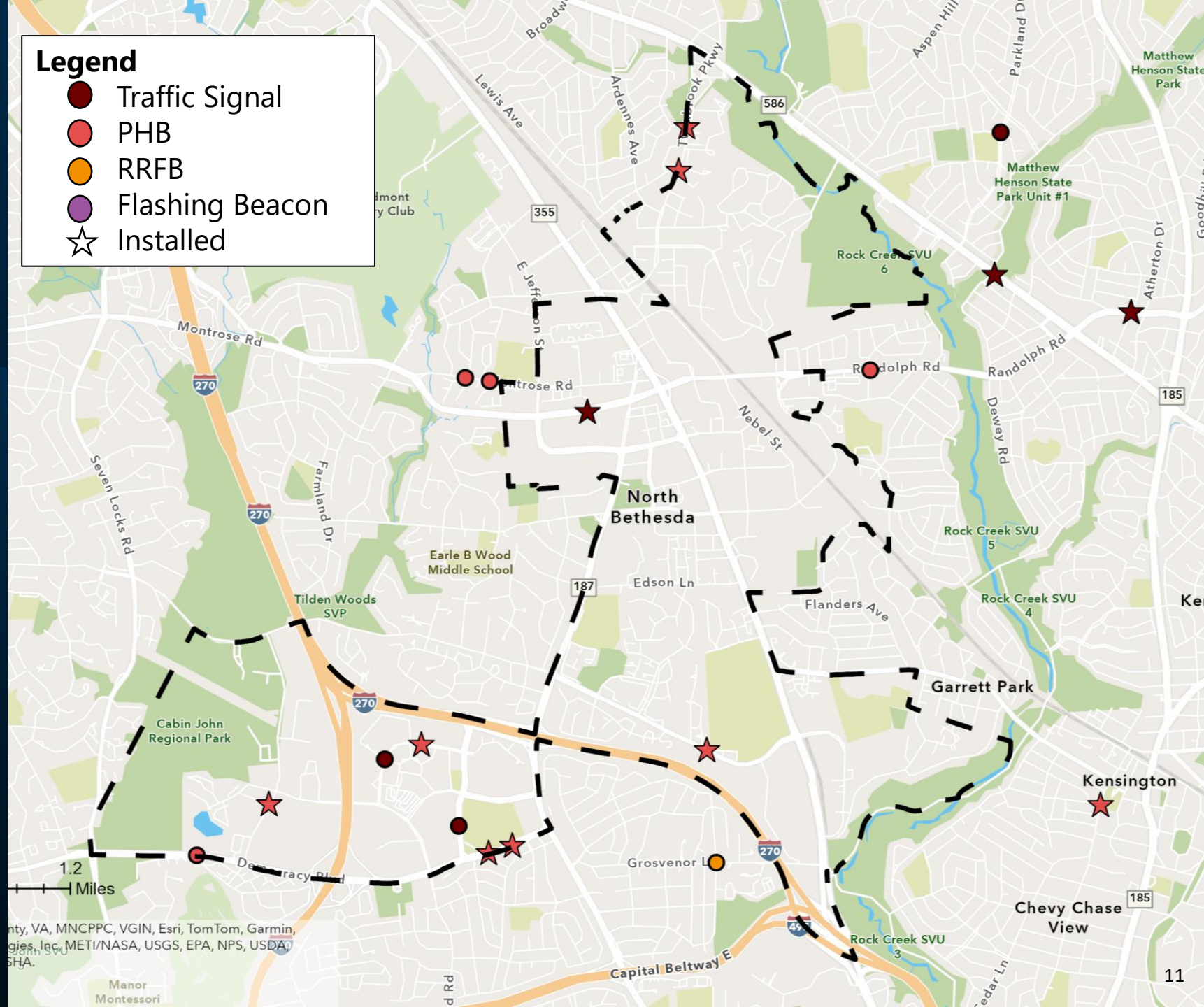


7 PHB installations in NBTMD since Vision Zero started

NEW SIGNAL AND BEACON INSTALLATIONS IN NORTH BETHESDA TMD

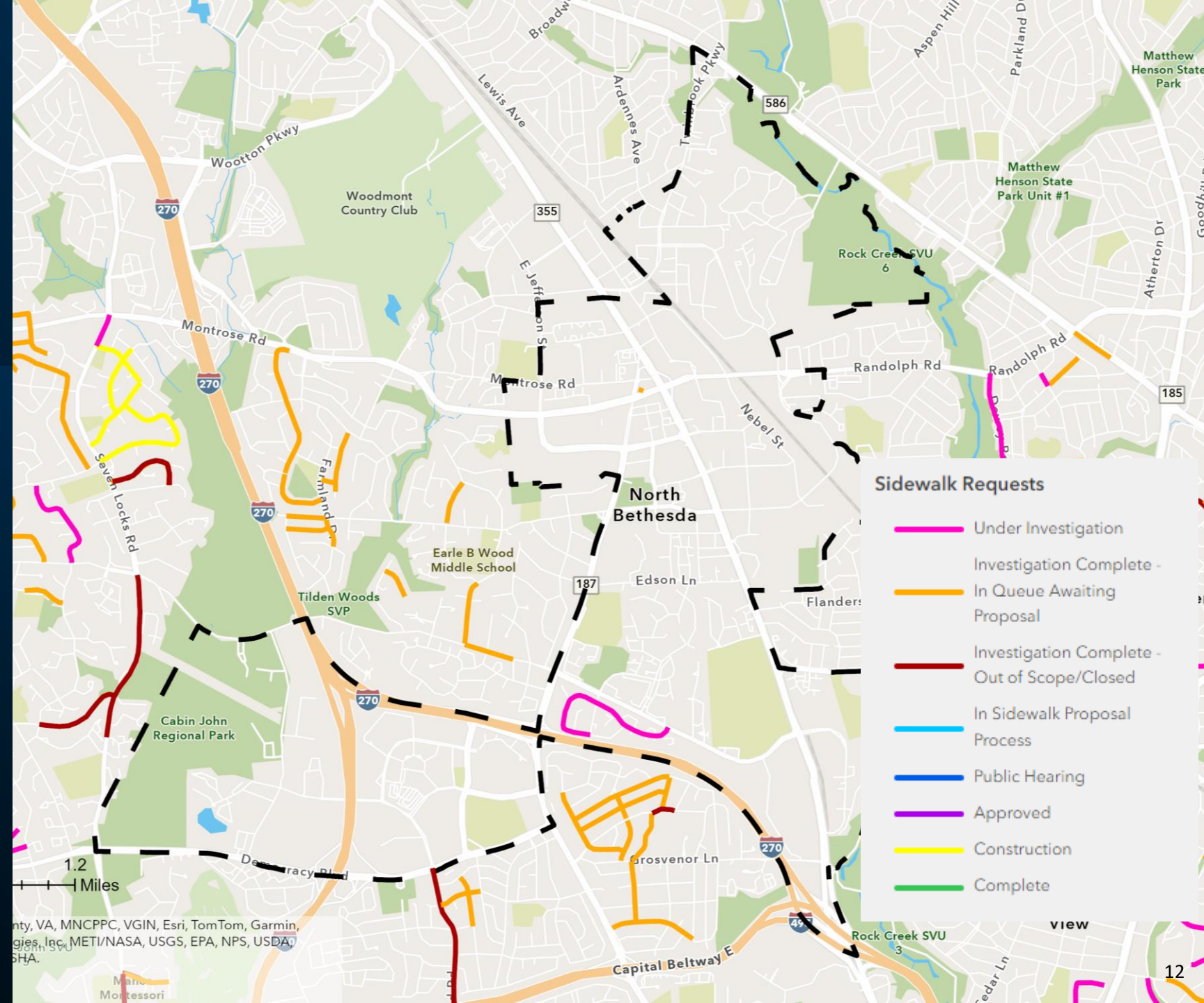
Legend

- Traffic Signal
- PHB
- RRFB
- Flashing Beacon
- ☆ Installed



Active projects south and east of TMD boundary

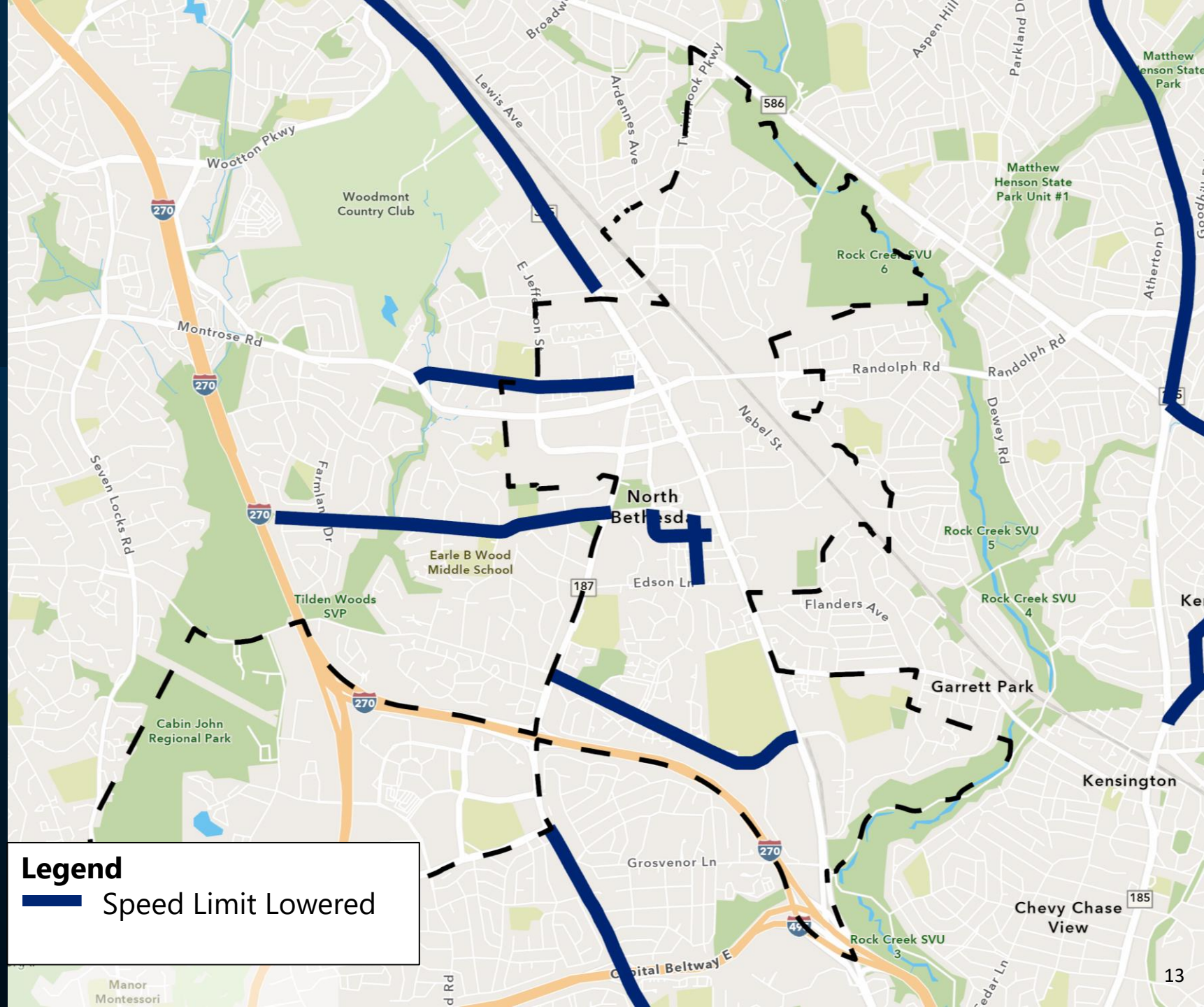
SIDEWALK REQUESTS IN NORTH BETHESDA TMD



County, VA, MNCPPC, VGIN, Esri, TomTom, Garmin, Google, Inc, METI/NASA, USGS, EPA, NPS, USDAO, SHA.

Major roads including Rockville Pike and Old Georgetown Road have speed limits reduced to better match surrounding land use

LOWERED SPEED LIMITS IN NORTH BETHESDA TMD



Legend
— Speed Limit Lowered

High Injury Network (HIN)

Audits of top 10 County routes to be complete in FY25.

FY25 Audits:

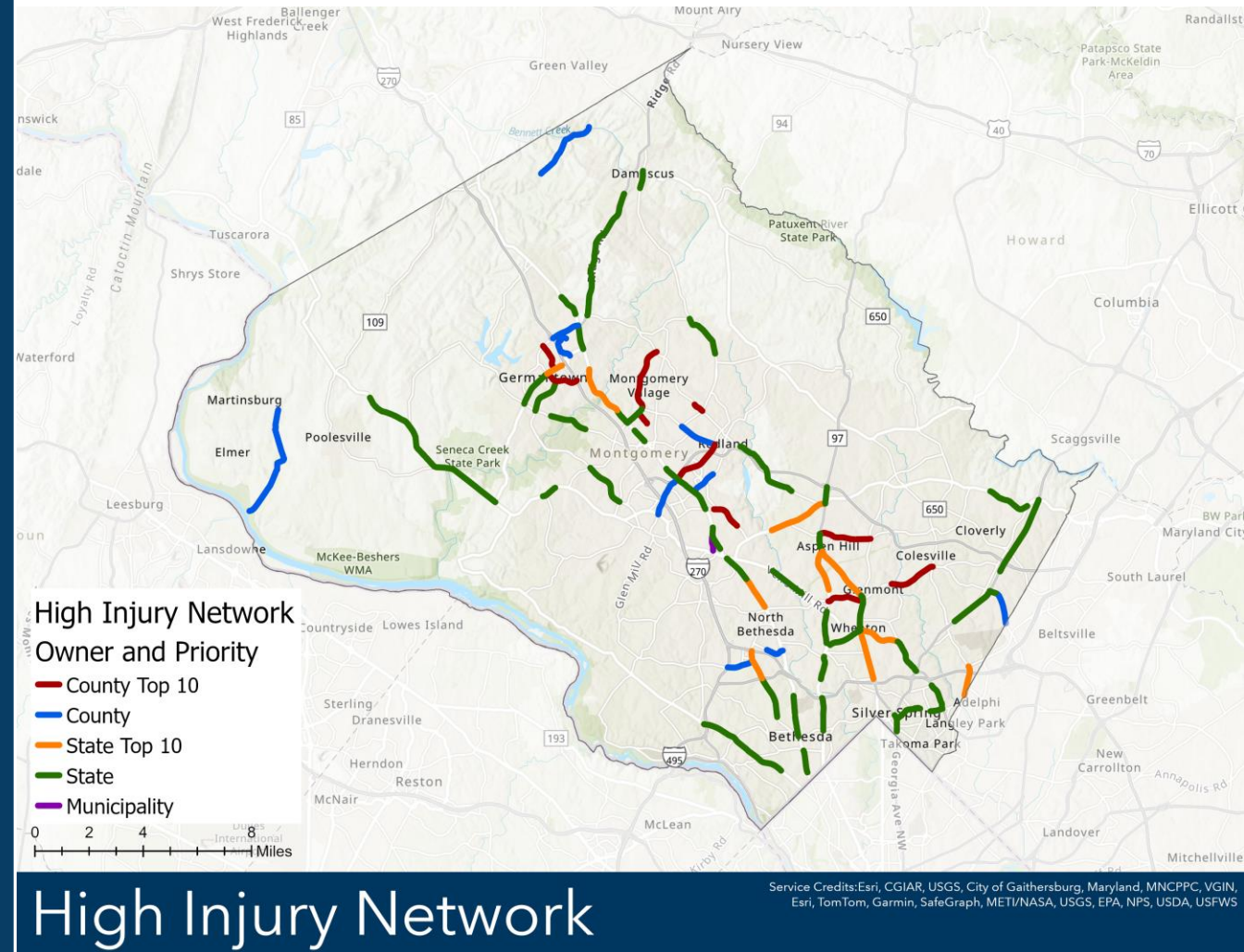
- Democracy Blvd from Old Georgetown Rd to I-270
- Randolph Rd from New Hampshire Ave to Glenmont Cir
- Redland Rd from MD 355 to Baderwood Ln
- E Gude Dr (post construction audit)

FY25 Design:

- Bel Pre Rd from Layhill Rd to Georgia Ave
- Randolph Rd from Georgia Ave to Connecticut Ave

FY25 Short- and Mid-Term construction:

- Montgomery Village Ave from Snouffer School Rd to Midcounty Hwy
- Crystal Rock Dr from Father Hurley Blvd to Germantown Rd
- Randolph Rd from Georgia Ave to Connecticut Av



Purple Line and Bikeway Projects

Building connections in East County

Purple Line Construction as of 7/31/24

- Overall 68% complete with service starting winter 2027
- Utility relocations 90% complete

Bikeways and Shared Use Path Connections

- Capital Crescent Trail 47% complete and opens spring 2026 while Purple Line is undergoing testing.
- Metropolitan Branch Trail Phase 2a under construction.
- Flower Ave Separated Bike Lanes advancing from 35% design.
- Carroll Ave Separated Bike Lanes at 30% design.
- Piney Branch Road Separated Bike Lanes initial concepts under design.



Image by [Purple Line](#).

Bus Rapid Transit and Bikeway Projects

Building connections in East County

Dedicated Bus Lanes

- University Boulevard – March 2024
- Georgia Ave – pilot from June to December 2024
- Shady Grove / Darnestown – September 2024

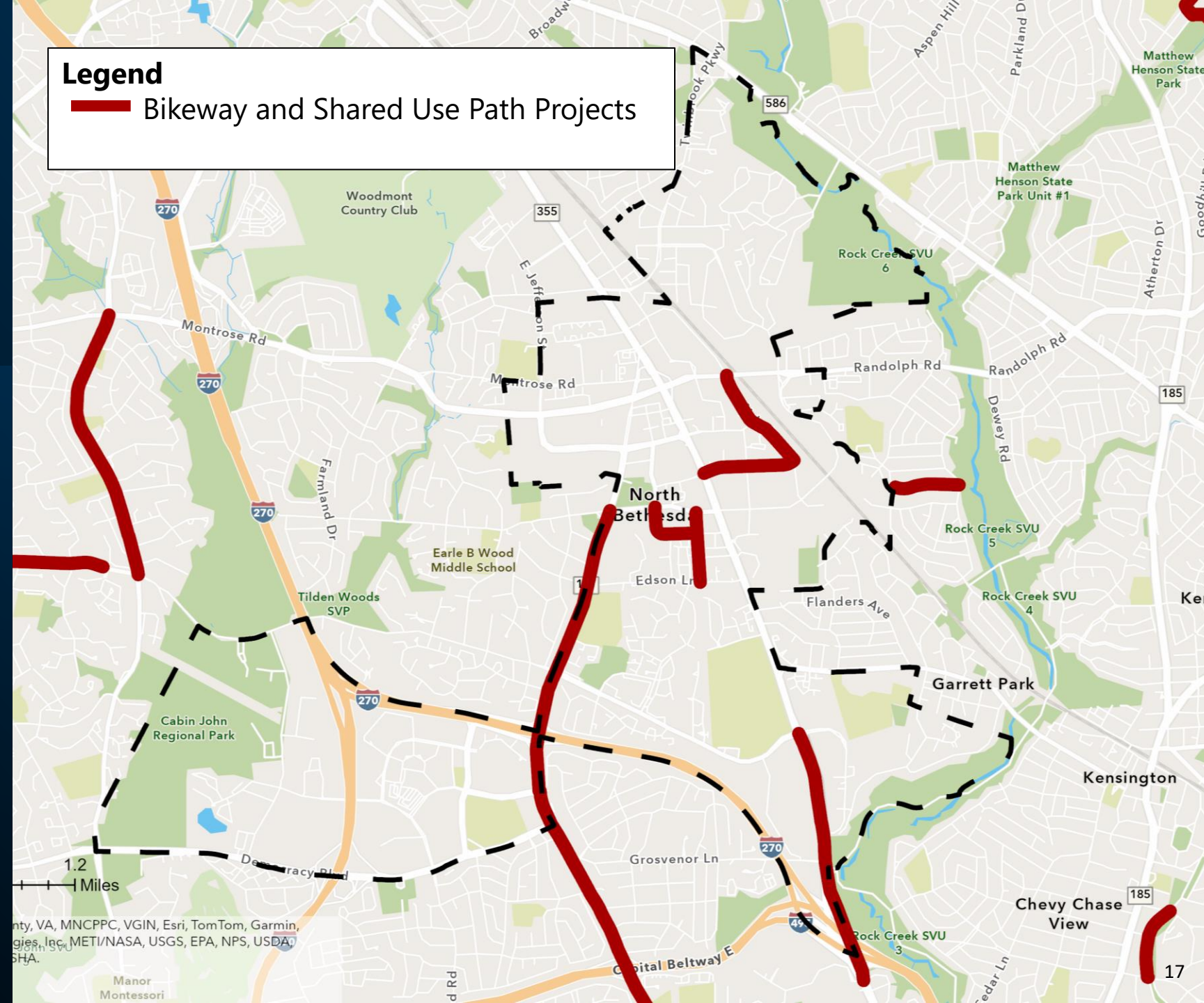
Design of Bus Rapid Transit

- Veirs Mill Road BRT and BiPPA – final design expected in early 2025.
- MD 355 – finalize design in 2025.
- US29 Flash Phase 2 – completing 35% design.



Marinelli Rd Bikeway
and Rockville Pike
Shared Use Path next
for construction

BIKEWAY PROJECTS IN NORTH BETHESDA TMD



Walkability Studies

Systematic Review of Walking Area

- 10 – 20 walkability studies completed each fiscal year.
- As of the end of FY24, 83% of MCPS schools with walksheds and outside municipalities have a completed or in progress study.
- Examine the designated walking area for sidewalks, curb ramps, crashes, conflicts at intersection, etc.
- Studies include intensive review of the existing infrastructure plus on-site review of operations during school arrival and dismissal.
- Coordination with school staff and crossing guards.
- Improvement recommendations developed for short-, medium-, and long-term.



FY25 Walkability Studies

By the end of FY25, all schools within an Equity Emphasis Area will have a walkability study completed.

- Flower Valley
- Beverly Farms Elementary School
- Fox Chapel ES
- Highland Elementary School
- Little Bennett ES
- Snowden Farm ES
- Strawberry Knoll ES
- Westover Elementary School
- Woodlin Es
- Clarksburg High School
- Montgomery Blair High School
- Briggs Chaney Middle school
- Herbert Hoover Middle School
- Rocky Hill Middle School
- Flora M Singer ES



Sidewalks and Safety Improvements at School Walkshed

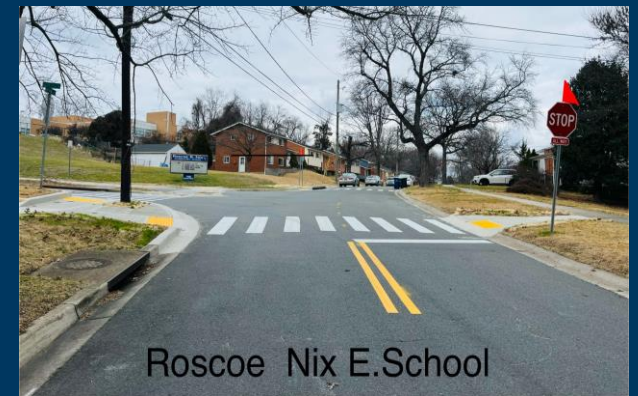
Recent and Planned Projects

Recent Projects

- Forest Knolls Elementary – Edgewood, Ladson and Marvin Road
- Roscoe Nix Elementary – Oakview Drive
- Spot gap fills Montgomery Blair along Lexington Drive
- Spot gap fills Hoover Middle along Tuckerman Lane

FY25 Planned Projects - 9 School Walksheds

- Kensington Parkwood Elementary
- Martin Luther King Jr. Middle
- Lake Seneca Elementary
- Waters Landing Elementary
- Rosemary Hills Elementary
- Rock Creek Forest Elementary (Silver Spring)
- Wheaton Woods Elementary School
- Albert Einstein High School
- Newport Mills Middle School
- Rockview Elementary School



Automated Enforcement Expansion Plan

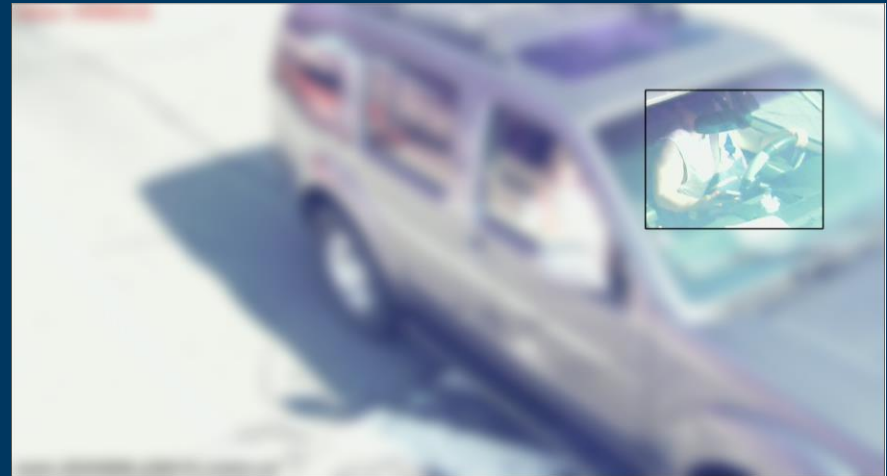
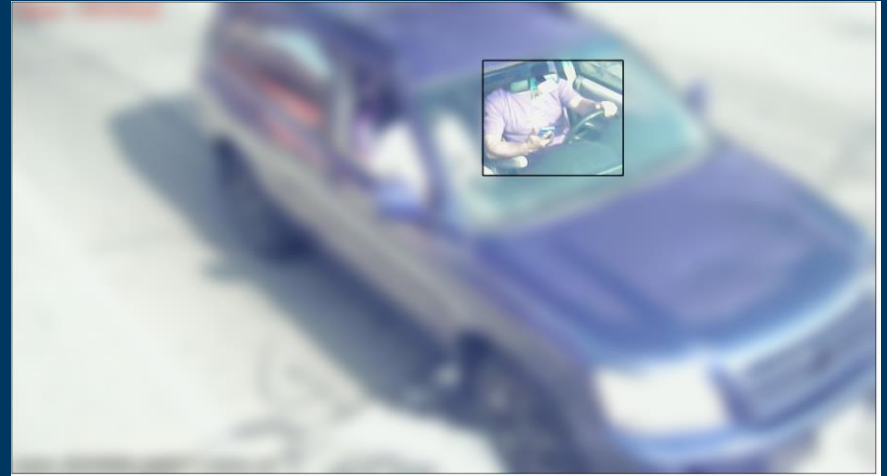
More sites and new technology

Recent Expansions

- 5 new red-light and 10 new speed cameras each year.
- 44 new speed locations approved in August.
- Start using red-light cameras as speed cameras where allowed.
- Permitted to use bus lane cameras. Pilot started with WMATA.

Needing State Law changes

- Using new technology for enforcing seatbelts, mobile phone use, crosswalks, move over law, HOV.
- Allowing speed cameras on High Injury Network.



Examples of mobile phone use captured by distracted driving cameras. At 3 pilot sites, over 780 violations detected in 3 days.



Education and Outreach Events

Recent Events and Upcoming Schedule





Vision Zero Youth Ambassadors

BIKE RODEOS AND LEARN TO RIDE CLASSES



Holiday Alcohol Task Force

Promoting Safe Rides Home

- Seven-week task force.
- [Outreach to bars and restaurants](#) with free coasters with safety message.
- Promote [Safe Ride Home page](#) to provide one stop shop for finding sober ride options in Montgomery County.





Crash Data

Recent Trends and
Comparing to Pre-
Pandemic Activity



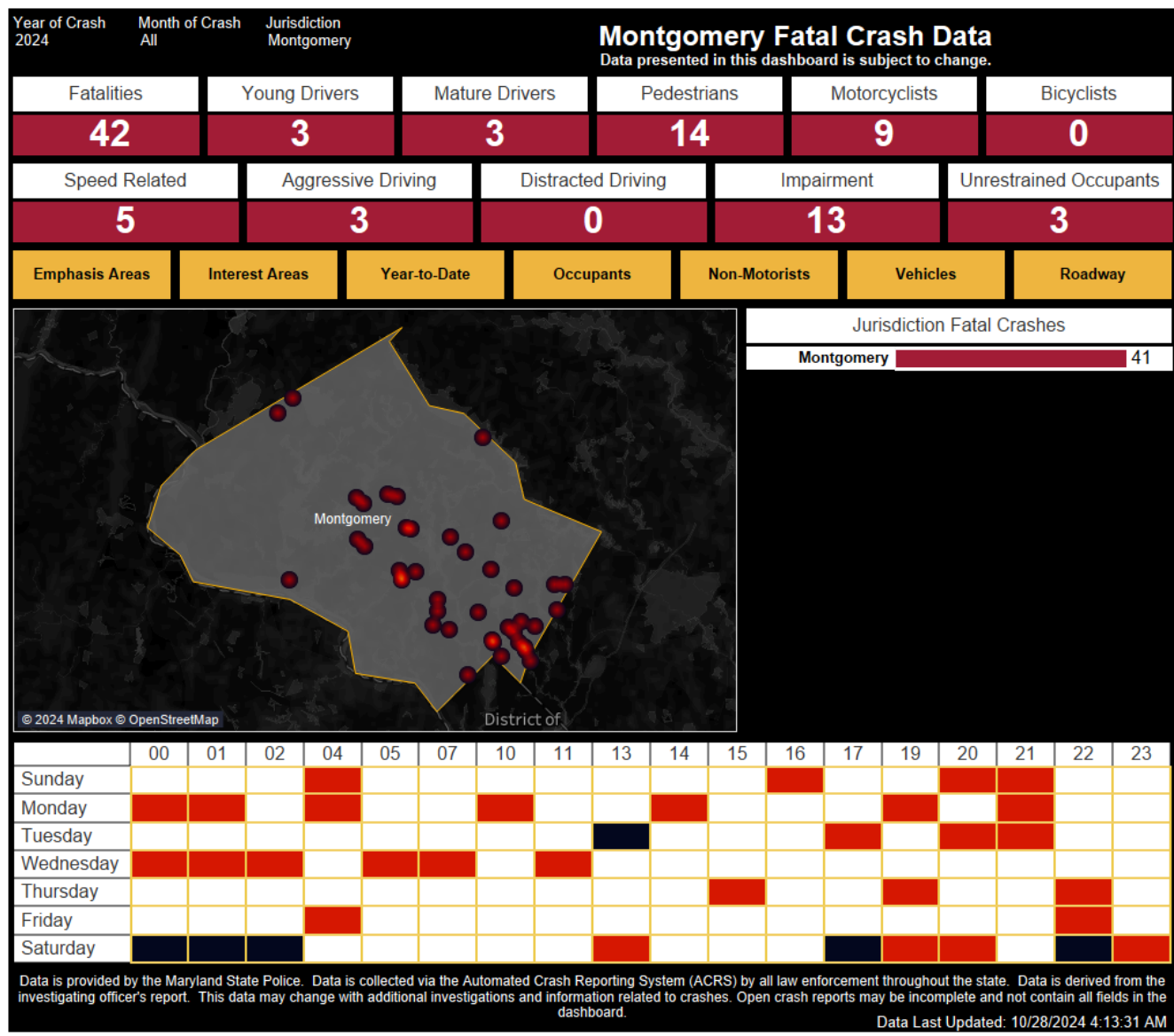
Finding latest crash and fatality data

County and State Resources

Highway Safety Office Fatal Crash Dashboard. Fatal crashes typically added within 24-48 hours.

County Monthly Crash Summary. Updated middle of each month for crashes through the prior month.

Crash open data. Raw version of crash data updated weekly.





THANK YOU!

Wade Holland, Vision Zero Coordinator

Wade.Holland@MontgomeryCountyMD.gov