

**VISION ZERO**  
**ZERO TRAFFIC DEATHS IN MoCo**

# **VISION ZERO**

Update to Rockville Bicycle Advisory Committee - December 4, 2024

# INTERGOVERNMENTAL COORDINATION ON VISION ZERO

Different Names and Interim Targets, Same End Goal



# What does the County Government provide within municipalities in relation to Vision Zero?

## County Government

- Public Schools
- Fire and Rescue Service
- Ride On bus service
- Fatal crash investigation (State Police investigate on I-270)
- Safe Routes to School education and outreach events
- Quarterly forum with city, county, and state staff working on Vision Zero
- Development and construction of MD 355 Bus Rapid Transit

## City of Rockville

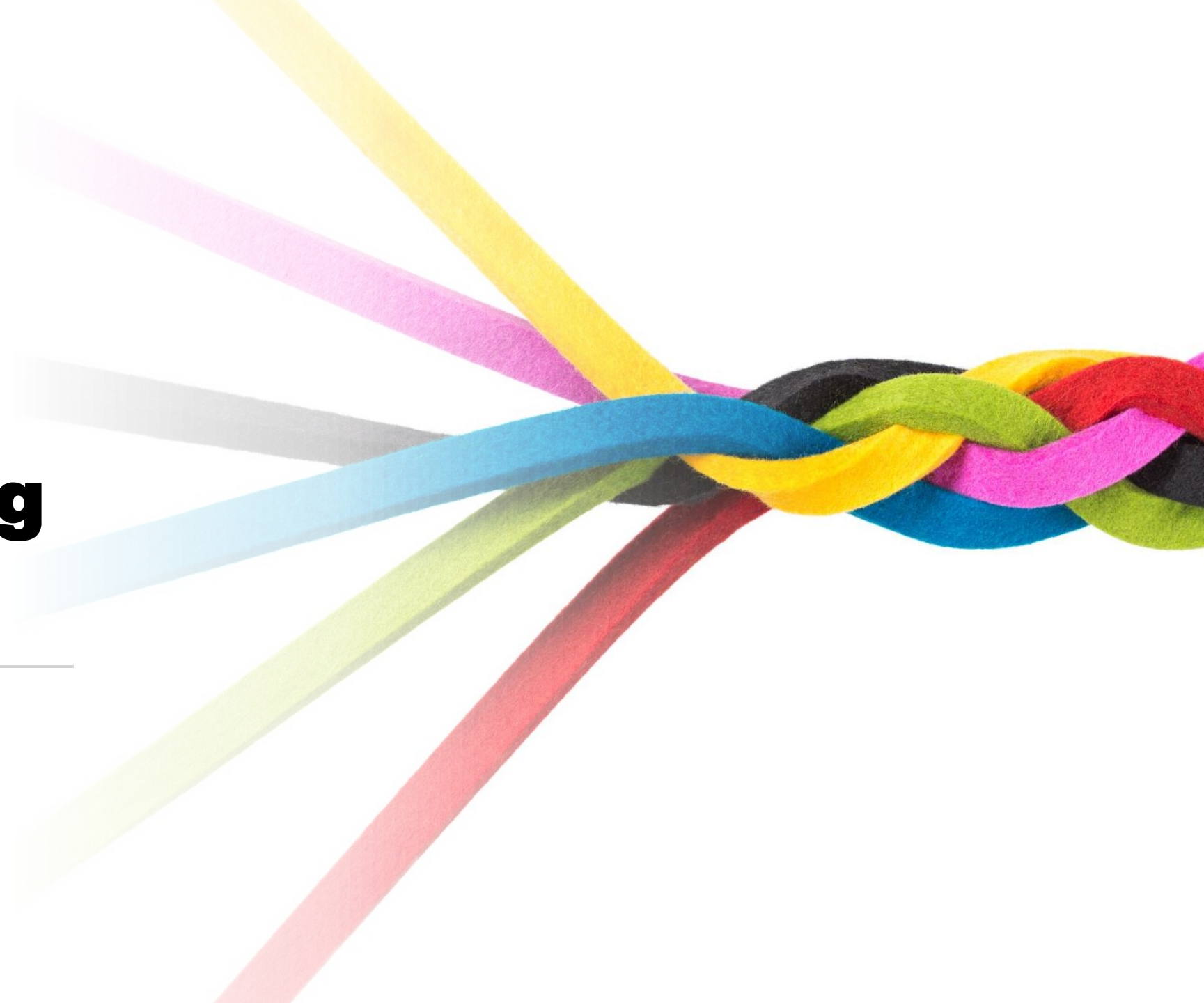
- Master Plans
- Maintenance of City Roads
- Investigate resident safety requests
- Crash reporting up to fatal crashes
- Safe Routes to School walkability studies
- Working with County on shared priorities for State Highway Administration maintained roads.



# Implementing Vision Zero

---


FY24-25 Work Plan



# FY24-25 Work Plan

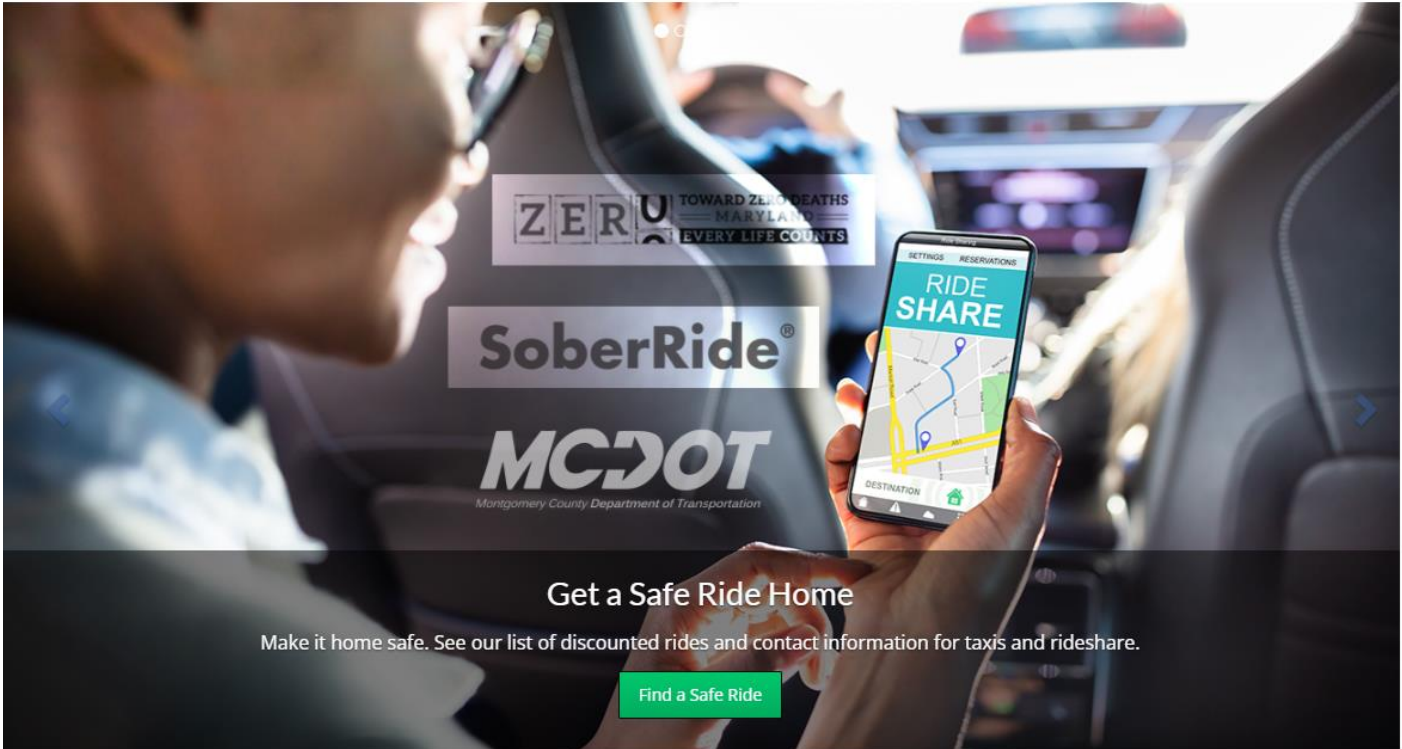
Where can I find the full text of the current two-year work plan?

An official website of [Montgomery County, Maryland](#) MC311

 **Vision Zero**

Translate

[Home](#) [About](#) [Plan and Reports](#) [Get Involved](#) [Updates](#) [Data](#) [Additional Resources](#) [Contact](#)



**Get a Safe Ride Home**  
Make it home safe. See our list of discounted rides and contact information for taxis and rideshare.

[Find a Safe Ride](#)

# ACTION PLAN & WORK PLAN

How the long-term and short-term plans relate

2030 Plan	Vision Zero						
Plan Pillars	Complete Streets		Multimodal Future			Culture of Safety	
Safe System Alignment	Safe Streets	Safe Speeds	Safe Transportation	Safe & Sustainable Communities	Safe Vehicles	Safe People	Safe Post-Crash Emergency Response and Care
Actions	17 Actions	3 Actions	10 Actions	1 Action	2 Actions	10 Actions	2 Actions
FY25 Work Plan	65 Tasks	4 Tasks	17 Tasks	5 Tasks	2 Tasks	18 Tasks	2 Tasks

# Priority Action Items

## Top 10 action items

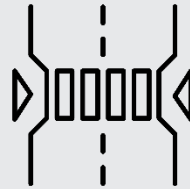
- S-1: High Injury Network Projects
- S-3: Frequent, Protected Crossings
- S-4: Signal Timing and Phasing
- S-7: Separated, Low-Stress Bicycle Facilities
- S-11: Improved Lighting
- S-13: Sidewalk Construction and Upgrades
- M-1: Examine Speed Limit on all Projects
- T-1: Ped and Bike Improvements along New Transportation Projects
- T-2: Transit Stop Safety
- P-4: Ending Impaired Driving Deaths

# FY24 by the Numbers – part 1

Continued advancement of HIN and bikeway projects. With more designs completed in FY24, more reaching construction in FY25.



11% decrease in serious and fatal crashes compared to 2015-2019 5-year annual average



10 high injury network corridors under study, design, or construction



8 pedestrian hybrid beacons and traffic signals installed. 58 since Vision Zero began.



29 bikeway projects underway, 5 under construction



6.7 miles of new sidewalk installed



259 resident engagement events



# FY24 by the Numbers – part 2

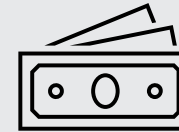
**Bills to expand automated speed enforcement did not pass in 2024 Maryland General Assembly, but after 6 years the Noah’s Law “loophole” was closed.**



1 loophole closed in Noah’s Law to keep more impaired drivers off the road



2 dedicated bus lanes installed on Georgia Avenue and University Boulevard



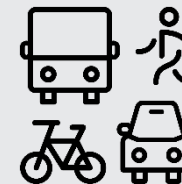
\$9.2 million in federal grant funding secured from Safe Streets and Roads for All



17 walkability audits completed for Safe Routes to School



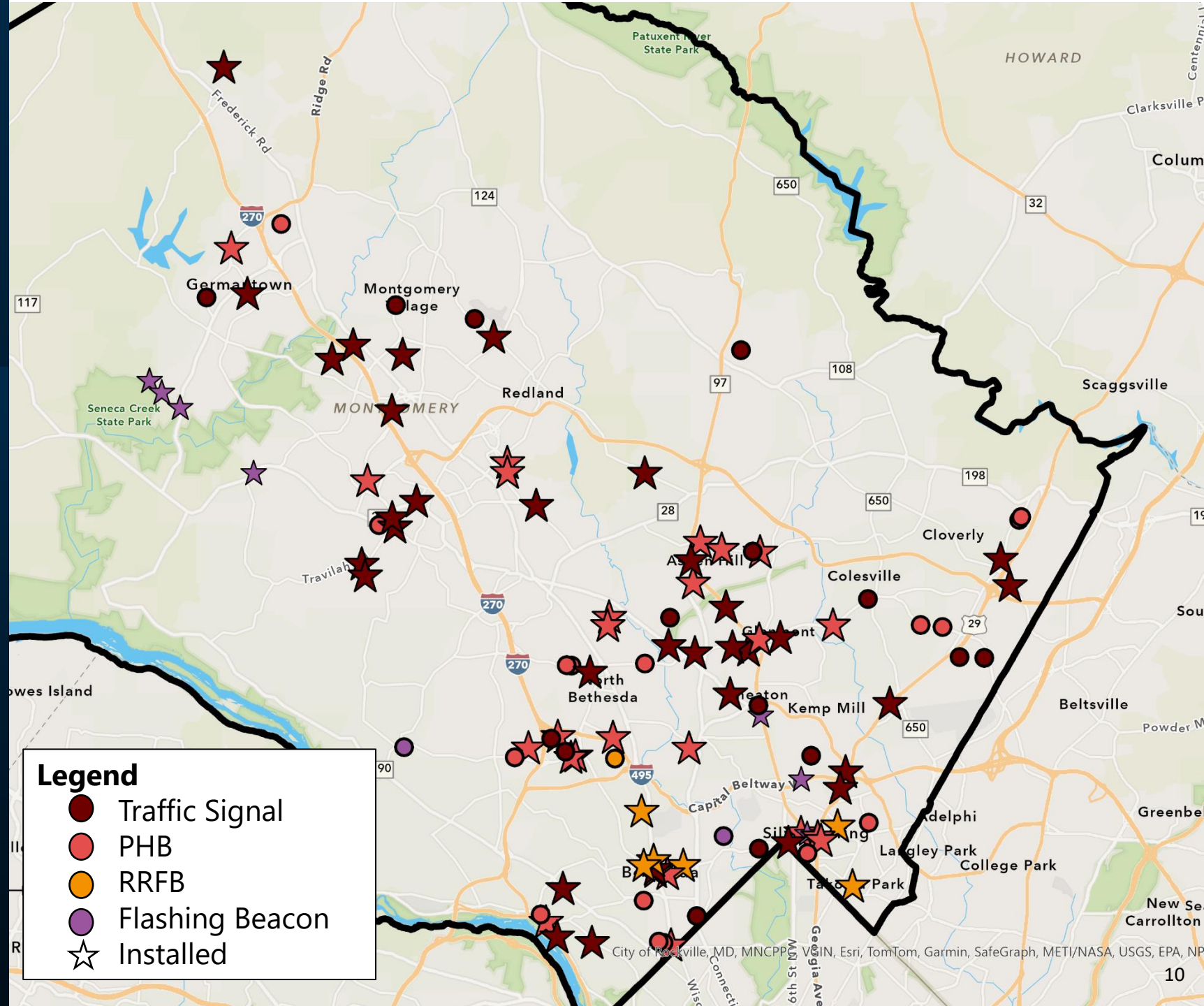
1<sup>st</sup> Safety Day hosted by Vision Zero Youth Ambassadors



5 bikeway projects advancing to connect to Purple Line

Over 50 new installations since Vision Zero started

# NEW SIGNAL AND BEACON INSTALLATIONS



High crash corridors  
along Georgia Ave,  
Rockville Pike, and  
Veirs Mill Road  
lowered by 5-10 MPH

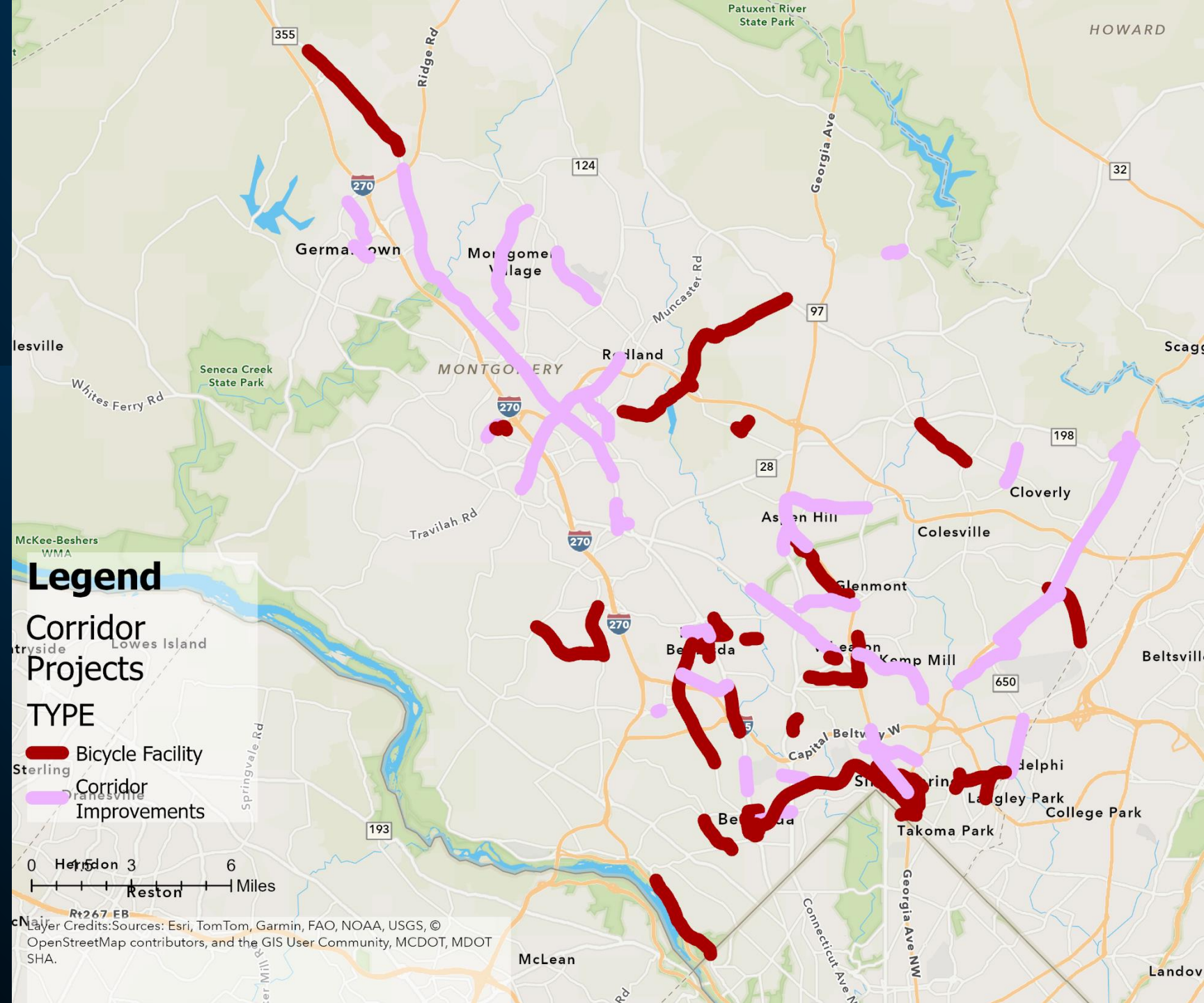
# County and State Roads with Lowered Speed Limits



**Legend**  
— Lowered Speed Limit

While advancing BRT  
also advancing needed  
pedestrian and bicycle  
connectivity

# Bicycle, Bus Rapid Transit, and Corridor Projects



# High Injury Network (HIN)

**Audits of top 10 County routes to be complete in FY25.**

## FY25 Audits:

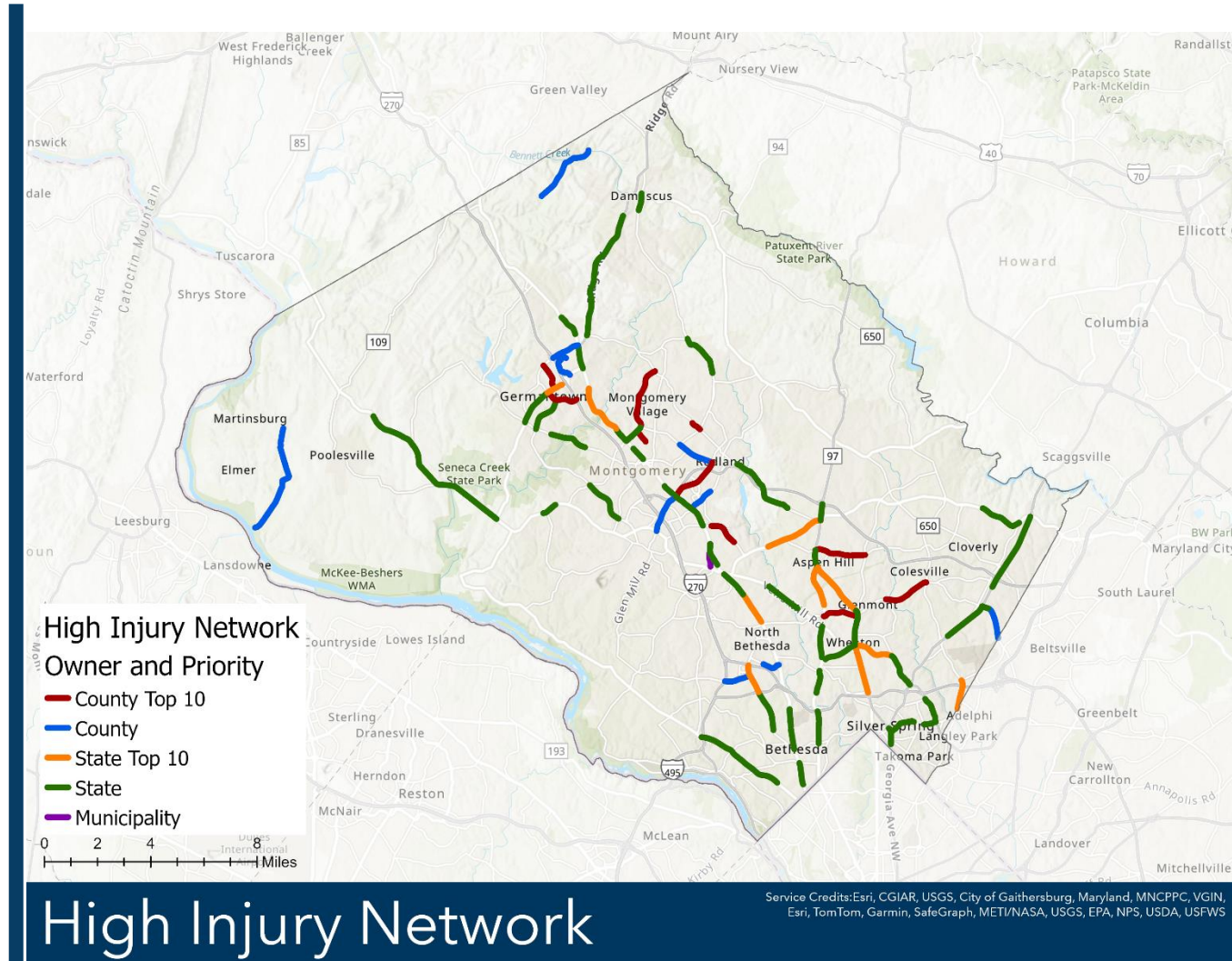
- Democracy Blvd from Old Georgetown Rd to I-270
- Randolph Rd from New Hampshire Ave to Glenmont Cir
- Redland Rd from MD 355 to Baderwood Ln
- E Gude Dr (post construction audit)

## FY25 Design:

- Bel Pre Rd from Layhill Rd to Georgia Ave
- Randolph Rd from Georgia Ave to Connecticut Ave

## FY25 Short- and Mid-Term construction:

- Montgomery Village Ave from Snouffer School Rd to Midcounty Hwy
- Crystal Rock Dr from Father Hurley Blvd to Germantown Rd
- Randolph Rd from Georgia Ave to Connecticut Av



# Purple Line and Bikeway Projects

## Building connections in East County

### Purple Line Construction as of 7/31/24

- Overall 68% complete with service starting winter 2027
- Utility relocations 90% complete

### Bikeways and Shared Use Path Connections

- Capital Crescent Trail 47% complete and opens spring 2026 while Purple Line is undergoing testing.
- Metropolitan Branch Trail Phase 2a under construction.
- Flower Ave Separated Bike Lanes advancing from 35% design.
- Carroll Ave Separated Bike Lanes at 30% design.
- Piney Branch Road Separated Bike Lanes initial concepts under design.



Image by [Purple Line](#).

# Bus Rapid Transit and Bikeway Projects

## Building connections in East County

### Dedicated Bus Lanes

- University Boulevard – March 2024
- Georgia Ave – pilot from June to December 2024
- Shady Grove / Darnestown – September 2024

### Design of Bus Rapid Transit

- Veirs Mill Road BRT and BiPPA – final design expected in early 2025.
- MD 355 – finalize design in 2025.
- US29 Flash Phase 2 – completing 35% design.



# Walkability Studies

## Systematic Review of Walking Area

- 10 – 20 walkability studies completed each fiscal year.
- By the end of FY25, 56% of MCPS schools with walksheds and outside municipalities have a completed or in progress study. 100% of schools in Equity Emphasis Areas (EEAs) will be complete.
- Examine the designated walking area for sidewalks, curb ramps, crashes, conflicts at intersection, etc.
- Studies include intensive review of the existing infrastructure plus on-site review of operations during school arrival and dismissal.
- Coordination with school staff and crossing guards.
- Improvement recommendations developed for short-, medium-, and long-term.





# FY25 Walkability Studies

**By the end of FY25, all schools within an Equity Emphasis Area will have a walkability study completed.**

- Flower Valley
- Beverly Farms Elementary School
- Fox Chapel ES
- Highland Elementary School
- Little Bennett ES
- Snowden Farm ES
- Strawberry Knoll ES
- Westover Elementary School
- Woodlin Es
- Clarksburg High School
- Montgomery Blair High School
- Briggs Chaney Middle school
- Herbert Hoover Middle School
- Rocky Hill Middle School
- Flora M Singer ES



# Sidewalks and Safety Improvements at School Walkshed

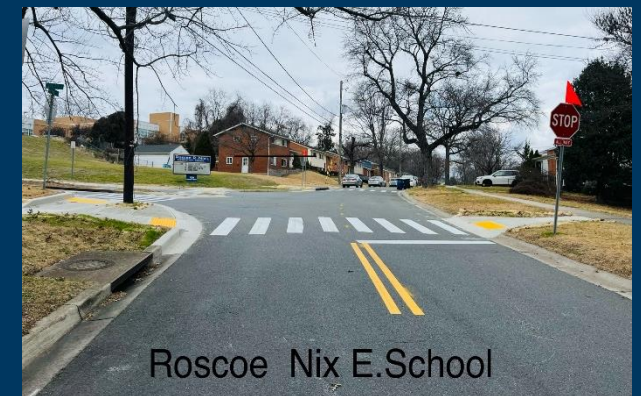
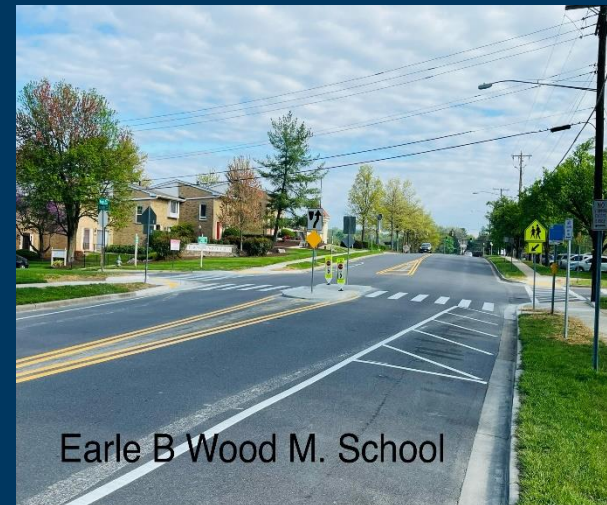
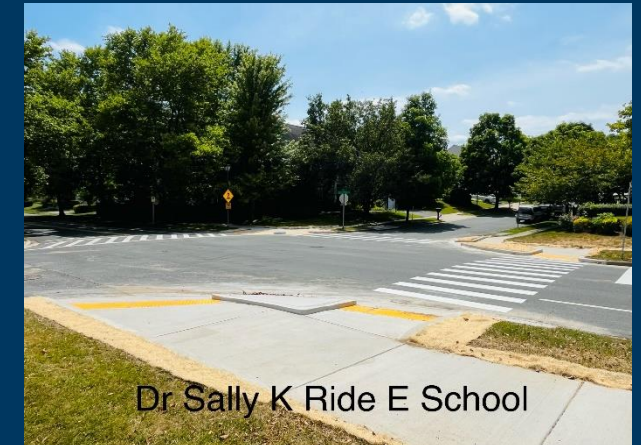
## Recent and Planned Projects

### Recent Projects

- Forest Knolls Elementary – Edgewood, Ladson and Marvin Road
- Roscoe Nix Elementary – Oakview Drive
- Spot gap fills Montgomery Blair along Lexington Drive
- Spot gap fills Hoover Middle along Tuckerman Lane

### FY25 Planned Projects - 9 School Walksheds

- Kensington Parkwood Elementary
- Martin Luther King Jr. Middle
- Lake Seneca Elementary
- Waters Landing Elementary
- Rosemary Hills Elementary
- Rock Creek Forest Elementary (Silver Spring)
- Wheaton Woods Elementary School
- Albert Einstein High School
- Newport Mills Middle School
- Rockview Elementary School



# Automated Enforcement Expansion Plan

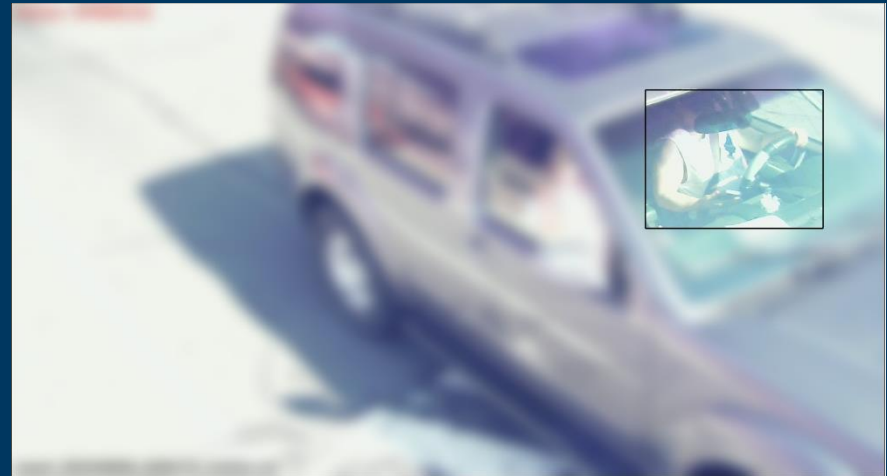
## More sites and new technology

### Recent Expansions

- 5 new red-light and 10 new speed cameras each year.
- 44 new speed locations approved in August.
- Start using red-light cameras as speed cameras where allowed.
- Permitted to use bus lane cameras. Pilot started with WMATA.

### Needing State Law changes

- Using new technology for enforcing seatbelts, mobile phone use, crosswalks, move over law, HOV.
- Allowing speed cameras on High Injury Network.



Examples of mobile phone use captured by distracted driving cameras. At 3 pilot sites, over 780 violations detected in 3 days.



# Education and Outreach Events

Recent Events and Upcoming Schedule





# Vision Zero Youth Ambassadors

# BIKE RODEOS AND LEARN TO RIDE CLASSES



# Holiday Alcohol Task Force

## Promoting Safe Rides Home

- Seven-week task force.
- [Outreach to bars and restaurants](#) with safety messages.
- Promote [Safe Ride Home page](#) to provide one stop shop for finding sober ride options in Montgomery County.





# Crash Data

---

Data and dashboard resources





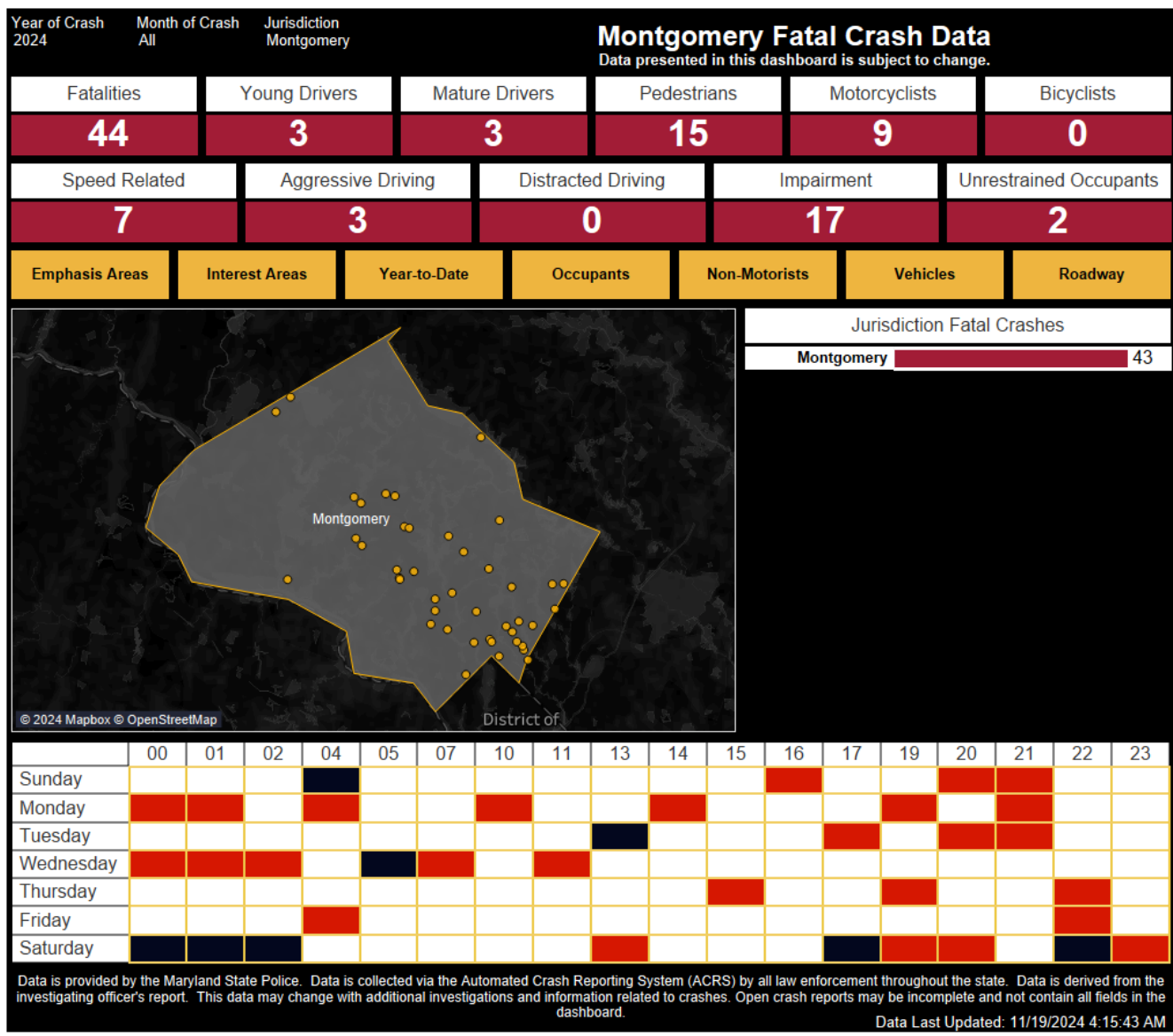
# Finding latest crash and fatality data

## County and State Resources

**Highway Safety Office Fatal Crash Dashboard.** Fatal crashes typically added within 24-48 hours.

**County Monthly Crash Summary.** Updated middle of each month for crashes through the prior month.

**Crash open data.** Raw version of crash data updated weekly.





**THANK YOU!**

Wade Holland, Vision Zero Coordinator

Wade.Holland@MontgomeryCountyMD.gov