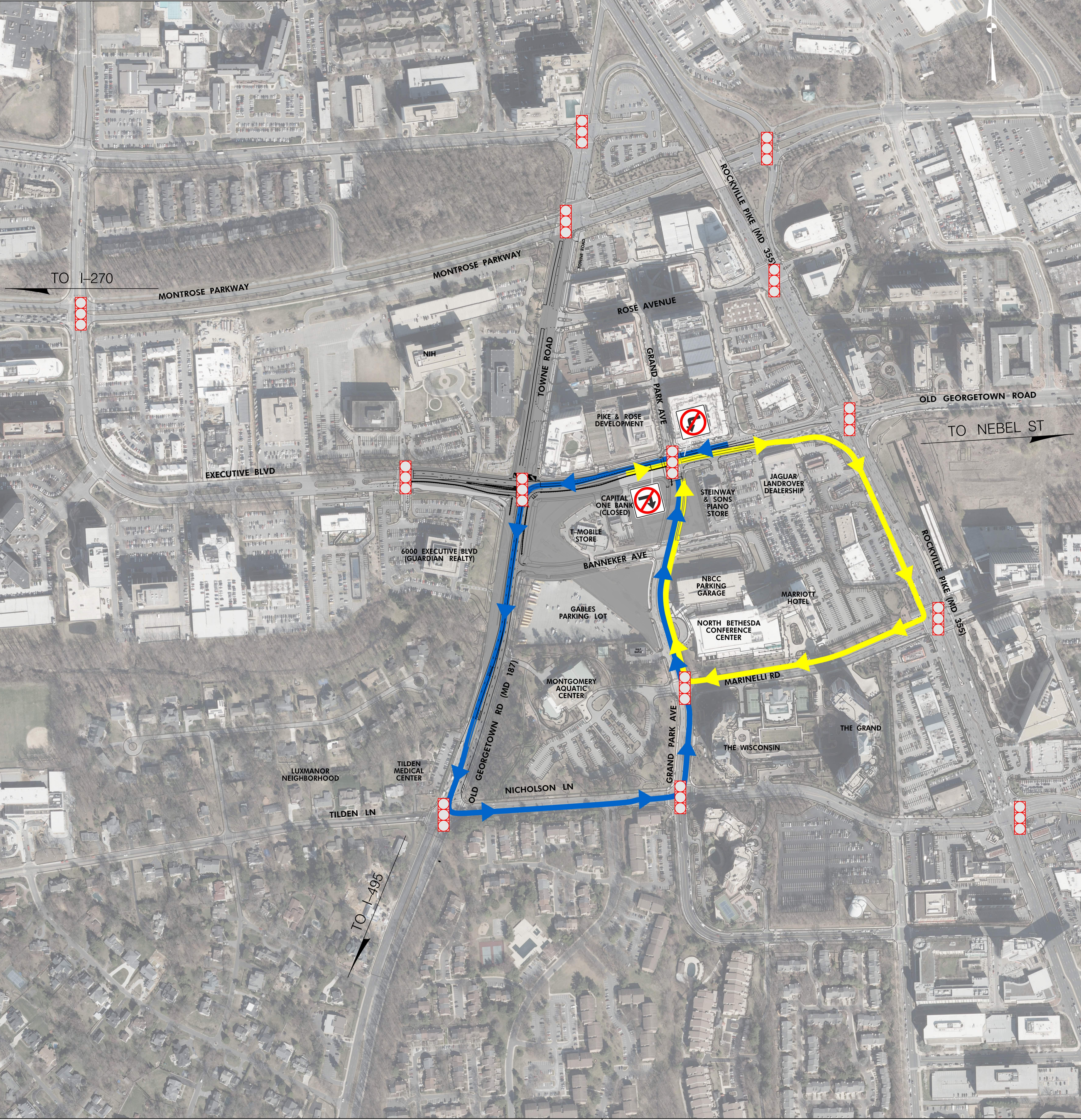


WHITE FLINT WEST
GRAND PARK AVE AT OLD
GEORGETOWN RD RESTRICTED
TURNING MOVEMENT DETOUR PLAN
APRIL 15, 2022 | SCALE: 1" = 200'



LEGEND

- DRUMS
- ▬ BARRICADES
- ▭ WORK ZONE
- ▬ WB OLD GEORGETOWN/MD 187 LEFT TURN DETOUR
- ▬ EB OLD GEORGETOWN/MD 187 RIGHT TURN DETOUR
- ⦿ EXISTING TRAFFIC SIGNAL

NOTES

1. ACCESS TO TOWNE RD WILL BE CLOSED AT THE INTERSECTION OF EXECUTIVE AND OLD GEORGETOWN RD.
2. ACCESS TO MARRIOTT HOTEL, CONFERENCE CENTER, AND MARKED ENTRANCES WILL REMAIN OPEN THROUGHOUT CONSTRUCTION.
3. FIND THE PROJECT WEBSITE HERE:
<https://www.montgomerycountymd.gov/whiteflint/index.html>
4. A PEDESTRIAN AND BICYCLE DETOUR MAP IS ON THE WEBSITE.